

# Other LEDtube

## MAS Ledtube 600mm HO 8.3W 840 T5 DC

Philips LEDtube integrates a LED light source into a traditional fluorescent form factor. This product is the ideal solution for uplamping in general lighting applications: it meets basic lighting requirements, offers significant energy savings, and is environmentally friendly.

### Product data

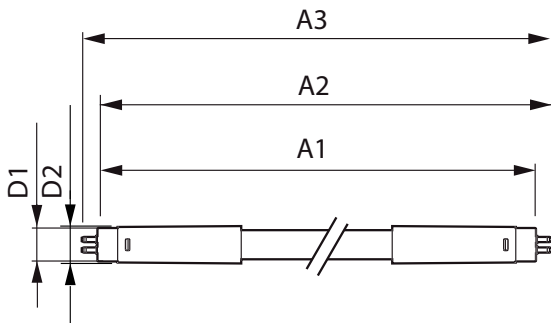
General information		Starting Time (Nom)	
Cap-Base	G5 [ G5]		0.5 s
EU RoHS compliant	Yes	Warm Up Time to 60% Light (Nom)	0.5 s
Nominal Lifetime (Nom)	50000 h	Power Factor (Nom)	-
Switching Cycle	200000	Voltage (Nom)	52-59 V
Light technical		Temperature	
Color Code	840 [ CCT of 4000K]	T-Ambient (Max)	45 °C
Beam Angle (Nom)	160 °	T-Ambient (Min)	-20 °C
Luminous Flux (Nom)	1250 lm	T-Storage (Max)	65 °C
Color Designation	Cool White (CW)	T-Storage (Min)	-40 °C
Correlated Color Temperature (Nom)	4000 K	T-Case Maximum (Nom)	45 °C
Luminous Efficacy (rated) (Nom)	150.00 lm/W	Controls and dimming	
Color Consistency	<6	Dimmable	Yes
Color Rendering Index (Nom)	82	Mechanical and housing	
LLMF At End Of Nominal Lifetime (Nom)	70 %	Bulb Finish	Frosted
Operating and electrical		Bulb Material	Glass
Input Frequency	- Hz	Product Length	600 mm
Power (Nom)	8.3 W	Bulb Shape	Tube, double-ended
Lamp Current (Max)	150 mA	Approval and application	
Lamp Current (Min)	150 mA	Energy Saving Product	Yes
Lamp Current (Nom)	150 mA		

## Other LEDtube

Approval Marks	RoHS compliance CE marking KEMA Keur certificate
Energy Consumption kWh/1000 h	9 kWh
<b>Product data</b>	
Full product code	871869976519400
Order product name	MAS Ledtube 600mm HO 8.3W 840 T5 DC
EAN/UPC - Product	8718699765194

Order code	929002387208
Numerator - Quantity Per Pack	1
Numerator - Packs per outer box	20
Material Nr. (12NC)	929002387208
Net Weight (Piece)	0.094 kg

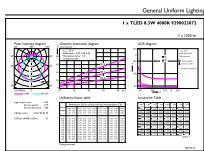
### Dimensional drawing



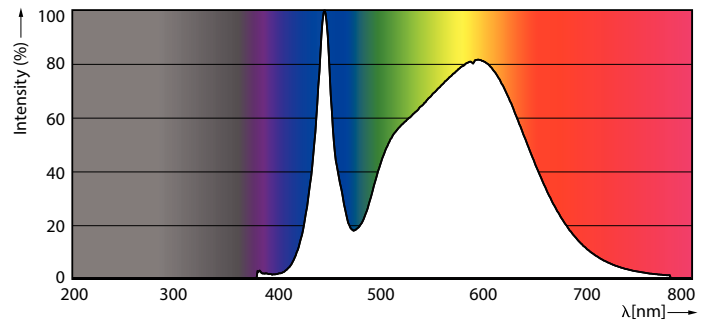
MAS Ledtube 600mm HO 8.3W 840 T5 DC

Product	D1	D2	A1	A2	A3
MAS Ledtube 600mm HO 8.3W 840 T5 DC	15.8 mm	19 mm	549 mm	556.1 mm	563.2 mm

### Photometric data

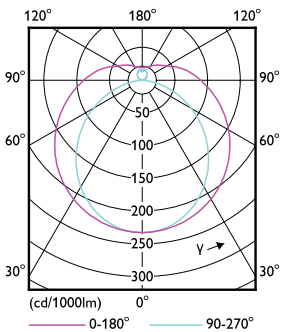


General Uniform Lighting  
1 = FULL 2 = 1/2 3 = 1/3 4 = 1/4 5 = 1/5 6 = 1/6 7 = 1/7 8 = 1/8 9 = 1/9 10 = 1/10  
General Illuminance (lx)    Footcandle (fc)  
Page 10



LEDtube MAS 8,3W G5 1250lm 840

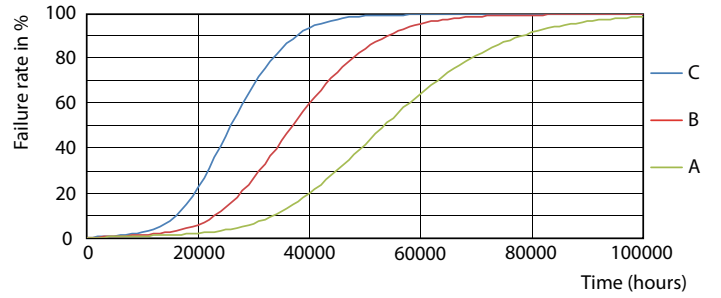
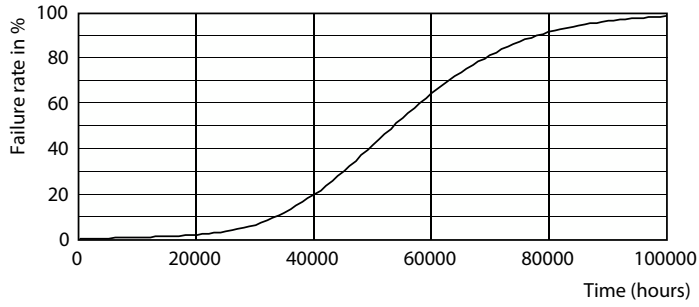
LEDtube MAS 8,3W G5 1250lm 840



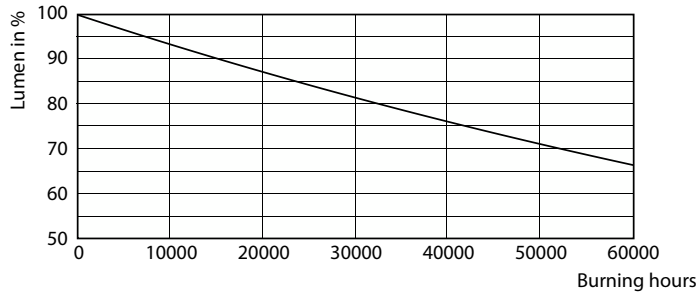
LEDtube MAS 8,3W G5 1250lm

# Other LEDtube

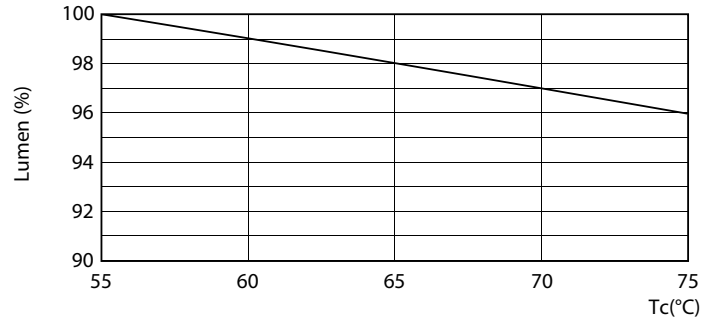
## Lifetime



Life Expectancy Diagram

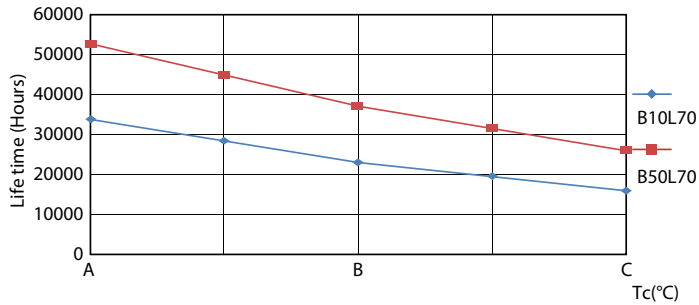


LEDtube 50K FailureRate-LED



Lumen Maintenance Diagram

LEDtube MAS 8,3W 50K LumenVsTc



LEDtube 50K LifetimeVsTc-LED

## Other LEDtube

