



MasterConnect LEDtube EM/mains T8



MC LEDtube IA 1500mm UO 25W865 T8

Introducing MasterConnect LEDtubes - smart retrofit LED T8 lamps that give you an easy and seamless way to upgrade to connected lighting. Simply set up with an intuitive app and MasterConnect LED tube lighting can be programmed to maximize energy savings, while providing wireless and automated light for your comfort and convenience. What's more, it is fully scalable and upgradable. If you want to enjoy additional benefits such as remote control or a management dashboard, you can simply keep the lamps you currently have installed and add a gateway to experience all the advantages of a cloud-based system. There's no better way to take lighting solutions to the next level.

Product data

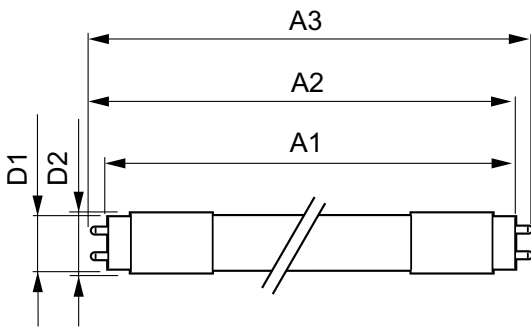
General Information		Color Consistency	
Cap-Base	G13 [Medium Bi-Pin Fluorescent]	Color rendering index (CRI)	83
Nominal lifetime	60,000 hour(s)	LLMF At End Of Nominal Lifetime (Nom)	70 %
Switching Cycle	200,000	Flickering value (PstLM)	1
Lighting Technology	LED	Stroboscopic effect value (SVM)	0.9
Flux measurement reference	Sphere	Photobiological safety according to EN 62471	RGO
CE mark	Yes	Operating and Electrical	
EU RoHS compliant	Yes	Line Frequency	50 to 60 Hz
Light Technical		Input Frequency	50 to 60 Hz
Color Code	865 [CCT of 6500K]	Power Consumption	25 W
Beam Angle (Nom)	160 degree(s)	Starting Time (Nom)	0.5 s
Luminous Flux	3,700 lumen	Warm-up time to 60% light	0.5 s
Color Designation	Cool Daylight	Power Factor (Fraction)	0.9
Correlated Color Temperature (Nom)	6500 K	Voltage (Nom)	220-240 V
Luminous Efficacy (rated) (Nom)	148 lm/W		

MasterConnect LEDtube EM/mains T8

LED alternative to fluorescent lamp power	58 W
Temperature	
Ambient temperature range	-20 °C to 45 °C
T-Case Maximum (Nom)	65 °C
Controls and Dimming	
Dimmable	Wireless Dim
Mechanical and Housing	
Product Length	1,500 mm
Bulb Shape	Tube, double-ended
Approval and Application	
Energy Efficiency Class	D
Energy Saving Product	Yes
Approval Marks	RoHS compliance TUV CE marking KEMA Keur certificate

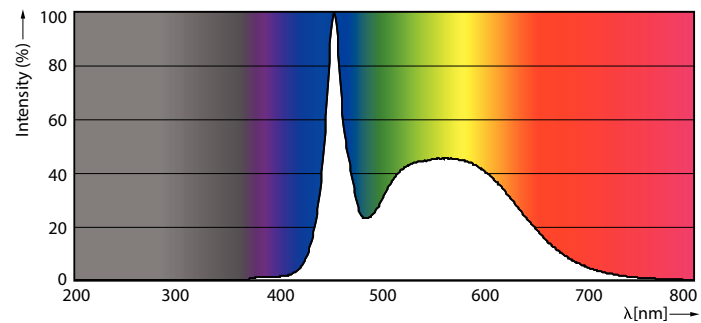
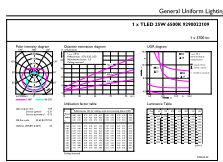
Energy Consumption kWh/1000 h	25 kWh
EPREL Registration Number	406203
Product Data	
Full product code	871869966978200
Order product name	MC LEDtube IA 1500mm UO 25W865 T8
Order code	929002210902
Numerator - Quantity Per Pack	1
Numerator - Packs per outer box	10
Material Nr. (12NC)	929002210902
Full product name	MC LEDtube IA 1500mm UO 25W865 T8
EAN/UPC - Case	8718699669799
EAN/UPC - Product/Case	8718699669782

Dimensional drawing



Product	D1	D2	A1	A2	A3
MC LEDtube IA 1500mm UO 25W865 T8	25.8 mm	28 mm	1,498.7 mm	1,505.8 mm	1,512.9 mm

Photometric data

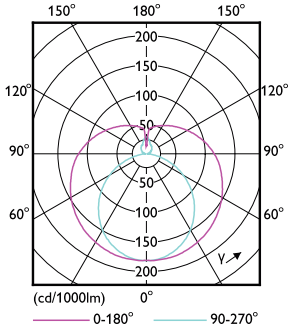


General uniform lighting - MC LEDtube IA 1500mm UO 25W865 T8

Spectral Power Distribution Colour - MC LEDtube IA 1500mm UO 25W865 T8

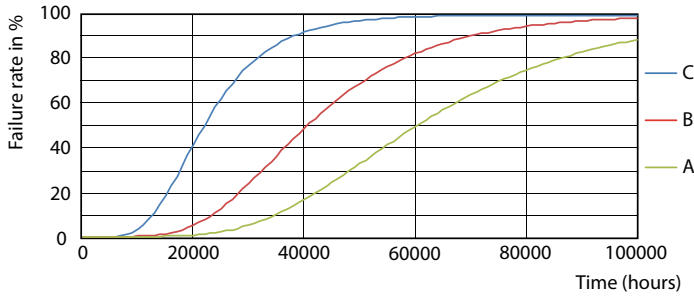
MasterConnect LEDtube EM/mains T8

Photometric data

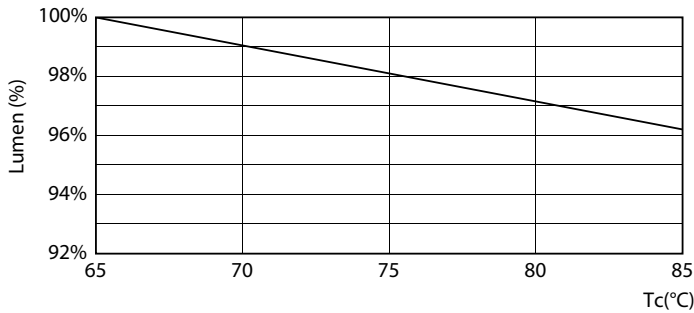


Light Distribution Diagram - MC LEDtube IA 1500mm UO 25W865 T8

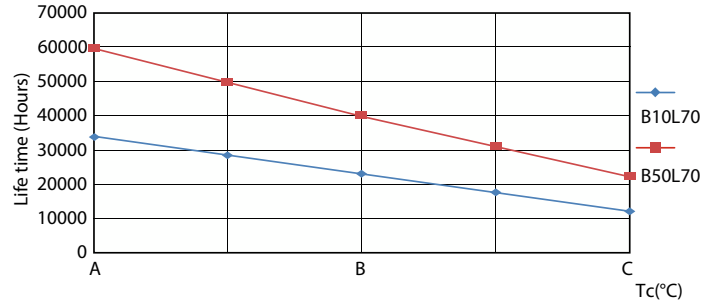
Lifetime



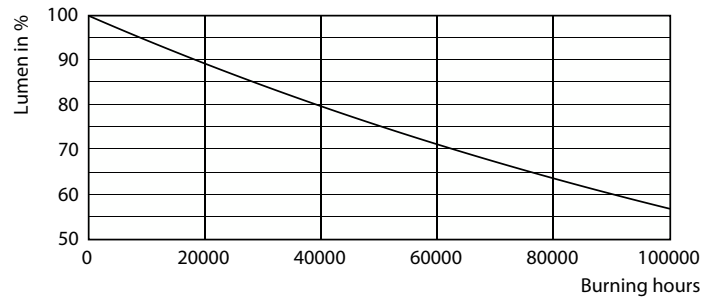
Life Expectancy Diagram - MC LEDtube IA 1500mm UO 25W865 T8



Lumen Maintenance Diagram - MC LEDtube IA 1500mm UO 25W865 T8



Life Expectancy Diagram - MC LEDtube IA 1500mm UO 25W865 T8



Lumen Maintenance Diagram - MC LEDtube IA 1500mm UO 25W865 T8

MasterConnect LEDtube EM/mains T8

Lifetime



Life Expectancy Diagram - MC LEDtube IA 1500mm UO 25W865 T8

