

# MASTER LEDtube EM/ Mains T8

## Master LEDTube 1200mm 15.5W 865 T8 W JP

The Philips MASTER LEDtube integrates a LED light source into a traditional fluorescent form factor. Its unique design creates a perfectly uniform visual appearance, which cannot be distinguished from traditional fluorescent. These T8 LED tubes are the right choice for absolute performance and are designed to stand up to everyday conditions. Unparalleled savings thanks to low energy consumption and an exceptionally long lifetime ensure this tube masters every demanding application.

### Warnings and Safety

- NOTE: The overall energy efficiency and light distribution of any installation that uses these lamps will be determined by the design of the installation.

### Product data

General information	
Cap-Base	G13 [ Medium Bi-Pin Fluorescent]
EU RoHS compliant	Yes
Nominal Lifetime (Nom)	50000 h
Switching Cycle	200000
Technical Type	LEDTECH-LOV
Light technical	
Color Code	865 [ CCT of 6500K]
Beam Angle (Nom)	160 °
Luminous Flux (Nom)	2500 lm
Color Designation	Cool Daylight
Correlated Color Temperature (Nom)	6500 K
Luminous Efficacy (rated) (Nom)	161.00 lm/W

Color Consistency	<6
Color Rendering Index (Nom)	83
LLMF At End Of Nominal Lifetime (Nom)	70 %
Operating and electrical	
Input Frequency	50 to 60 Hz
Power (Nom)	15.5 W
Lamp Current (Max)	163 mA
Lamp Current (Min)	67 mA
Starting Time (Nom)	0.5 s
Warm Up Time to 60% Light (Nom)	0.5 s
Power Factor (Nom)	0.9
Voltage (Nom)	100-242 V

# MASTER LEDtube EM/Mains T8

## Temperature

T-Ambient (Max)	45 °C
T-Ambient (Min)	-20 °C
T-Storage (Max)	65 °C
T-Storage (Min)	-40 °C
T-Case Maximum (Nom)	55 °C

## Controls and dimming

Dimmable	No
----------	----

## Mechanical and housing

Bulb Finish	Frosted
Bulb Material	Plastic
Product Length	1200 mm
Bulb Shape	Tube, double-ended

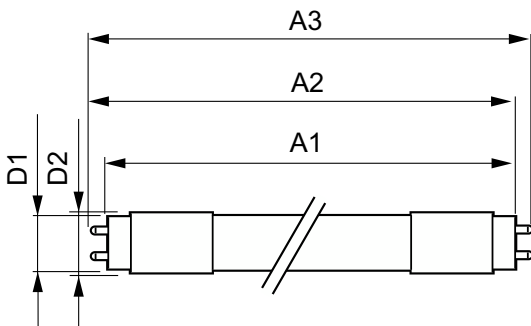
## Approval and application

Energy Saving Product	Yes
Approval Marks	RoHS compliance KEMA Keur certificate

## Product data

Full product code	871951442190500
Order product name	Master LEDTube 1200mm 15.5W 865 T8 W JP
EAN/UPC - Product	8719514421905
Order code	929002022848
Numerator - Quantity Per Pack	1
Numerator - Packs per outer box	20
Material Nr. (12NC)	929002022848
Net Weight (Piece)	0.210 kg

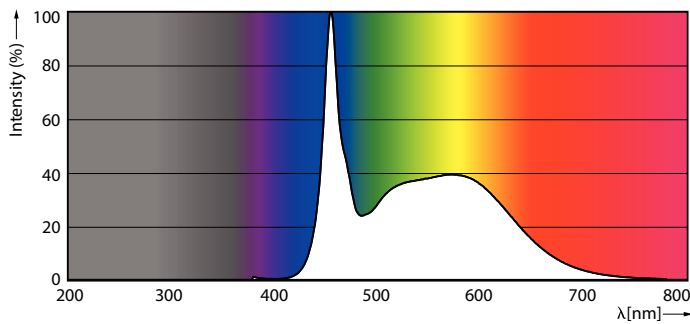
## Dimensional drawing



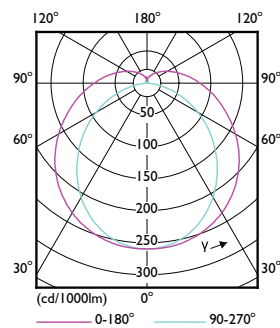
Master LEDTube 1200mm 15.5W 865 T8 W JP

Product	D1	D2	A1	A2	A3
Master LEDTube 1200mm 15.5W 865 T8 W JP	25.8 mm	28 mm	1198.2 mm	1205.3 mm	1212.4 mm

## Photometric data



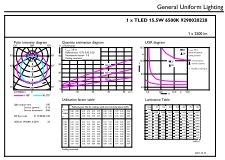
LEDtube MAS GM 15,5W G13 2500lm 865-POC



LEDtube MAS GM 8W G13 1050lm-LDD

# MASTER LEDtube EM/Mains T8

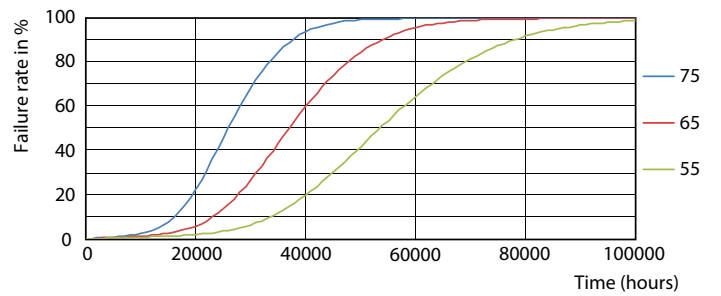
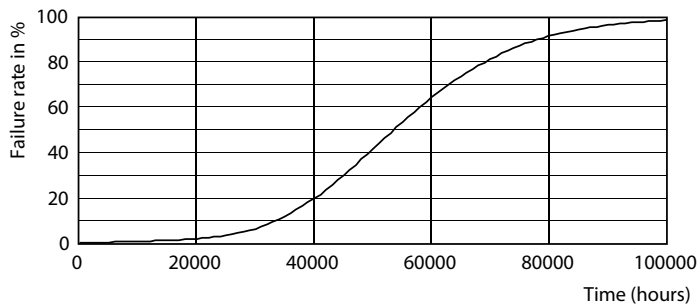
## Photometric data



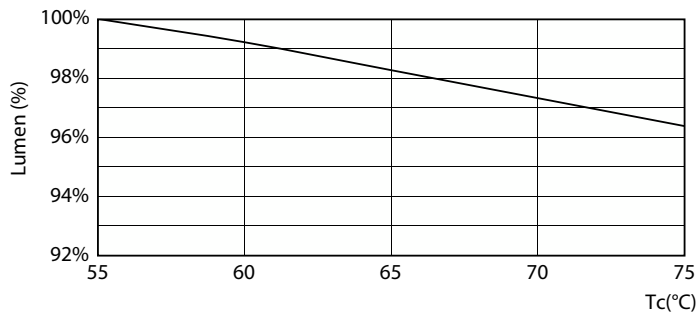
© 2022 Philips Lighting B.V. Page 10

LEDtube MAS GM 15,5W G13 2500lm 865-GUL

## Lifetime

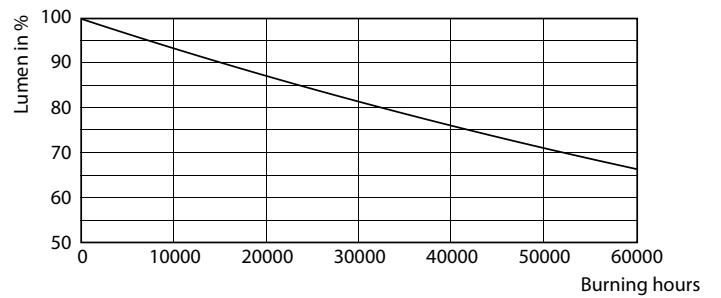


Life Expectancy Diagram



LEDtube MAS GM 12,5W 50K LumenVsTc-LMP

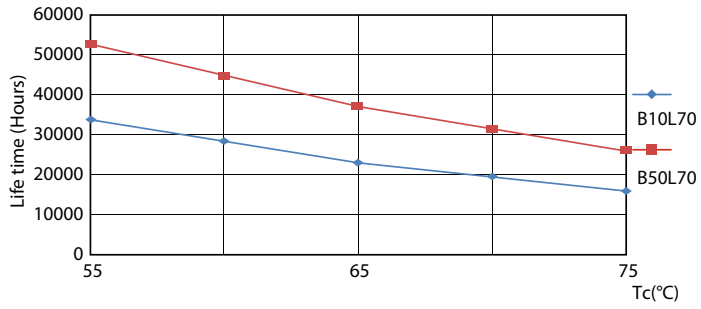
LEDtube 50K 5575 FailureRate-LED



Lumen Maintenance Diagram

# MASTER LEDtube EM/Mains T8

## Lifetime



LEDtube 50K 5575 LifetimeVsTc-LED

