

MASTER LEDtube EM/ Mains T8

Master LEDTube 1200mm 15.5W 850 T8 W JP

The Philips MASTER LEDtube integrates a LED light source into a traditional fluorescent form factor. Its unique design creates a perfectly uniform visual appearance, which cannot be distinguished from traditional fluorescent. These T8 LED tubes are the right choice for absolute performance and are designed to stand up to everyday conditions. Unparalleled savings thanks to low energy consumption and an exceptionally long lifetime ensure this tube masters every demanding application.

Warnings and Safety

- NOTE: The overall energy efficiency and light distribution of any installation that uses these lamps will be determined by the design of the installation.

Product data

| General information | |
|------------------------------------|----------------------------------|
| Cap-Base | G13 [Medium Bi-Pin Fluorescent] |
| EU RoHS compliant | Yes |
| Nominal Lifetime (Nom) | 50000 h |
| Switching Cycle | 200000 |
| Technical Type | LEDTECH-LOV |
| Light technical | |
| Color Code | 850 [CCT of 5000K] |
| Beam Angle (Nom) | 160 ° |
| Luminous Flux (Nom) | 2500 lm |
| Color Designation | Daylight |
| Correlated Color Temperature (Nom) | 5000 K |
| Luminous Efficacy (rated) (Nom) | 161.00 lm/W |

| Color Consistency | <6 |
|---------------------------------------|-------------|
| Color Rendering Index (Nom) | 83 |
| LLMF At End Of Nominal Lifetime (Nom) | 70 % |
| Operating and electrical | |
| Input Frequency | 50 to 60 Hz |
| Power (Nom) | 15.5 W |
| Lamp Current (Max) | 163 mA |
| Lamp Current (Min) | 67 mA |
| Starting Time (Nom) | 0.5 s |
| Warm Up Time to 60% Light (Nom) | 0.5 s |
| Power Factor (Nom) | 0.9 |
| Voltage (Nom) | 100-242 V |

MASTER LEDtube EM/Mains T8

Temperature

| | |
|----------------------|--------|
| T-Ambient (Max) | 45 °C |
| T-Ambient (Min) | -20 °C |
| T-Storage (Max) | 65 °C |
| T-Storage (Min) | -40 °C |
| T-Case Maximum (Nom) | 55 °C |

Controls and dimming

| | |
|----------|----|
| Dimmable | No |
|----------|----|

Mechanical and housing

| | |
|----------------|--------------------|
| Bulb Finish | Frosted |
| Bulb Material | Plastic |
| Product Length | 1200 mm |
| Bulb Shape | Tube, double-ended |

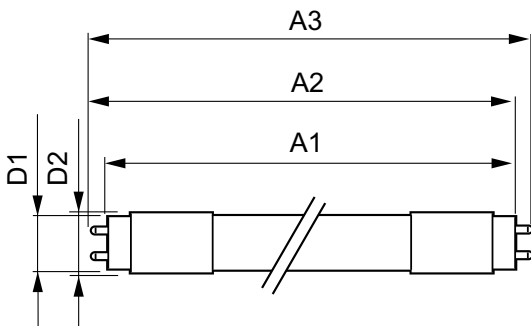
Approval and application

| | |
|-----------------------|---------------------------------------|
| Energy Saving Product | Yes |
| Approval Marks | RoHS compliance KEMA Keur certificate |

Product data

| | |
|---------------------------------|---|
| Full product code | 871951442188200 |
| Order product name | Master LEDTube 1200mm 15.5W 850 T8 W JP |
| EAN/UPC - Product | 8719514421882 |
| Order code | 929002022748 |
| Numerator - Quantity Per Pack | 1 |
| Numerator - Packs per outer box | 20 |
| Material Nr. (12NC) | 929002022748 |
| Net Weight (Piece) | 0.210 kg |

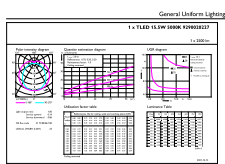
Dimensional drawing



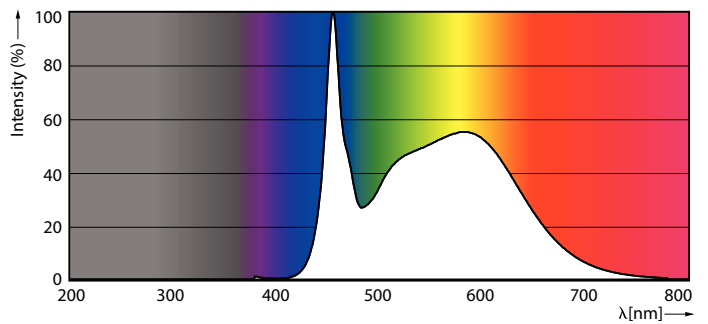
Master LEDTube 1200mm 15.5W 850 T8 W JP

| Product | D1 | D2 | A1 | A2 | A3 |
|--|---------|-------|-----------|-----------|-----------|
| Master LEDTube 1200mm 15.5W 850 T8 W JP | 25.8 mm | 28 mm | 1198.2 mm | 1205.3 mm | 1212.4 mm |

Photometric data



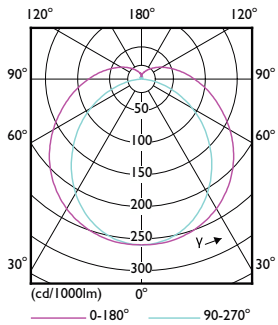
LEDtube MAS GM 15,5W G13 2500lm 850-GUL



LEDtube MAS GM 15,5W G13 2500lm 850-POC

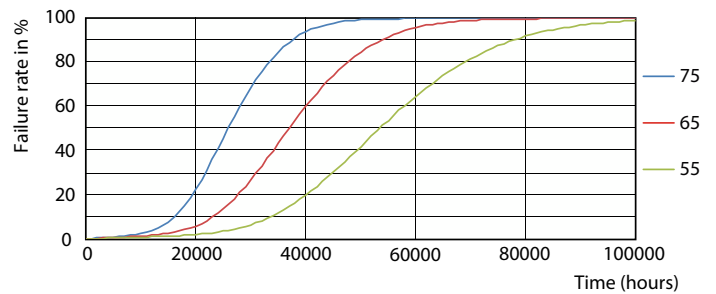
MASTER LEDtube EM/Mains T8

Photometric data

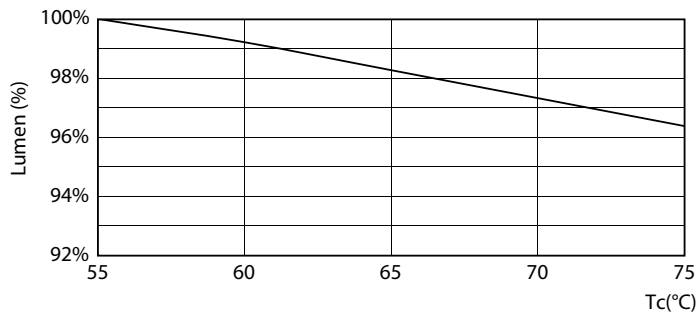


LEDtube MAS GM 8W G13 1050lm-LDD

Lifetime

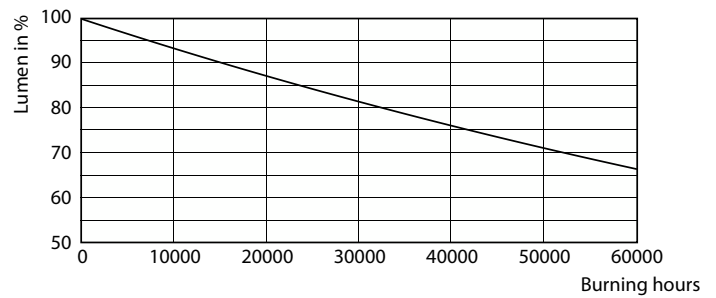


Life Expectancy Diagram



LEDtube MAS GM 12,5W 50K LumenVsTc-LMP

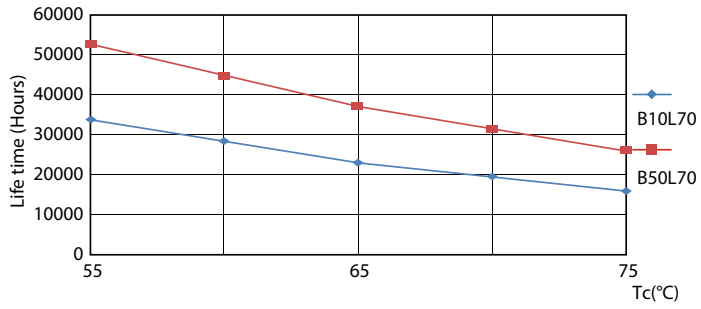
FailureRate



Lumen Maintenance Diagram

MASTER LEDtube EM/Mains T8

Lifetime



LifetimeVsTc

