



MASTER LEDtube InstantFit HF T8



MASTER LEDtube HF 600mm HO 8W830 T8

Philips MASTER LEDtube InstantFit T8 integrates a LED light source into a traditional fluorescent form factor. Its unique design creates a perfectly uniform visual appearance which cannot be distinguished from traditional fluorescent. Philips MASTER LEDtube InstantFit T8 is the ideal solution for customers who have higher light requirements and want to maximize value over lifetime. Full energy savings & longer lifetime result in attractive payback times and TCO benefits.

Warnings and Safety

- NOTES: The overall energy efficiency and light distribution of any installation that uses these lamps are determined by the design of the installation.

Product data

General information		Luminous Efficacy (rated) (Nom)	
Cap-Base	G13 ROT (Rotating) [Medium Bi-Pin Fluorescent]	Luminous Efficacy (rated) (Nom)	125 lm/W
EU RoHS compliant	Yes	Color Consistency	<6
Nominal Lifetime (Nom)	75000 h	Color Rendering Index (Nom)	80
Switching Cycle	50000X	LLMF At End Of Nominal Lifetime (Nom)	70 %
Flux measurement reference	Sphere	Operating and electrical	
Tier	MASTER	Input Frequency	20000-120000 Hz
Light technical		Power (Nom)	8 W
Color Code	830 [CCT of 3000K]	Lamp Current (Max)	500 mA
Beam Angle (Nom)	160 °	Lamp Current (Min)	150 mA
Luminous Flux (Nom)	1000 lm	Starting Time (Nom)	0.5 s
Color Designation	White (WH)	Warm Up Time to 60% Light (Nom)	0.5 s
Correlated Color Temperature (Nom)	3000 K	Power Factor (Nom)	0.9
		Voltage (Nom)	20-50 V

MASTER LEDtube InstantFit HF T8

Temperature

T-Ambient (Max)	45 °C
T-Ambient (Min)	-20 °C
T-Storage (Max)	65 °C
T-Storage (Min)	-40 °C
T-Case Maximum (Nom)	55 °C

Controls and dimming

Dimmable	No
----------	----

Mechanical and housing

Bulb Finish	Frosted
Bulb Material	Plastic
Product Length	600 mm
Bulb Shape	Tube, double-ended

Approval and application

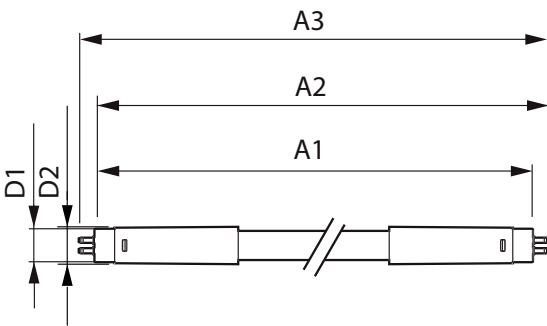
Energy Efficiency Class	E
-------------------------	---

Energy Saving Product	Yes
Approval Marks	RoHS compliance TUV CE marking KEMA Keur certificate
Energy Consumption kWh/1000 h	8 kWh
EPREL Registration Number	1251109

Product data

Full product code	871951446640100
Order product name	MASTER LEDtube HF 600mm HO 8W830 T8
EAN/UPC - Product	8719514466401
Order code	929001393132
Numerator - Quantity Per Pack	1
Numerator - Packs per outer box	20
Material Nr. (12NC)	929001393132
Net Weight (Piece)	0.130 kg

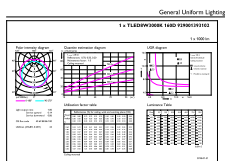
Dimensional drawing



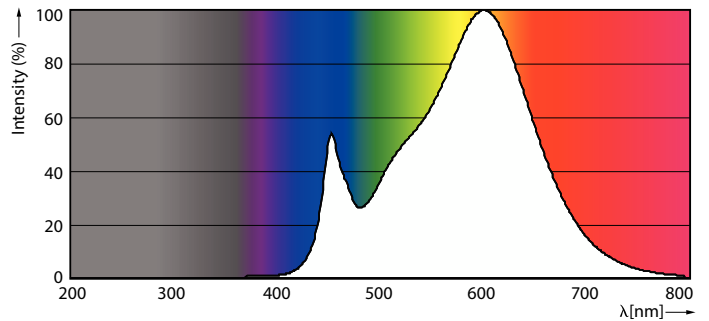
MASTER LEDtube HF 600mm HO 8W830 T8

Product	D1	D2	A1	A2	A3
MASTER LEDtube HF 600mm HO 8W830 T8	25.8 mm	28 mm	588.6 mm	595.7 mm	602.8 mm

Photometric data



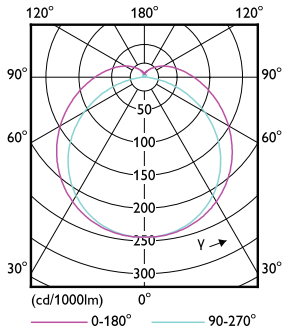
General uniform lighting



Spectral Power Distribution Colour

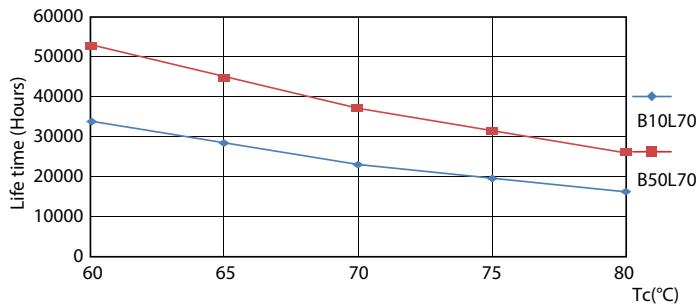
MASTER LEDtube InstantFit HF T8

Photometric data

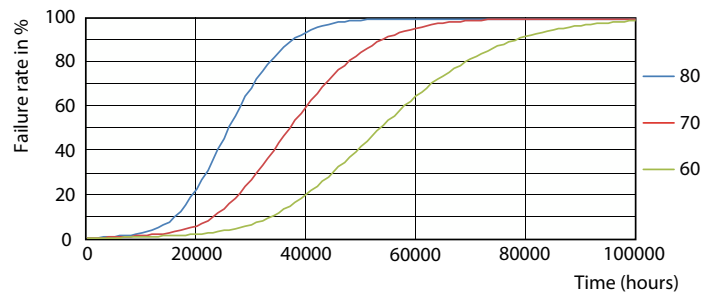


Light Distribution Diagram

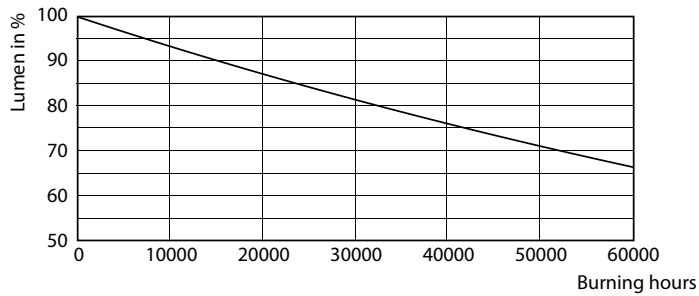
Lifetime



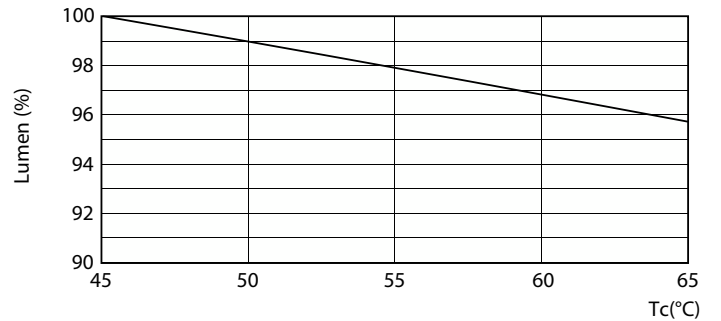
LifetimeVsTc



FailureRate



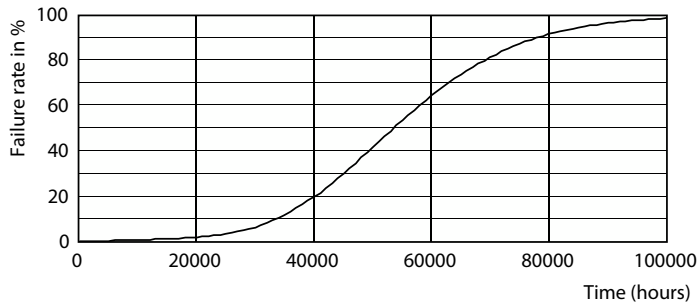
Lumen Maintenance Diagram



LumenVsTc

MASTER LEDtube InstantFit HF T8

Lifetime



Life Expectancy Diagram

