

UniStrip G4

BCP384 24LED RGBNW 220V A2 L50 DMX D2

UniStrip G4 - 1574 lm - 40 W - - K

UniStrip G4 is a surface mounted, exterior-rated LED luminaire that is designed for façade and outdoor architectural lighting applications.;One family that fits all your needs, wall washing, grazing and also linear flood lighting.;The robust mechanical and unique optical designs make it ideal for illuminating buildings facades, bridges, overpasses and any application that requires a linear lighting solution.;Available in white, monochromatic colors, RGB, RGBW and tunable white and DMX control option available with up to 8 pixels (8IDs) to give architects and designers the freedom to explore a wide range of concepts and design with no limitations.

Warnings and Safety

- For outdoor use only

Product data

General information		Input Frequency	
Light source color	Red, green, blue and white	Input Frequency	50 to 60 Hz
Driver included	Yes	Inrush current	60 A
Optical cover/lens type	Tempered glass	Power Factor (Min)	0.9
Control interface	Dynamic DMX	Controls and dimming	
Connection	Flying leads/wires and 2 Push-in connector 4-pole	Dimmable	Yes
Cable	Cable 0.3 m without plug 3-pole + 2 Cables 0.3 m with connector 4-pole	Mechanical and housing	
Protection class IEC	Safety class I	Housing Material	Aluminum extruded
Flammability mark	For mounting on normally flammable surfaces	Optical cover/lens material	Polymethyl methacrylate
CE mark	CE mark	Effective projected area	0.085 m ²
Operating and electrical		Color	Dark gray
Input Voltage	220 to 240 V		

UniStrip G4

Approval and application

Ingress protection code	IP66 [Dust penetration-protected, jet-proof]
Mech. impact protection code	IK06 [1 J]

Initial performance (IEC compliant)

Initial luminous flux (system flux)	1574 lm
Luminous flux tolerance	+/-10%
Initial LED luminaire efficacy	39 lm/W
Init. Corr. Color Temperature	- K
Init. Color Rendering Index	-
Initial input power	40 W
Power consumption tolerance	+/-10%

Application conditions

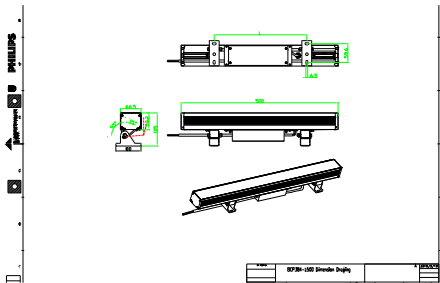
Ambient temperature range	-40 to +50 °C
---------------------------	---------------

Product data

Full product code	871951492204499
Order product name	BCP384 24LED RGBNW 220V A2 L50 DMX D2
EAN/UPC - Product	8719514922044
Order code	911401736553
Numerator - Quantity Per Pack	1
Numerator - Packs per outer box	4
Material Nr. (12NC)	911401736553
Net Weight (Piece)	2.399 kg



Dimensional drawing



BCP384 24LED RGBNW 220V A2 L50 DMX D2

