



# GreenPerform Waterproof G3

WT198X LED40S/865 L1 W L1200

GreenPerform Waterproof G3, 28.9 W, 4000 lm, 6500 K,  
Wireless

GreenPerform Waterproof G3 is a superb choice for hard-working applications. Not only does it provide excellent optical performance, it also delivers substantial energy saving. And because it works seamlessly with IoT software like Interact, it also offers the option of customization, convenience, and data-driven insights.

## Product data

General Information		Light source color	
Number of gear units	1 unit	Light source color	865 cool daylight
Gear	EB [Electronic]	Optic type	-
Driver included	Yes	Optical cover type	Polycarbonate bowl/cover
Light source engine type	LED	Operating and Electrical	
CE mark	CE mark	Input Voltage	220 to 240 V
Flammability mark	-	Line Frequency	50 to 60 Hz
ENEC mark	-	Inrush current	8 A
Glow-wire test	Temperature 650 °C, duration 30 s	Inrush time	186 ms
EU RoHS compliant	No	Power Consumption	28.9 W
Light Technical		Power Factor (Fraction)	0.95
Luminous Flux	4,000 lm	Connection	Push-in connector 3-pole
Correlated Color Temperature (Nom)	6500 K	Cable	-
Luminous Efficacy (rated) (Nom)	138.4 lm/W	Number of products on MCB of 16 A type B	84
Color rendering index (CRI)	80		
Number of light sources	1		

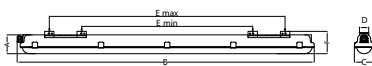
# GreenPerform Waterproof G3

Temperature	
Ambient temperature range	-20 to +45 °C
Controls and Dimming	
Dimmable	Wireless Dim
Control interface	Wireless
Mechanical and Housing	
Housing Material	Plastic
Reflector material	Steel
Optic material	Polycarbonate
Optical cover material	Polycarbonate
Housing Color	Gray
Mounting device	Mounting bracket
Optical cover finish	Clear
Overall length	1,215 mm
Overall width	80 mm
Overall height	76 mm
Dimensions (Height x Width x Depth)	76 x 80 x 1215 mm
Approval and Application	
Ingress protection code	IP65 [Dust penetration-protected, jet-proof]
Mech. impact protection code	IK08 [5 J vandal-protected]
Protection class IEC	Safety class I
Photobiological risk	Photobiological risk group 1 @200mm to EN62778

Initial Performance (IEC Compliant)	
Luminous flux tolerance	-10% / +10%
Initial chromaticity	(0.32, 0.33) SDCM≤3
Power consumption tolerance	+/-10%
Application Conditions	
Performance ambient temperature Tq	35 °C
Maximum dim level	20%
Suitable for random switching	Yes

Product Data	
Order product name	WT198X LED40S/865 L1 W L1200
Full product name	WT198X LED40S/865 L1 W L1200
Full product code	872016953258899
Order code	911401552202
Material Nr. (12NC)	911401552202
Numerator - Quantity Per Pack	1
EAN/UPC - Product/Case	8720169532588
Numerator - Packs per outer box	9
EAN/UPC - Case	8720169544079

## Dimensional drawing



Type	Dimension (mm)						Nr. Of Clips
	A	B	C	D	E min	E max	
L600		665			388	512	6
L1200	76	1215	80	38	538	1062	10
L1500		1515			838	1362	12

## GreenPerform Waterproof G3

