



GreenPerform Waterproof G3

WT198X LED40S/840 L1 W L1200

GreenPerform Waterproof G3, 28.9 W, 4000 lm, 4000 K,
Wireless

GreenPerform Waterproof G3 is a superb choice for hard-working applications. Not only does it provide excellent optical performance, it also delivers substantial energy saving. And because it works seamlessly with IoT software like Interact, it also offers the option of customization, convenience, and data-driven insights.

Product data

| General Information | | Light source color | |
|------------------------------------|-----------------------------------|--|--------------------------|
| Number of gear units | 1 unit | Light source color | 840 neutral white |
| Gear | EB [Electronic] | Optic type | - |
| Driver included | Yes | Optical cover type | Polycarbonate bowl/cover |
| Light source engine type | LED | Operating and Electrical | |
| CE mark | CE mark | Input Voltage | 220 to 240 V |
| Flammability mark | - | Line Frequency | 50 to 60 Hz |
| ENEC mark | - | Inrush current | 8 A |
| Glow-wire test | Temperature 650 °C, duration 30 s | Inrush time | 186 ms |
| EU RoHS compliant | No | Power Consumption | 28.9 W |
| | | Power Factor (Fraction) | 0.9 |
| | | Connection | Push-in connector 3-pole |
| | | Cable | - |
| | | Number of products on MCB of 16 A type B | 84 |
| Light Technical | | | |
| Luminous Flux | 4,000 lm | | |
| Correlated Color Temperature (Nom) | 4000 K | | |
| Luminous Efficacy (rated) (Nom) | 138.4 lm/W | | |
| Color rendering index (CRI) | 80 | | |
| Number of light sources | 1 | | |

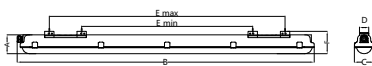
GreenPerform Waterproof G3

| Temperature | |
|-------------------------------------|--|
| Ambient temperature range | -20 to +45 °C |
| Controls and Dimming | |
| Dimmable | Step Dim |
| Control interface | Wireless |
| Mechanical and Housing | |
| Housing Material | Plastic |
| Reflector material | Steel |
| Optic material | Polycarbonate |
| Optical cover material | Polycarbonate |
| Housing Color | Gray |
| Mounting device | Mounting bracket |
| Optical cover finish | Clear |
| Overall length | 1,215 mm |
| Overall width | 80 mm |
| Overall height | 76 mm |
| Dimensions (Height x Width x Depth) | 76 x 80 x 1215 mm |
| Approval and Application | |
| Ingress protection code | IP65 [Dust penetration-protected, jet-proof] |
| Mech. impact protection code | IK08 [5 J vandal-protected] |
| Protection class IEC | Safety class I |
| Photobiological risk | Photobiological risk group 1 @200mm to EN62778 |

| Initial Performance (IEC Compliant) | |
|-------------------------------------|---------------------|
| Luminous flux tolerance | -10% / +10% |
| Initial chromaticity | (0.38, 0.38) SDCM≤3 |
| Power consumption tolerance | +/-10% |
| Application Conditions | |
| Performance ambient temperature Tq | 35 °C |
| Maximum dim level | 20% |
| Suitable for random switching | Yes |

| Product Data | |
|---------------------------------|------------------------------|
| Order product name | WT198X LED40S/840 L1 W L1200 |
| Full product name | WT198X LED40S/840 L1 W L1200 |
| Full product code | 692234198248499 |
| Order code | 911401551702 |
| Material Nr. (12NC) | 911401551702 |
| Numerator - Quantity Per Pack | 1 |
| EAN/UPC - Product/Case | 6922341982484 |
| Numerator - Packs per outer box | 9 |
| EAN/UPC - Case | 6922341982507 |

Dimensional drawing



| Type | Dimension (mm) | | | | | | Nr. Of Clips |
|-------|----------------|------|----|----|-------|-------|--------------|
| | A | B | C | D | E min | E max | |
| L600 | | 665 | | | 388 | 512 | 6 |
| L1200 | 76 | 1215 | 80 | 38 | 538 | 1062 | 10 |
| L1500 | | 1515 | | | 838 | 1362 | 12 |

GreenPerform Waterproof G3

