



Philips CoreLine Downlight: easy installation, excellent illumination

CoreLine Downlight gen5

Philips CoreLine Downlight delivers on the CoreLine promise of innovative, easy to use and high-quality recessed downlights. The CoreLine Downlight range is suitable for one-to-one conventional luminaire replacements, with an attractive TCO that helps your customers make the switch to LED. These recessed indoor downlights offer uniform light distribution for use in general lighting and office applications (UGR 19). They also deliver instant energy savings and have a much longer lifetime, creating a solution that's environmentally friendly and real value-for-money. CoreLine DN142B recessed downlights are easy to install thanks to their standard cut-out size and push-in connectors. An Interact ready option with integrated wireless communications is also available in this family, which can be used with Interact gateways, sensors and software.

Benefits

- Energy saving and longer lifetime to reduce overall operating costs
- One-to-one replacement makes it easy to switch to LED
- Low glare suitable for office applications

CoreLine Downlight gen5

Features

- Available in two cut-out sizes (150mm and 200mm)
- White reflector downlight UGR 25
- Aluminum reflector downlight UGR 19
- Energy efficient: up to 120 lm/W
- Choice of color temperatures: 3000K and 4000K
- Choice of drivers; DALI and wireless with Interact ready
- Optional emergency lighting versions available
- Optional IP54 versions available

Application

- Offices
- Indoor general areas
- Reception and lounge
- Meeting rooms
- Corridors

Warnings and Safety

- Do not apply excessive force to the cable & DC connector, make sure the connector clip is locked before the power is on.

Specifications

Ceiling type	Plaster (board) ceiling	Color Rendering index - >80
Dimming	PSU: non-DimmablePSD: Dimmable (DALI-broadcasting)WIA: Wireless control, compatible with Interact	CRI
Control gear failure rate at median useful life	5%	Driver replaceable Yes
50.000h		

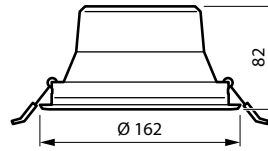
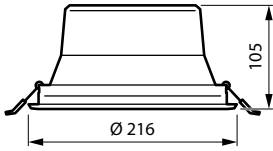
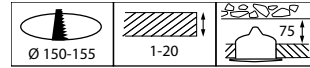
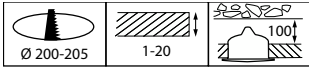
Versions



CoreLine Downlight DN142B
Compact with UGR19

CoreLine Downlight gen5

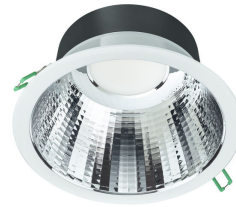
Dimensional drawing



Product details



CoreLine Downlight DN142B
Compact with White Reflector
(WR)



CoreLine Downlight DN142B
Compact with UGR19

CoreLine Downlight gen5

General Information

CE mark	CE mark
Driver included	Yes
ENEC mark	-
Flammability mark	For mounting on normally flammable surfaces
Glow-wire test	Temperature 650 °C, duration 30 s
Number of gear units	1 unit

Light Technical

Beam angle of light source	- degree(s)
Color rendering index (CRI)	≥80
Stroboscopic effect visibility measure (SVM)	1

Operating and Electrical

Line Frequency	50 to 60 Hz
----------------	-------------

Temperature

Ambient temperature range	-20 to +40 °C
---------------------------	---------------

Approval and Application

Protection class IEC	Safety class II
Mech. impact protection code	IK02

Application Conditions

Suitable for random switching	Yes
-------------------------------	-----

General Information

Order Code	Full Product Name	Light source replaceable	Product family code
910505103586	DN142B 10S/830 PSD-E WR	-	DN142B
910505103587	DN142B 10S/830 PSD-E WR IP54	-	DN142B
910505103590	DN142B 10S/840 PSD-E WR	-	DN142B
910505103591	DN142B 10S/840 PSD-E WR IP54	-	DN142B
910505103603	DN142B 10S/830 PSD-E WR ELB3	-	DN142B
910505103605	DN142B 10S/840 PSD-E WR ELB3	-	DN142B
911401551032	DN142B 10S/830 PSU-E WR	No	-
911401551132	DN142B 10S/830 PSU-E WR IP54	No	-
911401551432	DN142B 10S/840 PSU-E WR	No	-
911401551532	DN142B 10S/840 PSU-E WR IP54	No	-
910505103596	DN142B 20S/830 PSD-E UGR19	-	DN142B
910505103597	DN142B 20S/830 PSD-E UGR19 IP54	-	DN142B
910505103601	DN142B 20S/840 PSD-E UGR19	-	DN142B
910505103602	DN142B 20S/840 PSD-E UGR19 IP54	-	DN142B
910505103608	DN142B 20S/830 PSD-E UGR19 ELB3	-	DN142B
910505103610	DN142B 20S/840 PSD-E UGR19 ELB3	-	DN142B
910505103612	DN142B 20S/830 WIA-E UGR19 IP54	-	DN142B
910505103614	DN142B 20S/840 WIA-E UGR19 IP54	-	DN142B
910505103616	DN142B 20S/830 WIA-E UGR19 ELB3 IP54	-	DN142B
910505103618	DN142B 20S/840 WIA-E UGR19 ELB3 IP54	-	DN142B
911401552032	DN142B 20S/830 PSU-E UGR19	No	-
911401552132	DN142B 20S/830 PSU-E UGR19 IP54	No	-
911401552432	DN142B 20S/840 PSU-E UGR19	No	-
911401552532	DN142B 20S/840 PSU-E UGR19 IP54	No	-
910505103588	DN142B 10S/830 PSD-E UGR19	-	DN142B
910505103589	DN142B 10S/830 PSD-E UGR19 IP54	-	DN142B
910505103592	DN142B 10S/840 PSD-E UGR19	-	DN142B
910505103593	DN142B 10S/840 PSD-E UGR19 IP54	-	DN142B
910505103604	DN142B 10S/830 PSD-E UGR19 ELB3	-	DN142B
910505103606	DN142B 10S/840 PSD-E UGR19 ELB3	-	DN142B
911401551232	DN142B 10S/830 PSU-E UGR19	No	-
911401551332	DN142B 10S/830 PSU-E UGR19 IP54	No	-
911401551632	DN142B 10S/840 PSU-E UGR19	No	-
911401551732	DN142B 10S/840 PSU-E UGR19 IP54	No	-
910505103594	DN142B 20S/830 PSD-E WR	-	DN142B
910505103595	DN142B 20S/830 PSD-E WR IP54	-	DN142B
910505103598	DN142B 20S/840 PSD-E WR	-	DN142B
910505103599	DN142B 20S/840 PSD-E WR IP54	-	DN142B
910505103607	DN142B 20S/830 PSD-E WR ELB3	-	DN142B
910505103609	DN142B 20S/840 PSD-E WR ELB3	-	DN142B
910505103611	DN142B 20S/830 WIA-E WR IP54	-	DN142B
910505103613	DN142B 20S/840 WIA-E WR IP54	-	DN142B
910505103615	DN142B 20S/830 WIA-E WR ELB3 IP54	-	DN142B
910505103617	DN142B 20S/840 WIA-E WR ELB3 IP54	-	DN142B
911401551832	DN142B 20S/830 PSU-E WR	No	-
911401551932	DN142B 20S/830 PSU-E WR IP54	No	-
911401552232	DN142B 20S/840 PSU-E WR	No	-
911401552332	DN142B 20S/840 PSU-E WR IP54	No	-

Light Technical (1/2)

CoreLine Downlight gen5

Order Code	Full Product Name	Correlated Color Temperature (Nom)	Luminous Efficacy (rated) (Nom)	Luminous Flux	Optic type
		(K)	(lm/W)	(lm)	
910505103586	DN142B 10S/830 PSD-E WR	3000 K	112 lm/W	1,200 lm	White reflector perforated without louver
910505103587	DN142B 10S/830 PSD-E WR IP54	3000 K	112 lm/W	1,200 lm	White reflector perforated without louver
910505103590	DN142B 10S/840 PSD-E WR	4000 K	112 lm/W	1,200 lm	White reflector perforated without louver
910505103591	DN142B 10S/840 PSD-E WR IP54	4000 K	112 lm/W	1,200 lm	White reflector perforated without louver
910505103603	DN142B 10S/830 PSD-E WR ELB3	3000 K	80 lm/W	1,200 lm	White reflector perforated without louver
910505103605	DN142B 10S/840 PSD-E WR ELB3	4000 K	80 lm/W	1,200 lm	White reflector perforated without louver
911401551032	DN142B 10S/830 PSU-E WR	3000 K	122 lm/W	1,200 lm	-
911401551132	DN142B 10S/830 PSU-E WR IP54	3000 K	122 lm/W	1,200 lm	-
911401551432	DN142B 10S/840 PSU-E WR	4000 K	122 lm/W	1,200 lm	-
911401551532	DN142B 10S/840 PSU-E WR IP54	4000 K	122 lm/W	1,200 lm	-
910505103596	DN142B 20S/830 PSD-E UGR19	3000 K	110 lm/W	2,250 lm	Facetted reflector
910505103597	DN142B 20S/830	3000 K	110 lm/W	2,250 lm	Facetted reflector

Order Code	Full Product Name	Correlated Color Temperature (Nom)	Luminous Efficacy (rated) (Nom)	Luminous Flux	Optic type
		(K)	(lm/W)	(lm)	
	PSD-E UGR19 IP54				
910505103601	DN142B 20S/840 PSD-E UGR19	4000 K	110 lm/W	2,250 lm	Facetted reflector
910505103602	DN142B 20S/840 PSD-E UGR19 IP54	4000 K	110 lm/W	2,250 lm	Facetted reflector
910505103608	DN142B 20S/830 PSD-E UGR19 ELB3	3000 K	92 lm/W	2,250 lm	Facetted reflector
910505103610	DN142B 20S/840 PSD-E UGR19 ELB3	4000 K	92 lm/W	2,250 lm	Facetted reflector
910505103612	DN142B 20S/830 WIA-E UGR19 IP54	3000 K	111 lm/W	2,250 lm	Facetted reflector
910505103614	DN142B 20S/840 WIA-E UGR19 IP54	4000 K	111 lm/W	2,250 lm	Facetted reflector
910505103616	DN142B 20S/830 WIA-E UGR19 ELB3 IP54	3000 K	91 lm/W	2,250 lm	Facetted reflector
910505103618	DN142B 20S/840 WIA-E UGR19 ELB3 IP54	4000 K	91 lm/W	2,250 lm	Facetted reflector
911401552032	DN142B 20S/830 PSU-E UGR19	3000 K	120 lm/W	2,300 lm	-
911401552132	DN142B 20S/830 PSU-E UGR19 IP54	3000 K	120 lm/W	2,300 lm	-
911401552432	DN142B 20S/840 PSU-E UGR19	4000 K	120 lm/W	2,300 lm	-
911401552532	DN142B 20S/840 PSU-E UGR19 IP54	4000 K	120 lm/W	2,300 lm	-

CoreLine Downlight gen5

Order Code	Full Product Name	Correlated Color	Luminous Efficacy	Luminous Flux	Optic type
		Temperature (Nom)	(rated) (Nom)	(lm/W)	
910505103588	DN142B 10S/830 PSD-E UGR19	3000 K	107 lm/W	1,150 lm	Facetted reflector
910505103589	DN142B 10S/830 PSD-E UGR19 IP54	3000 K	107 lm/W	1,150 lm	Facetted reflector
910505103592	DN142B 10S/840 PSD-E UGR19	4000 K	107 lm/W	1,150 lm	Facetted reflector
910505103593	DN142B 10S/840 PSD-E UGR19 IP54	4000 K	107 lm/W	1,150 lm	Facetted reflector
910505103604	DN142B 10S/830 PSD-E UGR19 ELB3	3000 K	77 lm/W	1,150 lm	Facetted reflector
910505103606	DN142B 10S/840 PSD-E UGR19 ELB3	4000 K	77 lm/W	1,150 lm	Facetted reflector
911401551232	DN142B 10S/830 PSU-E UGR19	3000 K	117 lm/W	1,200 lm	-
911401551332	DN142B 10S/830 PSU-E UGR19 IP54	3000 K	117 lm/W	1,200 lm	-
911401551632	DN142B 10S/840 PSU-E UGR19	4000 K	117 lm/W	1,200 lm	-
911401551732	DN142B 10S/840 PSU-E UGR19 IP54	4000 K	117 lm/W	1,200 lm	-
910505103594	DN142B 20S/830 PSD-E WR	3000 K	116 lm/W	2,350 lm	White reflector perforated without louver
910505103595	DN142B 20S/830 PSD-E WR IP54	3000 K	116 lm/W	2,350 lm	White reflector perforated without louver
910505103598	DN142B 20S/840 PSD-E WR	4000 K	116 lm/W	2,350 lm	White reflector perforated

Order Code	Full Product Name	Correlated Color	Luminous Efficacy	Luminous Flux	Optic type
		Temperature (Nom)	(rated) (Nom)	(lm/W)	
910505103599	DN142B 20S/840 PSD-E WR IP54	4000 K	116 lm/W	2,350 lm	White reflector perforated without louver
910505103607	DN142B 20S/830 PSD-E WR ELB3	3000 K	96 lm/W	2,350 lm	White reflector perforated without louver
910505103609	DN142B 20S/840 PSD-E WR ELB3	4000 K	96 lm/W	2,350 lm	White reflector perforated without louver
910505103611	DN142B 20S/830 WIA-E WR IP54	3000 K	116 lm/W	2,350 lm	White reflector perforated without louver
910505103613	DN142B 20S/840 WIA-E WR IP54	4000 K	117 lm/W	2,350 lm	White reflector perforated without louver
910505103615	DN142B 20S/830 WIA-E WR ELB3 IP54	3000 K	95 lm/W	2,350 lm	White reflector perforated without louver
910505103617	DN142B 20S/840 WIA-E WR ELB3 IP54	4000 K	95 lm/W	2,350 lm	White reflector perforated without louver
911401551832	DN142B 20S/830 PSU-E WR	3000 K	122 lm/W	2,350 lm	-
911401551932	DN142B 20S/830 PSU-E WR IP54	3000 K	122 lm/W	2,350 lm	-
911401552232	DN142B 20S/840 PSU-E WR	4000 K	122 lm/W	2,350 lm	-
911401552332	DN142B 20S/840	4000 K	122 lm/W	2,350 lm	-

CoreLine Downlight gen5

Order Code	Full Product Name	Correlated Color Temperature (Nom)	Luminous Efficacy (rated) (Nom)	Luminous Flux	Optic type
	PSU-E WR				
	IP54				

Light Technical (2/2)

Order Code	Full Product Name	Flickering value (PstLM) - Flickering value as per EN 61000-3-3
910505103586	DN142B 10S/830 PSD-E WR	-
910505103587	DN142B 10S/830 PSD-E WR IP54	-
910505103590	DN142B 10S/840 PSD-E WR	-
910505103591	DN142B 10S/840 PSD-E WR IP54	-
910505103603	DN142B 10S/830 PSD-E WR ELB3	-
910505103605	DN142B 10S/840 PSD-E WR ELB3	-
911401551032	DN142B 10S/830 PSU-E WR	0.5
911401551132	DN142B 10S/830 PSU-E WR IP54	0.5
911401551432	DN142B 10S/840 PSU-E WR	0.5
911401551532	DN142B 10S/840 PSU-E WR IP54	0.5
910505103596	DN142B 20S/830 PSD-E UGR19	-
910505103597	DN142B 20S/830 PSD-E UGR19 IP54	-
910505103601	DN142B 20S/840 PSD-E UGR19	-
910505103602	DN142B 20S/840 PSD-E UGR19 IP54	-
910505103608	DN142B 20S/830 PSD-E UGR19 ELB3	-
910505103610	DN142B 20S/840 PSD-E UGR19 ELB3	-
910505103612	DN142B 20S/830 WIA-E UGR19 IP54	-
910505103614	DN142B 20S/840 WIA-E UGR19 IP54	-
910505103616	DN142B 20S/830 WIA-E UGR19 ELB3 IP54	-
910505103618	DN142B 20S/840 WIA-E UGR19 ELB3 IP54	-
911401552032	DN142B 20S/830 PSU-E UGR19	0.5
911401552132	DN142B 20S/830 PSU-E UGR19 IP54	0.5
911401552432	DN142B 20S/840 PSU-E UGR19	0.5
911401552532	DN142B 20S/840 PSU-E UGR19 IP54	0.5

Order Code	Full Product Name	Flickering value (PstLM) - Flickering value as per EN 61000-3-3
910505103588	DN142B 10S/830 PSD-E UGR19	-
910505103589	DN142B 10S/830 PSD-E UGR19 IP54	-
910505103592	DN142B 10S/840 PSD-E UGR19	-
910505103593	DN142B 10S/840 PSD-E UGR19 IP54	-
910505103604	DN142B 10S/830 PSD-E UGR19 ELB3	-
910505103606	DN142B 10S/840 PSD-E UGR19 ELB3	-
911401551232	DN142B 10S/830 PSU-E UGR19	0.5
911401551332	DN142B 10S/830 PSU-E UGR19 IP54	0.5
911401551632	DN142B 10S/840 PSU-E UGR19	0.5
911401551732	DN142B 10S/840 PSU-E UGR19 IP54	0.5
910505103594	DN142B 20S/830 PSD-E WR	-
910505103595	DN142B 20S/830 PSD-E WR IP54	-
910505103598	DN142B 20S/840 PSD-E WR	-
910505103599	DN142B 20S/840 PSD-E WR IP54	-
910505103607	DN142B 20S/830 PSD-E WR ELB3	-
910505103609	DN142B 20S/840 PSD-E WR ELB3	-
910505103611	DN142B 20S/830 WIA-E WR IP54	-
910505103613	DN142B 20S/840 WIA-E WR IP54	-
910505103615	DN142B 20S/830 WIA-E WR ELB3 IP54	-
910505103617	DN142B 20S/840 WIA-E WR ELB3 IP54	-
911401551832	DN142B 20S/830 PSU-E WR	0.5
911401551932	DN142B 20S/830 PSU-E WR IP54	0.5
911401552232	DN142B 20S/840 PSU-E WR	0.5
911401552332	DN142B 20S/840 PSU-E WR IP54	0.5

Operating and Electrical

Order Code	Full Product Name	Input Voltage	Power Consumption
910505103586	DN142B 10S/830 PSD-E WR	220 to 240 V	10.7 W
910505103587	DN142B 10S/830 PSD-E WR IP54	220 to 240 V	10.7 W
910505103590	DN142B 10S/840 PSD-E WR	220 to 240 V	10.7 W
910505103591	DN142B 10S/840 PSD-E WR IP54	220 to 240 V	10.7 W
910505103603	DN142B 10S/830 PSD-E WR ELB3	220 to 240 V	14.9 W
910505103605	DN142B 10S/840 PSD-E WR ELB3	220 to 240 V	14.9 W
911401551032	DN142B 10S/830 PSU-E WR	220-240 V	9.8 W
911401551132	DN142B 10S/830 PSU-E WR IP54	220-240 V	9.8 W
911401551432	DN142B 10S/840 PSU-E WR	220-240 V	9.8 W
911401551532	DN142B 10S/840 PSU-E WR IP54	220-240 V	9.8 W
910505103596	DN142B 20S/830 PSD-E UGR19	220 to 240 V	20.5 W

Order Code	Full Product Name	Input Voltage	Power Consumption
910505103597	DN142B 20S/830 PSD-E UGR19 IP54	220 to 240 V	20.5 W
910505103601	DN142B 20S/840 PSD-E UGR19	220 to 240 V	20.5 W
910505103602	DN142B 20S/840 PSD-E UGR19 IP54	220 to 240 V	20.5 W
910505103608	DN142B 20S/830 PSD-E UGR19 ELB3	220 to 240 V	24.5 W
910505103610	DN142B 20S/840 PSD-E UGR19 ELB3	220 to 240 V	24.5 W
910505103612	DN142B 20S/830 WIA-E UGR19 IP54	220 to 240 V	20.4 W

CoreLine Downlight gen5

Order Code	Full Product Name	Input Voltage	Power Consumption
910505103614	DN142B 20S/840 WIA-E UGR19 IP54	220 to 240 V	20.4 W
910505103616	DN142B 20S/830 WIA-E UGR19 ELB3 IP54	220 to 240 V	24.9 W
910505103618	DN142B 20S/840 WIA-E UGR19 ELB3 IP54	220 to 240 V	24.9 W
911401552032	DN142B 20S/830 PSU-E UGR19	220-240 V	19.2 W
911401552132	DN142B 20S/830 PSU-E UGR19 IP54	220-240 V	19.2 W
911401552432	DN142B 20S/840 PSU-E UGR19	220-240 V	19.2 W
911401552532	DN142B 20S/840 PSU-E UGR19 IP54	220-240 V	19.2 W
910505103588	DN142B 10S/830 PSD-E UGR19	220 to 240 V	10.7 W
910505103589	DN142B 10S/830 PSD-E UGR19 IP54	220 to 240 V	10.7 W
910505103592	DN142B 10S/840 PSD-E UGR19	220 to 240 V	10.7 W
910505103593	DN142B 10S/840 PSD-E UGR19 IP54	220 to 240 V	10.7 W
910505103604	DN142B 10S/830 PSD-E UGR19 ELB3	220 to 240 V	14.9 W
910505103606	DN142B 10S/840 PSD-E UGR19 ELB3	220 to 240 V	14.9 W

Order Code	Full Product Name	Input Voltage	Power Consumption
911401551232	DN142B 10S/830 PSU-E UGR19	220-240 V	9.8 W
911401551332	DN142B 10S/830 PSU-E UGR19 IP54	220-240 V	9.8 W
911401551632	DN142B 10S/840 PSU-E UGR19	220-240 V	9.8 W
911401551732	DN142B 10S/840 PSU-E UGR19 IP54	220-240 V	9.8 W
910505103594	DN142B 20S/830 PSD-E WR	220 to 240 V	20.5 W
910505103595	DN142B 20S/830 PSD-E WR IP54	220 to 240 V	20.5 W
910505103598	DN142B 20S/840 PSD-E WR	220 to 240 V	20.5 W
910505103599	DN142B 20S/840 PSD-E WR IP54	220 to 240 V	20.5 W
910505103607	DN142B 20S/830 PSD-E WR ELB3	220 to 240 V	24.5 W
910505103609	DN142B 20S/840 PSD-E WR ELB3	220 to 240 V	24.5 W
910505103611	DN142B 20S/830 WIA-E WR IP54	220 to 240 V	20.4 W
910505103613	DN142B 20S/840 WIA-E WR IP54	220 to 240 V	20.4 W
910505103615	DN142B 20S/830 WIA-E WR ELB3 IP54	220 to 240 V	24.9 W
910505103617	DN142B 20S/840 WIA-E WR ELB3 IP54	220 to 240 V	24.9 W
911401551832	DN142B 20S/830 PSU-E WR	220-240 V	19.2 W
911401551932	DN142B 20S/830 PSU-E WR IP54	220-240 V	19.2 W
911401552232	DN142B 20S/840 PSU-E WR	220-240 V	19.2 W
911401552332	DN142B 20S/840 PSU-E WR IP54	220-240 V	19.2 W

Controls and Dimming

Order Code	Full Product Name	Dimmable
910505103586	DN142B 10S/830 PSD-E WR	Yes
910505103587	DN142B 10S/830 PSD-E WR IP54	Yes
910505103590	DN142B 10S/840 PSD-E WR	Yes
910505103591	DN142B 10S/840 PSD-E WR IP54	Yes
910505103603	DN142B 10S/830 PSD-E WR ELB3	Yes
910505103605	DN142B 10S/840 PSD-E WR ELB3	Yes
911401551032	DN142B 10S/830 PSU-E WR	No
911401551132	DN142B 10S/830 PSU-E WR IP54	No
911401551432	DN142B 10S/840 PSU-E WR	No
911401551532	DN142B 10S/840 PSU-E WR IP54	No
910505103596	DN142B 20S/830 PSD-E UGR19	Yes
910505103597	DN142B 20S/830 PSD-E UGR19 IP54	Yes
910505103601	DN142B 20S/840 PSD-E UGR19	Yes
910505103602	DN142B 20S/840 PSD-E UGR19 IP54	Yes
910505103608	DN142B 20S/830 PSD-E UGR19 ELB3	Yes
910505103610	DN142B 20S/840 PSD-E UGR19 ELB3	Yes
910505103612	DN142B 20S/830 WIA-E UGR19 IP54	Yes
910505103614	DN142B 20S/840 WIA-E UGR19 IP54	Yes
910505103616	DN142B 20S/830 WIA-E UGR19 ELB3 IP54	Yes
910505103618	DN142B 20S/840 WIA-E UGR19 ELB3 IP54	Yes
911401552032	DN142B 20S/830 PSU-E UGR19	No
911401552132	DN142B 20S/830 PSU-E UGR19 IP54	No
911401552432	DN142B 20S/840 PSU-E UGR19	No
911401552532	DN142B 20S/840 PSU-E UGR19 IP54	No

Order Code	Full Product Name	Dimmable
910505103588	DN142B 10S/830 PSD-E UGR19	Yes
910505103589	DN142B 10S/830 PSD-E UGR19 IP54	Yes
910505103592	DN142B 10S/840 PSD-E UGR19	Yes
910505103593	DN142B 10S/840 PSD-E UGR19 IP54	Yes
910505103604	DN142B 10S/830 PSD-E UGR19 ELB3	Yes
910505103606	DN142B 10S/840 PSD-E UGR19 ELB3	Yes
911401551232	DN142B 10S/830 PSU-E UGR19	No
911401551332	DN142B 10S/830 PSU-E UGR19 IP54	No
911401551632	DN142B 10S/840 PSU-E UGR19	No
911401551732	DN142B 10S/840 PSU-E UGR19 IP54	No
910505103594	DN142B 20S/830 PSD-E WR	Yes
910505103595	DN142B 20S/830 PSD-E WR IP54	Yes
910505103598	DN142B 20S/840 PSD-E WR	Yes
910505103599	DN142B 20S/840 PSD-E WR IP54	Yes
910505103607	DN142B 20S/830 PSD-E WR ELB3	Yes
910505103609	DN142B 20S/840 PSD-E WR ELB3	Yes
910505103611	DN142B 20S/830 WIA-E WR IP54	Yes
910505103613	DN142B 20S/840 WIA-E WR IP54	Yes
910505103615	DN142B 20S/830 WIA-E WR ELB3 IP54	Yes
910505103617	DN142B 20S/840 WIA-E WR ELB3 IP54	Yes
911401551832	DN142B 20S/830 PSU-E WR	No
911401551932	DN142B 20S/830 PSU-E WR IP54	No
911401552232	DN142B 20S/840 PSU-E WR	No
911401552332	DN142B 20S/840 PSU-E WR IP54	No

Mechanical and Housing

CoreLine Downlight gen5

Order Code	Full Product Name	Housing Color
910505103586	DN142B 10S/830 PSD-E WR	White RAL9010
910505103587	DN142B 10S/830 PSD-E WR IP54	White RAL9010
910505103590	DN142B 10S/840 PSD-E WR	White RAL9010
910505103591	DN142B 10S/840 PSD-E WR IP54	White RAL9010
910505103603	DN142B 10S/830 PSD-E WR ELB3	White RAL9010
910505103605	DN142B 10S/840 PSD-E WR ELB3	White RAL9010
911401551032	DN142B 10S/830 PSU-E WR	White
911401551132	DN142B 10S/830 PSU-E WR IP54	White
911401551432	DN142B 10S/840 PSU-E WR	White
911401551532	DN142B 10S/840 PSU-E WR IP54	White
910505103596	DN142B 20S/830 PSD-E UGR19	White RAL9010
910505103597	DN142B 20S/830 PSD-E UGR19 IP54	White RAL9010
910505103601	DN142B 20S/840 PSD-E UGR19	White RAL9010
910505103602	DN142B 20S/840 PSD-E UGR19 IP54	White RAL9010
910505103608	DN142B 20S/830 PSD-E UGR19 ELB3	White RAL9010
910505103610	DN142B 20S/840 PSD-E UGR19 ELB3	White RAL9010
910505103612	DN142B 20S/830 WIA-E UGR19 IP54	White RAL9010
910505103614	DN142B 20S/840 WIA-E UGR19 IP54	White RAL9010
910505103616	DN142B 20S/830 WIA-E UGR19 ELB3 IP54	White RAL9010
910505103618	DN142B 20S/840 WIA-E UGR19 ELB3 IP54	White RAL9010
911401552032	DN142B 20S/830 PSU-E UGR19	White
911401552132	DN142B 20S/830 PSU-E UGR19 IP54	White
911401552432	DN142B 20S/840 PSU-E UGR19	White
911401552532	DN142B 20S/840 PSU-E UGR19 IP54	White

Order Code	Full Product Name	Housing Color
910505103588	DN142B 10S/830 PSD-E UGR19	White RAL9010
910505103589	DN142B 10S/830 PSD-E UGR19 IP54	White RAL9010
910505103592	DN142B 10S/840 PSD-E UGR19	White RAL9010
910505103593	DN142B 10S/840 PSD-E UGR19 IP54	White RAL9010
910505103604	DN142B 10S/830 PSD-E UGR19 ELB3	White RAL9010
910505103606	DN142B 10S/840 PSD-E UGR19 ELB3	White RAL9010
911401551232	DN142B 10S/830 PSU-E UGR19	White
911401551332	DN142B 10S/830 PSU-E UGR19 IP54	White
911401551632	DN142B 10S/840 PSU-E UGR19	White
911401551732	DN142B 10S/840 PSU-E UGR19 IP54	White
910505103594	DN142B 20S/830 PSD-E WR	White RAL9010
910505103595	DN142B 20S/830 PSD-E WR IP54	White RAL9010
910505103598	DN142B 20S/840 PSD-E WR	White RAL9010
910505103599	DN142B 20S/840 PSD-E WR IP54	White RAL9010
910505103607	DN142B 20S/830 PSD-E WR ELB3	White RAL9010
910505103609	DN142B 20S/840 PSD-E WR ELB3	White RAL9010
910505103611	DN142B 20S/830 WIA-E WR IP54	White RAL9010
910505103613	DN142B 20S/840 WIA-E WR IP54	White RAL9010
910505103615	DN142B 20S/830 WIA-E WR ELB3 IP54	White RAL9010
910505103617	DN142B 20S/840 WIA-E WR ELB3 IP54	White RAL9010
911401551832	DN142B 20S/830 PSU-E WR	White
911401551932	DN142B 20S/830 PSU-E WR IP54	White
911401552232	DN142B 20S/840 PSU-E WR	White
911401552332	DN142B 20S/840 PSU-E WR IP54	White

Emergency Operation

Order Code	Full Product Name	Power consumption during Central DC emergency mode
910505103586	DN142B 10S/830 PSD-E WR	-
910505103587	DN142B 10S/830 PSD-E WR IP54	-
910505103590	DN142B 10S/840 PSD-E WR	-
910505103591	DN142B 10S/840 PSD-E WR IP54	-
910505103603	DN142B 10S/830 PSD-E WR ELB3	140 W
910505103605	DN142B 10S/840 PSD-E WR ELB3	140 W
911401551032	DN142B 10S/830 PSU-E WR	-
911401551132	DN142B 10S/830 PSU-E WR IP54	-
911401551432	DN142B 10S/840 PSU-E WR	-
911401551532	DN142B 10S/840 PSU-E WR IP54	-
910505103596	DN142B 20S/830 PSD-E UGR19	-
910505103597	DN142B 20S/830 PSD-E UGR19 IP54	-
910505103601	DN142B 20S/840 PSD-E UGR19	-
910505103602	DN142B 20S/840 PSD-E UGR19 IP54	-
910505103608	DN142B 20S/830 PSD-E UGR19 ELB3	132 W
910505103610	DN142B 20S/840 PSD-E UGR19 ELB3	132 W
910505103612	DN142B 20S/830 WIA-E UGR19 IP54	-
910505103614	DN142B 20S/840 WIA-E UGR19 IP54	-
910505103616	DN142B 20S/830 WIA-E UGR19 ELB3 IP54	132 W
910505103618	DN142B 20S/840 WIA-E UGR19 ELB3 IP54	132 W
911401552032	DN142B 20S/830 PSU-E UGR19	-
911401552132	DN142B 20S/830 PSU-E UGR19 IP54	-

Order Code	Full Product Name	Power consumption during Central DC emergency mode
911401552432	DN142B 20S/840 PSU-E UGR19	-
911401552532	DN142B 20S/840 PSU-E UGR19 IP54	-
910505103588	DN142B 10S/830 PSD-E UGR19	-
910505103589	DN142B 10S/830 PSD-E UGR19 IP54	-
910505103592	DN142B 10S/840 PSD-E UGR19	-
910505103593	DN142B 10S/840 PSD-E UGR19 IP54	-
910505103604	DN142B 10S/830 PSD-E UGR19 ELB3	133 W
910505103606	DN142B 10S/840 PSD-E UGR19 ELB3	133 W
911401551232	DN142B 10S/830 PSU-E UGR19	-
911401551332	DN142B 10S/830 PSU-E UGR19 IP54	-
911401551632	DN142B 10S/840 PSU-E UGR19	-
911401551732	DN142B 10S/840 PSU-E UGR19 IP54	-
910505103594	DN142B 20S/830 PSD-E WR	-
910505103595	DN142B 20S/830 PSD-E WR IP54	-
910505103598	DN142B 20S/840 PSD-E WR	-
910505103599	DN142B 20S/840 PSD-E WR IP54	-
910505103607	DN142B 20S/830 PSD-E WR ELB3	139 W
910505103609	DN142B 20S/840 PSD-E WR ELB3	139 W
910505103611	DN142B 20S/830 WIA-E WR IP54	-
910505103613	DN142B 20S/840 WIA-E WR IP54	-
910505103615	DN142B 20S/830 WIA-E WR ELB3 IP54	139 W
910505103617	DN142B 20S/840 WIA-E WR ELB3 IP54	139 W

CoreLine Downlight gen5

Order Code	Full Product Name	Power consumption during Central DC emergency mode
911401551832	DN142B 20S/830 PSU-E WR	-
911401551932	DN142B 20S/830 PSU-E WR IP54	-

Order Code	Full Product Name	Power consumption during Central DC emergency mode
911401552232	DN142B 20S/840 PSU-E WR	-
911401552332	DN142B 20S/840 PSU-E WR IP54	-

Approval and Application

Order Code	Full Product Name	Ingress protection code
910505103586	DN142B 10S/830 PSD-E WR	IP20
910505103587	DN142B 10S/830 PSD-E WR IP54	IP20/54
910505103590	DN142B 10S/840 PSD-E WR	IP20
910505103591	DN142B 10S/840 PSD-E WR IP54	IP20/54
910505103603	DN142B 10S/830 PSD-E WR ELB3	IP20
910505103605	DN142B 10S/840 PSD-E WR ELB3	IP20
911401551032	DN142B 10S/830 PSU-E WR	IP20
911401551132	DN142B 10S/830 PSU-E WR IP54	IP20/54
911401551432	DN142B 10S/840 PSU-E WR	IP20
911401551532	DN142B 10S/840 PSU-E WR IP54	IP20/54
910505103596	DN142B 20S/830 PSD-E UGR19	IP20
910505103597	DN142B 20S/830 PSD-E UGR19 IP54	IP20/54
910505103601	DN142B 20S/840 PSD-E UGR19	IP20
910505103602	DN142B 20S/840 PSD-E UGR19 IP54	IP20/54
910505103608	DN142B 20S/830 PSD-E UGR19 ELB3	IP20
910505103610	DN142B 20S/840 PSD-E UGR19 ELB3	IP20
910505103612	DN142B 20S/830 WIA-E UGR19 IP54	IP20
910505103614	DN142B 20S/840 WIA-E UGR19 IP54	IP20
910505103616	DN142B 20S/830 WIA-E UGR19 ELB3 IP54	IP20
910505103618	DN142B 20S/840 WIA-E UGR19 ELB3 IP54	IP20
911401552032	DN142B 20S/830 PSU-E UGR19	IP20
911401552132	DN142B 20S/830 PSU-E UGR19 IP54	IP20/54
911401552432	DN142B 20S/840 PSU-E UGR19	IP20
911401552532	DN142B 20S/840 PSU-E UGR19 IP54	IP20/54

Order Code	Full Product Name	Ingress protection code
910505103588	DN142B 10S/830 PSD-E UGR19	IP20
910505103589	DN142B 10S/830 PSD-E UGR19 IP54	IP20/54
910505103592	DN142B 10S/840 PSD-E UGR19	IP20
910505103593	DN142B 10S/840 PSD-E UGR19 IP54	IP20/54
910505103604	DN142B 10S/830 PSD-E UGR19 ELB3	IP20
910505103606	DN142B 10S/840 PSD-E UGR19 ELB3	IP20
911401551232	DN142B 10S/830 PSU-E UGR19	IP20
911401551332	DN142B 10S/830 PSU-E UGR19 IP54	IP20/54
911401551632	DN142B 10S/840 PSU-E UGR19	IP20
911401551732	DN142B 10S/840 PSU-E UGR19 IP54	IP20/54
910505103594	DN142B 20S/830 PSD-E WR	IP20
910505103595	DN142B 20S/830 PSD-E WR IP54	IP20/54
910505103598	DN142B 20S/840 PSD-E WR	IP20
910505103599	DN142B 20S/840 PSD-E WR IP54	IP20/54
910505103607	DN142B 20S/830 PSD-E WR ELB3	IP20
910505103609	DN142B 20S/840 PSD-E WR ELB3	IP20
910505103611	DN142B 20S/830 WIA-E WR IP54	IP20
910505103613	DN142B 20S/840 WIA-E WR IP54	IP20
910505103615	DN142B 20S/830 WIA-E WR ELB3 IP54	IP20
910505103617	DN142B 20S/840 WIA-E WR ELB3 IP54	IP20
911401551832	DN142B 20S/830 PSU-E WR	IP20
911401551932	DN142B 20S/830 PSU-E WR IP54	IP20/54
911401552232	DN142B 20S/840 PSU-E WR	IP20
911401552332	DN142B 20S/840 PSU-E WR IP54	IP20/54

Initial Performance (IEC Compliant)

Order Code	Full Product Name	Initial chromaticity	Luminous flux tolerance
910505103586	DN142B 10S/830 PSD-E WR	(0.432,0.404)	-10% / +10%
		SDCM \leq 5	
910505103587	DN142B 10S/830 PSD-E WR IP54	(0.435,0.405)	-10% / +10%
		SDCM \leq 5	
910505103590	DN142B 10S/840 PSD-E WR	(0.380,0.377)	-10% / +10%
		SDCM \leq 5	
910505103591	DN142B 10S/840 PSD-E WR IP54	(0.380,0.377)	-10% / +10%
		SDCM \leq 5	
910505103603	DN142B 10S/830 PSD-E WR ELB3	(0.435,0.405)	-10% / +10%
		SDCM \leq 5	
910505103605	DN142B 10S/840 PSD-E WR ELB3	(0.380,0.377)	-10% / +10%
		SDCM \leq 5	
911401551032	DN142B 10S/830 PSU-E WR	(0.432,0.404)	+/-10%
		SDCM \leq 5	

Order Code	Full Product Name	Initial chromaticity	Luminous flux tolerance
911401551132	DN142B 10S/830 PSU-E WR IP54	(0.435,0.405)	+/-10%
		SDCM \leq 5	
911401551432	DN142B 10S/840 PSU-E WR	(0.380,0.377)	+/-10%
		SDCM \leq 5	
911401551532	DN142B 10S/840 PSU-E WR IP54	(0.380,0.377)	+/-10%
		SDCM \leq 5	
910505103596	DN142B 20S/830 PSD-E UGR19	(0.435,0.404)	-10% / +10%
		SDCM \leq 5	
910505103597	DN142B 20S/830 PSD-E UGR19 IP54	(0.435,0.404)	-10% / +10%
		SDCM \leq 5	
910505103601	DN142B 20S/840 PSD-E UGR19	(0.380,0.377)	-10% / +10%
		SDCM \leq 5	
910505103602	DN142B 20S/840 PSD-E UGR19 IP54	(0.380,0.377)	-10% / +10%
		SDCM \leq 5	

CoreLine Downlight gen5

Order Code	Full Product Name	Initial chromaticity	Luminous flux tolerance
910505103608	DN142B 20S/830 PSD-E UGR19 ELB3	(0.435,0.404) SDCM \leq 5	-10% / +10%
910505103610	DN142B 20S/840 PSD-E UGR19 ELB3	(0.380,0.377) SDCM \leq 5	-10% / +10%
910505103612	DN142B 20S/830 WIA-E UGR19 IP54	(0.435,0.404) SDCM \leq 5	-10% / +10%
910505103614	DN142B 20S/840 WIA-E UGR19 IP54	(0.380,0.377) SDCM \leq 5	-10% / +10%
910505103616	DN142B 20S/830 WIA-E UGR19 ELB3 IP54	(0.435,0.404) SDCM \leq 5	-10% / +10%
910505103618	DN142B 20S/840 WIA-E UGR19 ELB3 IP54	(0.380,0.377) SDCM \leq 5	-10% / +10%
911401552032	DN142B 20S/830 PSU-E UGR19	(0.435,0.404) SDCM \leq 5	+/-10%
911401552132	DN142B 20S/830 PSU-E UGR19 IP54	(0.435,0.404) SDCM \leq 5	+/-10%
911401552432	DN142B 20S/840 PSU-E UGR19	(0.380,0.377) SDCM \leq 5	+/-10%
911401552532	DN142B 20S/840 PSU-E UGR19 IP54	(0.380,0.377) SDCM \leq 5	+/-10%
910505103588	DN142B 10S/830 PSD-E UGR19	(0.432,0.404) SDCM \leq 5	-10% / +10%
910505103589	DN142B 10S/830 PSD-E UGR19 IP54	(0.435,0.405) SDCM \leq 5	-10% / +10%
910505103592	DN142B 10S/840 PSD-E UGR19	(0.380,0.377) SDCM \leq 5	-10% / +10%
910505103593	DN142B 10S/840 PSD-E UGR19 IP54	(0.380,0.377) SDCM \leq 5	-10% / +10%
910505103604	DN142B 10S/830 PSD-E UGR19 ELB3	(0.435,0.405) SDCM \leq 5	-10% / +10%
910505103606	DN142B 10S/840 PSD-E UGR19 ELB3	(0.380,0.377) SDCM \leq 5	-10% / +10%
911401551232	DN142B 10S/830 PSU-E UGR19	(0.435,0.404) SDCM \leq 5	+/-10%

Order Code	Full Product Name	Initial chromaticity	Luminous flux tolerance
911401551332	DN142B 10S/830 PSU-E UGR19 IP54	(0.435,0.405) SDCM \leq 5	+/-10%
911401551632	DN142B 10S/840 PSU-E UGR19	(0.380,0.377) SDCM \leq 5	+/-10%
911401551732	DN142B 10S/840 PSU-E UGR19 IP54	(0.380,0.377) SDCM \leq 5	+/-10%
910505103594	DN142B 20S/830 PSD-E WR	(0.435,0.404) SDCM \leq 5	-10% / +10%
910505103595	DN142B 20S/830 PSD-E WR IP54	(0.435,0.404) SDCM \leq 5	-10% / +10%
910505103598	DN142B 20S/840 PSD-E WR	(0.380,0.377) SDCM \leq 5	-10% / +10%
910505103599	DN142B 20S/840 PSD-E WR IP54	(0.380,0.377) SDCM \leq 5	-10% / +10%
910505103607	DN142B 20S/830 PSD-E WR ELB3	(0.435,0.404) SDCM \leq 5	-10% / +10%
910505103609	DN142B 20S/840 PSD-E WR ELB3	(0.380,0.377) SDCM \leq 5	-10% / +10%
910505103611	DN142B 20S/830 WIA-E WR IP54	(0.435,0.404) SDCM \leq 5	-10% / +10%
910505103613	DN142B 20S/840 WIA-E WR IP54	(0.380,0.377) SDCM \leq 5	-10% / +10%
910505103615	DN142B 20S/830 WIA-E WR ELB3 IP54	(0.435,0.404) SDCM \leq 5	-10% / +10%
910505103617	DN142B 20S/840 WIA-E WR ELB3 IP54	(0.380,0.377) SDCM \leq 5	-10% / +10%
911401551832	DN142B 20S/830 PSU-E WR	(0.435,0.404) SDCM \leq 5	+/-10%
911401551932	DN142B 20S/830 PSU-E WR IP54	(0.435,0.404) SDCM \leq 5	+/-10%
911401552232	DN142B 20S/840 PSU-E WR	(0.380,0.377) SDCM \leq 5	+/-10%
911401552332	DN142B 20S/840 PSU-E WR IP54	(0.380,0.377) SDCM \leq 5	+/-10%

Application Conditions

Order Code	Full Product Name	Maximum dim level
910505103586	DN142B 10S/830 PSD-E WR	-
910505103587	DN142B 10S/830 PSD-E WR IP54	-
910505103590	DN142B 10S/840 PSD-E WR	-
910505103591	DN142B 10S/840 PSD-E WR IP54	-
910505103603	DN142B 10S/830 PSD-E WR ELB3	-
910505103605	DN142B 10S/840 PSD-E WR ELB3	-
911401551032	DN142B 10S/830 PSU-E WR	Not applicable
911401551132	DN142B 10S/830 PSU-E WR IP54	Not applicable
911401551432	DN142B 10S/840 PSU-E WR	Not applicable
911401551532	DN142B 10S/840 PSU-E WR IP54	Not applicable
910505103596	DN142B 20S/830 PSD-E UGR19	-
910505103597	DN142B 20S/830 PSD-E UGR19 IP54	-
910505103601	DN142B 20S/840 PSD-E UGR19	-

Order Code	Full Product Name	Maximum dim level
910505103602	DN142B 20S/840 PSD-E UGR19 IP54	-
910505103608	DN142B 20S/830 PSD-E UGR19 ELB3	-
910505103610	DN142B 20S/840 PSD-E UGR19 ELB3	-
910505103612	DN142B 20S/830 WIA-E UGR19 IP54	-
910505103614	DN142B 20S/840 WIA-E UGR19 IP54	-
910505103616	DN142B 20S/830 WIA-E UGR19 ELB3 IP54	-
910505103618	DN142B 20S/840 WIA-E UGR19 ELB3 IP54	-
911401552032	DN142B 20S/830 PSU-E UGR19	Not applicable
911401552132	DN142B 20S/830 PSU-E UGR19 IP54	Not applicable
911401552432	DN142B 20S/840 PSU-E UGR19	Not applicable
911401552532	DN142B 20S/840 PSU-E UGR19 IP54	Not applicable
910505103588	DN142B 10S/830 PSD-E UGR19	-
910505103589	DN142B 10S/830 PSD-E UGR19 IP54	-

CoreLine Downlight gen5

Order Code	Full Product Name	Maximum dim level
910505103592	DN142B 10S/840 PSD-E UGR19	-
910505103593	DN142B 10S/840 PSD-E UGR19 IP54	-
910505103604	DN142B 10S/830 PSD-E UGR19 ELB3	-
910505103606	DN142B 10S/840 PSD-E UGR19 ELB3	-
911401551232	DN142B 10S/830 PSU-E UGR19	Not applicable
911401551332	DN142B 10S/830 PSU-E UGR19 IP54	Not applicable
911401551632	DN142B 10S/840 PSU-E UGR19	Not applicable
911401551732	DN142B 10S/840 PSU-E UGR19 IP54	Not applicable
910505103594	DN142B 20S/830 PSD-E WR	-
910505103595	DN142B 20S/830 PSD-E WR IP54	-
910505103598	DN142B 20S/840 PSD-E WR	-

Order Code	Full Product Name	Maximum dim level
910505103599	DN142B 20S/840 PSD-E WR IP54	-
910505103607	DN142B 20S/830 PSD-E WR ELB3	-
910505103609	DN142B 20S/840 PSD-E WR ELB3	-
910505103611	DN142B 20S/830 WIA-E WR IP54	-
910505103613	DN142B 20S/840 WIA-E WR IP54	-
910505103615	DN142B 20S/830 WIA-E WR ELB3 IP54	-
910505103617	DN142B 20S/840 WIA-E WR ELB3 IP54	-
911401551832	DN142B 20S/830 PSU-E WR	Not applicable
911401551932	DN142B 20S/830 PSU-E WR IP54	Not applicable
911401552232	DN142B 20S/840 PSU-E WR	Not applicable
911401552332	DN142B 20S/840 PSU-E WR IP54	Not applicable

