



The essential lighting for the streets

EssentialForce

With a measured efficacy of up to 150 lm/W and good optical performance the EssentialForce family ensures an optimal value for money solution, while complying with local application standards for street lighting.

Benefits

- Die cast aluminium housing, Grey Munsel N6.5 painting.
- Two colour temperature options available (4000K and 5000K)
- For side entry applications (33–48 mm)
- Standard surge protection: 10kV/12kA.
- CISPR15 compliant dimmable driver.
- High transparency UV resistant polycarbonate (PC) lenses.
- Easy connection to tele management systems such as Interact City, with a standard 7-pin NEMA socket, allowing for remote lighting management.

Features

- Affordable solution for Road and Street lighting.
- Optimal measured efficacy (of up to 150 lm/W)
- Lightweight and compact for ease of installation
- EssentialForce achieves energy savings of up to 55% versus conventional lighting alternatives, with an additional savings potential when combined with control and tele management systems (Interact City).
- Long Lifetime: 50.000 hours (@L70B50) at 35 °C.

Application

- Traffic routes: streets and avenues.
- Central areas: parks and plazas, pedestrian crossings, bike paths, parking areas.
- Large open areas: industrial yards, parking lots.

Warnings and Safety

- Follow the mounting instructions provided by the manufacturer.

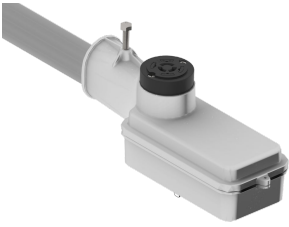
EssentialForce

Versions



EssentialForce

Product details



EssentialForce

Application Conditions

Ambient temperature range	-5 to +50 °C
---------------------------	--------------

Approval and Application

Mech. impact protection code	IK08
Ingress protection code	IP66
Surge Protection (Common/Differential)	Luminaire surge protection level until 10 kV differential mode and 10 kV common mode

Controls and Dimming

Dimmable	Yes
----------	-----

General Information

Luminaire light beam spread	-
Driver included	Yes
Lamp family code	LED-HP
Light source replaceable	Yes
Number of light sources	1 pc

Initial Performance (IEC Compliant)

Init. Color Rendering Index	>70
-----------------------------	-----

Light Technical

Standard tilt angle side entry	-
Standard tilt angle posttop	-

Mechanical and Housing

Color	Gray
Overall height	137 mm
Overall length	300 mm
Overall width	107 mm

Initial Performance (IEC Compliant)

Order Code	Full Product Name	Init. Corr. Color Temperature	Initial luminous flux	System Power
919306032931	BRP230 LED30 NW 18W DMLN P7 0-10 SRG12KA	4000 K	3000 lm	18 W
919306032941	BRP230 LED50 NW 31W DMLN P7 0-10 SRG12KA	4000 K	5000 lm	31 W
919306032951	BRP230 LED65 NW 42W DMLN P7 0-10 SRG12KA	4000 K	6500 lm	42 W
919306032961	BRP230 LED78 NW 52W DMLN P7 0-10 SRG12KA	4000 K	7800 lm	52 W
919306032971	BRP230 LED90 NW 65W DMLN P7 0-10 SRG12KA	4000 K	9000 lm	65 W
919306032981	BRP230 LED30 CW 18W DMLN P7 0-10 SRG12KA	5000 K	3000 lm	18 W
919306032991	BRP230 LED50 CW 31W DMLN P7 0-10 SRG12KA	5000 K	5000 lm	31 W
919306033001	BRP230 LED65 CW 42W DMLN P7 0-10 SRG12KA	5000 K	6500 lm	42 W
919306033011	BRP230 LED78 CW 52W DMLN P7 0-10 SRG12KA	5000 K	7800 lm	52 W
919306033021	BRP230 LED90 CW 65W DMLN P7 0-10 SRG12KA	5000 K	9000 lm	65 W

