

PrimaVision Mini (20W, 35W & 50W) for CDM – Miniature size to enhance creativity

PrimaVision Mini for CDM

Miniature HID electronic gear for PGJ5 CDM lamps – freeing up the boundaries of creativity and innovation in luminaire design

Benefits

- Miniaturization enables stylish luminaire design and retrofit halogen replacement
- Optimal lamp performance thanks to minimal lamp power tolerance
- Easy luminaire design-in

Features

- Loop Through feature (in independent version)
- Smallest gear and highest wattage in miniature size
- Minimal lamp power spread
- Microprocessor-controlled
- Lamp end-of-life detection
- High Tambient and Tcase temperatures
- Long lifetime of 40,000 hours

Application

- 20/35/50 W accent and decorative lighting for shops, public spaces, lobbies and offices
- Suitable for indoor use only

PrimaVision Mini for CDM

Versions

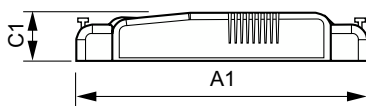
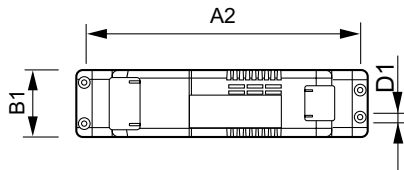
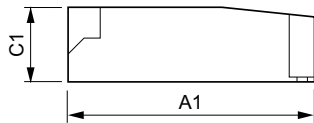
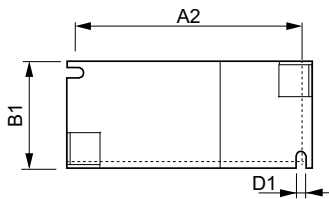
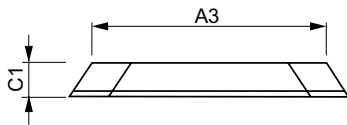
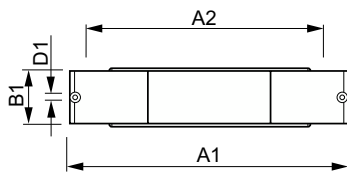


GPPR IPV5CDMM 0011



GPPR_IPV5CDMM_0016-Product photo

Dimensional drawing



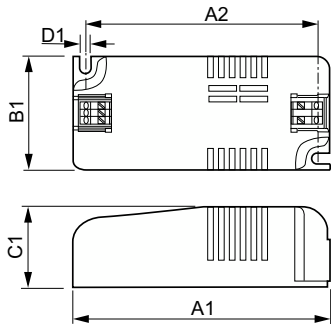
Product	D1	C1	A1	A2	A3	B1
HID-PV m 20 /I CDM 220-240V 50/60Hz	4.8 mm	34.0 mm	234.7 mm	225.1 mm	202.0 mm	49.4 mm
HID-PV m 35/I CDM 220-240V 50/60Hz	4.8 mm	34.0 mm	234.7 mm	225.1 mm	202.0 mm	49.4 mm

Product	D1	C1	A1	A2	B1
HID-PV m 20 /S CDM 220-240V 50/60Hz	4.2 mm	30.2 mm	97.3 mm	88.3 mm	43.3 mm
HID-PV m 35 /S CDM 220-240V 50/60Hz	4.2 mm	30.2 mm	97.3 mm	88.3 mm	43.3 mm
HID-PV m 50 /S CDM HPF 220-240V 50/60Hz	4.2 mm	30.2 mm	97.3 mm	88.3 mm	43.3 mm

Product	D1	C1	A1	A2	B1
HID-PV m PGJ5 20 /I CDM LPF 220-240V	4.2 mm	30.0 mm	190.0 mm	154.0 mm	43.3 mm

PrimaVision Mini for CDM

Dimensional drawing



Product	D1	C1	A1	A2	B1
HID-PV m PGJ5 20/S CDM HPF 220-240V	4.2 mm	30.0 mm	97.3 mm	88.3 mm	43.3 mm

Operating and Electrical

Input Frequency	50 to 60 Hz
Input Voltage	220 to 240 V
Line Frequency	50 to 60 Hz

Operating and Electrical

Order Code	Full Product Name	Number of Products on MCB (16A Type B) (Nom)
913700601666	HID-PV m PGJ5 20 /I CDM LPF 220-240V	48
913700646266	HID-PV m 20 /I CDM 220-240V 50/60Hz	24
913700653566	HID-PV m 35/I CDM 220-240V 50/60Hz	24
913700656766	HID-PV m PGJ5 20/S CDM HPF 220-240V	24

Order Code	Full Product Name	Number of Products on MCB (16A Type B) (Nom)
913700665966	HID-PV m 50 /S CDM HPF 220-240V 50/60Hz	24
913700696066	HID-PV m 20 /S CDM 220-240V 50/60Hz	32
913700696166	HID-PV m 35 /S CDM 220-240V 50/60Hz	24

Mechanical and Housing

Order Code	Full Product Name	Housing
913700601666	HID-PV m PGJ5 20 /I CDM LPF 220-240V	/I
913700646266	HID-PV m 20 /I CDM 220-240V 50/60Hz	Independent
913700653566	HID-PV m 35/I CDM 220-240V 50/60Hz	Independent
913700656766	HID-PV m PGJ5 20/S CDM HPF 220-240V	Standard

Order Code	Full Product Name	Housing
913700665966	HID-PV m 50 /S CDM HPF 220-240V 50/60Hz	/S
913700696066	HID-PV m 20 /S CDM 220-240V 50/60Hz	/S
913700696166	HID-PV m 35 /S CDM 220-240V 50/60Hz	/S

