



Philips TownTune Conical Comfort Bowl - Extending the home feel onto the street

TownTune CCB

Designed to enhance existing and scalable urban spaces, the Philips TownTune family offers all the latest lighting innovations in terms of performance, quality of light and connectivity. The family consists of four solutions: a Central Post Top (CPT), an Asymmetric Spigot Post Top / Side Entry version (ASY), a version with an extending Lyre post top bracket (Lyre), and a Central Post Top with a Conical Comfort Bowl (CCB). Each TownTune luminaire can be customized with a choice of different shapes on top of the housing, plus there's the option to add a decorative ring, which comes in two colors (excluding CCB). Design options that enable you to create your very own lighting signature and bring a distinctive identity to districts and cities. In addition, every luminaire in the TownTune family is uniquely identifiable, thanks to the Signify Service tag app. By simply scanning a QR code, placed inside the door of the mast or directly on the luminaire, you can instantly access the configuration of the luminaire. This makes maintenance and programming operations faster and easier and enables you to create your digital library of lighting assets and spare parts. TownTune also uses the Philips LEDGINE-O lighting platform, ensuring you always have the right amount and direction of light on your street. Furthermore, thanks to being system ready (SR), TownTune is also future proof. A solution that's ready to be paired with both standalone and advanced control and lighting software applications such as Interact City.

TownTune CCB

Benefits

- LEDGINE-O platform for great performance, choice color temperatures and light distributions
- Optimized Total Cost of Ownership (L-Tune for flux tuning, standalone controls e.g., LumiStep, Dynadimmer, CLO (Constant Light output), LineSwitch)
- Ready to pair with advanced systems and software applications e.g., Interact City
- Long lifetime: 100,000 hours @L85 and higher
- Easy access to gear, vandal resistant (IK10), high ingress protection (IP66)

Features

- Simple design for easy integration into urban spaces, wide range of accessories for customization
- Suitable for new and retrofit installations
- Range of lumen packages (1200 to 12000 lm) and CCTs (2200K, 2700K, 3000K, 4000K)
- Dedicated bowl for visual comfort and comfortable lighting experiences
- Service tag for easy installation and maintenance.

Application

- Urban and residential areas
- Cycle paths, footpaths, and pedestrian crossings
- City centers and squares
- Car parks

Versions

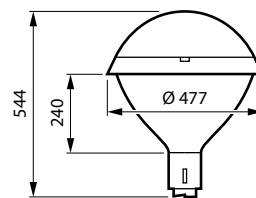
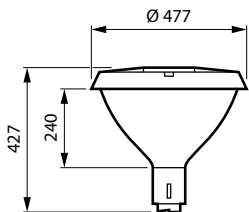
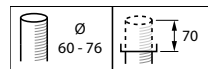
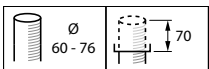


TownTune CCB, BDP277 with dome

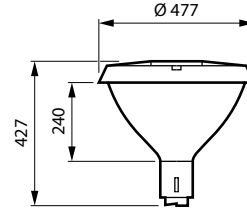
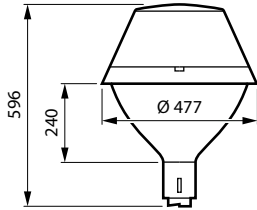
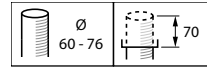
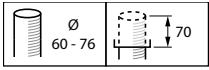


TownTune CCB, BDP278 with dome

Dimensional drawing



Dimensional drawing



General Information	
Driver included	Yes
Light source replaceable	Yes
Number of gear units	1 unit
Controls and Dimming	
Maximum dim level	10%
Mechanical and Housing	
Housing Color	Anthracite
Ingress protection code	IP66
Standard tilt angle side entry	-
Standard tilt angle posttop	0°
Approval and Application	
CE mark	Yes
Flammability mark	For mounting on normally flammable surfaces

General Information

Order Code	Full Product Name	Lamp family code	Service tag
912300060078	BDP276 LED20-4S-740 DX52 CLO-DDF1 62P	LED20	Yes
912300060079	BDP276 LED35-4S-730 II DS50 D9 76P	LED35	Yes
912300060080	BDP276 LED39-4S/740 II DW10 DDF1 SDM10 6	LED39	Yes
912300060132	BDP276 LED24-4S/730 DX52 DGR D9 62P	LED24	-
912300060081	BDP277 LED35-4S-730 II DW50 DGR D9 62P	LED35	Yes
912300060076	BDP275 LED14-4S-730 DX52 CLO SRT 62P	LED14	Yes
912300060077	BDP275 LED39-4S-727 II DM50 CLOD9 MSP62P	LED39	Yes
912300060131	BDP275 LED22-4S/730 DW50 DGR D9 62P	LED22	-
912300060252	BDP275 LED14-4S/730 PSD DM12 PCC DGR D9	LED14	-
912300060253	BDP275 LED14-4S/730 PSD DX52 PCC DGR D9	LED14	-
912300060254	BDP275 LED18-4S/730 PSD DX52 PCC DGR D9	LED18	-
912300060276	BDP275 LED14-4S/730 DM11 PCC DGR D9 62P	LED14	-
912300060290	BDP275 LED30-4S/830 PSD-SR II DS50 7035	LED30	-
912300060293	BDP275 LED20-4S/830 PSDD II DS50 7035 MS	LED20	-
912300060294	BDP275 LED30-4S/830 PSDD II DS50 7035 MS	LED30	-
912300060082	BDP278 LED35-4S-740- DM10 DGR D9 62P	LED35	Yes

Light Technical (1/2)

Order Code	Full Product Name	Luminaire light beam spread	Light source color	Correlated Color Temperature (Nom)	Color rendering index (CRI)
912300060078	BDP276 LED20-4S-740 DX52 CLO-DDF1 62P	-	740 neutral white	4000 K	70
912300060079	BDP276 LED35-4S-730 II DS50 D9 76P	152° x 155°	730 warm white	3000 K	70
912300060080	BDP276 LED39-4S/740 II DW10 DDF1 SDM10 6	7° - 52° x 150°	740 neutral white	4000 K	70

Order Code	Full Product Name	Luminaire light beam spread	Light source color	Correlated Color Temperature (Nom)	Color rendering index (CRI)
912300060132	BDP276 LED24-4S/730 DX52 DGR D9 62P	-	730 warm white	3000 K	70
912300060081	BDP277 LED35-4S-730 II DW50 DGR D9 62P	12° - 29° x 152°	730 warm white	3000 K	70
912300060076	BDP275 LED14-4S-730 DX52 CLO SRT 62P	-	730 warm white	3000 K	70

TownTune CCB

Order Code	Full Product Name	Luminaire light beam spread	Light source color	Correlated Color Temperature (Nom)	Color rendering index (CRI)
912300060077	BDP275 LED39-4S-727 II DM50 CLOD9 MSP62P	30° - 5° x 153°	727 warm white	2700 K	70
912300060131	BDP275 LED22-4S/730 DW50 DGR D9 62P	12° - 29° x 152°	730 warm white	3000 K	70
912300060252	BDP275 LED14-4S/730 PSD DM12 PCC DGR D9	88° x 157°	730 warm white	3000 K	70
912300060253	BDP275 LED14-4S/730 PSD DX52 PCC DGR D9	-	730 warm white	3000 K	70
912300060254	BDP275 LED18-4S/730 PSD DX52 PCC DGR D9	-	730 warm white	3000 K	70
912300060276	BDP275 LED14-4S/730 DM11 PCC DGR D9 62P	76° x 74°	730 warm white	3000 K	70

Order Code	Full Product Name	Luminaire light beam spread	Light source color	Correlated Color Temperature (Nom)	Color rendering index (CRI)
912300060290	BDP275 LED30-4S/830 PSD-SR II DS50 7035	152° x 155°	830 warm white	3000 K	80
912300060293	BDP275 LED20-4S/830 PSDD II DS50 7035 MS	152° x 155°	830 warm white	3000 K	80
912300060294	BDP275 LED30-4S/830 PSDD II DS50 7035 MS	152° x 155°	830 warm white	3000 K	80
912300060082	BDP278 LED35-4S-740- DM10 DGR D9 62P	77° - 11° x 156°	740 neutral white	4000 K	70

Light Technical (2/2)

Order Code	Full Product Name	Luminous Flux	Optic type outdoor	Upward light output ratio
912300060078	BDP276 LED20-4S-740 DX52 CLO-DDF1 62P	1,560 lm	Distribution Extra Wide DX52	0.035
912300060079	BDP276 LED35-4S-730 II DS50 D9 76P	2,730 lm	Distribution symmetrical 50	0.0337
912300060080	BDP276 LED39-4S/740 II DW10 DDF1 SDM10 6	3,120 lm	Distribution wide 10	0.0374
912300060132	BDP276 LED24-4S/730 DX52 DGR D9 62P	1,920 lm	Distribution Extra Wide DX52	0.035
912300060081	BDP277 LED35-4S-730 II DW50 DGR D9 62P	2,730 lm	Distribution wide 50	0.0313
912300060076	BDP275 LED14-4S-730 DX52 CLO SRT 62P	1,120 lm	Distribution Extra Wide DX52	0.035
912300060077	BDP275 LED39-4S-727 II DM50 CLOD9 MSP62P	2,926 lm	Distribution medium 50	0.0312
912300060131	BDP275 LED22-4S/730 DW50 DGR D9 62P	1,760 lm	Distribution wide 50	0.0313

Order Code	Full Product Name	Luminous Flux	Optic type outdoor	Upward light output ratio
912300060252	BDP275 LED14-4S/730 PSD DM12 PCC DGR D9	1,162 lm	Distribution medium 12	0.0358
912300060253	BDP275 LED14-4S/730 PSD DX52 PCC DGR D9	1,162 lm	Distribution Extra Wide DX52	0.035
912300060254	BDP275 LED18-4S/730 PSD DX52 PCC DGR D9	1,494 lm	Distribution Extra Wide DX52	0.035
912300060276	BDP275 LED14-4S/730 DM11 PCC DGR D9 62P	1,148 lm	Distribution medium 11	0.0369
912300060290	BDP275 LED30-4S/830 PSD-SR II DS50 7035	2,400 lm	Distribution symmetrical 50	0.0337
912300060293	BDP275 LED20-4S/830 PSDD II DS50 7035 MS	1,620 lm	Distribution symmetrical 50	0.0337
912300060294	BDP275 LED30-4S/830 PSDD II DS50 7035 MS	2,400 lm	Distribution symmetrical 50	0.0337
912300060082	BDP278 LED35-4S-740- DM10 DGR D9 62P	2,835 lm	Distribution medium 10	0.0374

Operating and Electrical

Order Code	Full Product Name	Power Consumption	Surge Protection (Common/Differential)
912300060078	BDP276 LED20-4S-740 DX52 CLO-DDF1 62P	12.6 W	Luminaire surge protection level until 6 kV differential mode and 6 kV common mode
912300060079	BDP276 LED35-4S-730 II DS50 D9 76P	24 W	Luminaire surge protection level until 6 kV differential mode and 6 kV common mode
912300060080	BDP276 LED39-4S/740 II DW10 DDF1 SDM10 6	24 W	Luminaire surge protection level until 6 kV differential mode and 10 kV common mode
912300060132	BDP276 LED24-4S/730 DX52 DGR D9 62P	16.2 W	Luminaire surge protection level until 6 kV differential mode and 6 kV common mode
912300060081	BDP277 LED35-4S-730 II DW50 DGR D9 62P	24 W	Luminaire surge protection level until 6 kV differential mode and 6 kV common mode
912300060076	BDP275 LED14-4S-730 DX52 CLO SRT 62P	9.7 W	Luminaire surge protection level until 6 kV differential mode and 6 kV common mode
912300060077	BDP275 LED39-4S-727 II DM50 CLOD9 MSP62P	27.5 W	Luminaire surge protection level until 6 kV differential mode and 6 kV common mode
912300060131	BDP275 LED22-4S/730 DW50 DGR D9 62P	14.8 W	Luminaire surge protection level until 6 kV differential mode and 6 kV common mode

Order Code	Full Product Name	Power Consumption	Surge Protection (Common/Differential)
912300060252	BDP275 LED14-4S/730 PSD DM12 PCC DGR D9	9.8 W	Luminaire surge protection level until 6 kV differential mode and 6 kV common mode
912300060253	BDP275 LED14-4S/730 PSD DX52 PCC DGR D9	9.8 W	Luminaire surge protection level until 6 kV differential mode and 6 kV common mode
912300060254	BDP275 LED18-4S/730 PSD DX52 PCC DGR D9	12.4 W	Luminaire surge protection level until 6 kV differential mode and 6 kV common mode
912300060276	BDP275 LED14-4S/730 DM11 PCC DGR D9 62P	9.8 W	Luminaire surge protection level until 6 kV differential mode and 6 kV common mode
912300060290	BDP275 LED30-4S/830 PSD-SR II DS50 7035	25 W	Luminaire surge protection level until 6 kV differential mode and 6 kV common mode
912300060293	BDP275 LED20-4S/830 PSDD II DS50 7035 MS	16.2 W	Luminaire surge protection level until 6 kV differential mode and 6 kV common mode
912300060294	BDP275 LED30-4S/830 PSDD II DS50 7035 MS	25 W	Luminaire surge protection level until 6 kV differential mode and 6 kV common mode
912300060082	BDP278 LED35-4S-740- DM10 DGR D9 62P	22.5 W	Luminaire surge protection level until 6 kV differential mode and 6 kV common mode

Controls and Dimming

Order Code	Full Product Name	Dimmable
912300060078	BDP276 LED20-4S-740 DX52 CLO-DDF1 62P	Yes
912300060079	BDP276 LED35-4S-730 II DS50 D9 76P	No
912300060080	BDP276 LED39-4S/740 II DW10 DDF1 SDM10 6	Yes
912300060132	BDP276 LED24-4S/730 DX52 DGR D9 62P	No
912300060081	BDP277 LED35-4S-730 II DW50 DGR D9 62P	No
912300060076	BDP275 LED14-4S-730 DX52 CLO SRT 62P	Yes
912300060077	BDP275 LED39-4S-727 II DM50 CLOD9 MSP62P	Yes
912300060131	BDP275 LED22-4S/730 DW50 DGR D9 62P	No

Order Code	Full Product Name	Dimmable
912300060252	BDP275 LED14-4S/730 PSD DM12 PCC DGR D9	Yes
912300060253	BDP275 LED14-4S/730 PSD DX52 PCC DGR D9	Yes
912300060254	BDP275 LED18-4S/730 PSD DX52 PCC DGR D9	Yes
912300060276	BDP275 LED14-4S/730 DM11 PCC DGR D9 62P	Yes
912300060290	BDP275 LED30-4S/830 PSD-SR II DS50 7035	Yes
912300060293	BDP275 LED20-4S/830 PSDD II DS50 7035 MS	Yes
912300060294	BDP275 LED30-4S/830 PSDD II DS50 7035 MS	Yes
912300060082	BDP278 LED35-4S-740- DM10 DGR D9 62P	No

Mechanical and Housing

Order Code	Full Product Name	Optical cover type	Mech. impact protection code
912300060078	BDP276 LED20-4S-740 DX52 CLO-DDF1 62P	Polycarbonate bowl/cover structured	IK10
912300060079	BDP276 LED35-4S-730 II DS50 D9 76P	Polycarbonate bowl/cover structured	IK10
912300060080	BDP276 LED39-4S/740 II DW10 DDF1 SDM10 6	Polycarbonate bowl/cover structured	IK10
912300060132	BDP276 LED24-4S/730 DX52 DGR D9 62P	Polycarbonate bowl/cover structured	IK10
912300060081	BDP277 LED35-4S-730 II DW50 DGR D9 62P	Polycarbonate bowl/cover structured	IK10
912300060076	BDP275 LED14-4S-730 DX52 CLO SRT 62P	Polycarbonate bowl/cover structured	IK09
912300060077	BDP275 LED39-4S-727 II DM50 CLOD9 MSP62P	Polycarbonate bowl/cover structured	IK10
912300060131	BDP275 LED22-4S/730 DW50 DGR D9 62P	Polycarbonate bowl/cover structured	IK10

Order Code	Full Product Name	Optical cover type	Mech. impact protection code
912300060252	BDP275 LED14-4S/730 PSD DM12 PCC DGR D9	Polycarbonate bowl/cover structured	IK10
912300060253	BDP275 LED14-4S/730 PSD DX52 PCC DGR D9	Polycarbonate bowl/cover structured	IK10
912300060254	BDP275 LED18-4S/730 PSD DX52 PCC DGR D9	Polycarbonate bowl/cover structured	IK10
912300060276	BDP275 LED14-4S/730 DM11 PCC DGR D9 62P	Polycarbonate bowl/cover clear	IK10
912300060290	BDP275 LED30-4S/830 PSD-SR II DS50 7035	Polycarbonate bowl/cover clear	IK10
912300060293	BDP275 LED20-4S/830 PSDD II DS50 7035 MS	Polycarbonate bowl/cover clear	IK10
912300060294	BDP275 LED30-4S/830 PSDD II DS50 7035 MS	Polycarbonate bowl/cover clear	IK10
912300060082	BDP278 LED35-4S-740- DM10 DGR D9 62P	Polycarbonate bowl/cover structured	IK10

Product Data

Order Code	Full Product Name	Product family code
912300060078	BDP276 LED20-4S-740 DX52 CLO-DDF1 62P	BDP276
912300060079	BDP276 LED35-4S-730 II DS50 D9 76P	BDP276
912300060080	BDP276 LED39-4S/740 II DW10 DDF1 SDM10 6	BDP276
912300060132	BDP276 LED24-4S/730 DX52 DGR D9 62P	BDP276
912300060081	BDP277 LED35-4S-730 II DW50 DGR D9 62P	BDP277
912300060076	BDP275 LED14-4S-730 DX52 CLO SRT 62P	BDP275
912300060077	BDP275 LED39-4S-727 II DM50 CLOD9 MSP62P	BDP275
912300060131	BDP275 LED22-4S/730 DW50 DGR D9 62P	BDP275

Order Code	Full Product Name	Product family code
912300060252	BDP275 LED14-4S/730 PSD DM12 PCC DGR D9	BDP275
912300060253	BDP275 LED14-4S/730 PSD DX52 PCC DGR D9	BDP275
912300060254	BDP275 LED18-4S/730 PSD DX52 PCC DGR D9	BDP275
912300060276	BDP275 LED14-4S/730 DM11 PCC DGR D9 62P	BDP275
912300060290	BDP275 LED30-4S/830 PSD-SR II DS50 7035	BDP275
912300060293	BDP275 LED20-4S/830 PSDD II DS50 7035 MS	BDP275
912300060294	BDP275 LED30-4S/830 PSDD II DS50 7035 MS	BDP275
912300060082	BDP278 LED35-4S-740- DM10 DGR D9 62P	BDP278

