



MASTER LEDtube EM/ Mains T8

MAS LEDtube 1050mm 14W865 T8 TW

The Philips MASTER LEDtube integrates a LED light source into a traditional fluorescent form factor. Its unique design creates a perfectly uniform visual appearance, which cannot be distinguished from traditional fluorescent. These T8 LED tubes are the right choice for absolute performance and are designed to stand up to everyday conditions. Unparalleled savings thanks to low energy consumption and an exceptionally long lifetime ensure this tube masters every demanding application.

Warnings and Safety

- NOTE: The overall energy efficiency and light distribution of any installation that uses these lamps will be determined by the design of the installation.

Product data

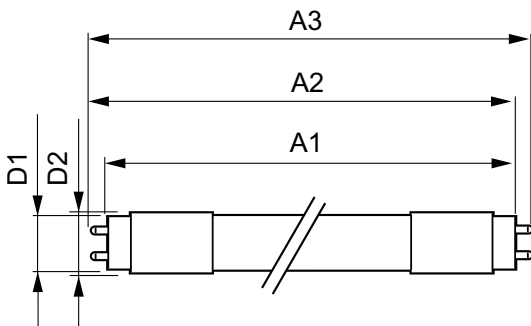
General Information		LLMF At End Of Nominal Lifetime (Nom)	
Cap-Base	G13 [Medium Bi-Pin Fluorescent]		70 %
Nominal lifetime	50,000 hour(s)	Color rendering index (CRI)	80
Switching Cycle	200,000	Operating and Electrical	
Lighting Technology	LED	Input Frequency	50 to 60 Hz
Light Technical		Power Consumption	14 W
Color Code	865 [CCT of 6500K]	Lamp Current (Max)	150 mA
Beam Angle (Nom)	160 degree(s)	Lamp Current (Min)	55 mA
Luminous Flux	2,300 lm	Wattage Equivalent	38 W
Color Designation	Cool Daylight	Starting Time (Nom)	0.5 s
Correlated Color Temperature (Nom)	6500 K	Warm-up time to 60% light	0.5 s
Luminous Efficacy (rated) (Nom)	164 lm/W	Power Factor (Fraction)	0.9
Color Consistency	<6	Voltage (Nom)	100-277 V

MASTER LEDtube EM/Mains T8

Temperature	
T-Case Maximum (Nom)	52 °C
Controls and Dimming	
Dimmable	No
Mechanical and Housing	
Bulb Finish	Frosted
Bulb Material	Plastic
Product Length	1,100 mm
Bulb Shape	T8
Approval and Application	
Energy Saving Product	Yes
Approval Marks	RoHS compliance
EU RoHS compliant	Yes

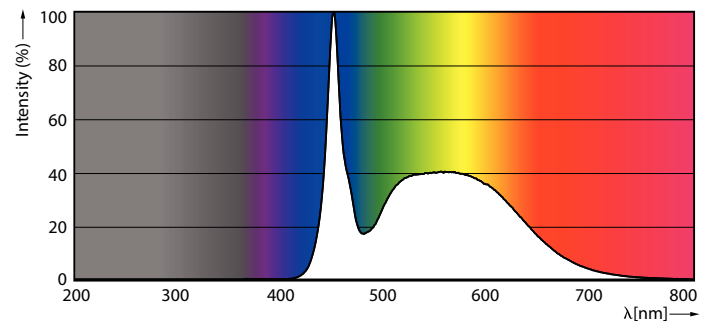
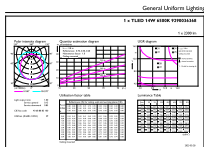
Ambient temperature range	-20 to +45 °C
Product Data	
Order product name	MAS LEDtube 1050mm 14W865 T8 TW
Full product name	MAS LEDtube 1050mm 14W865 T8 TW
Full product code	872016919473100
Order code	929003636808
Material Nr. (12NC)	929003636808
Numerator - Quantity Per Pack	1
Net Weight (Piece)	0.176 kg
EAN/UPC - Product/Case	8720169194731
Numerator - Packs per outer box	20
EAN/UPC - Case	8720169194748

Dimensional drawing



Product	D1	D2	A1	A2	A3
MAS LEDtube 1050mm 14W865 T8 TW	25.6 mm	28 mm	1,046 mm	1,053 mm	1,060 mm

Photometric data

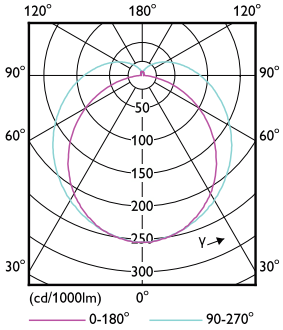


General uniform lighting - MAS LEDtube 1050mm 14W865 T8 TW

Spectral Power Distribution Colour - MAS LEDtube 1050mm 14W865 T8 TW

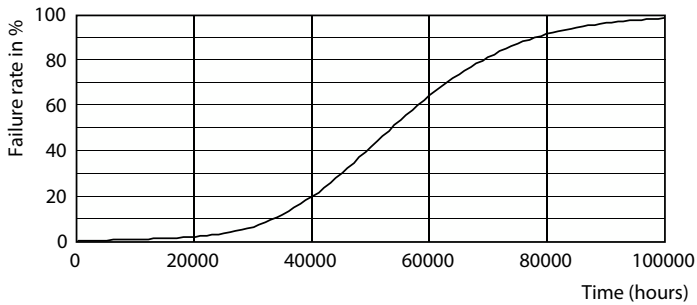
MASTER LEDtube EM/Mains T8

Photometric data

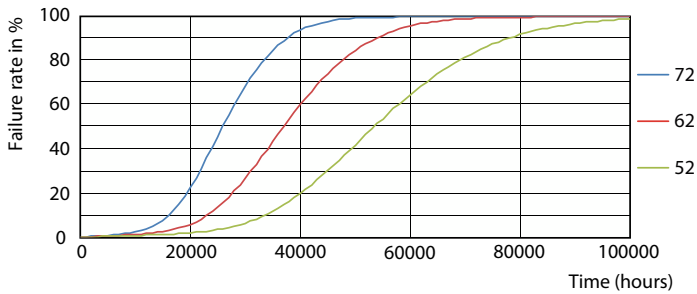


Light Distribution Diagram - MAS LEDtube 1050mm 14W865 T8 TW

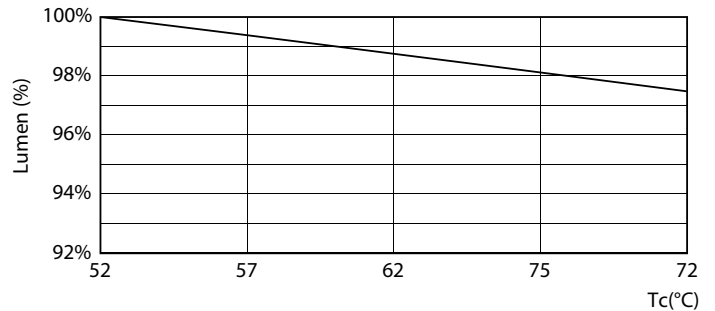
Lifetime



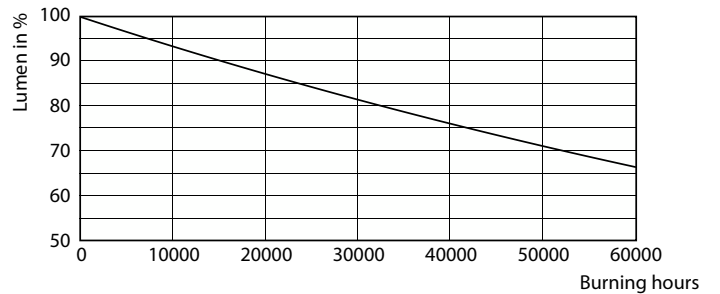
Life Expectancy Diagram



FailureRate



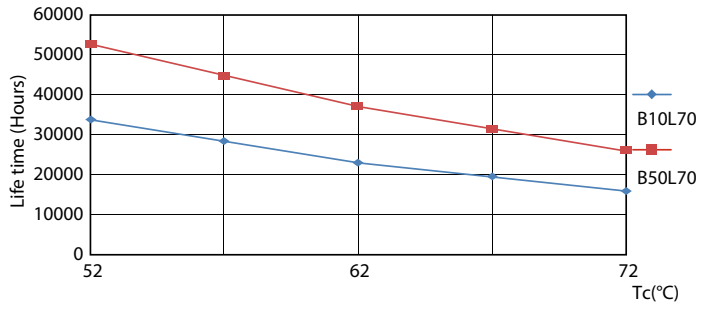
Lumen Maintenance Diagram - MAS LEDtube 1050mm 14W865 T8 TW



Lumen Maintenance Diagram - MAS LEDtube 1050mm 14W865 T8 TW

MASTER LEDtube EM/Mains T8

Lifetime



LifetimeVsTc

