



Contractor-grade MainsFit (UL Type-B) T8

14.5T8/CNG/48-840/MF18/G 25/1

The Contractor-grade MainsFit (UL Type B) lamps are designed to provide simple retrofit solution to move from traditional fluorescent lamps to energy saving LEDs. This ballast bypass lamp is similar to other UL Type B lamps in the Philips family by providing proven energy savings, long life (50k hours), surge suppression and industry leading safety features. All lamps in the Contractor-grade family are also double-ended to help simplify the installation.

Product data

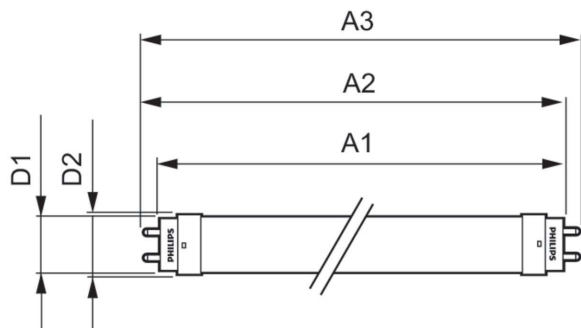
| General Information | | LLMF At End Of Nominal Lifetime (Nom) 70 % | |
|------------------------------------|---------------------------------|--|-------------|
| Cap-Base | G13 [Medium Bi-Pin Fluorescent] | | |
| Nominal lifetime | 50,000 hour(s) | | |
| Switching Cycle | 50,000 | | |
| Lighting Technology | LED | | |
| Light Technical | | Operating and Electrical | |
| Color Code | 840 [CCT of 4000K] | Line Frequency | 50 to 60 Hz |
| Beam Angle (Nom) | 240 degree(s) | Input Frequency | 50 to 60 Hz |
| Luminous Flux | 1,800 lm | Power Consumption | 14.5 W |
| Color Designation | Cool White (CW) | Lamp Current (Max) | 125 mA |
| Correlated Color Temperature (Nom) | 4000 K | Lamp Current (Min) | 58 mA |
| Luminous Efficacy (rated) (Nom) | 124.00 lm/W | Wattage Equivalent | 32 W |
| Color Consistency | <6 | Starting Time (Nom) | 0.5 s |
| Color rendering index (CRI) | 80 | Warm-up time to 60% light | 0.5 s |
| | | Power Factor (Fraction) | 0.9 |
| | | Voltage (Nom) | 120-277 V |
| | | UL Type | UL Type B |

Contractor-grade MainsFit (UL Type-B) T8

| Temperature | |
|--------------------------|---|
| T-Case Maximum (Nom) | 70 °C |
| Controls and Dimming | |
| Dimmable | Limited |
| Mechanical and Housing | |
| Bulb Finish | Frosted |
| Bulb Material | Glass |
| Product Length | 1,200 mm |
| Bulb Shape | T8 |
| Net Weight (Piece) | 0.190 kg |
| Approval and Application | |
| Energy Saving Product | Yes |
| Approval Marks | RoHS compliance UL certificate DLC compliance |

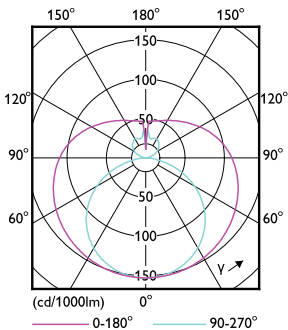
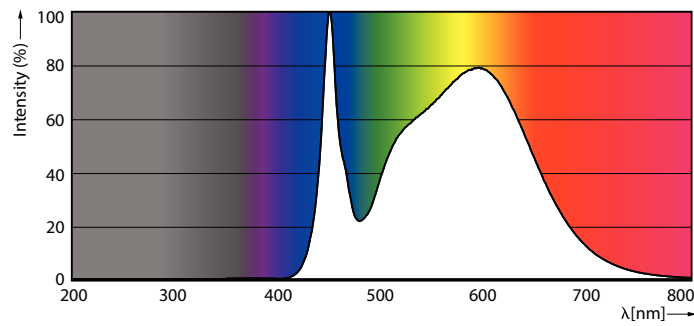
| EU RoHS compliant | Yes |
|-------------------------------------|-------------------------------|
| Ambient temperature range | -20 °C to 45 °C |
| Application Conditions | |
| can it be used in closed luminaires | Yes |
| Product Data | |
| Order product name | 14.5T8/CNG/48-840/MF18/G 25/1 |
| Full product name | 14.5T8/CNG/48-840/MF18/G 25/1 |
| Order code | 929003474604 |
| Material Nr. (12NC) | 929003474604 |
| Numerator - Quantity Per Pack | 1 |
| EAN/UPC - Product/Case | 046677577773 |
| Numerator - Packs per outer box | 25 |
| EAN/UPC - Case | 50046677577778 |

Dimensional drawing



| Product | D1 | D2 | A1 | A2 | A3 |
|-------------------------------|---------|-------|------------|------------|------------|
| 14.5T8/CNG/48-840/MF18/G 25/1 | 25.7 mm | 28 mm | 1,198.2 mm | 1,205.3 mm | 1,212.4 mm |

Photometric data

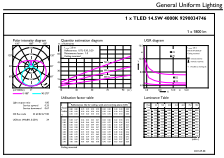


Spectral Power Distribution Colour - 14.5T8/CNG/48-840/MF18/G 25/1

Light Distribution Diagram - 14.5T8/CNG/48-840/MF18/G 25/1

Contractor-grade MainsFit (UL Type-B) T8

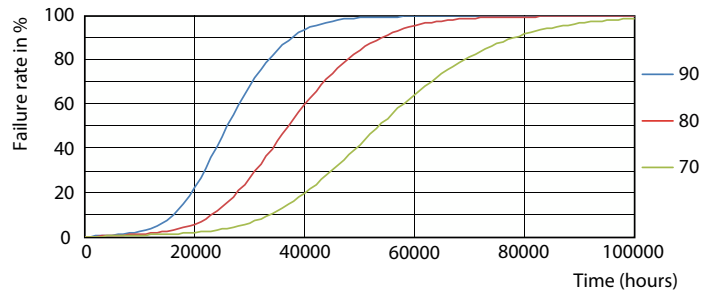
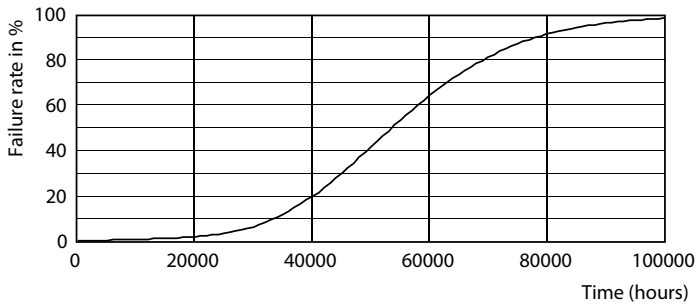
Photometric data



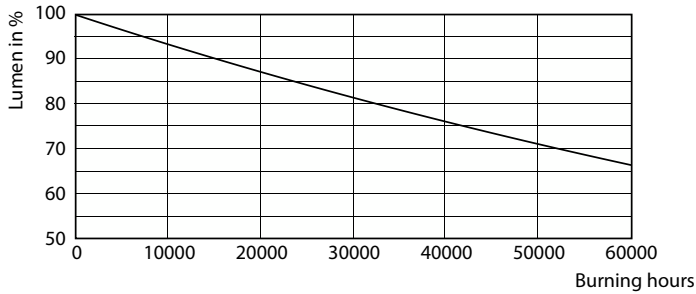
© 2024 Philips Lighting B.V. Page 11 of 11

General uniform lighting - 14.5T8/CNG/48-840/MF18/G 25/1

Lifetime

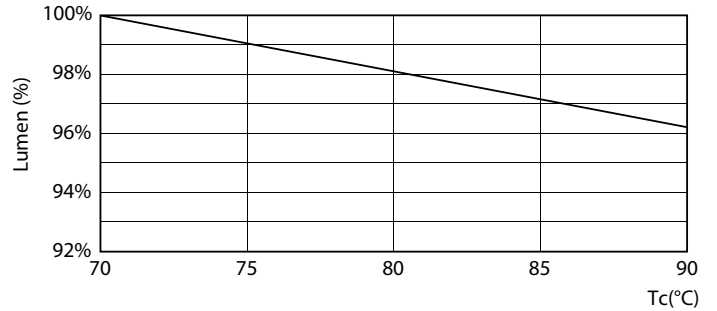


Life Expectancy Diagram



Lumen Maintenance Diagram - 14.5T8/CNG/48-840/MF18/G 25/1

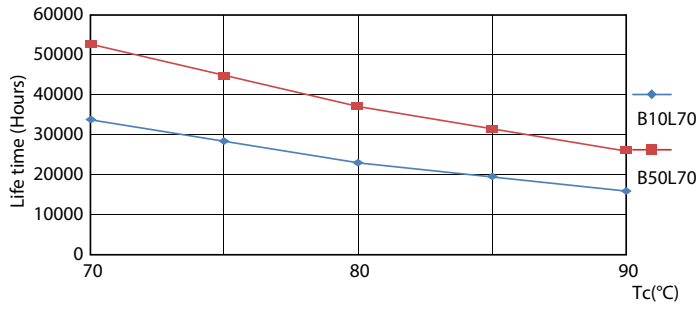
LEDtube 50K 7090 FailureRate-LED



Lumen Maintenance Diagram - 14.5T8/CNG/48-840/MF18/G 25/1

Contractor-grade MainsFit (UL Type-B) T8

Lifetime



LifetimeVsTc

