



MASTER LEDtube EM/ Mains T8

MAS LEDtube 1200mm 15.5W840 T8 TW

The Philips MASTER LEDtube integrates a LED light source into a traditional fluorescent form factor. Its unique design creates a perfectly uniform visual appearance, which cannot be distinguished from traditional fluorescent. These T8 LED tubes are the right choice for absolute performance and are designed to stand up to everyday conditions. Unparalleled savings thanks to low energy consumption and an exceptionally long lifetime ensure this tube masters every demanding application.

Warnings and Safety

- NOTE: The overall energy efficiency and light distribution of any installation that uses these lamps will be determined by the design of the installation.

Product data

General Information	
Cap-Base	G13 [Medium Bi-Pin Fluorescent]
Nominal lifetime	50,000 hour(s)
Switching Cycle	200,000
Lighting Technology	LED
EU RoHS compliant	Yes

Light Technical	
Color Code	840 [CCT of 4000K]
Beam Angle (Nom)	160 degree(s)
Luminous Flux	2,500 lm
Color Designation	Cool White (CW)
Correlated Color Temperature (Nom)	4000 K
Luminous Efficacy (rated) (Nom)	161 lm/W

Color Consistency	<6
Color rendering index (CRI)	80
LLMF At End Of Nominal Lifetime (Nom)	70 %

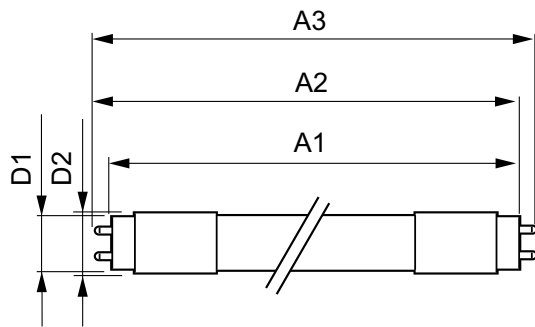
Operating and Electrical	
Line Frequency	50 to 60 Hz
Input Frequency	50 to 60 Hz
Power Consumption	15.5 W
Lamp Current (Max)	155 mA
Lamp Current (Min)	65 mA
Starting Time (Nom)	0.9 s
Warm-up time to 60% light	0.9 s
Power Factor (Fraction)	0.9

MASTER LEDtube EM/Mains T8

Voltage (Nom)	110-277 V
Temperature	
Ambient temperature range	-20 °C to 45 °C
T-Case Maximum (Nom)	65 °C
Controls and Dimming	
Dimmable	No
Mechanical and Housing	
Bulb Finish	Frosted
Bulb Material	Plastic
Product Length	1,200 mm
Bulb Shape	T8
Approval and Application	
Energy Saving Product	Yes

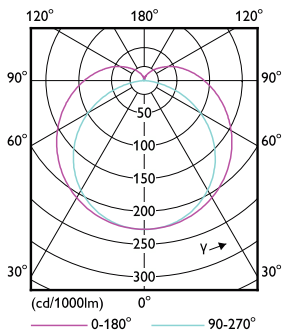
Approval Marks	RoHS compliance
Product Data	
Order product name	MAS LEDtube 1200mm 15.5W840 T8 TW
Full product name	MAS LEDtube 1200mm 15.5W840 T8 TW
Full product code	871951439957000
Order code	929003103008
Material Nr. (12NC)	929003103008
Numerator - Quantity Per Pack	1
EAN/UPC - Product/Case	8719514399570
Numerator - Packs per outer box	20
EAN/UPC - Case	8719514399587

Dimensional drawing

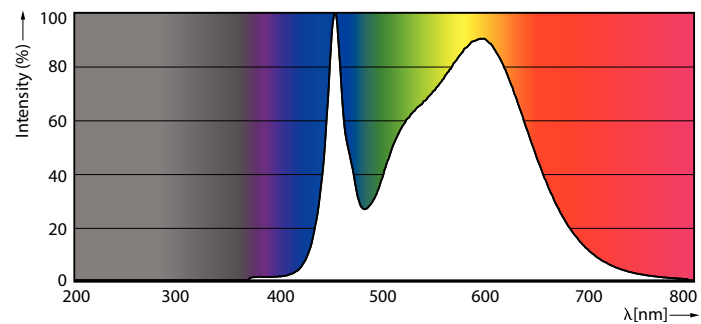


Product	D1	D2	A1	A2	A3
MAS LEDtube 1200mm 15.5W840 T8 TW	25.6 mm	27.9 mm	1,199 mm	1,205 mm	1,213 mm

Photometric data



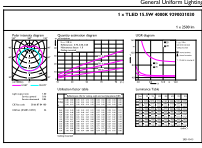
Light Distribution Diagram - MAS LEDtube 1200mm 15.5W840 T8 TW



Spectral Power Distribution Colour - MAS LEDtube 1200mm 15.5W840 T8 TW

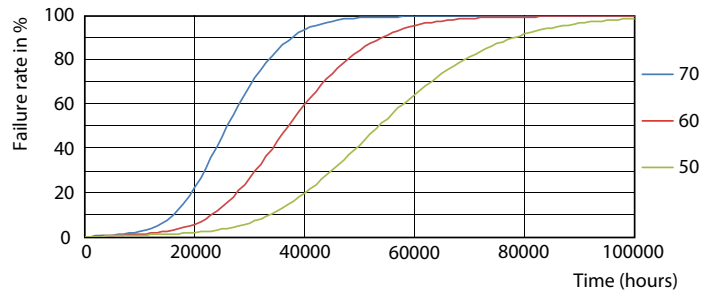
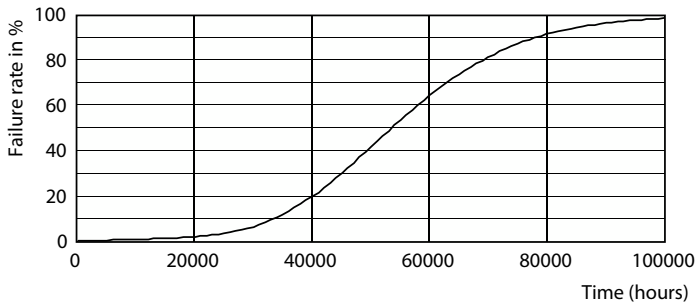
MASTER LEDtube EM/Mains T8

Photometric data

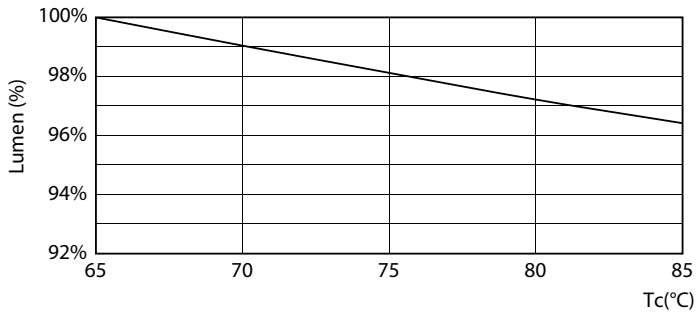


General uniform lighting - MAS LEDtube 1200mm 15.5W840 T8 TW

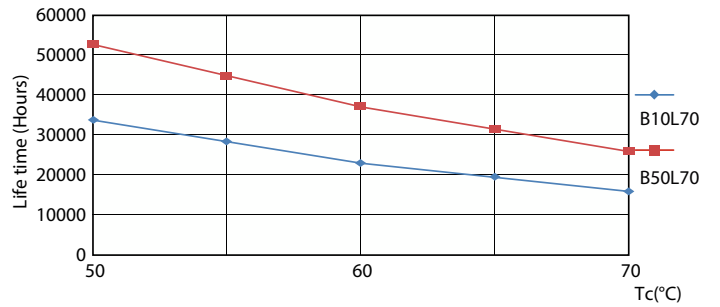
Lifetime



Life Expectancy Diagram - MAS LEDtube 1200mm 15.5W840 T8 TW



Life Expectancy Diagram - MAS LEDtube 1200mm 15.5W840 T8 TW

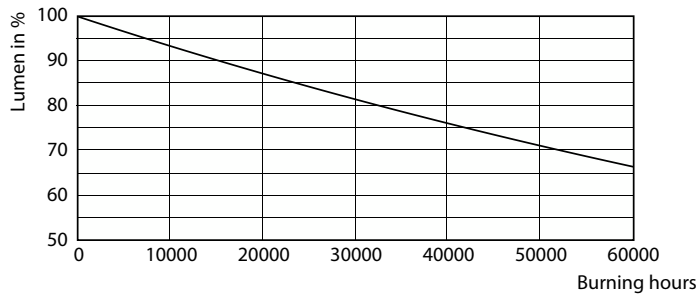


Lumen Maintenance Diagram - MAS LEDtube 1200mm 15.5W840 T8 TW

Life Expectancy Diagram - MAS LEDtube 1200mm 15.5W840 T8 TW

MASTER LEDtube EM/Mains T8

Lifetime



Lumen Maintenance Diagram - MAS LEDtube 1200mm 15.5W840 T8 TW

