



MASTER Value LEDtube Universal T8



MAS LEDtube VLE UN 1500mm UO 23W830 T8

The new Philips MASTER Value LEDtube Universal T8 brings ease and simplicity to your lighting project. That's because you do not need to match the driver technology anymore: a unique design enables the Philips MASTER Value LEDtube Universal T8 to directly fit in luminaires operating on either electromagnetic ballasts or HF electronic ballasts or mains power connection. It is so simple to operate and you no longer need to stock two types of tubes! Perfectly safe, reliable & easy to install Philips MASTER Value LEDtube Universal T8 is the ideal alternative to standard fluorescent tubes to maximize value over lifetime with high energy saving and lower maintenance costs.

Product data

| General Information | | LLMF At End Of Nominal Lifetime (Nom) | | 70 % |
|------------------------------------|---------------------------------|--|-------------|------|
| Cap-Base | G13 [Medium Bi-Pin Fluorescent] | Photobiological safety according to EN 62471 | | RG0 |
| Nominal lifetime | 60,000 hour(s) | Operating and Electrical | | |
| Switching Cycle | 50,000 | Line Frequency | 50 to 60 Hz | |
| Lighting Technology | LED | Input Frequency | 50 to 60 Hz | |
| Flux measurement reference | Sphere | Power Consumption | 23 W | |
| Light Technical | | Lamp Current (Nom) | 106 mA | |
| Color Code | 830 [CCT of 3000K] | Starting Time (Nom) | 0.5 s | |
| Beam Angle (Nom) | 190 degree(s) | Warm-up time to 60% light | 0.5 s | |
| Luminous Flux | 3,400 lm | Power Factor (Fraction) | 0.9 | |
| Color Designation | White (WH) | Voltage (Nom) | 220-240 V | |
| Correlated Color Temperature (Nom) | 3000 K | Ballast Compatibility | Universal | |
| Luminous Efficacy (rated) (Nom) | 147 lm/W | LED alternative to fluorescent lamp power | 58 W | |
| Color Consistency | <6 | Inrush current at mains | 10 | |
| Color rendering index (CRI) | 80 | Max. lamp no. on MCB B type 10A - Mains | 73 | |

MASTER Value LEDtube Universal T8

| | |
|--|-----|
| Max. lamp no. on MCB B type 10A – EM ballast without Compensation Capacitor. | 73 |
| Max. lamp no. on MCB B type 10A – EM ballast with Compensation Capacitor. | 15 |
| Max. lamp no. on MCB B type 16A – Mains | 116 |
| Max. lamp no. on MCB B type 16A – EM ballast without Compensation Capacitor. | 116 |
| Max. lamp no. on MCB B type 16A – EM ballast with Compensation Capacitor. | 25 |

Temperature

| | |
|----------------------|-------|
| T-Case Maximum (Nom) | 55 °C |
|----------------------|-------|

Controls and Dimming

| | |
|----------|----|
| Dimmable | No |
|----------|----|

Mechanical and Housing

| | |
|--------------------|----------|
| Bulb Finish | Frosted |
| Bulb Material | Glass |
| Product Length | 1,500 mm |
| Bulb Shape | T8 |
| Net Weight (Piece) | 0.270 kg |

Approval and Application

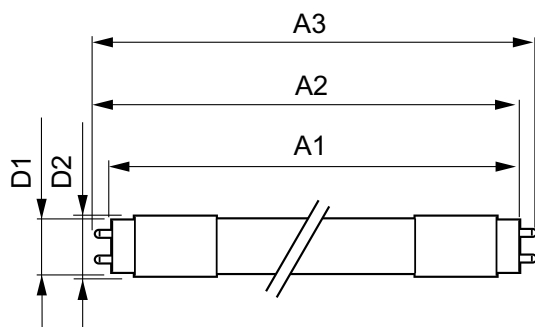
| | |
|-------------------------|---|
| Energy Efficiency Class | D |
|-------------------------|---|

| | |
|---|-----------------|
| Energy Saving Product | Yes |
| Approval Marks | RoHS compliance |
| Energy Consumption kWh/1000 h | 23 kWh |
| EPREL Registration Number | 1195916 |
| CE mark | Yes |
| EU RoHS compliant | Yes |
| Flickering value (PstLM) – Flickering value as per EN 61000-3-3 | 1 |
| Stroboscopic effect visibility measure (SVM) | 0.4 |
| Ambient temperature range | -20 to +45 °C |

Product Data

| | |
|---------------------------------|--|
| Order product name | MAS LEDtube VLE UN 1500mm UO 23W830 T8 |
| Full product name | MAS LEDtube VLE UN 1500mm UO 23W830 T8 |
| Full product code | 871951431674400 |
| Order code | 929002997302 |
| Material Nr. (12NC) | 929002997302 |
| Numerator - Quantity Per Pack | 1 |
| EAN/UPC - Product/Case | 8719514316744 |
| Numerator - Packs per outer box | 10 |
| EAN/UPC - Case | 8719514316751 |

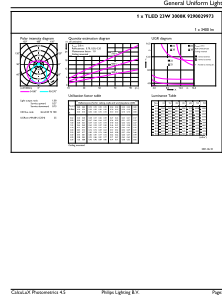
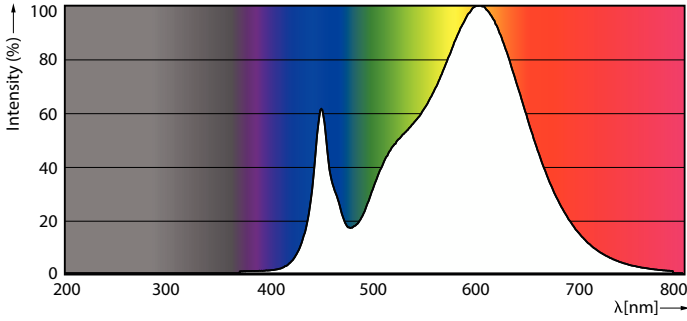
Dimensional drawing



| Product | D1 | D2 | A1 | A2 | A3 |
|--|-------|-------|----------|----------|----------|
| MAS LEDtube VLE UN 1500mm UO 23W830 T8 | 26 mm | 28 mm | 1,500 mm | 1,506 mm | 1,514 mm |

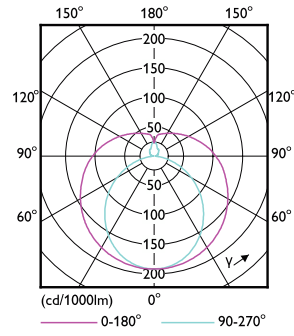
MASTER Value LEDtube Universal T8

Photometric data



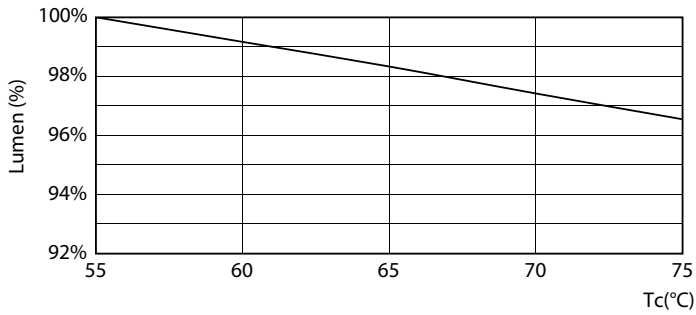
Spectral Power Distribution Colour - MAS LEDtube VLE UN 1500mm UO 23W830 T8

General uniform lighting - MAS LEDtube VLE UN 1500mm UO 23W830 T8

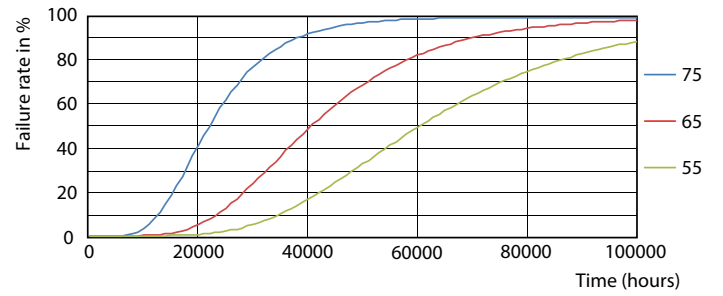


Light Distribution Diagram - MAS LEDtube VLE UN 1500mm UO 23W830 T8

Lifetime



Lumen Maintenance Diagram - MAS LEDtube VLE UN 1500mm UO 23W830 T8



FailureRate

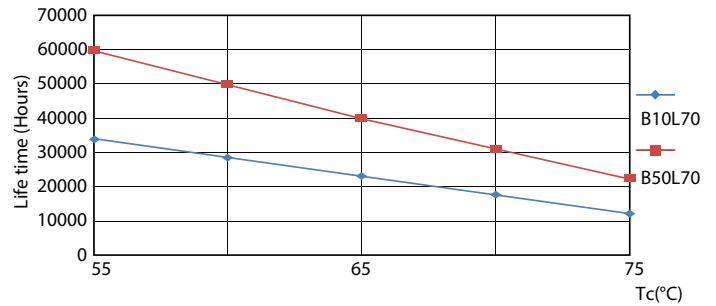
MASTER Value LEDtube Universal T8

Lifetime



Lumen Maintenance Diagram - MAS LEDtube VLE UN 1500mm UO 23W830 T8

Life Expectancy Diagram



LifetimeVsTc

