



SmartBright LED Downlight

DN029B G2 LED8/865 PSR-E D90 GM

SmartBright LED Downlight, 7.5 W, 800 lm, 6500 K, Beam angle 100°, White

When switching from conventional CFL to LED lighting, most customers want a green solution with an attractive total cost of ownership. SmartBright LED Downlight is characterized by low cost and high efficiency, providing the end-user with the perfect green light fixture.

Product data

General Information	
Light source replaceable	No
Number of gear units	1 unit
Driver included	Yes
Lighting Technology	LED

Light Technical	
Luminous Flux	800 lm
Luminous Efficacy (rated) (Nom)	106 lm/W
Correlated Color Temperature (Nom)	6500 K
Color rendering index (CRI)	80
Light source color	865 cool daylight
Optic type	Beam angle 100°
Luminaire light beam spread	100°

Operating and Electrical	
Input Voltage	220 to 240 V

Line Frequency	50 or 60 Hz
Input Frequency	50 or 60 Hz
Inrush current	0.8 A
Inrush time	0.12 ms
Power Consumption	7.5 W
Power Factor (Fraction)	0.5
Connection	Flying leads/wires
Cable	Cable without plug
Number of products on MCB of 16 A type B 490	

Temperature	
Ambient temperature range	-20 to +40 °C

Controls and Dimming	
Dimmable	Yes
Constant light output	No

SmartBright LED Downlight

Mechanical and Housing

Housing Material	Metal-Plastic
Reflector material	-
Optic material	Polycarbonate
Optical cover material	Polycarbonate
Fixation material	Stainless steel
Housing Color	White
Optical cover finish	Frosted
Overall height	56 mm
Overall diameter	114 mm

Approval and Application

Ingress protection code	IP40/54 [Finger-protected; dust accumulation-protected, splash-proof]
Mech. impact protection code	IK03 [0.3 J]
Protection class IEC	Safety class II
Glow-wire test	Temperature 750 °C, duration 5 s
Flammability mark	For mounting on normally flammable surfaces
Warranty period	1 years
EU RoHS compliant	Yes

Initial Performance (IEC Compliant)

Luminous flux tolerance	-10% / +20%
-------------------------	-------------

Initial chromaticity	(6500K@, 0.3130, 0.3370) 6
Power consumption tolerance	+/-10%

Over Time Performance (IEC Compliant)

Driver failure rate at 5000 h	1.6 %
Median useful life L70B50	20,000 hour(s)

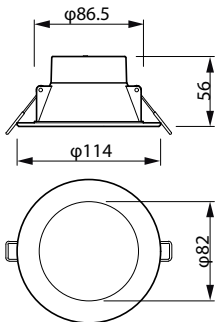
Application Conditions

Maximum dim level	10% (depends on dimmer, ELV)
Suitable for random switching	Not applicable

Product Data

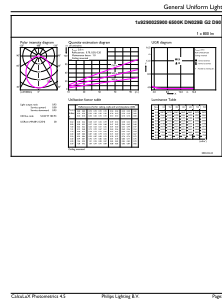
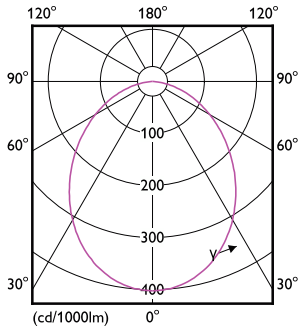
Order product name	DN029B G2 LED8/865 PSR-E D90 GM
Full product name	DN029B G2 LED8/865 PSR-E D90 GM
Full product code	87195142767200
Order code	9290025900008
Material Nr. (12NC)	9290025900008
Numerator - Quantity Per Pack	1
Net Weight (Piece)	0.230 kg
EAN/UPC - Product/Case	8719514276772
Numerator - Packs per outer box	12
EAN/UPC - Case	8719514276789

Dimensional drawing



SmartBright LED Downlight

Photometric data



Light Distribution Diagram - DN029B G2 LED8/865 PSR-E D90 GM

General uniform lighting - DN029B G2 LED8/865 PSR-E D90 GM

