



PL-C/T

5PL-C/LED/13H/840/IF5/P/2P 20/1

Philips PLED 4-pin & 2-pin lamps are an affordable LED solution to replace compact fluorescent lamps. The product provides a natural lighting effect for use in many lighting applications, and provides instant energy savings, making them an environmentally-friendly solution. Available as replacements for 13W, 26W and 32W compact fluorescent lamps.

Product data

General Information		Lamp Current (Min)	
Cap-Base	GX23-2		15 mA
Nominal lifetime	50,000 hour(s)	Wattage Equivalent	13 W
Switching Cycle	50,000	Starting Time (Nom)	0.5 s
Lighting Technology	LED	Warm-up time to 60% light	0.5 s
		Power Factor (Fraction)	0.9
		Voltage (Nom)	120-277 V
		UL Type	UL Type A
Light Technical		Temperature	
Color Code	840 [CCT of 4000K]	T-Case Maximum (Nom)	70 °C
Beam Angle (Nom)	150 degree(s)		
Luminous Flux	580 lm	Controls and Dimming	
Color Designation	Cool White (CW)	Dimmable	No
Correlated Color Temperature (Nom)	4000 K		
Luminous Efficacy (rated) (Nom)	116.00 lm/W	Mechanical and Housing	
Color Consistency	<6	Bulb Finish	Frosted
Color rendering index (CRI)	82	Bulb Material	Plastic
LLMF At End Of Nominal Lifetime (Nom)	70 %	Product Length	122.4 mm
		Bulb Shape	PL-C
		Net Weight (Piece)	0.064 kg
Operating and Electrical			
Line Frequency	50 to 60 Hz		
Input Frequency	50 to 60 Hz		
Power Consumption	5 W		
Lamp Current (Max)	50 mA		

PL-C/T

Approval and Application

Energy Saving Product	Yes
Approval Marks	UL certificate RoHS compliance
Energy Consumption kWh/1000 h	- kWh
EU RoHS compliant	Yes
Ambient temperature range	-20 °C to 45 °C

Application Conditions

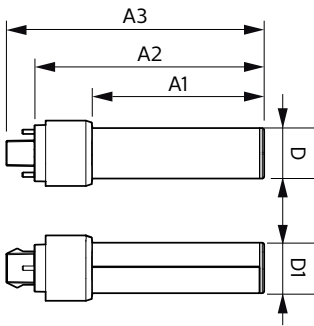
can it be used in closed luminaires	Yes
-------------------------------------	-----

Product Data

Order product name	5PL-C/LED/13H/840/IF5/P/2P 20/1
--------------------	---------------------------------

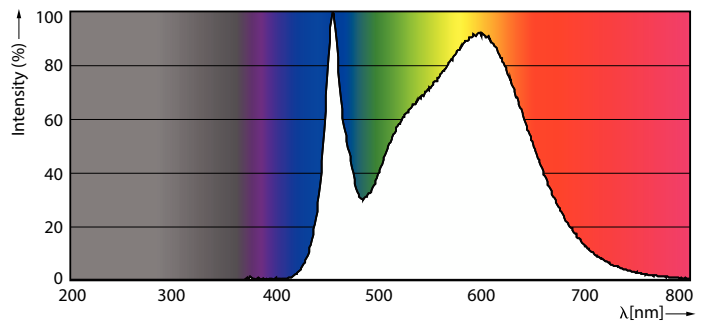
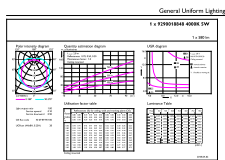
Full product name	5PL-C/LED/13H/840/IF5/P/2P 20/1
Order code	929001884804
Material Nr. (12NC)	929001884804
Numerator - Quantity Per Pack	1
EAN/UPC - Product/Case	046677532345
Numerator - Packs per outer box	20
EAN/UPC - Case	50046677532340

Dimensional drawing



Product	D1	D2	A1	A2	A3
5PL-C/LED/13H/840/IF5/P/2P 20/1	27 mm	27 mm	91.5 mm	122.4 mm	137.4 mm

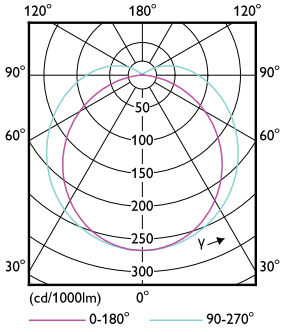
Photometric data



General uniform lighting - 5PL-C/LED/13H/840/IF5/P/2P 20/1

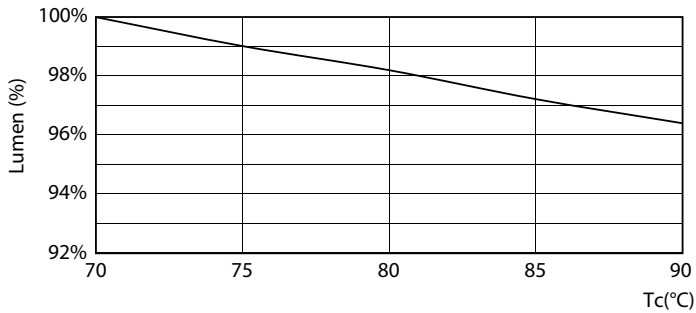
Spectral Power Distribution Colour - 5PL-C/LED/13H/840/IF5/P/2P 20/1

Photometric data

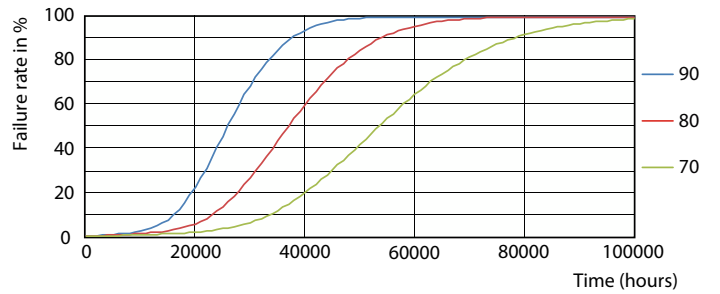


Light Distribution Diagram - 5PL-C/LED/13H/840/IF5/P/2P 20/1

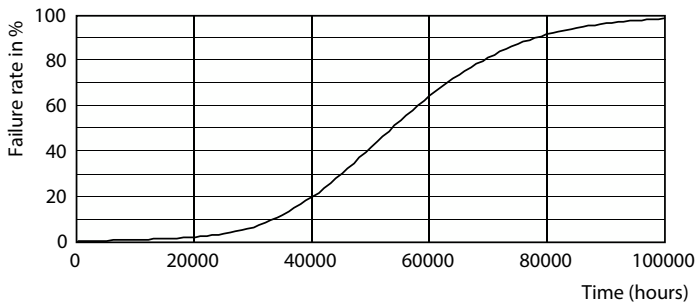
Lifetime



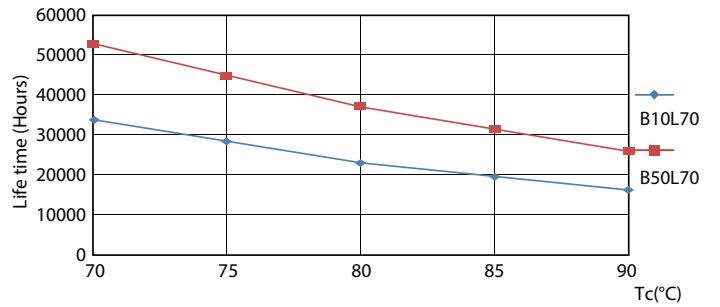
Lumen Maintenance Diagram - 5PL-C/LED/13H/840/IF5/P/2P 20/1



LEDtube PLC 13H 5W GX23-2 827 15D ND



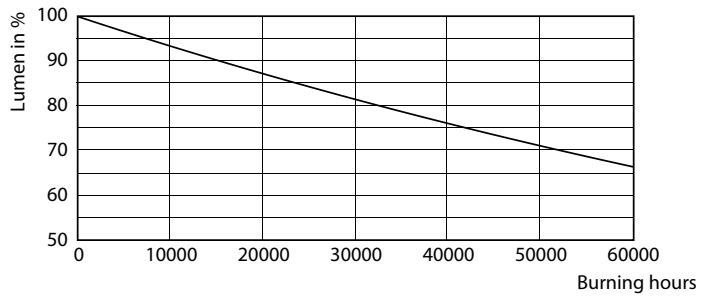
LEDtube PLC 13H 5W GX23-2 827 15D ND



LEDtube PLC 13H 5W GX23-2 827 15D ND

PL-C/T

Lifetime



Lumen Maintenance Diagram - 5PL-C/LED/13H/840/IF5/P/2P 20/1

