



MASTER LEDtube EM/ Mains T8

Master LEDTube 580mm 8W 850 T8 I W JP

The Philips MASTER LEDtube integrates a LED light source into a traditional fluorescent form factor. Its unique design creates a perfectly uniform visual appearance, which cannot be distinguished from traditional fluorescent. These T8 LED tubes are the right choice for absolute performance and are designed to stand up to everyday conditions. Unparalleled savings thanks to low energy consumption and an exceptionally long lifetime ensure this tube masters every demanding application.

Warnings and Safety

- NOTE: The overall energy efficiency and light distribution of any installation that uses these lamps will be determined by the design of the installation.

Product data

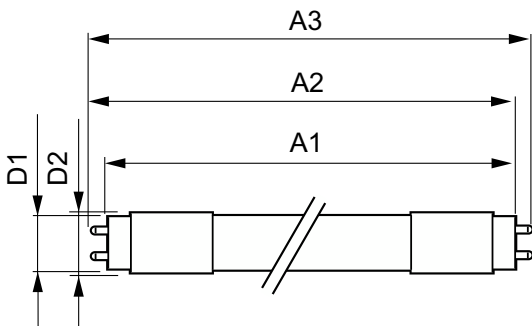
General Information		Color rendering index (CRI)	
Cap-Base	G13 [Medium Bi-Pin Fluorescent]		80
Nominal lifetime	50,000 hour(s)	LLMF At End Of Nominal Lifetime (Nom)	70 %
Switching Cycle	200,000	Operating and Electrical	
Lighting Technology	LED	Line Frequency	50 to 60 Hz
Light Technical		Input Frequency	50 to 60 Hz
Color Code	850 [CCT of 5000K]	Power Consumption	8 W
Beam Angle (Nom)	160 degree(s)	Lamp Current (Max)	86 mA
Luminous Flux	1,050 lm	Lamp Current (Min)	36 mA
Color Designation	Daylight	Starting Time (Nom)	0.5 s
Correlated Color Temperature (Nom)	5000 K	Warm-up time to 60% light	0.5 s
Luminous Efficacy (rated) (Nom)	131.00 lm/W	Power Factor (Fraction)	0.9
Color Consistency	<6	Voltage (Nom)	100-240 V

MASTER LEDtube EM/Mains T8

Temperature	
T-Case Maximum (Nom)	50 °C
Controls and Dimming	
Dimmable	No
Mechanical and Housing	
Bulb Finish	Frosted
Bulb Material	Plastic
Product Length	600 mm
Bulb Shape	T8
Net Weight (Piece)	0.115 kg
Approval and Application	
Energy Saving Product	Yes
Approval Marks	RoHS compliance KEMA Keur certificate

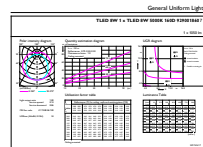
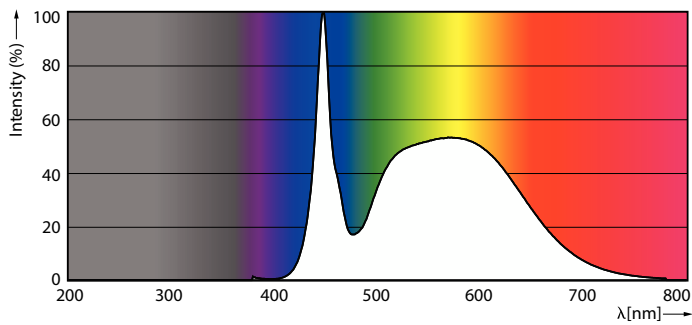
EU RoHS compliant	Yes
Ambient temperature range	-20 °C to 45 °C
Product Data	
Order product name	Master LEDTube 580mm 8W 850 T8 I W JP
Full product name	Master LEDTube 580mm 8W 850 T8 I W JP
Full product code	871951440260700
Order code	929001860748
Material Nr. (12NC)	929001860748
Numerator - Quantity Per Pack	1
EAN/UPC - Product/Case	8719514402607
Numerator - Packs per outer box	20
EAN/UPC - Case	8719514402614

Dimensional drawing



Product	D1	D2	A1	A2	A3
Master LEDTube 580mm 8W 850 T8 I W JP	25.7 mm	28 mm	580.1 mm	587.2 mm	594.3 mm

Photometric data



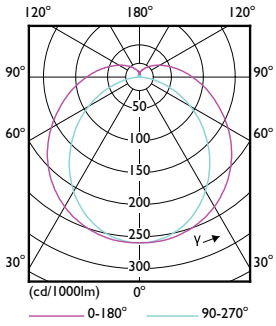
General uniform lighting - Master LEDTube 580mm 8W 850 T8 I W JP

Spectral Power Distribution Colour - Master LEDTube 580mm 8W 850 T8 I W JP

General uniform lighting - Master LEDTube 580mm 8W 850 T8 I W JP

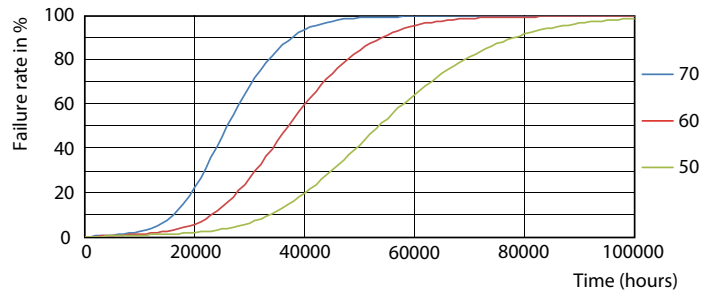
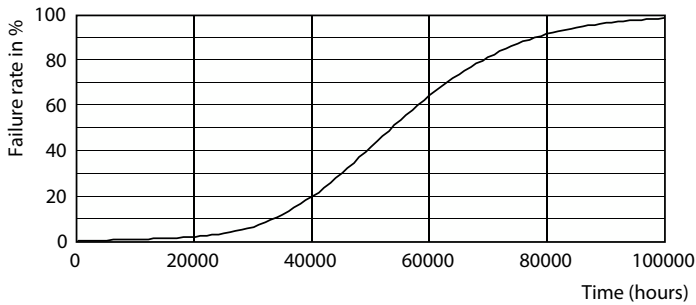
MASTER LEDtube EM/Mains T8

Photometric data

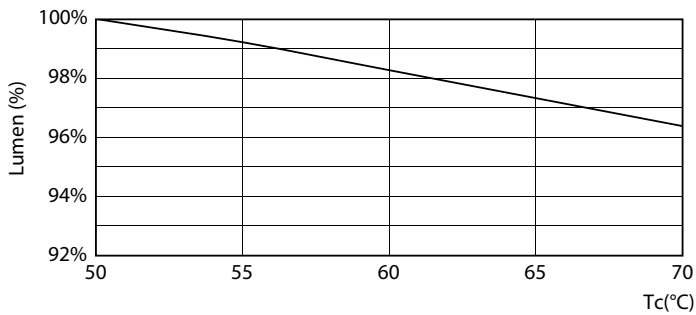


Light Distribution Diagram - Master LEDTube 580mm 8W 850 T8 I W JP

Lifetime

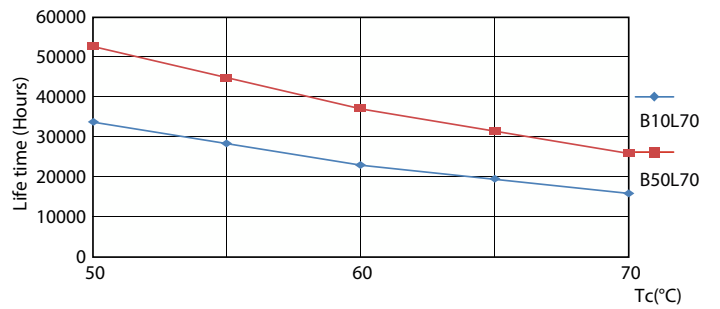


Life Expectancy Diagram



Lumen Maintenance Diagram - Master LEDTube 580mm 8W 850 T8 I W JP

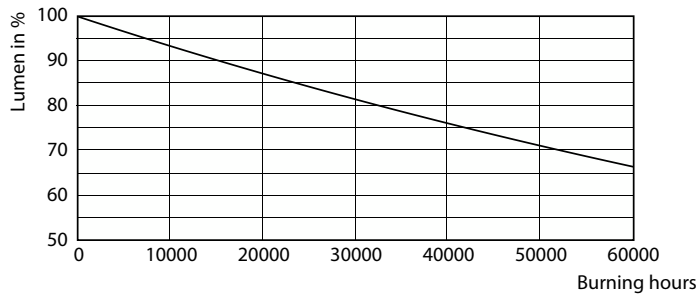
FailureRate



LifetimeVsTc

MASTER LEDtube EM/Mains T8

Lifetime



Lumen Maintenance Diagram - Master LEDTube 580mm 8W 850 T8 I W JP

