



T8

11T8/COR/48-835/MF16/G/BAA 25/1

Our TLEDs are available in InstantFit (Type A / Type C) or MainsFit (Ballast bypass / Type B) versions. The InstantFit lamps work on a broad variety of ballasts and LED drivers. Only InstantFit has over 15,000 lamp & ballast combinations delivering even light output, energy savings and a long lifetime. Our MainsFit products feature a double-ended design, simplifying installation while a proprietary safety circuit minimizes a shock risk. Lamp sizes range from 2-foot to 8-foot and U-bend with a variety of lumen outputs.

Product data

General Information		Input Frequency	
Lighting Technology	LED	Input Frequency	50 to 60 Hz
Switching Cycle	50,000	Power Consumption	11 W
Buy American Compliant Products	Yes	Starting Time (Nom)	0.9 s
Nominal lifetime	50,000 hour(s)	Warm-up time to 60% light	0.9 s
Cap-Base	G13 [Medium Bi-Pin Fluorescent]	Power Factor (Fraction)	0.9
Light Technical		Voltage (Nom)	120-277 V
Color Code	835 [CCT of 3500K]	Temperature	
Beam Angle (Nom)	240 degree(s)	Ambient temperature range	-20 °C to 45 °C
Luminous Flux	1,650 lumen	T-Case Maximum (Nom)	70 °C
Color Designation	White (WH)	Controls and Dimming	
Correlated Color Temperature (Nom)	3500 K	Dimmable	No
Luminous Efficacy (rated) (Nom)	150.00 lm/W	Mechanical and Housing	
Color Consistency	<6	Bulb Finish	Frosted
Color rendering index (CRI)	80	Bulb Material	Glass
LLMF At End Of Nominal Lifetime (Nom)	70 %	Product Length	1,200 mm
Operating and Electrical		Bulb Shape	Tube, double-ended
Line Frequency	50 to 60 Hz		

T8

Approval and Application

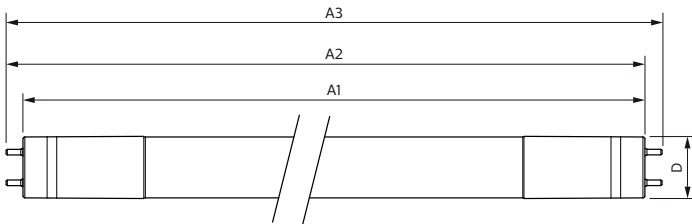
Energy Saving Product	Yes
Approval Marks	RoHS compliance UL certificate DLC compliance
Energy Consumption kWh/1000 h	- kWh
EU RoHS compliant	Yes

Product Data

Order product name	11T8/COR/48-835/MF16/G/BAA 25/1
--------------------	---------------------------------

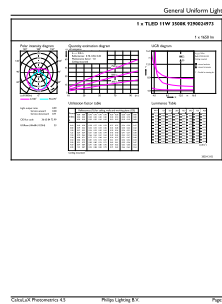
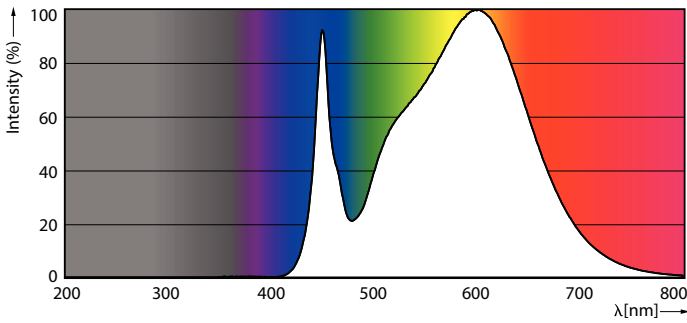
Order code	929002497304
Numerator - Quantity Per Pack	1
Numerator - Packs per outer box	25
Material number (12NC)	929002497304
Full product name	11T8/COR/48-835/MF16/G/BAA 25/1
EAN/UPC - Case	50046677563696

Dimensional drawing



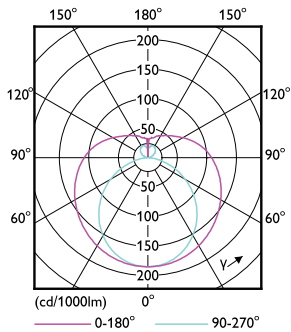
Product	D1	D2	A1	A2	A3
11T8/COR/48-835/MF16/G/BAA 25/1	25.7 mm	28 mm	1,198.2 mm	1,205.3 mm	1,212.4 mm

Photometric data



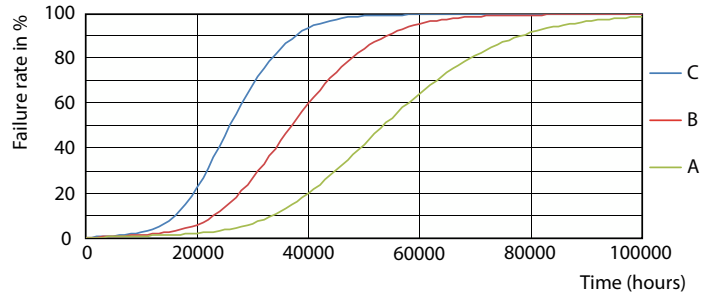
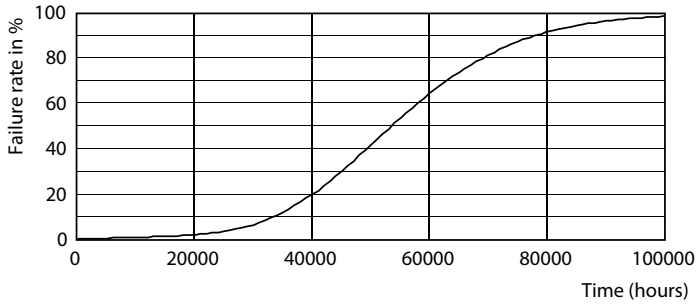
Spectral Power Distribution Colour - 11T8/COR/48-835/MF16/G/BAA 25/1

General uniform lighting - 11T8/COR/48-835/MF16/G/BAA 25/1

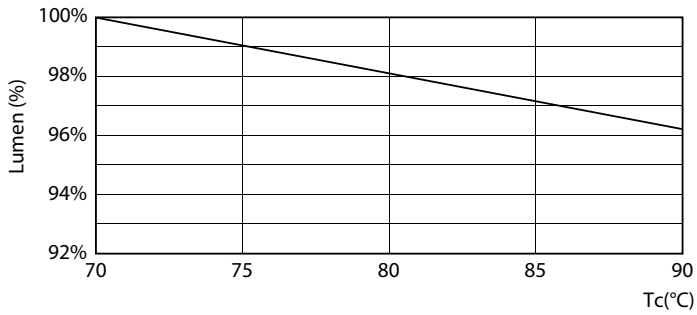


Light Distribution Diagram - 11T8/COR/48-835/MF16/G/BAA 25/1

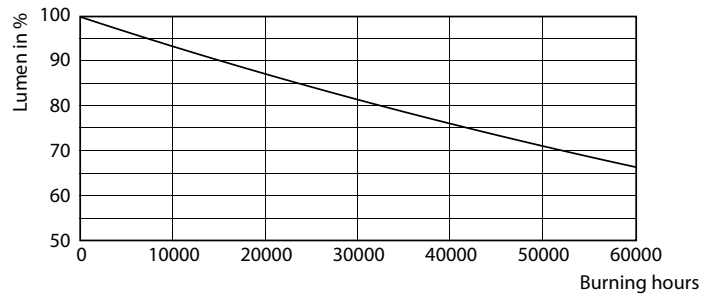
Lifetime



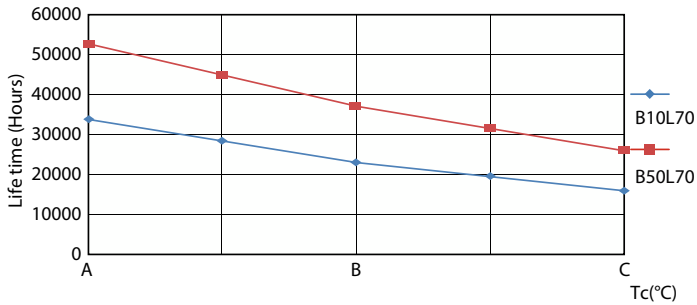
Life Expectancy Diagram - 11T8/COR/48-835/MF16/G/BAA 25/1



Life Expectancy Diagram



Lumen Maintenance Diagram - 11T8/COR/48-835/MF16/G/BAA 25/1



Lumen Maintenance Diagram - 11T8/COR/48-835/MF16/G/BAA 25/1

Life Expectancy Diagram

