



MASTER LEDtube Mains T5



MAS LEDtube 1500mm HE 20W 840 T5

The new Philips Master LEDtube Mains T5 brings simplicity to your lighting project. You don't need to pay attention to the driver technology anymore. Thanks to a unique design, Philips MASTER LEDtube Mains T5 installs in luminaires operating on mains power connection. So simple to operate! . Perfectly safe, reliable & easy to install Philips MASTER LEDtube Mains T5 is the ideal alternative to standard fluorescent tubes to maximize value over lifetime with high energy saving and lower maintenance costs.

Product data

General Information	
Cap-Base	G5 [G5]
Nominal lifetime	50,000 hour(s)
Switching Cycle	200,000
Lighting Technology	LED
Flux measurement reference	Sphere
EU RoHS compliant	Yes
Light Technical	
Color Code	840 [CCT of 4000K]
Beam Angle (Nom)	200 degree(s)
Luminous Flux	3,000 lumen
Color Designation	Cool White (CW)
Correlated Color Temperature (Nom)	4000 K
Luminous Efficacy (rated) (Nom)	150.00 lm/W
Color Consistency	<6
Color rendering index (CRI)	80

LLMF At End Of Nominal Lifetime (Nom) 70 %	
Operating and Electrical	
Line Frequency	50 to 60 Hz
Input Frequency	50 to 60 Hz
Power Consumption	20 W
Starting Time (Nom)	0.5 s
Warm-up time to 60% light	0.5 s
Power Factor (Fraction)	0.9
Voltage (Nom)	100-240 V
Temperature	
Ambient temperature range	-20 °C to 45 °C
T-Case Maximum (Nom)	75 °C
Controls and Dimming	
Dimmable	No

MASTER LEDtube Mains T5

Mechanical and Housing

Bulb Finish	Frosted
Bulb Material	Glass
Product Length	1,500 mm
Bulb Shape	Tube, double-ended

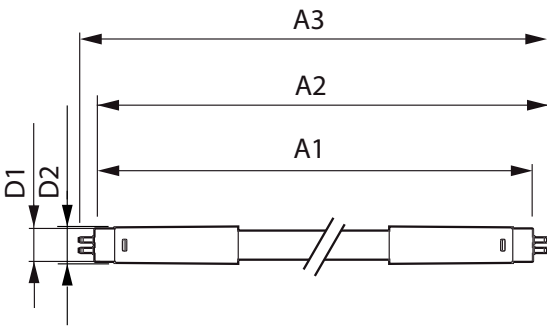
Approval and Application

Energy Efficiency Class	D
Energy Saving Product	Yes
Approval Marks	RoHS compliance CE marking KEMA Keur certificate
Energy Consumption kWh/1000 h	20 kWh
EPREL Registration Number	1476404

Product Data

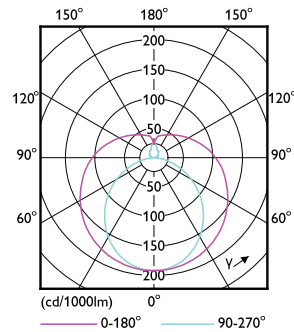
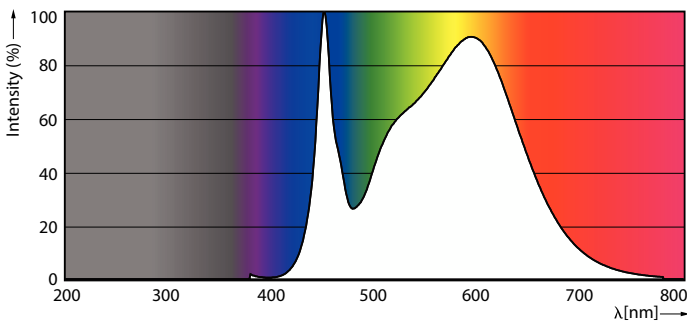
Full product code	871869978357000
Order product name	MAS LEDtube 1500mm HE 20W 840 T5
Order code	929002421308
Numerator - Quantity Per Pack	1
Numerator - Packs per outer box	10
Material Nr. (12NC)	929002421308
Full product name	MAS LEDtube 1500mm HE 20W 840 T5
EAN/UPC - Case	8718699783587
EAN/UPC - Product/Case	8718699783570

Dimensional drawing



Product	D1	D2	A1	A2	A3
MAS LEDtube 1500mm HE 20W 840 T5	15.8 mm	19 mm	1,449 mm	1,454.9 mm	1,463.2 mm

Photometric data

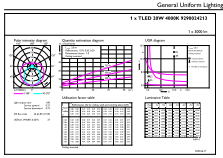


Spectral Power Distribution Colour - MAS LEDtube 1500mm HE 20W 840 T5

Light Distribution Diagram - MAS LEDtube 1500mm HE 20W 840 T5

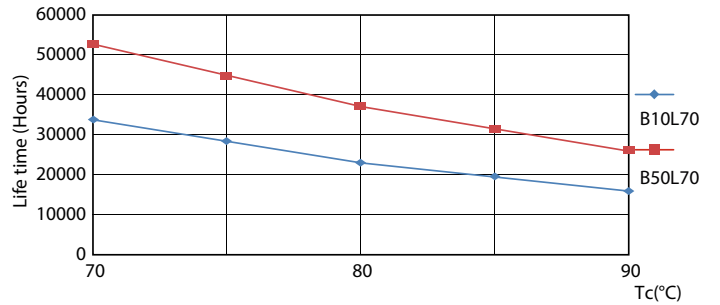
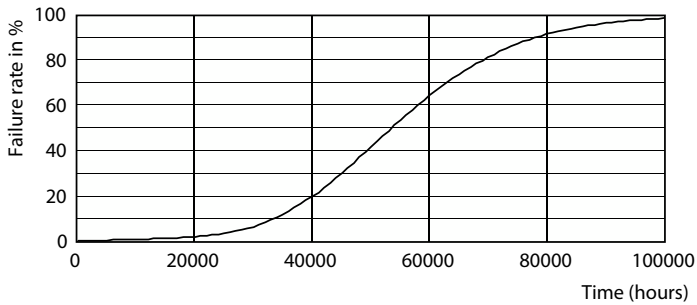
MASTER LEDtube Mains T5

Photometric data



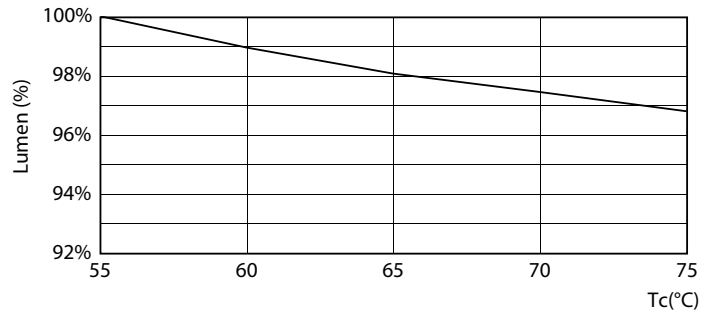
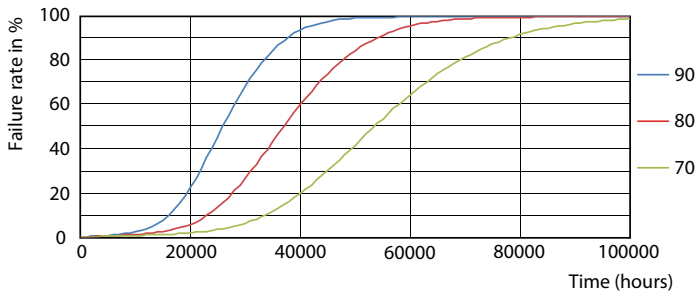
General uniform lighting - MAS LEDtube 1500mm HE 20W 840 T5

Lifetime



Life Expectancy Diagram - MAS LEDtube 1500mm HE 20W 840 T5

Life Expectancy Diagram - MAS LEDtube 1500mm HE 20W 840 T5

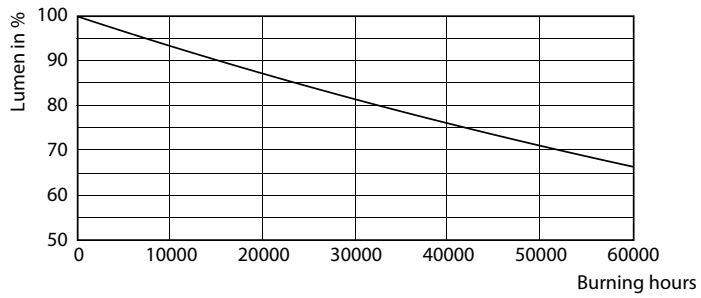


Life Expectancy Diagram - MAS LEDtube 1500mm HE 20W 840 T5

Lumen Maintenance Diagram - MAS LEDtube 1500mm HE 20W 840 T5

MASTER LEDtube Mains T5

Lifetime



Lumen Maintenance Diagram - MAS LEDtube 1500mm HE 20W 840 T5

