



MASTER LEDtube Mains T5

MAS LEDtube 1200mm HE 16.5W 830 T5

The new Philips Master LEDtube Mains T5 brings simplicity to your lighting project. You don't need to pay attention to the driver technology anymore. Thanks to a unique design, Philips MASTER LEDtube Mains T5 installs in luminaires operating on mains power connection. So simple to operate! . Perfectly safe, reliable & easy to install Philips MASTER LEDtube Mains T5 is the ideal alternative to standard fluorescent tubes to maximize value over lifetime with high energy saving and lower maintenance costs.

Product data

General Information		Operating and Electrical	
Cap-Base	G5	Line Frequency	50 to 60 Hz
Nominal lifetime	50,000 hour(s)	Input Frequency	50 to 60 Hz
Switching Cycle	200,000	Power Consumption	16.5 W
Lighting Technology	LED	Lamp Current (Max)	180 mA
EU RoHS compliant	Yes	Lamp Current (Min)	70 mA
Light Technical		Starting Time (Nom)	0.5 s
Color Code	830 [CCT of 3000K]	Warm-up time to 60% light	0.5 s
Beam Angle (Nom)	200 degree(s)	Power Factor (Fraction)	0.9
Luminous Flux	2,300 lm	Voltage (Nom)	100-240 V
Color Designation	White (WH)	Temperature	
Correlated Color Temperature (Nom)	3000 K	Ambient temperature range	-20 °C to 45 °C
Luminous Efficacy (rated) (Nom)	139.00 lm/W	T-Case Maximum (Nom)	70 °C
Color Consistency	<6	Controls and Dimming	
Color rendering index (CRI)	80	Dimmable	No
LLMF At End Of Nominal Lifetime (Nom)	70 %		

MASTER LEDtube Mains T5

Mechanical and Housing

Bulb Finish	Frosted
Bulb Material	Glass
Product Length	1,200 mm
Bulb Shape	T5

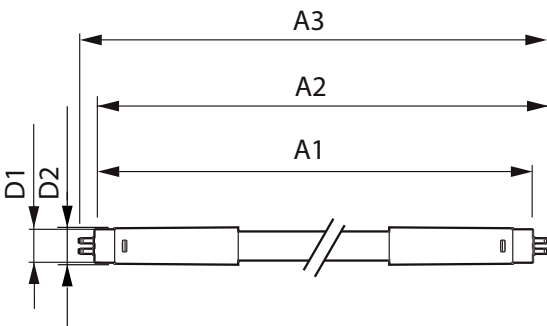
Approval and Application

Energy Saving Product	Yes
Approval Marks	RoHS compliance CE marking KEMA Keur certificate
Energy Consumption kWh/1000 h	17 kWh

Product Data

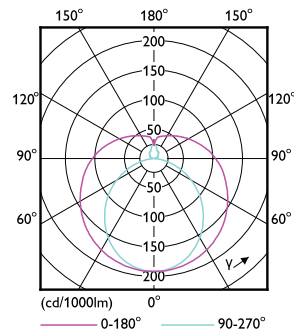
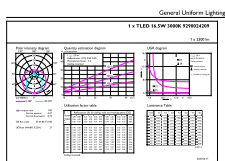
Order product name	MAS LEDtube 1200mm HE 16.5W 830 T5
Full product name	MAS LEDtube 1200mm HE 16.5W 830 T5
Full product code	871869978349500
Order code	929002420908
Material Nr. (12NC)	929002420908
Numerator - Quantity Per Pack	1
EAN/UPC - Product/Case	8718699783495
Numerator - Packs per outer box	10
EAN/UPC - Case	8718699783501

Dimensional drawing



Product	D1	D2	A1	A2	A3
MAS LEDtube 1200mm HE 16.5W 830 T5	15.8 mm	19 mm	1,149 mm	1,156.1 mm	1,163.2 mm

Photometric data

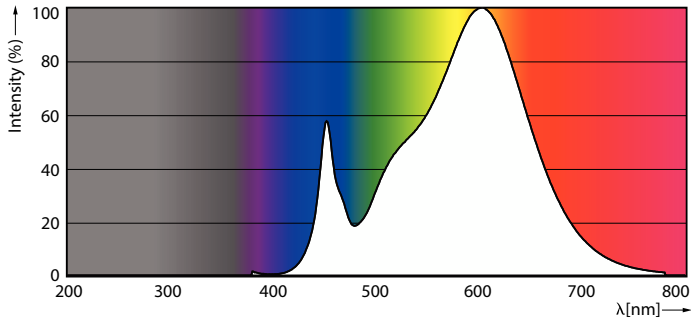


General uniform lighting - MAS LEDtube 1200mm HE 16.5W 830 T5

Light Distribution Diagram - MAS LEDtube 1200mm HE 16.5W 830 T5

MASTER LEDtube Mains T5

Photometric data

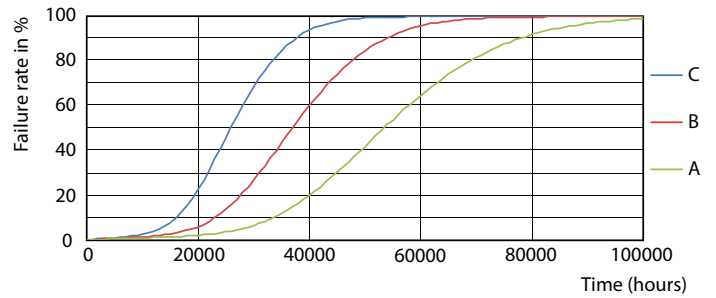


Spectral Power Distribution Colour - MAS LEDtube 1200mm HE 16.5W 830 T5

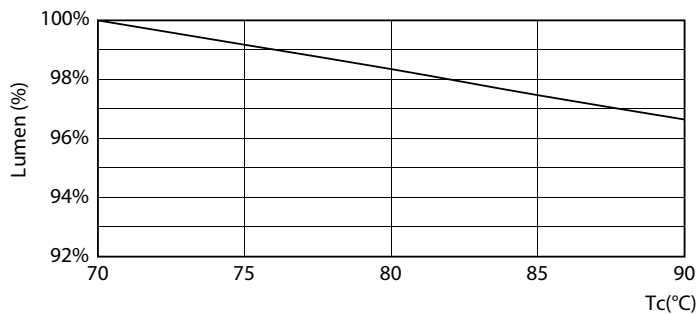
Lifetime



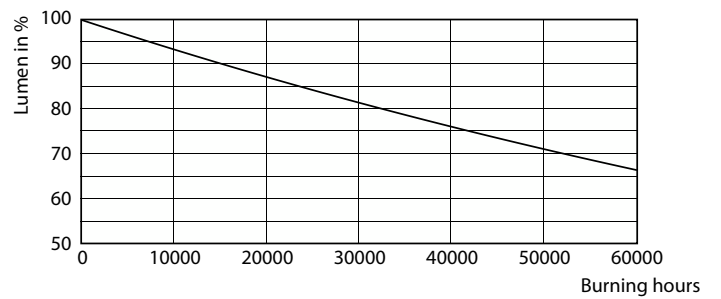
Life Expectancy Diagram - MAS LEDtube 1200mm HE 16.5W 830 T5



Life Expectancy Diagram - MAS LEDtube 1200mm HE 16.5W 830 T5



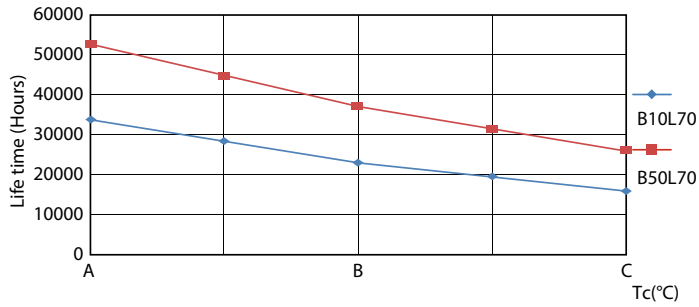
Lumen Maintenance Diagram - MAS LEDtube 1200mm HE 16.5W 830 T5



Lumen Maintenance Diagram - MAS LEDtube 1200mm HE 16.5W 830 T5

MASTER LEDtube Mains T5

Lifetime



Life Expectancy Diagram - MAS LEDtube 1200mm HE 16.5W 830 T5

