



# MASTER LEDtube Mains T5

## MAS LEDtube 600mm HE 8W 840 T5

The new Philips Master LEDtube Mains T5 brings simplicity to your lighting project. You don't need to pay attention to the driver technology anymore. Thanks to a unique design, Philips MASTER LEDtube Mains T5 installs in luminaires operating on mains power connection. So simple to operate! . Perfectly safe, reliable & easy to install Philips MASTER LEDtube Mains T5 is the ideal alternative to standard fluorescent tubes to maximize value over lifetime with high energy saving and lower maintenance costs.

### Product data

General Information		Operating and Electrical	
Cap-Base	G5 [G5]	Line Frequency	50 to 60 Hz
Nominal lifetime	50,000 hour(s)	Input Frequency	50 to 60 Hz
Switching Cycle	200,000	Power Consumption	8 W
Lighting Technology	LED	Starting Time (Nom)	0.5 s
EU RoHS compliant	Yes	Warm-up time to 60% light	0.5 s
		Power Factor (Fraction)	0.9
		Voltage (Nom)	100-240 V
Light Technical		Temperature	
Color Code	840 [CCT of 4000K]	Ambient temperature range	-20 °C to 45 °C
Beam Angle (Nom)	200 degree(s)	T-Case Maximum (Nom)	60 °C
Luminous Flux	1,050 lumen		
Color Designation	Cool White (CW)	Controls and Dimming	
Correlated Color Temperature (Nom)	4000 K	Dimmable	No
Luminous Efficacy (rated) (Nom)	131.00 lm/W		
Color Consistency	<6	Mechanical and Housing	
Color rendering index (CRI)	80	Bulb Finish	Frosted
LLMF At End Of Nominal Lifetime (Nom)	70 %		

# MASTER LEDtube Mains T5

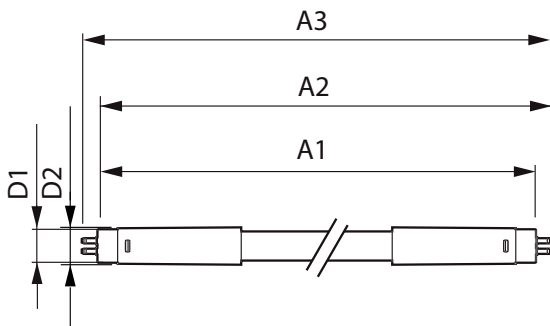
Bulb Material	Glass
Product Length	600 mm
Bulb Shape	Tube, double-ended
<b>Approval and Application</b>	
Energy Saving Product	Yes
Approval Marks	RoHS compliance CE marking KEMA Keur certificate
Energy Consumption kWh/1000 h	8 kWh

## Product Data

Full product code	871869978345700
-------------------	-----------------

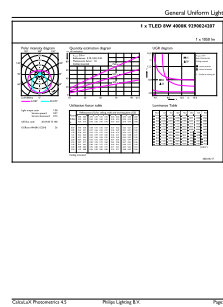
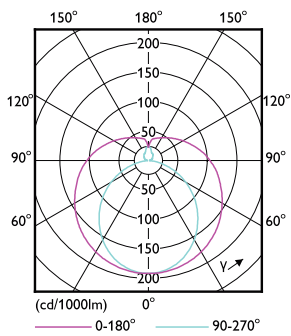
Order product name	MAS LEDtube 600mm HE 8W 840 T5
Order code	929002420708
Numerator - Quantity Per Pack	1
Numerator - Packs per outer box	10
Material Nr. (12NC)	929002420708
Full product name	MAS LEDtube 600mm HE 8W 840 T5
EAN/UPC - Case	8718699783464

## Dimensional drawing



Product	D1	D2	A1	A2	A3
MAS LEDtube 600mm HE 8W 840 T5	15.8 mm	19 mm	549 mm	556.1 mm	563.2 mm

## Photometric data

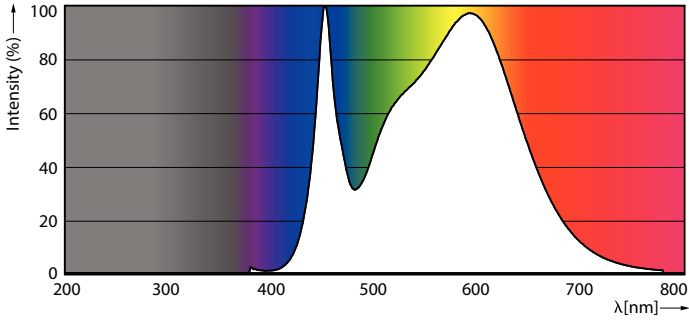


Light Distribution Diagram - MAS LEDtube 600mm HE 8W 840 T5

General uniform lighting - MAS LEDtube 600mm HE 8W 840 T5

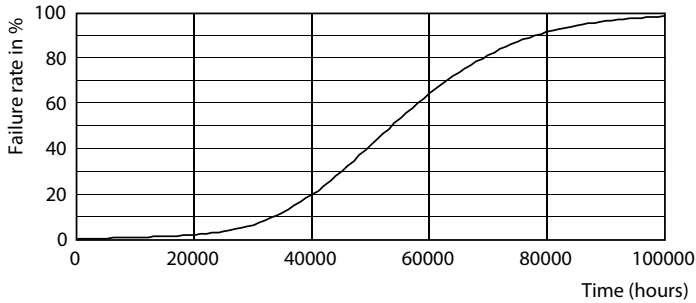
# MASTER LEDtube Mains T5

## Photometric data

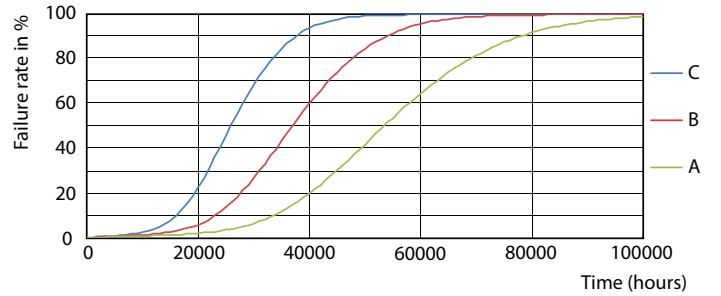


Spectral Power Distribution Colour - MAS LEDtube 600mm HE 8W 840 T5

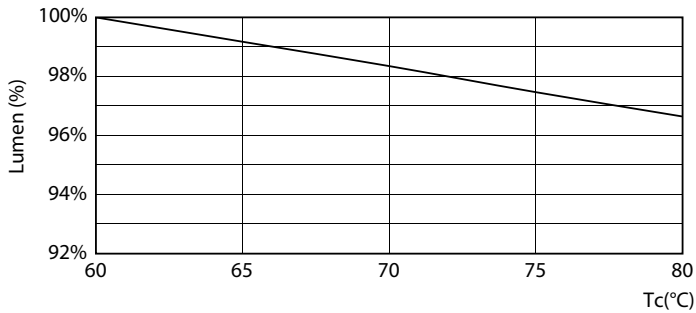
## Lifetime



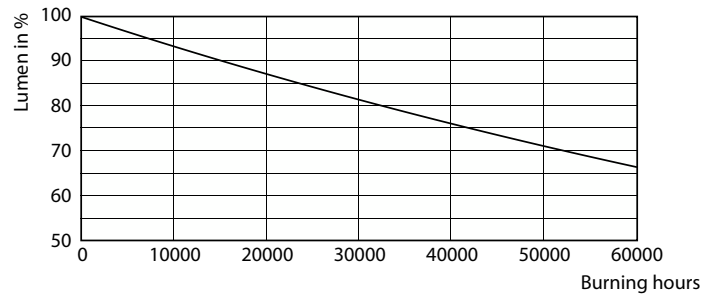
Life Expectancy Diagram - MAS LEDtube 600mm HE 8W 840 T5



Life Expectancy Diagram



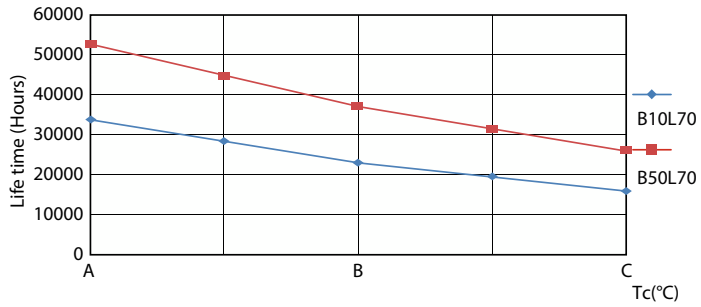
Lumen Maintenance Diagram - MAS LEDtube 600mm HE 8W 840 T5



Lumen Maintenance Diagram - MAS LEDtube 600mm HE 8W 840 T5

# MASTER LEDtube Mains T5

## Lifetime



### Life Expectancy Diagram

