



MASTER LEDtube InstantFit HF T5



Master LEDtube HF 1200mm HO 26W 830 T5 OE

Philips MASTER LEDtube InstantFit T5 integrates a LED light source into a traditional fluorescent form factor. Its unique design creates a perfectly uniform visual appearance which cannot be distinguished from traditional fluorescent. The Philips MASTER LEDtube InstantFit T5 is the ideal solution for customers who have higher light output requirements and want to maximize value over lifetime. Full energy savings & longer lifetime result in attractive payback times and TCO benefits.

Product data

| General Information | |
|----------------------------|----------|
| Cap-Base | G5 [G5] |
| EU RoHS compliant | Yes |
| Nominal Lifetime (Nom) | 60000 h |
| Switching Cycle | 50000X |
| Technical Type | 26-54W |
| Flux measurement reference | Sphere |

| Light Technical | |
|---------------------------------------|---------------------|
| Color Code | 830 [CCT of 3000K] |
| Beam Angle (Nom) | 200 ° |
| Luminous Flux (Nom) | 3700 lm |
| Color Designation | White (WH) |
| Correlated Color Temperature (Nom) | 3000 K |
| Luminous Efficacy (rated) (Nom) | 142.00 lm/W |
| Color Consistency | <6 |
| Color Rendering Index (Nom) | 80 |
| LLMF At End Of Nominal Lifetime (Nom) | 70 % |

| Operating and Electrical | |
|---------------------------------|---------------|
| Input Frequency | 30K to 60K Hz |
| Power (Nom) | 26 W |
| Lamp Current (Max) | 620 mA |
| Lamp Current (Min) | 300 mA |
| Starting Time (Nom) | 0.5 s |
| Warm Up Time to 60% Light (Nom) | 0.5 s |
| Power Factor (Nom) | 0.9 |
| Voltage (Nom) | 20-90 V |

| Temperature | |
|----------------------|--------|
| T-Ambient (Max) | 45 °C |
| T-Ambient (Min) | -20 °C |
| T-Storage (Max) | 65 °C |
| T-Storage (Min) | -40 °C |
| T-Case Maximum (Nom) | 55 °C |

MASTER LEDtube InstantFit HF T5

Controls and Dimming

Dimmable Only with specific dimmers

Mechanical and Housing

Bulb Finish Frosted
Bulb Material Glass
Product Length 1200 mm
Bulb Shape Tube, double-ended

Approval and Application

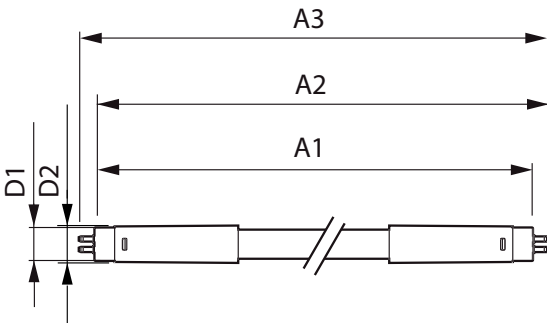
Energy Efficiency Class E
Energy Saving Product Yes
Approval Marks RoHS compliance TUV CE marking KEMA Keur certificate
Energy Consumption kWh/1000 h 26 kWh

EPREL Registration Number 406209

Product Data

Full product code 871869974951400
Order product name Master LEDtube HF 1200mm HO 26W 830 T5 OE
EAN/UPC - Product 8718699749514
Order code 929002352002
Numerator - Quantity Per Pack 1
Numerator - Packs per outer box 10
Material Nr. (12NC) 929002352002
Net Weight (Piece) 0.240 kg

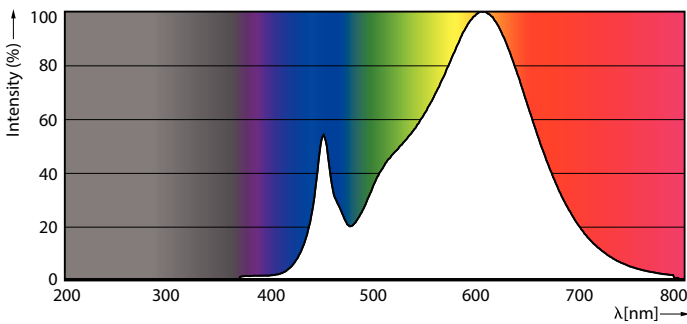
Dimensional drawing



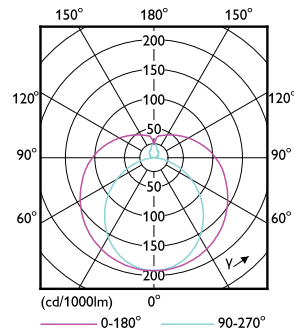
TLED 1200mm HF 26W 3900lm 3000K G5

| Product | D1 | D2 | A1 | A2 | A3 |
|---|---------|-------|---------|---------|---------|
| Master LEDtube HF 1200mm HO 26W 830 T5 OE | 15.5 mm | 19 mm | 1149 mm | 1156 mm | 1163 mm |

Photometric data



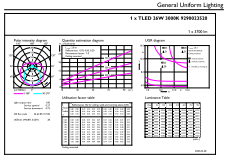
LEDtube MAS 26W G5 3700lm 830



LEDtube MAS 26W G5 3700lm

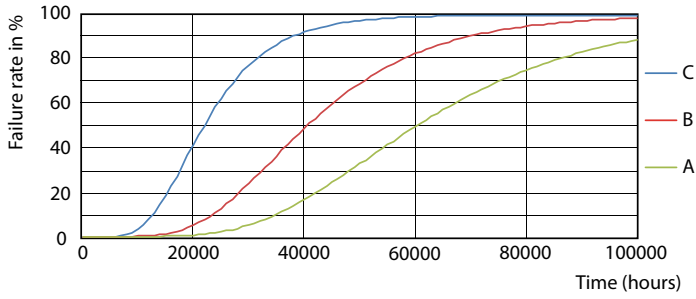
MASTER LEDtube InstantFit HF T5

Photometric data

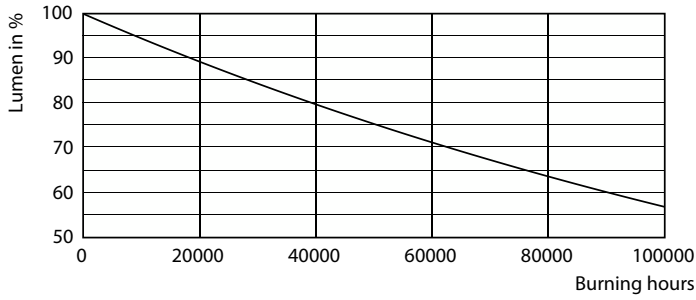


LEDtube MAS 26W G5 3700lm 830 1200mm

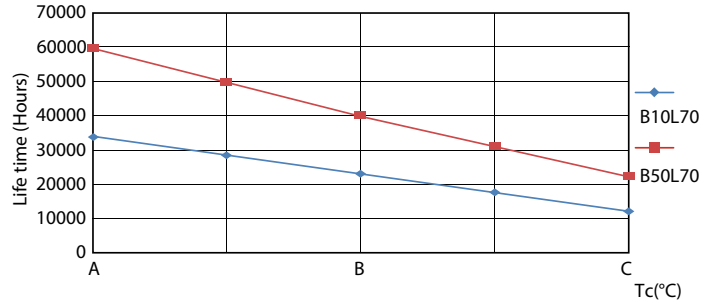
Lifetime



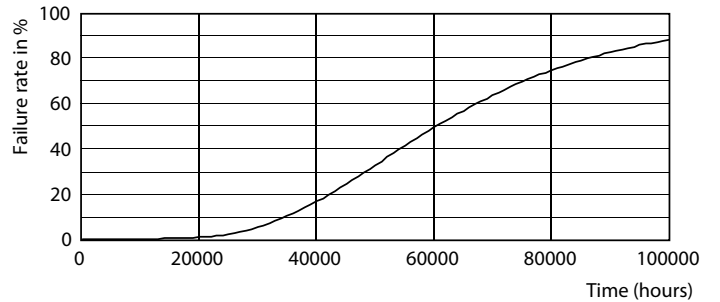
LEDtube_60K_FailureRate



LEDtube_60K



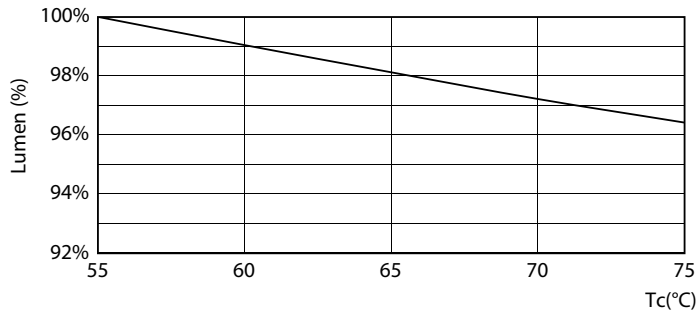
LEDtube_60K_LifetimeVsTc



LEDtube_60K

MASTER LEDtube InstantFit HF T5

Lifetime



LEDtube 26W 60K LumenVsTc 1

