



Master Value LEDtube Universal T8

MAS LEDtube VLE UN 1200mm UO 16W840 T8

The new Philips MASTER LEDtube Universal T8 brings ease and simplicity to your lighting project. That's because you do not need to match the driver technology anymore: a unique design enables the Philips MASTER LEDtube Universal T8 to directly fit in luminaires operating on either electromagnetic ballasts or HF electronic ballasts or mains power connection. It is so simple to operate and you no longer need to stock two types of tubes! Perfectly safe, reliable & easy to install Philips MASTER LEDtube Universal T8 is the ideal alternative to standard fluorescent tubes to maximize value over lifetime with high energy saving and lower maintenance costs.

Product data

| General Information | | LLMF At End Of Nominal Lifetime (Nom) 70 % | |
|------------------------------------|----------------------------------|--|-------------|
| Cap-Base | G13 [Medium Bi-Pin Fluorescent] | Operating and Electrical | |
| EU RoHS compliant | Yes | Input Frequency | 50 to 60 Hz |
| Nominal Lifetime (Nom) | 50000 h | Power (Nom) | 16 W |
| Switching Cycle | 50000X | Lamp Current (Nom) | 75 mA |
| Technical Type | 16-36W | Starting Time (Nom) | 0.5 s |
| Light Technical | | Warm Up Time to 60% Light (Nom) | 0.5 s |
| Color Code | 840 [CCT of 4000K] | Power Factor (Nom) | 0.9 |
| Beam Angle (Nom) | 240 ° | Voltage (Nom) | 220-240 V |
| Luminous Flux (Nom) | 2500 lm | Temperature | |
| Color Designation | Cool White (CW) | T-Ambient (Max) | 45 °C |
| Correlated Color Temperature (Nom) | 4000 K | T-Ambient (Min) | -20 °C |
| Luminous Efficacy (rated) (Nom) | 156.00 lm/W | T-Storage (Max) | 65 °C |
| Color Consistency | <6 | T-Storage (Min) | -40 °C |
| Color Rendering Index (Nom) | 83 | | |

Master Value LEDtube Universal T8

| | |
|----------------------|-------|
| T-Case Maximum (Nom) | 50 °C |
|----------------------|-------|

Controls and Dimming

| | |
|----------|----|
| Dimmable | No |
|----------|----|

Mechanical and Housing

| | |
|----------------|--------------------|
| Bulb Finish | Frosted |
| Bulb Material | Glass |
| Product Length | 1200 mm |
| Bulb Shape | Tube, double-ended |

Approval and Application

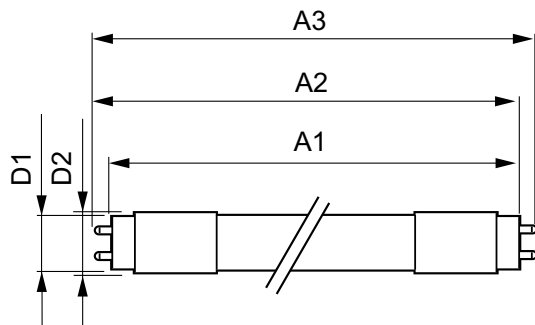
| | |
|-----------------------|--|
| Energy Saving Product | Yes |
| Approval Marks | RoHS compliance TUV CE marking KEMA Keur certificate |

| | |
|-------------------------------|--------|
| Energy Consumption kWh/1000 h | 16 kWh |
|-------------------------------|--------|

Product Data

| | |
|---------------------------------|--|
| Full product code | 871869973919500 |
| Order product name | MAS LEDtube VLE UN 1200mm UO 16W840 T8 |
| EAN/UPC - Product | 8718699739195 |
| Order code | 929002333102 |
| Numerator - Quantity Per Pack | 1 |
| Numerator - Packs per outer box | 10 |
| Material Nr. (12NC) | 929002333102 |
| Net Weight (Piece) | 0.215 kg |

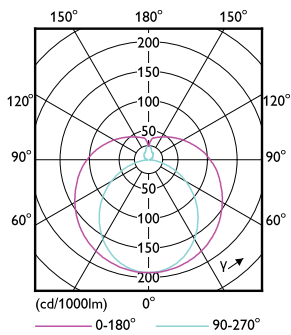
Dimensional drawing



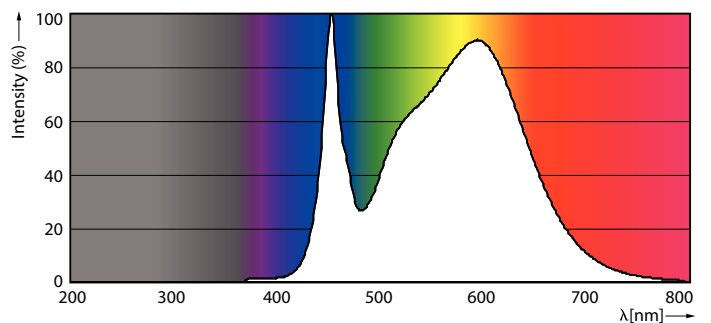
TLED4ft 220-240V 16-36W 2500lm 4000K G13

| Product | D1 | D2 | A1 | A2 | A3 |
|---|---------|-------|-----------|-----------|-----------|
| MAS LEDtube VLE UN 1200mm UO 16W840 T8 | 25.7 mm | 28 mm | 1199.4 mm | 1205.3 mm | 1213.6 mm |

Photometric data



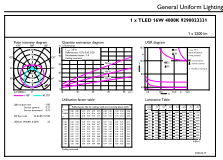
LEDtube T8 G13 MAS



LEDtube 16W G13 2500lm 840

Master Value LEDtube Universal T8

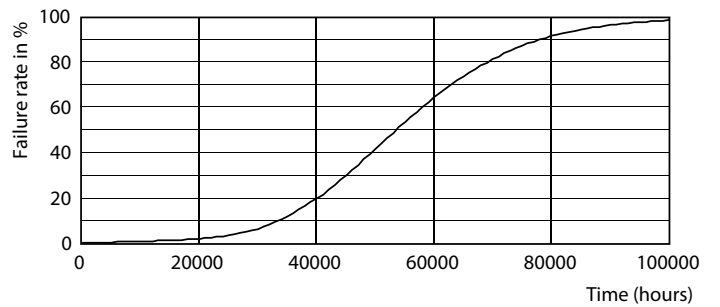
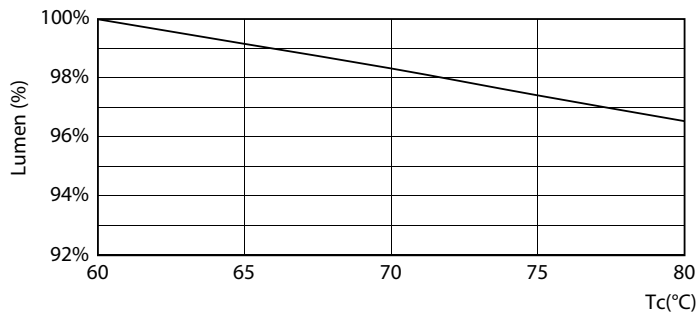
Photometric data



© 2021 Philips Lighting B.V. Page 11

LEDtube 16W G13 2500lm 840

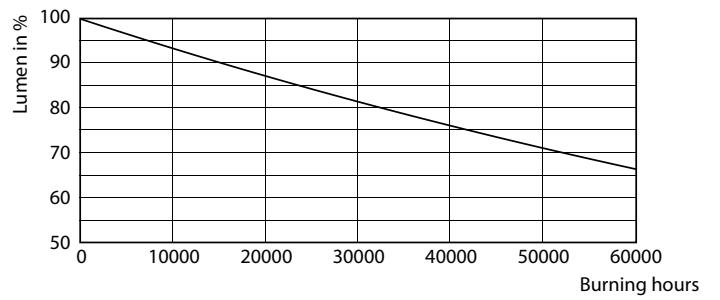
Lifetime



LEDtube 50K MAS LumenVsTc



LEDtube 50K-LED

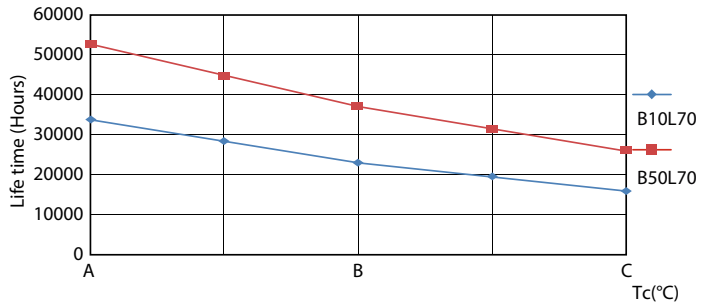


LEDtube 50K FailureRate-LED

LEDtube 50K-LMP

Master Value LEDtube Universal T8

Lifetime



LEDtube 50K LifetimeVsTc-LED

