



MASTER LEDtube EM/ Mains T8



MASTER LEDtube DC72-110V 450mm 6W 840 T8

The Philips MASTER LEDtube integrates a LED light source into a traditional fluorescent form factor. Its unique design creates a perfectly uniform visual appearance which cannot be distinguished from traditional fluorescent. For those that are looking for value for money within limited budget and re-lamping efforts for better light effect and lifetime.

Warnings and Safety

- NOTES: The overall energy efficiency and light distribution of any installation that uses these lamps are determined by the design of the installation.

Product data

General Information	
Cap-Base	G13 [Medium Bi-Pin Fluorescent]
EU RoHS compliant	Yes
Nominal Lifetime (Nom)	50000 h
Switching Cycle	50000X
Flux measurement reference	Sphere

Light Technical	
Color Code	840 [CCT of 4000K]
Beam Angle (Nom)	240 °
Luminous Flux (Nom)	850 lm
Color Designation	Cool White (CW)
Correlated Color Temperature (Nom)	4000 K
Luminous Efficacy (rated) (Nom)	141.00 lm/W
Color Consistency	<6
Color Rendering Index (Nom)	80

LLMF At End Of Nominal Lifetime (Nom) 70 %	
--	--

Operating and Electrical	
Input Frequency	- Hz
Power (Nom)	6 W
Lamp Current (Max)	85 mA
Lamp Current (Min)	57 mA
Starting Time (Nom)	0.5 s
Warm Up Time to 60% Light (Nom)	0.5 s
Power Factor (Nom)	0.9
Voltage (Nom)	72-110 V

Temperature	
T-Ambient (Max)	45 °C
T-Ambient (Min)	-20 °C
T-Storage (Max)	65 °C

MASTER LEDtube EM/Mains T8

T-Storage (Min)	-40 °C
T-Case Maximum (Nom)	55 °C

Controls and Dimming

Dimmable	No
----------	----

Mechanical and Housing

Bulb Finish	Frosted
Bulb Material	Glass
Product Length	500 mm
Bulb Shape	Tube, double-ended

Approval and Application

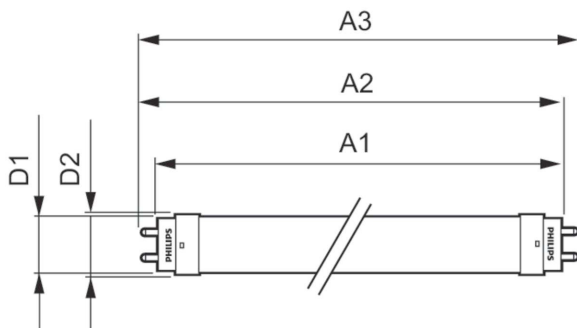
Energy Efficiency Class	E
Energy Saving Product	Yes
Approval Marks	RoHS compliance CE marking KEMA Keur certificate

Energy Consumption kWh/1000 h	6 kWh
EPREL Registration Number	491847

Product Data

Full product code	871869973687300
Order product name	MASTER LEDtube DC72-110V 450mm 6W 840 T8
EAN/UPC - Product	8718699736873
Order code	929002329802
Numerator - Quantity Per Pack	1
Numerator - Packs per outer box	20
Material Nr. (12NC)	929002329802
Net Weight (Piece)	0.110 kg

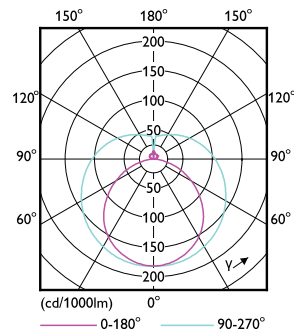
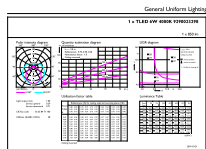
Dimensional drawing



MASTER LEDtube DC72V110V 450mm 6.5W840T8

Product	D1	D2	A1	A2	A3
MASTER LEDtube DC72-110V 450mm 6W 840 T8	25.7 mm	28 mm	437 mm	442 mm	452 mm

Photometric data

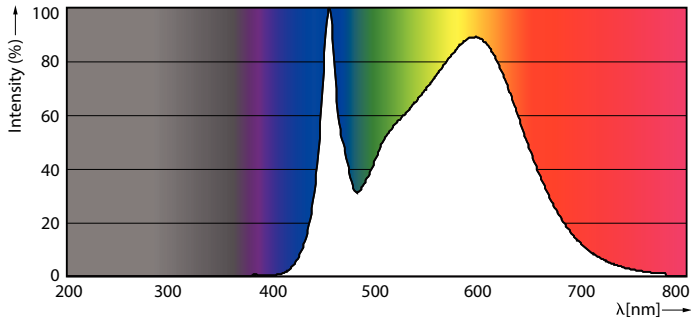


LEDtube 6W G13 840-GUL

LEDtube G13 840-LDD

MASTER LEDtube EM/Mains T8

Photometric data

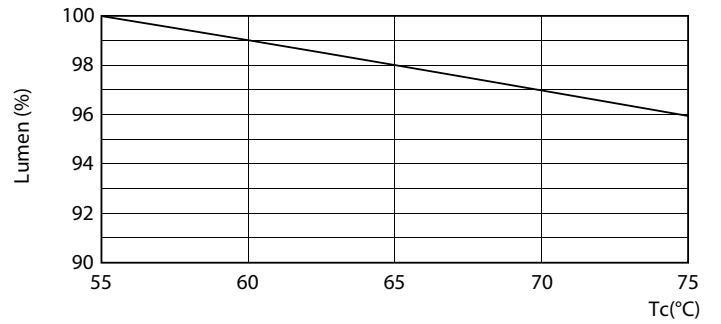


LEDtube 6W G13 840-POC

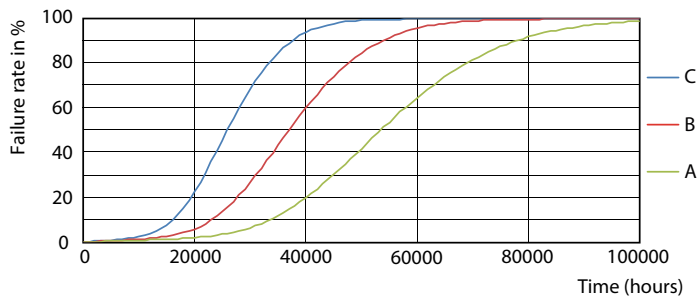
Lifetime



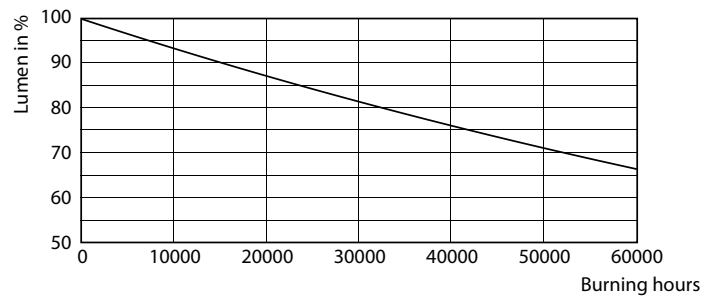
LEDtube 50K-LED



LEDtube 50K LumenVsTc-LMP



LEDtube 50K FailureRate-LED



LEDtube 50K-LMP

MASTER LEDtube EM/Mains T8

Lifetime



LEDtube 50K LifetimeVsTc-LED

