

T8

16.5T8/COR/48-835/MF20/G/347V 25/1

Our TLEDs are available in InstantFit (Type A / Type C) or MainsFit (Ballast bypass / Type B) versions. The InstantFit lamps work on a broad variety of ballasts and LED drivers. Only InstantFit has over 15,000 lamp & ballast combinations delivering even light output, energy savings and a long lifetime. Our MainsFit products feature a double-ended design, simplifying installation while a proprietary safety circuit minimizes a shock risk. Lamp sizes range from 2-foot to 8-foot and U-bend with a variety of lumen outputs.

Product data

General Information	
Cap-Base	G13 [Medium Bi-Pin Fluorescent]
EU RoHS compliant	Yes
Nominal Lifetime (Nom)	50000 h
Switching Cycle	50000X
Light Technical	
Color Code	835 [CCT of 3500K]
Beam Angle (Nom)	240 °
Luminous Flux (Nom)	2000 lm
Color Designation	White (WH)
Correlated Color Temperature (Nom)	3500 K
Luminous Efficacy (rated) (Nom)	121.00 lm/W
Color Consistency	<6
Color Rendering Index (Nom)	80
LLMF At End Of Nominal Lifetime (Nom)	70 %
Operating and Electrical	
Input Frequency	50 to 60 Hz
Power (Nom)	16.5 W

Starting Time (Nom)	0.5 s
Warm Up Time to 60% Light (Nom)	0.9 s
UL Type	Type B - bypass the ballast
Power Factor (Nom)	0.9
Voltage (Nom)	347 V

Temperature	
T-Ambient (Max)	45 °C
T-Ambient (Min)	-20 °C
T-Storage (Max)	85 °C
T-Storage (Min)	-40 °C
T-Case Maximum (Nom)	55 °C

Controls and Dimming	
Dimmable	No

Mechanical and Housing	
Bulb Material	Glass
Product Length	1200 mm

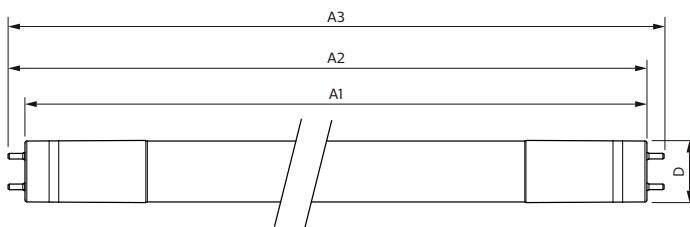
T8

Bulb Shape	Tube, double-ended
Approval and Application	
Energy Saving Product	Yes
Approval Marks	RoHS compliance UL certificate DLC compliance
Energy Consumption kWh/1000 h	- kWh

Product Data	
Order product name	16.5T8/COR/48-835/MF20/G/347V 25/1

EAN/UPC - Product	046677554675
Order code	929002263904
Numerator - Quantity Per Pack	1
Numerator - Packs per outer box	25
Material Nr. (12NC)	929002263904
Net Weight (Piece)	0.096 kg

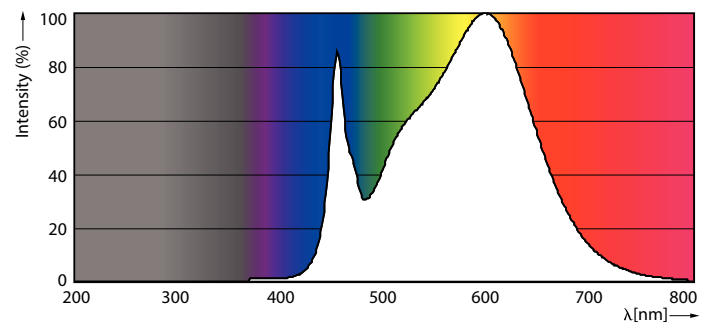
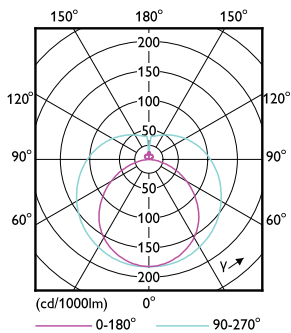
Dimensional drawing



Product	D	A1	A2	A3
16.5T8/COR/48-835/MF20/G/ 347V 25/1	26 mm	1199.4 mm	1206.5 mm	1213.6 mm

TLED 1200mm 16.5-32W 2000lm 3500K G13

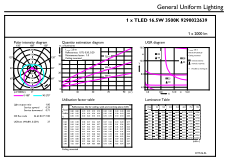
Photometric data



T8 COR MF20 G-LDD

T8 COR MF20 G-POC

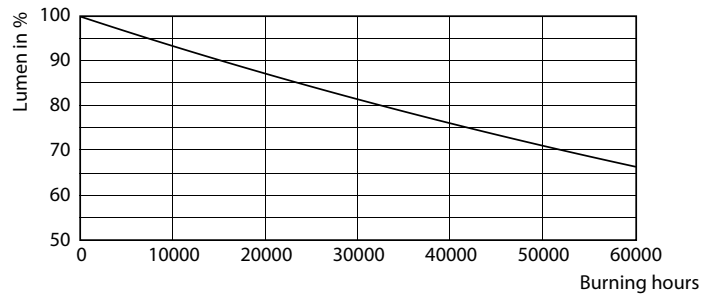
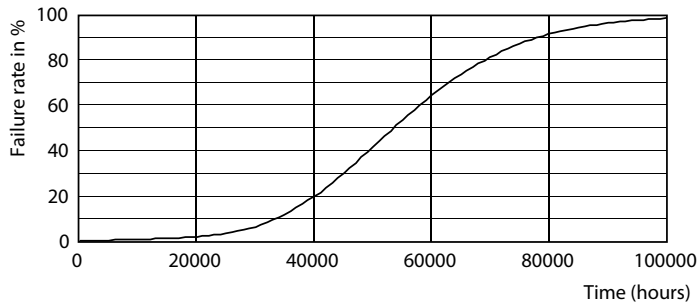
Photometric data



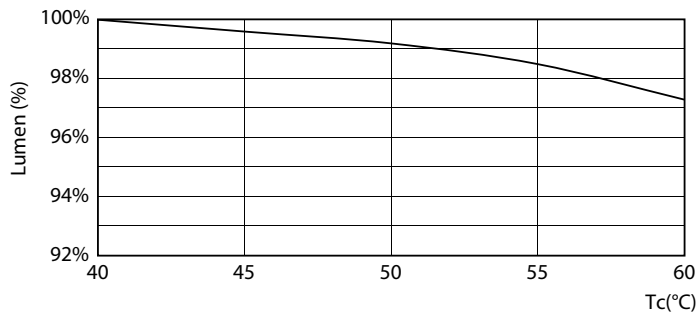
© 2021 Cree Lighting Co. Page 11 of 11

T8 COR MF20 G-GUL

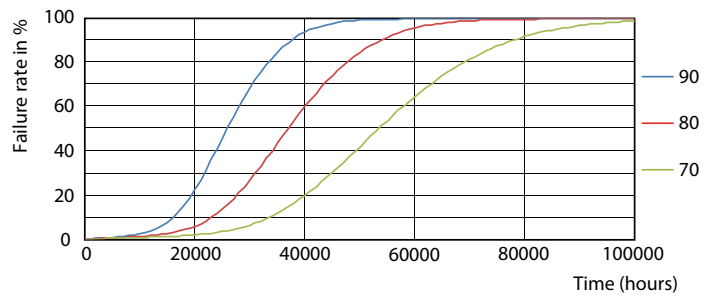
Lifetime



T8 COR MF20 G-LED



T8 COR MF20 G-LMP

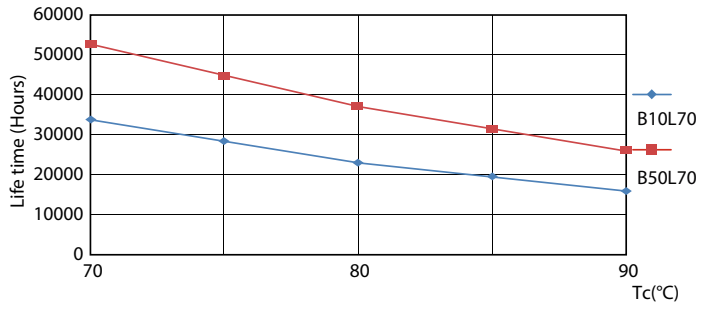


T8 COR G LumenVsTc-LMP

T8 COR G FailureRate-LED

T8

Lifetime



T8 COR G LifetimeVsTc-LED

