



# MASTER Value LEDtube T8



## MAS LEDtube VLE 600mm HO 8W 840 T8

A high-performance LED solution, the professional MASTER Value LED tube is ideal for replacing T8 fluorescent lamps using EM ballast or installing directly on the mains. This product provides an optimal combination of value and performance – for use in all general lighting, office, industry, retail, and hospitality applications. The unique design of this LED T8 tube light offers wide compatibility, safety and fast installation, as well as instant energy savings.

### Product data

General Information	
Cap-Base	G13 [Medium Bi-Pin Fluorescent]
Nominal lifetime	60,000 hour(s)
Switching Cycle	200,000
Lighting Technology	LED
Flux measurement reference	Sphere
CE mark	Yes
EU RoHS compliant	Yes

Light Technical	
Color Code	840 [CCT of 4000K]
Beam Angle (Nom)	190 degree(s)
Luminous Flux	1,050 lumen
Color Designation	Cool White (CW)
Correlated Color Temperature (Nom)	4000 K
Luminous Efficacy (rated) (Nom)	131 lm/W
Color Consistency	<6
Color rendering index (CRI)	80
LLMF At End Of Nominal Lifetime (Nom)	70 %

Flickering value (PstLM)	1
Stroboscopic effect value (SVM)	0.4
Photobiological safety according to EN 62471	RG0

Operating and Electrical	
Line Frequency	50 to 60 Hz
Input Frequency	50 to 60 Hz
Power Consumption	8 W
Starting Time (Nom)	0.5 s
Warm-up time to 60% light	0.5 s
Power Factor (Fraction)	0.9
Voltage (Nom)	220-240 V
LED alternative to fluorescent lamp power	18 W

Temperature	
Ambient temperature range	-20 °C to 45 °C
T-Case Maximum (Nom)	55 °C

# MASTER Value LEDtube T8

## Controls and Dimming

Dimmable	No
----------	----

## Mechanical and Housing

Bulb Finish	Frosted
Bulb Material	Glass
Product Length	600 mm
Bulb Shape	Tube, double-ended

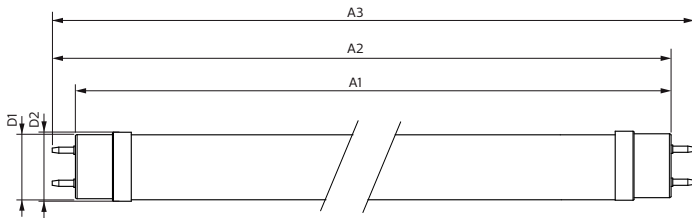
## Approval and Application

Energy Efficiency Class	E
Energy Saving Product	Yes
Approval Marks	RoHS compliance TUV CE marking KEMA Keur certificate
Energy Consumption kWh/1000 h	8 kWh
EPREL Registration Number	1095863

## Product Data

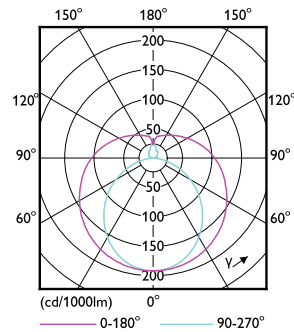
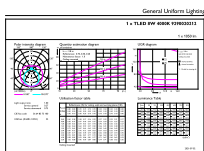
Full product code	871869964681300
Order product name	MAS LEDtube VLE 600mm HO 8W 840 T8
Order code	929002021202
Numerator - Quantity Per Pack	1
Numerator - Packs per outer box	10
Material Nr. (12NC)	929002021202
Full product name	MAS LEDtube VLE 600mm HO 8W 840 T8
EAN/UPC - Case	8718699646820
EAN/UPC - Product/Case	8718699646813

## Dimensional drawing



Product	D1	D2	A1	A2	A3
MAS LEDtube VLE 600mm HO 8W 840 T8	25.8 mm	28 mm	588.6 mm	595.7 mm	602.8 mm

## Photometric data

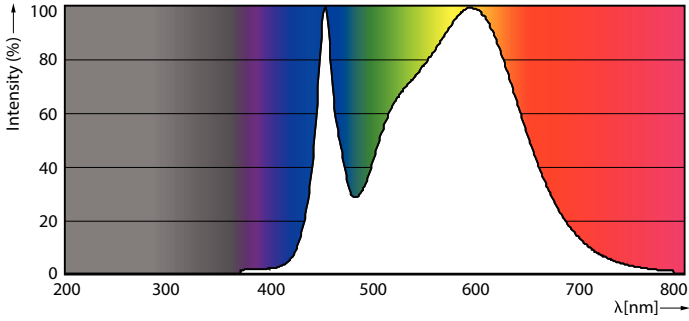


General uniform lighting - MAS LEDtube VLE 600mm HO 8W 840 T8

Light Distribution Diagram - MAS LEDtube VLE 600mm HO 8W 840 T8

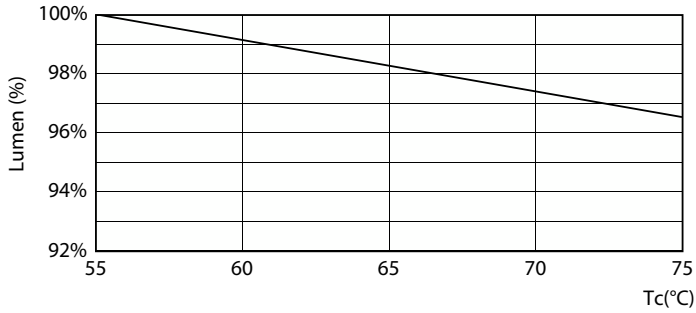
# MASTER Value LEDtube T8

## Photometric data

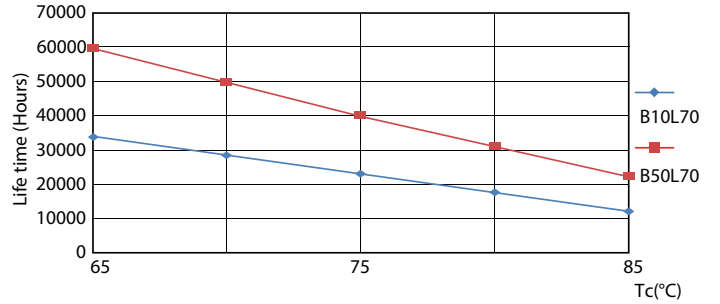


Spectral Power Distribution Colour - MAS LEDtube VLE 600mm HO 8W 840 T8

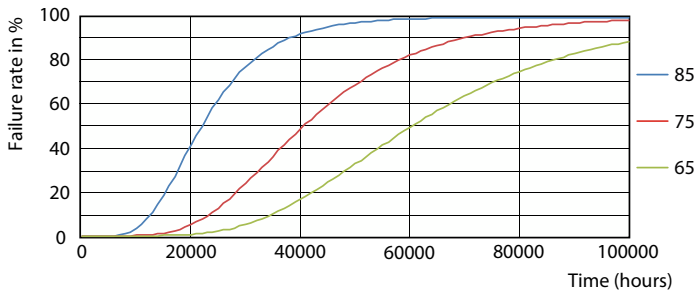
## Lifetime



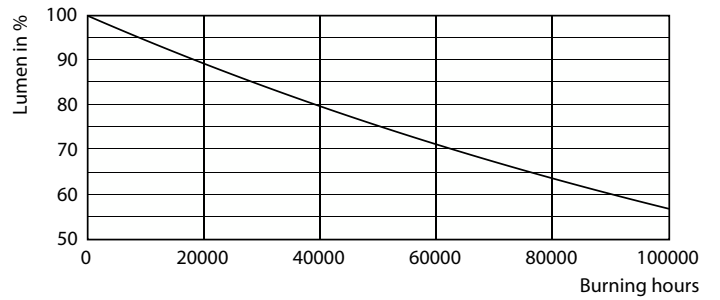
Lumen Maintenance Diagram - MAS LEDtube VLE 600mm HO 8W 840 T8



Life Expectancy Diagram - MAS LEDtube VLE 600mm HO 8W 840 T8



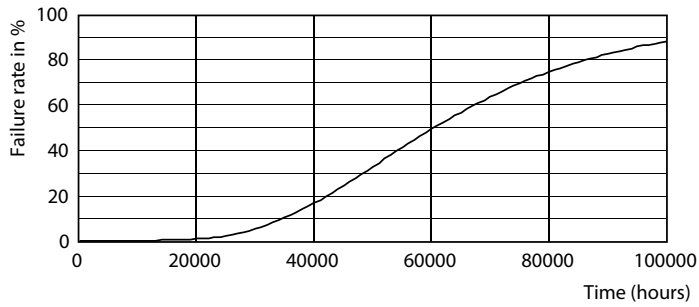
Life Expectancy Diagram - MAS LEDtube VLE 600mm HO 8W 840 T8



Lumen Maintenance Diagram - MAS LEDtube VLE 600mm HO 8W 840 T8

# MASTER Value LEDtube T8

## Lifetime



Life Expectancy Diagram - MAS LEDtube VLE 600mm HO 8W 840 T8

