

T8

15.5T8/MAS/48-840/IF25/P/DIM 25/1

Our TLEDs are available in InstantFit (Type A / Type C) or MainsFit (Ballast bypass / Type B) versions. The InstantFit lamps work on a broad variety of ballasts and LED drivers. Only InstantFit has over 15,000 lamp & ballast combinations delivering even light output, energy savings and a long lifetime. Our MainsFit products feature a double-ended design, simplifying installation while a proprietary safety circuit minimizes a shock risk. Lamp sizes range from 2-foot to 8-foot and U-bend with a variety of lumen outputs.

Product data

General Information	
Cap-Base	G13 [Medium Bi-Pin Fluorescent]
EU RoHS compliant	Yes
Nominal Lifetime (Nom)	70000 h
Switching Cycle	50000X
Light Technical	
Color Code	840 [CCT of 4000K]
Beam Angle (Nom)	180 °
Luminous Flux (Nom)	2500 lm
Color Designation	Cool White (CW)
Correlated Color Temperature (Nom)	4000 K
Luminous Efficacy (rated) (Nom)	161.00 lm/W
Color Consistency	<6
Color Rendering Index (Nom)	80
LLMF At End Of Nominal Lifetime (Nom)	70 %
Operating and Electrical	
Input Frequency	50 to 60 Hz
Power (Nom)	15.5 W

Starting Time (Nom)	0.5 s
Warm Up Time to 60% Light (Nom)	0.5 s
UL Type	Type A - works on ballast
Power Factor (Nom)	0.9
Voltage (Nom)	120-277 V

Temperature	
T-Ambient (Max)	55 °C
T-Ambient (Min)	-20 °C
T-Storage (Max)	65 °C
T-Storage (Min)	-40 °C
T-Case Maximum (Nom)	50 °C

Controls and Dimming	
Dimmable	Yes

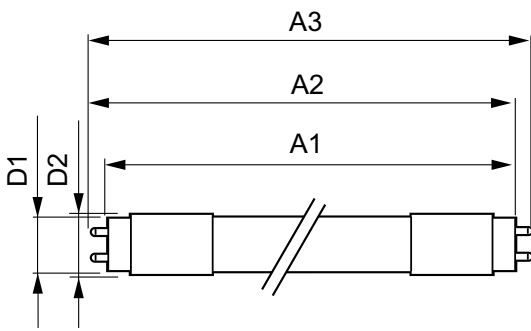
Mechanical and Housing	
Bulb Material	Plastic
Product Length	1200 mm

T8

Bulb Shape	Tube, double-ended
Approval and Application	
Energy Saving Product	Yes
Approval Marks	RoHS compliance UL certificate DLC compliance
Energy Consumption kWh/1000 h	- kWh
Product Data	
Order product name	15.5T8/MAS/48-840/IF25/P/DIM 25/1

EAN/UPC - Product	046677545192
Order code	929002016404
Numerator - Quantity Per Pack	1
Numerator - Packs per outer box	25
Material Nr. (12NC)	929002016404
Net Weight (Piece)	0.230 kg

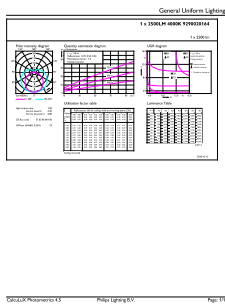
Dimensional drawing



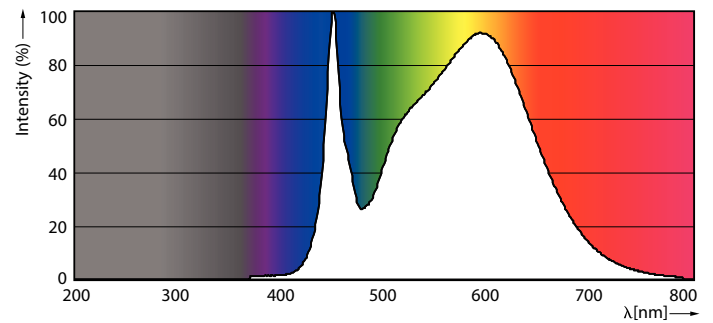
TLED 1200mmT8 120-277 15.5W 2500lm 4000K

Product	D1	D2	A1	A2	A3
15.5T8/MAS/48-840/ IF25/P/DIM 25/1	25.7 mm	28 mm	1198.1 mm	1205.2 mm	1212.3 mm

Photometric data



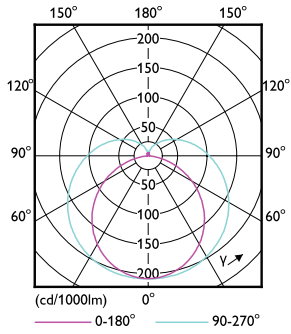
LEDtube 15,5W G13 T8 840



LEDtube 15,5W G13 T8 840

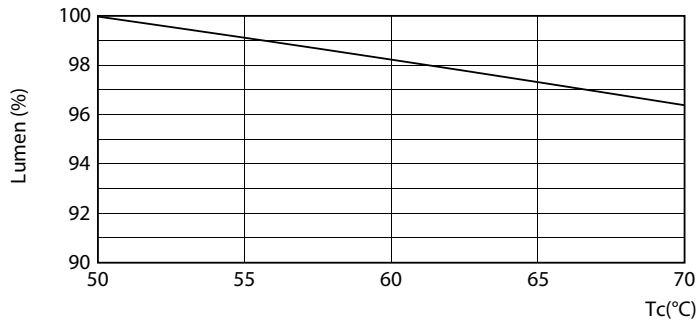
T8

Photometric data

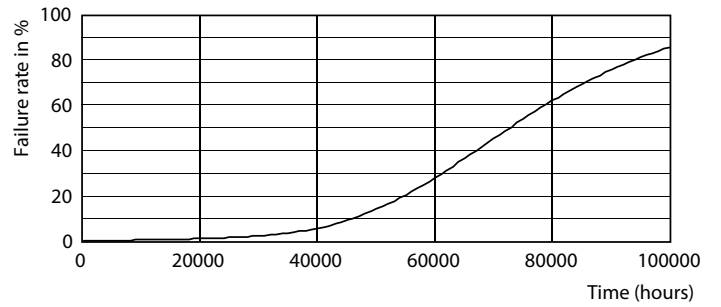


LEDtube 15,5W G13 T8

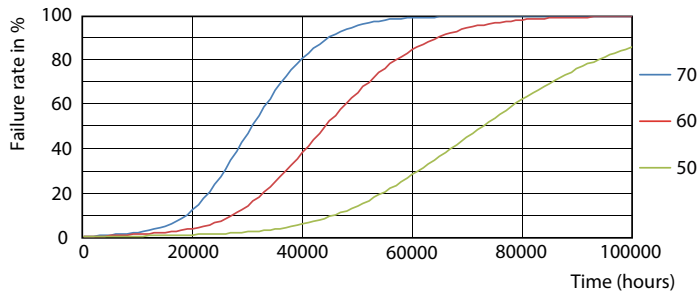
Lifetime



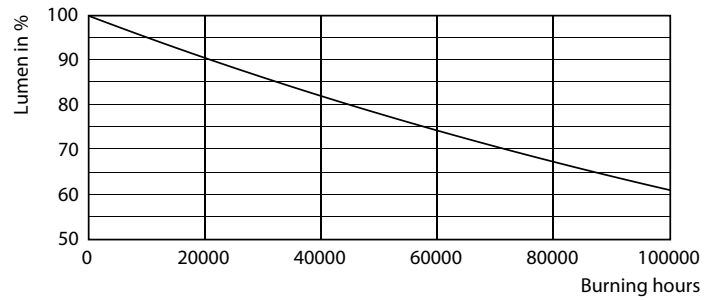
LEDtube 15,5W G13 T8 LumenVsTc



LEDtube 15,5W G13 T8



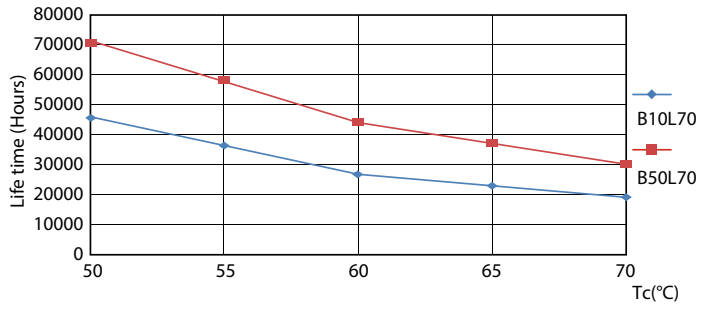
LEDtube 15,5W G13 T8 FailureRate



LEDtube 15,5W G13 T8

T8

Lifetime



LEDtube 15,5W G13 T8 LifetimeVsTc

