



T8

44T8HO/COR/96-850/MF54/G/R17d 10/1

Our TLEDs are available in InstantFit (Type A / Type C) or MainsFit (Ballast bypass / Type B) versions. The InstantFit lamps work on a broad variety of ballasts and LED drivers. Only InstantFit has over 15,000 lamp & ballast combinations delivering even light output, energy savings and a long lifetime. Our MainsFit products feature a double-ended design, simplifying installation while a proprietary safety circuit minimizes a shock risk. Lamp sizes range from 2-foot to 8-foot and U-bend with a variety of lumen outputs.

Product data

General Information	
Cap-Base	R17D [R17d (RDC)]
EU RoHS compliant	Yes
Nominal Lifetime (Nom)	50000 h
Switching Cycle	50000X
Light Technical	
Color Code	850 [CCT of 5000K]
Beam Angle (Nom)	240 °
Luminous Flux (Nom)	5400 lm
Color Designation	Daylight
Correlated Color Temperature (Nom)	5000 K
Luminous Efficacy (rated) (Nom)	122.00 lm/W
Color Consistency	<5
Color Rendering Index (Nom)	82
LLMF At End Of Nominal Lifetime (Nom)	70 %
Operating and Electrical	
Input Frequency	50 to 60 Hz
Power (Nom)	44 W

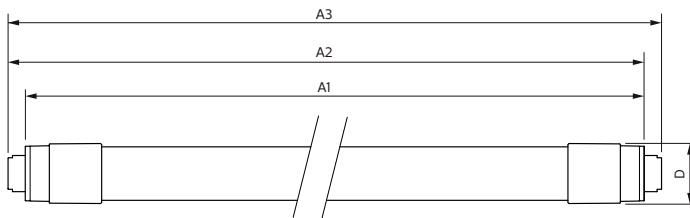
Lamp Current (Max)	375 mA
Lamp Current (Min)	168 mA
Starting Time (Nom)	0.5 s
Warm Up Time to 60% Light (Nom)	0.5 s
UL Type	Type B - bypass the ballast
Power Factor (Nom)	0.9
Voltage (Nom)	120-277 V
Temperature	
T-Ambient (Max)	45 °C
T-Ambient (Min)	-20 °C
T-Storage (Max)	65 °C
T-Storage (Min)	-40 °C
T-Case Maximum (Nom)	55 °C
Controls and Dimming	
Dimmable	No
Mechanical and Housing	
Bulb Material	Glass

T8

Product Length	2400 mm
Approval and Application	
Energy Efficiency Label (EEL)	Not applicable
Energy Saving Product	Yes
Approval Marks	RoHS compliance UL certificate DLC compliance
Energy Consumption kWh/1000 h	- kWh
Product Data	
Order product name	44T8HO/COR/96-850/MF54/G/R17d 10/1

EAN/UPC - Product	046677545291
Order code	929002014304
Numerator - Quantity Per Pack	1
Numerator - Packs per outer box	10
Material Nr. (12NC)	929002014304
Net Weight (Piece)	0.740 kg

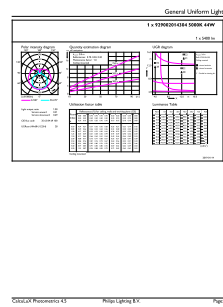
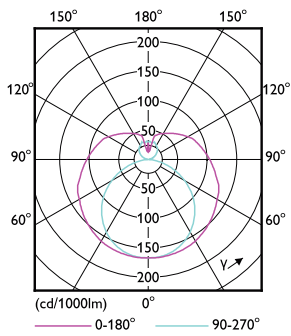
Dimensional drawing



Product	D1	D2	A1	A2	A3
44T8HO/COR/96-850/ MF54/G/R17d 10/1	28 mm	27.8 mm	2369.8 mm	2378.7 mm	2387.8 mm

TLED MF CorePro 8ft 5400lm R17d 5000K

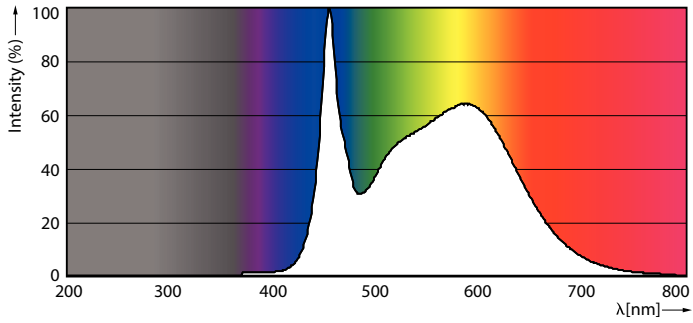
Photometric data



LEDtube FA8 4000K 240D

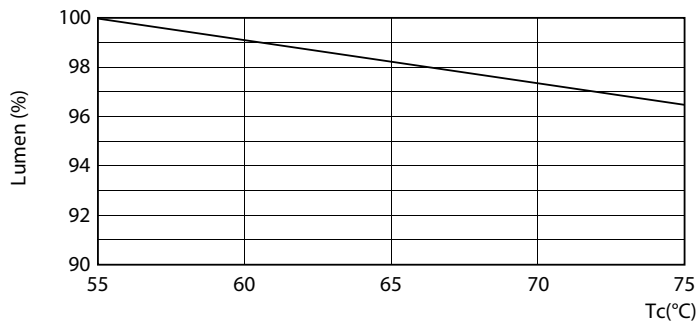
LEDtube R17D 5000K 240D

Photometric data

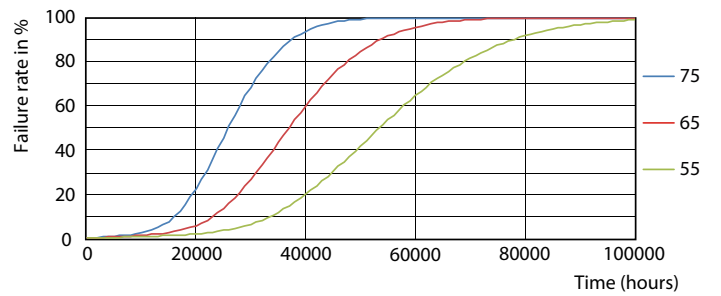


LEDtube FA8 5000K 240D

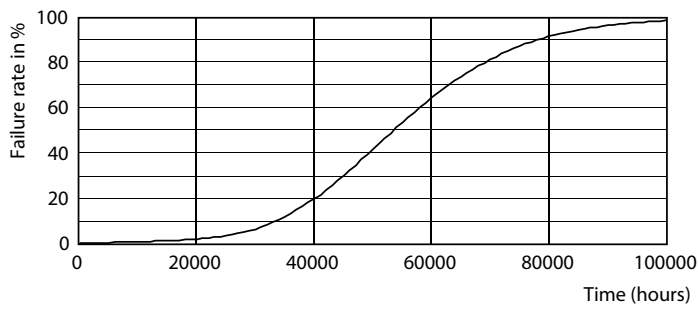
Lifetime



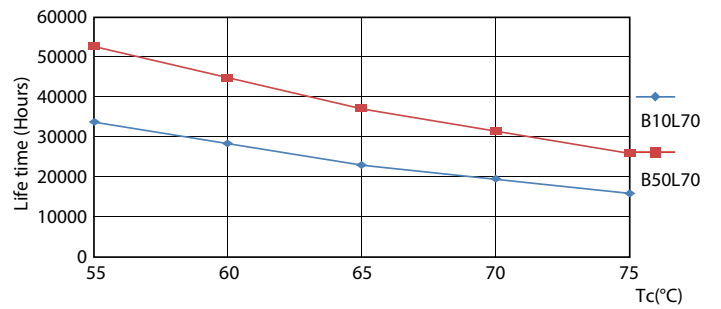
LEDtube R17D 4000K 240D LumenVsTc



LEDtube R17D 4000K 240D FailureRate



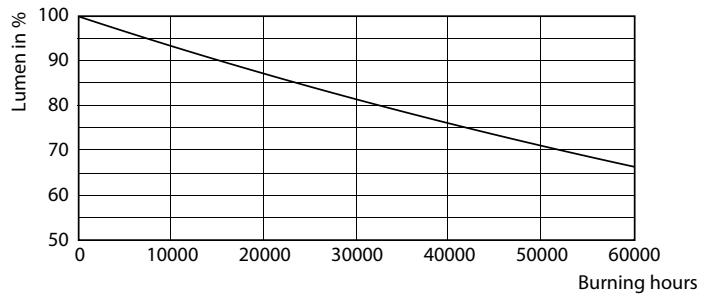
LEDtube FA8 4000K 240D



LEDtube R17D 4000K 240D LifetimeVsTc

T8

Lifetime



LEDtube FA8 4000K 240D

