



T8

34T8/COR/96-840/MF42/G/FA8 10/1

Our TLEDs are available in InstantFit (Type A / Type C) or MainsFit (Ballast bypass / Type B) versions. The InstantFit lamps work on a broad variety of ballasts and LED drivers. Only InstantFit has over 15,000 lamp & ballast combinations delivering even light output, energy savings and a long lifetime. Our MainsFit products feature a double-ended design, simplifying installation while a proprietary safety circuit minimizes a shock risk. Lamp sizes range from 2-foot to 8-foot and U-bend with a variety of lumen outputs.

Product data

General Information	
Cap-Base	FA8 [FA8]
EU RoHS compliant	Yes
Nominal Lifetime (Nom)	50000 h
Switching Cycle	50000X
Light Technical	
Color Code	840 [CCT of 4000K]
Beam Angle (Nom)	240 °
Luminous Flux (Nom)	4200 lm
Color Designation	Cool White (CW)
Correlated Color Temperature (Nom)	4000 K
Luminous Efficacy (rated) (Nom)	123.00 lm/W
Color Consistency	<6
Color Rendering Index (Nom)	82
LLMF At End Of Nominal Lifetime (Nom)	70 %
Operating and Electrical	
Input Frequency	50 to 60 Hz
Power (Nom)	34 W

Lamp Current (Max)	290 mA
Lamp Current (Min)	133 mA
Starting Time (Nom)	0.5 s
Warm Up Time to 60% Light (Nom)	0.5 s
UL Type	Type B - bypass the ballast
Power Factor (Nom)	0.9
Voltage (Nom)	120-277 V
Temperature	
T-Ambient (Max)	45 °C
T-Ambient (Min)	-20 °C
T-Storage (Max)	65 °C
T-Storage (Min)	-40 °C
T-Case Maximum (Nom)	45 °C
Controls and Dimming	
Dimmable	No
Mechanical and Housing	
Bulb Material	Glass

T8

Product Length	2400 mm
Bulb Shape	Tube, double-ended

Approval and Application

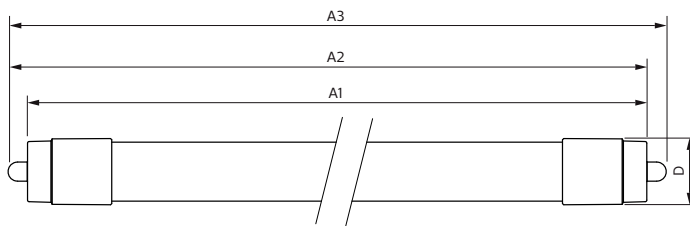
Energy Saving Product	Yes
Approval Marks	RoHS compliance UL certificate DLC compliance
Energy Consumption kWh/1000 h	- kWh

Product Data

Order product name	34T8/COR/96-840/MF42/G/FA8 10/1
--------------------	---------------------------------

EAN/UPC - Product	046677545260
Order code	929002014004
Numerator - Quantity Per Pack	1
Numerator - Packs per outer box	10
Material Nr. (12NC)	929002014004
Net Weight (Piece)	0.740 kg

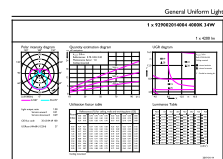
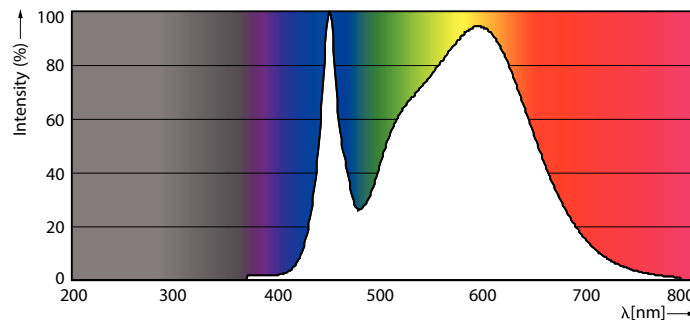
Dimensional drawing



Product	D1	D2	A1	A2	A3
34T8/COR/96-840/ MF42/G/FA8 10/1	28 mm	27.9 mm	2369.8 mm	2378.7 mm	2387.8 mm

TLED MF CorePro 8ft 4200lm FA8 4000K

Photometric data

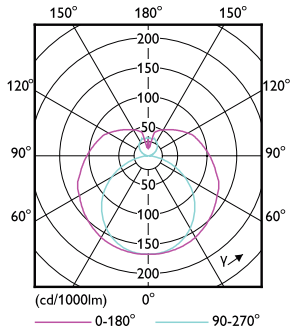


©2021 Philips Lighting B.V. Philips Lighting B.V. Page 1/1

LEDtube FA8 4000K 240D

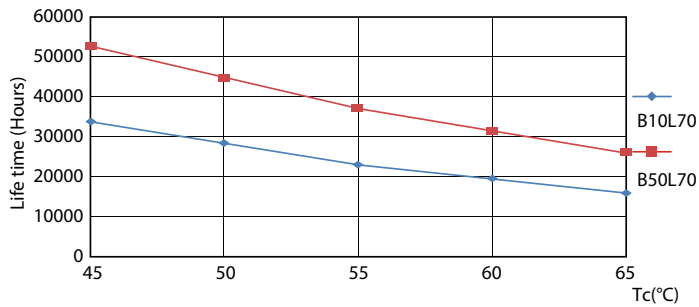
LEDtube FA8 4000K 240D

Photometric data

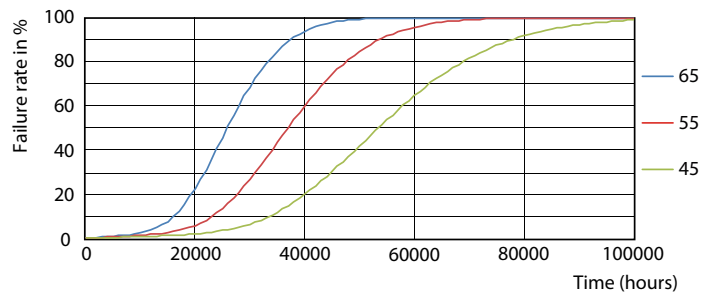


LEDtube FA8 4000K 240D

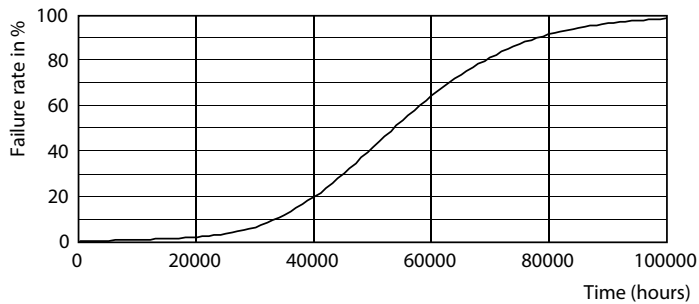
Lifetime



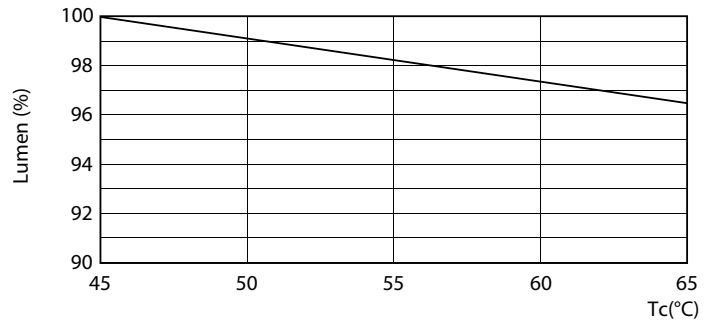
LEDtube FA8 4000K 240D LifetimeVsTc



LEDtube FA8 4000K 240D FailureRate



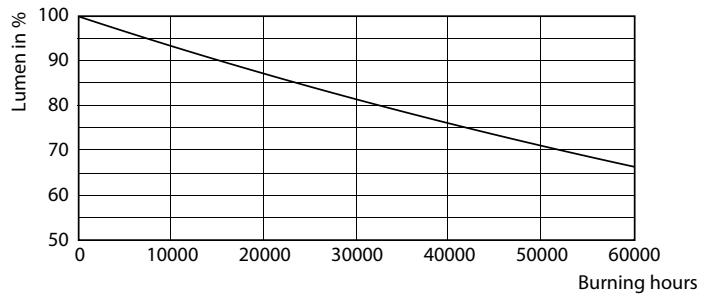
LEDtube FA8 4000K 240D



LEDtube FA8 4000K 240D LumenVsTc

T8

Lifetime



LEDtube FA8 4000K 240D

