



CorePro MainsFit (UL Type-B) T8

15.5T8-6U/COR/24-830/MF20/G 10/1

The CorePro MainsFit (UL Type B) lamps are designed to be the perfect retrofit solution to move from traditional fluorescent lamps to energy saving LEDs. This ballast bypass lamp has everything needed built into the lamp with proven energy savings, long life (up to 50k hours), surge suppression and industry leading safety features. All lamps in the CorePro MainsFit family are double-ended to help simplify the installation. In addition, all lamps meet the Philips standards for light quality so that end users will be in a comfortable environment regardless of the CorePro MainsFit lamp type.

Product data

General Information		LLMF At End Of Nominal Lifetime (Nom) 70 %	
Cap-Base	2G13 [2G13]		
Nominal lifetime	50,000 hour(s)		
Switching Cycle	50,000		
Lighting Technology	LED		
EU RoHS compliant	Yes		
Light Technical		Operating and Electrical	
Color Code	830 [CCT of 3000K]	Line Frequency	50 to 60 Hz
Beam Angle (Nom)	180 degree(s)	Input Frequency	50 to 60 Hz
Luminous Flux	2,000 lumen	Power Consumption	15.5 W
Color Designation	White (WH)	Wattage Equivalent	32 W
Correlated Color Temperature (Nom)	3000 K	Starting Time (Nom)	0.9 s
Luminous Efficacy (rated) (Nom)	129.00 lm/W	Warm-up time to 60% light	0.9 s
Color Consistency	<6	Power Factor (Fraction)	0.9
Color rendering index (CRI)	82	Voltage (Nom)	120-277 V
		Temperature	
		Ambient temperature range	-20 °C to 45 °C
		T-Case Maximum (Nom)	51 °C

CorePro MainsFit (UL Type-B) T8

Controls and Dimming

Dimmable	No
----------	----

Mechanical and Housing

Bulb Finish	Frosted
Bulb Material	Glass
Product Length	600 mm
Bulb Shape	Tube, double-ended

Approval and Application

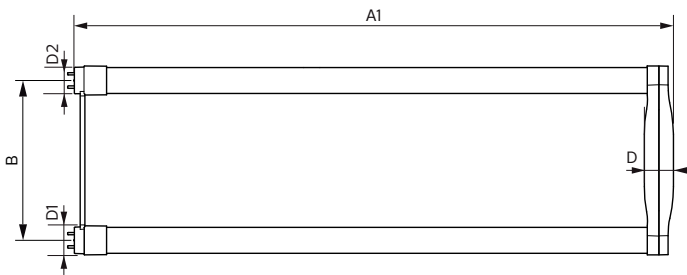
Energy Saving Product	Yes
Approval Marks	UL certificate RoHS compliance DLC compliance

Energy Consumption kWh/1000 h	- kWh
Energy Certifications	DLC Standard

Product Data

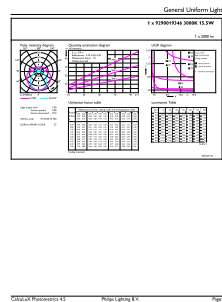
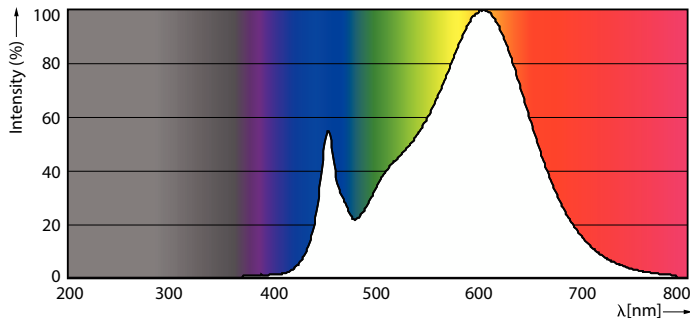
Order product name	15.5T8-6U/COR/24-830/MF20/G 10/1
Order code	929001934604
Numerator - Quantity Per Pack	1
Numerator - Packs per outer box	10
Material Nr. (12NC)	929001934604
Full product name	15.5T8-6U/COR/24-830/MF20/G 10/1
EAN/UPC - Case	50046677535532

Dimensional drawing



Product	D1	D2	B	A1	D
15.5T8-6U/COR/24-830/MF20/G 10/1	25.7 mm	28.1 mm	152 mm	570 mm	27.9 mm

Photometric data

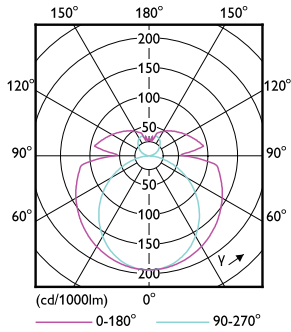


Spectral Power Distribution Colour - 15.5T8-6U/COR/24-830/MF20/G 10/1

General uniform lighting - 15.5T8-6U/COR/24-830/MF20/G 10/1

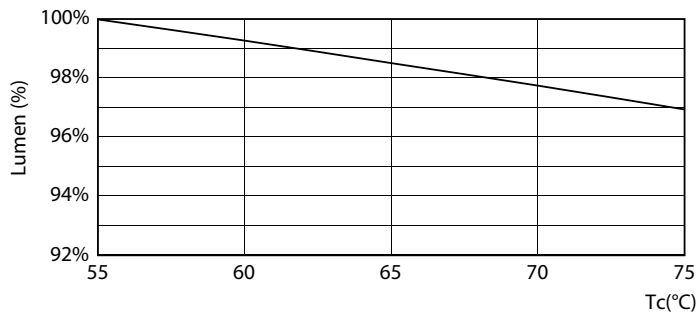
CorePro MainsFit (UL Type-B) T8

Photometric data

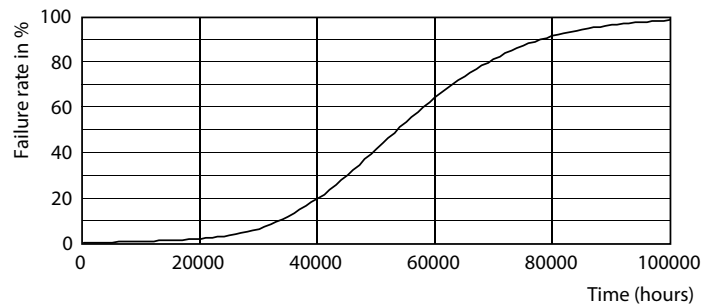


Light Distribution Diagram - 15.5T8-6U/COR/24-830/MF20/G 10/1

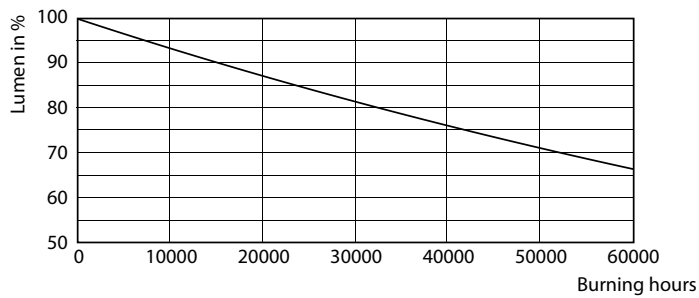
Lifetime



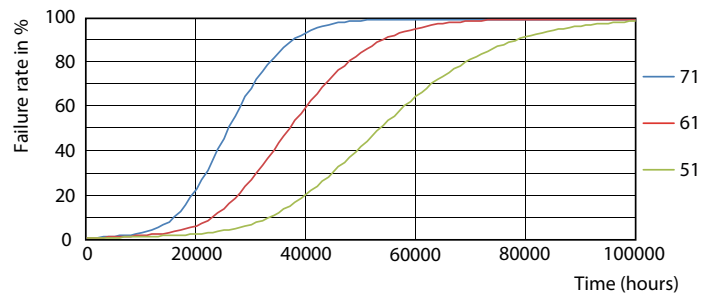
Lumen Maintenance Diagram - 15.5T8-6U/COR/24-830/MF20/G 10/1



Life Expectancy Diagram - 15.5T8-6U/COR/24-830/MF20/G 10/1



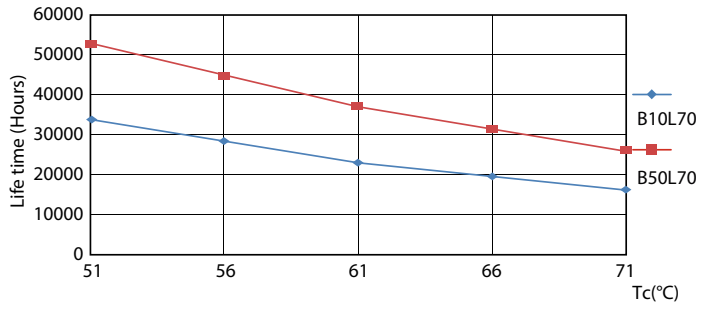
Lumen Maintenance Diagram - 15.5T8-6U/COR/24-830/MF20/G 10/1



Life Expectancy Diagram - 15.5T8-6U/COR/24-830/MF20/G 10/1

CorePro MainsFit (UL Type-B) T8

Lifetime



Life Expectancy Diagram - 15.5T8-6U/COR/24-830/MF20/G 10/1

