

T8

11.5T8/COR/36-835/MF13/G 10/1

Our TLEDs are available in InstantFit (Type A / Type C) or MainsFit (Ballast bypass / Type B) versions. The InstantFit lamps work on a broad variety of ballasts and LED drivers. Only InstantFit has over 15,000 lamp & ballast combinations delivering even light output, energy savings and a long lifetime. Our MainsFit products feature a double-ended design, simplifying installation while a proprietary safety circuit minimizes a shock risk. Lamp sizes range from 2-foot to 8-foot and U-bend with a variety of lumen outputs.

Product data

General information		Power (Nom)	
Cap-Base	G13 [Medium Bi-Pin Fluorescent]	Power (Nom)	11.5 W
EU RoHS compliant	Yes	Lamp Current (Max)	101 mA
Nominal Lifetime (Nom)	50000 h	Lamp Current (Min)	47 mA
Switching Cycle	50000	Wattage Equivalent	25 W
Tier	CorePro	Starting Time (Nom)	0.9 s
Light technical		Warm Up Time to 60% Light (Nom)	0.9 s
Color Code	835 [CCT of 3500K]	UL Type	Type B - bypass the ballast
Beam Angle (Nom)	180 °	Power Factor (Nom)	0.9
Luminous Flux (Nom)	1300 lm	Voltage (Nom)	120-277 V
Color Designation	White (WH)	Temperature	
Correlated Color Temperature (Nom)	3500 K	T-Ambient (Max)	45 °C
Luminous Efficacy (rated) (Nom)	113.00 lm/W	T-Ambient (Min)	-20 °C
Color Consistency	<6	T-Storage (Max)	65 °C
Color Rendering Index (Nom)	82	T-Storage (Min)	-40 °C
LLMF At End Of Nominal Lifetime (Nom)	70 %	T-Case Maximum (Nom)	50 °C
Operating and electrical		Controls and dimming	
Input Frequency	50 to 60 Hz	Dimmable	No

T8

Mechanical and housing

Bulb Finish	Frosted
Bulb Material	Glass
Product Length	900 mm
Bulb Shape	Tube, double-ended

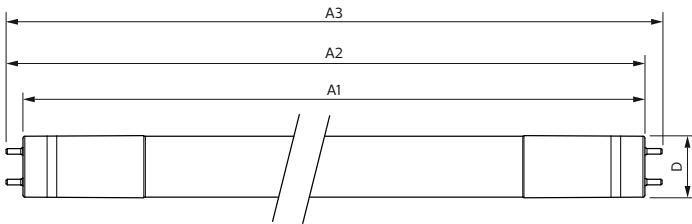
Approval and application

Energy Saving Product	Yes
Approval Marks	UL certificate RoHS compliance DLC compliance
Energy Consumption kWh/1000 h	- kWh
Energy Certifications	DLC Standard

Product data

Order product name	11.5T8/COR/36-835/MF13/G 10/1
EAN/UPC - Product	046677535506
Order code	929001934304
Numerator - Quantity Per Pack	1
Numerator - Packs per outer box	10
Material Nr. (12NC)	929001934304
Net Weight (Piece)	0.250 kg

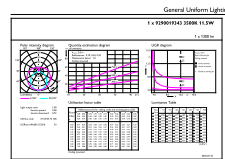
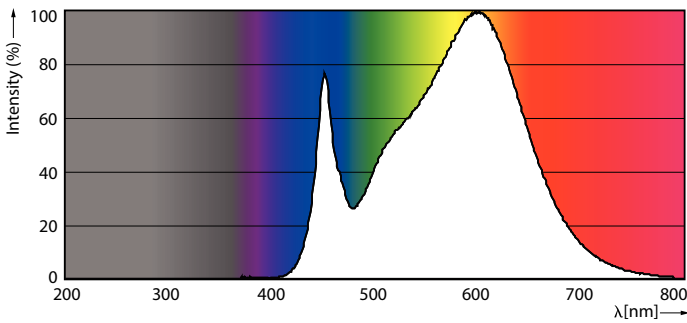
Dimensional drawing



Product	D	A1	A2	A3
11.5T8/COR/36-835/MF13/G 10/1	25.9 mm	894.3 mm	900.5 mm	908.8 mm

11.5T8/COR/36-835/MF13/G 10/1

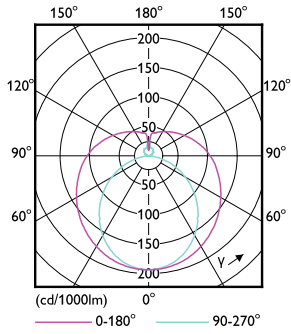
Photometric data



11-5W G13

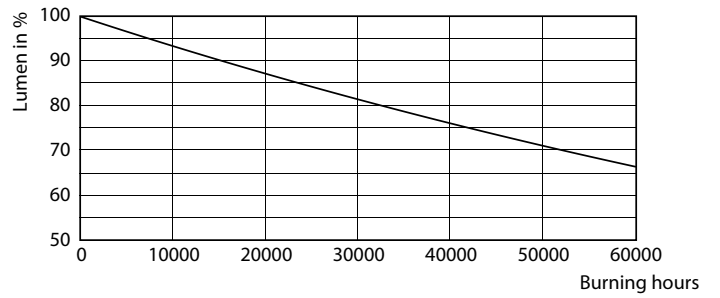
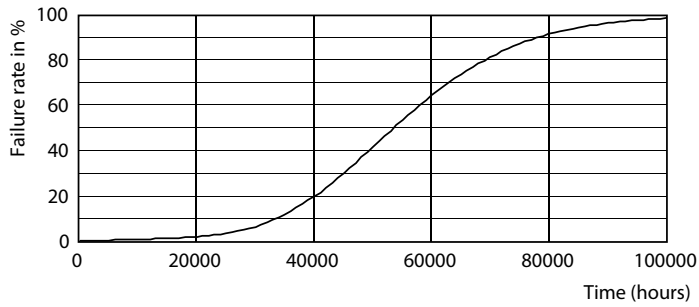
11-5W G13 835 3500K

Photometric data



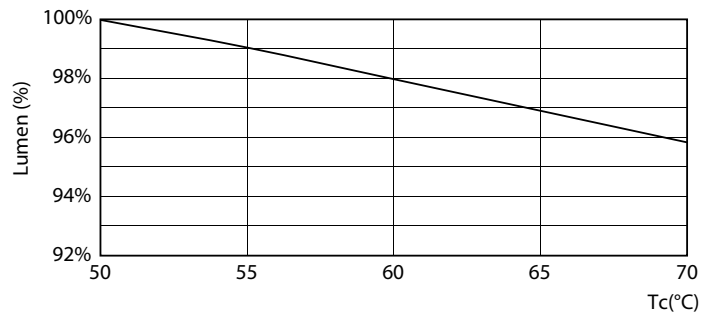
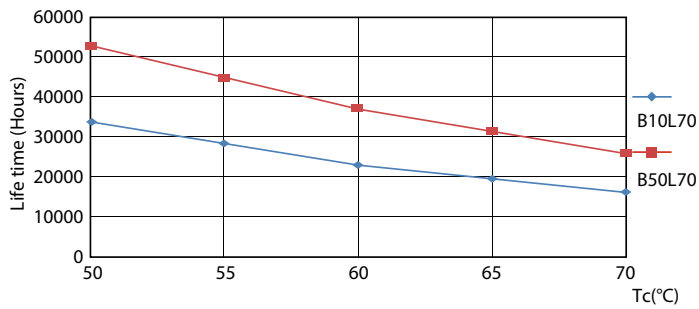
11.5W G13 840

Lifetime



8.5W G13

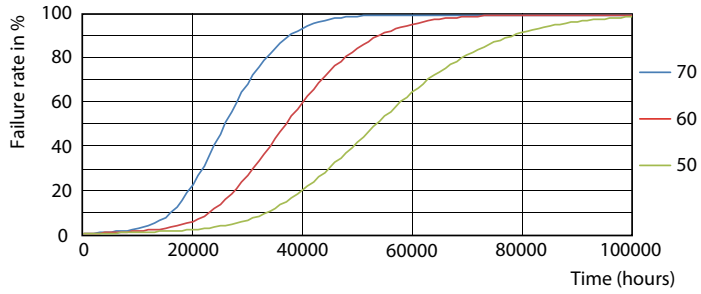
8.5W G13



8.5W G13

11.5W

Lifetime



8.5W G13

