



T8

8.5T8/COR/24-840/MF11/G 10/1

Our TLEDs are available in InstantFit (Type A / Type C) or MainsFit (Ballast bypass / Type B) versions. The InstantFit lamps work on a broad variety of ballasts and LED drivers. Only InstantFit has over 15,000 lamp & ballast combinations delivering even light output, energy savings and a long lifetime. Our MainsFit products feature a double-ended design, simplifying installation while a proprietary safety circuit minimizes a shock risk. Lamp sizes range from 2-foot to 8-foot and U-bend with a variety of lumen outputs.

Product data

General Information	
Cap-Base	G13 [Medium Bi-Pin Fluorescent]
EU RoHS compliant	Yes
Nominal Lifetime (Nom)	50000 h
Switching Cycle	50000X
Light Technical	
Color Code	840 [CCT of 4000K]
Beam Angle (Nom)	180 °
Luminous Flux (Nom)	1150 lm
Color Designation	Cool White (CW)
Correlated Color Temperature (Nom)	4000 K
Luminous Efficacy (rated) (Nom)	135.00 lm/W
Color Consistency	<6
Color Rendering Index (Nom)	82
LLMF At End Of Nominal Lifetime (Nom)	70 %
Operating and Electrical	
Input Frequency	50 to 60 Hz
Power (Nom)	8.5 W

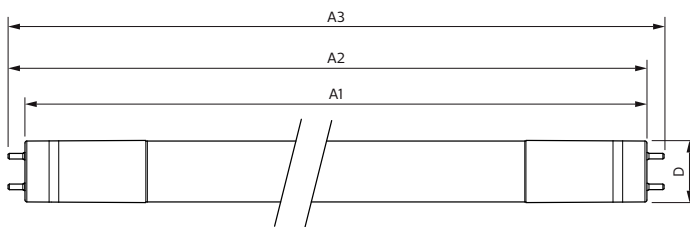
Lamp Current (Max)	75 mA
Lamp Current (Min)	36 mA
Starting Time (Nom)	0.9 s
Warm Up Time to 60% Light (Nom)	0.9 s
UL Type	Type B - bypass the ballast
Power Factor (Nom)	0.9
Voltage (Nom)	120-277 V
Temperature	
T-Ambient (Max)	45 °C
T-Ambient (Min)	-20 °C
T-Storage (Max)	65 °C
T-Storage (Min)	-40 °C
T-Case Maximum (Nom)	50 °C
Controls and Dimming	
Dimmable	No
Mechanical and Housing	
Bulb Material	Glass

T8

Product Length	600 mm
Bulb Shape	Tube, double-ended
Approval and Application	
Energy Saving Product	Yes
Approval Marks	UL certificate RoHS compliance DLC compliance
Energy Consumption kWh/1000 h	- kWh
Energy Certifications	DLC Standard

Product Data	
Order product name	8.5T8/COR/24-840/MF11/G 10/1
EAN/UPC - Product	046677535476
Order code	929001934004
Numerator - Quantity Per Pack	1
Numerator - Packs per outer box	10
Material Nr. (12NC)	929001934004
Net Weight (Piece)	0.200 kg

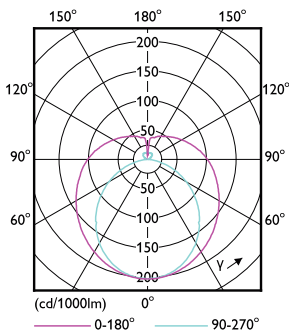
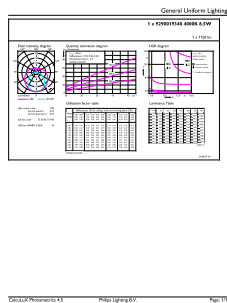
Dimensional drawing



Product	D	A1	A2	A3
8.5T8/COR/24-840/MF11/G 10/1	25.9 mm	589.5 mm	595.7 mm	604 mm

TLED MF CorePro 2ft 1100lm 4000K

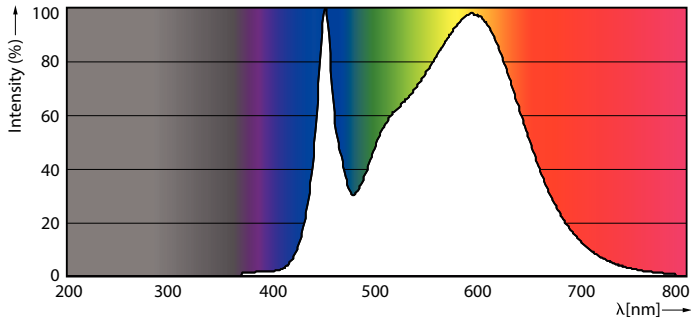
Photometric data



8.5W G13

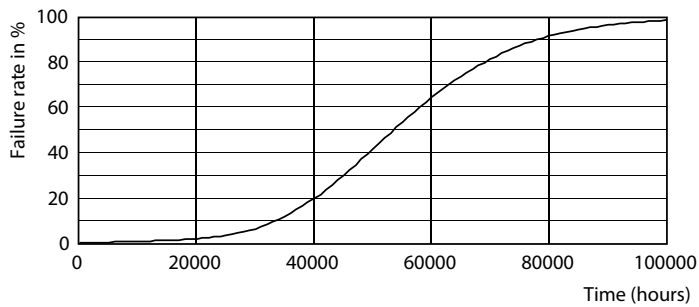
8.5W G13 840

Photometric data

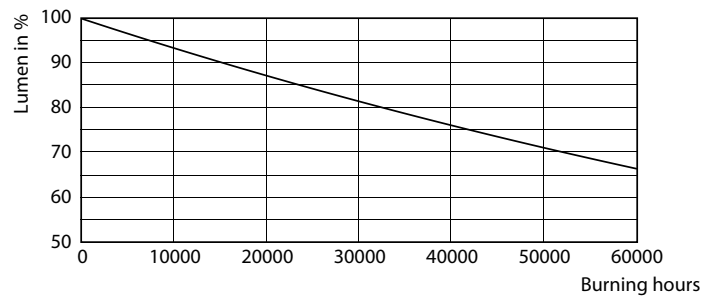


8.5W G13

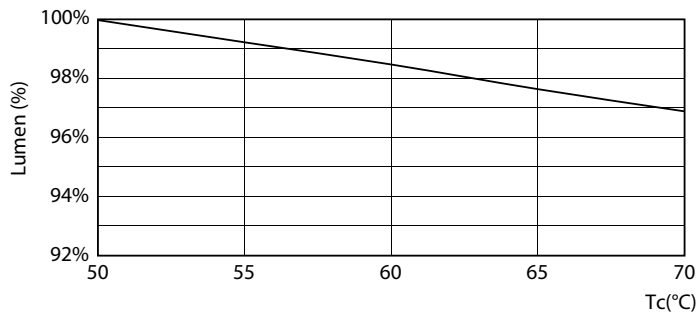
Lifetime



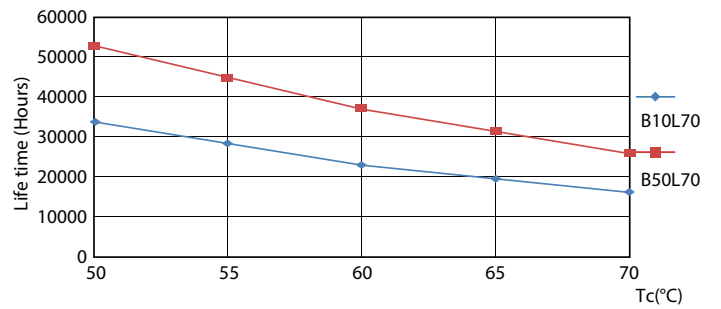
8.5W G13



8.5W G13



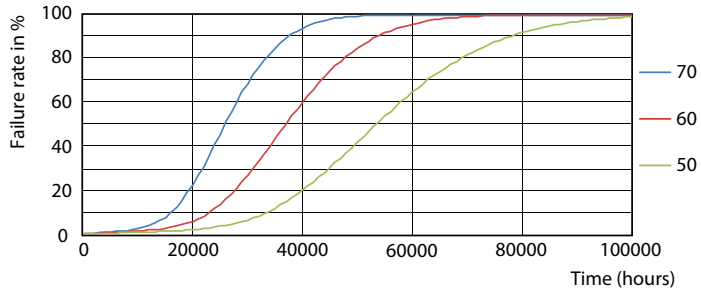
8.5W G13



8.5W G13

T8

Lifetime



8.5W G13

