



# T8

## 8.5T8/COR/24-835/MF11/G 10/1

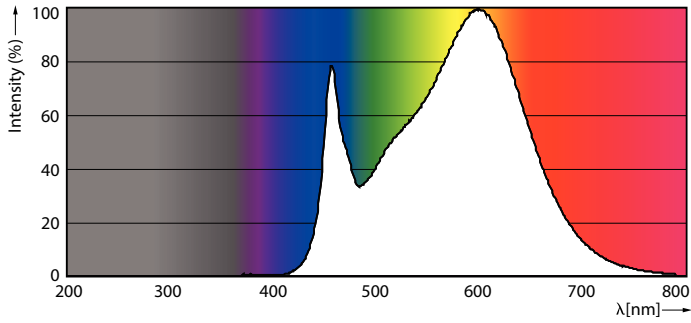
Our TLEDs are available in InstantFit (Type A / Type C) or MainsFit (Ballast bypass / Type B) versions. The InstantFit lamps work on a broad variety of ballasts and LED drivers. Only InstantFit has over 15,000 lamp & ballast combinations delivering even light output, energy savings and a long lifetime. Our MainsFit products feature a double-ended design, simplifying installation while a proprietary safety circuit minimizes a shock risk. Lamp sizes range from 2-foot to 8-foot and U-bend with a variety of lumen outputs.

### Product data

General information		Lamp Current (Max)		75 mA
Cap-Base	G13 [ Medium Bi-Pin Fluorescent]	Lamp Current (Min)	36 mA	
EU RoHS compliant	Yes	Starting Time (Nom)	0.9 s	
Nominal Lifetime (Nom)	50000 h	Warm Up Time to 60% Light (Nom)	0.9 s	
Switching Cycle	50000X	UL Type	Type B - bypass the ballast	
Light technical		Power Factor (Nom)	0.9	
Color Code	835 [ CCT of 3500K]	Voltage (Nom)	120-277 V	
Beam Angle (Nom)	180 °	Temperature		
Luminous Flux (Nom)	1100 lm	T-Ambient (Max)	45 °C	
Color Designation	White (WH)	T-Ambient (Min)	-20 °C	
Correlated Color Temperature (Nom)	3500 K	T-Storage (Max)	65 °C	
Luminous Efficacy (rated) (Nom)	129.00 lm/W	T-Storage (Min)	-40 °C	
Color Consistency	<6	T-Case Maximum (Nom)	50 °C	
Color Rendering Index (Nom)	82	Controls and dimming		
LLMF At End Of Nominal Lifetime (Nom)	70 %	Dimmable	No	
Operating and electrical		Mechanical and housing		
Input Frequency	50 to 60 Hz	Bulb Material	Glass	
Power (Nom)	8.5 W			

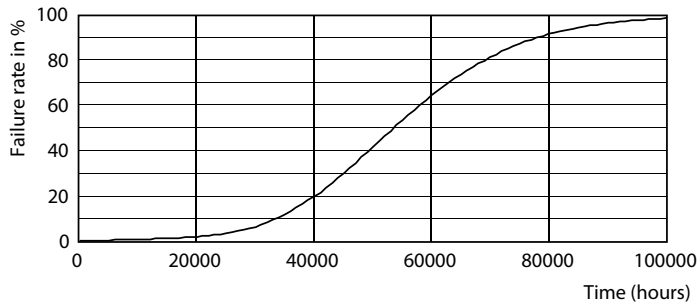


Photometric data

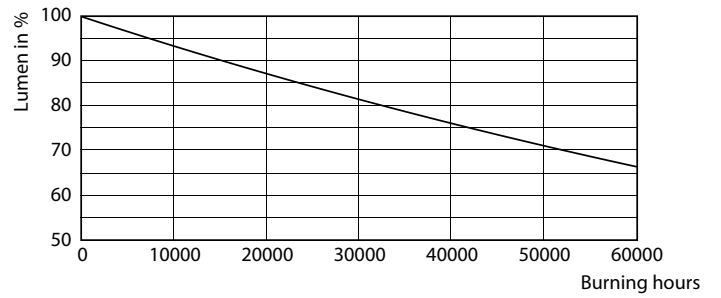


8-5W G13

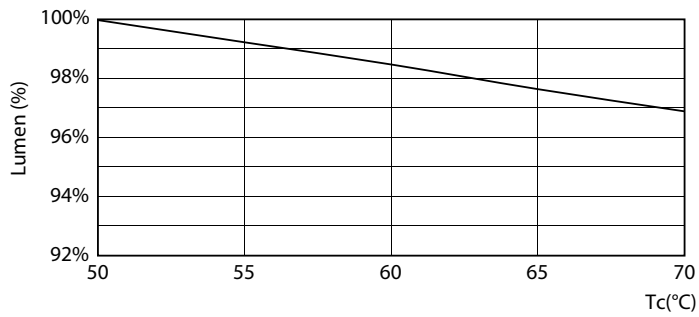
Lifetime



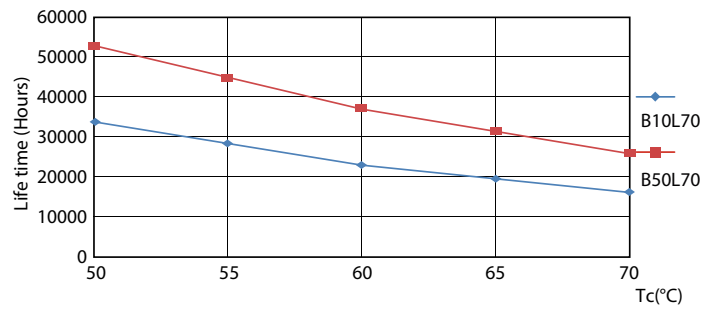
8.5W G13



8.5W G13



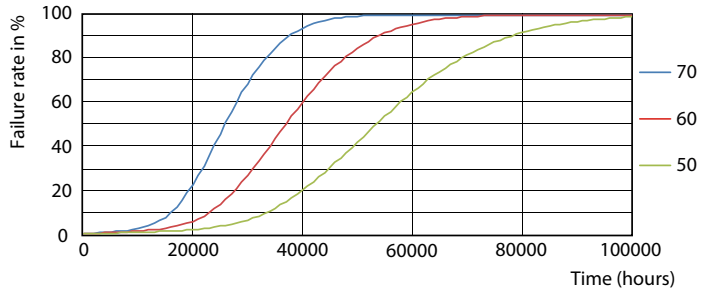
8.5W G13



8.5W G13

# T8

## Lifetime



8.5W G13

