



# T8

## 8.5T8/COR/24-830/MF11/G 10/1

Our TLEDs are available in InstantFit (Type A / Type C) or MainsFit (Ballast bypass / Type B) versions. The InstantFit lamps work on a broad variety of ballasts and LED drivers. Only InstantFit has over 15,000 lamp & ballast combinations delivering even light output, energy savings and a long lifetime. Our MainsFit products feature a double-ended design, simplifying installation while a proprietary safety circuit minimizes a shock risk. Lamp sizes range from 2-foot to 8-foot and U-bend with a variety of lumen outputs.

### Product data

| General Information                   |                                  |
|---------------------------------------|----------------------------------|
| Cap-Base                              | G13 [ Medium Bi-Pin Fluorescent] |
| EU RoHS compliant                     | Yes                              |
| Nominal Lifetime (Nom)                | 50000 h                          |
| Switching Cycle                       | 50000X                           |
| Light Technical                       |                                  |
| Color Code                            | 830 [ CCT of 3000K]              |
| Beam Angle (Nom)                      | 180 °                            |
| Luminous Flux (Nom)                   | 1100 lm                          |
| Color Designation                     | White (WH)                       |
| Correlated Color Temperature (Nom)    | 3000 K                           |
| Luminous Efficacy (rated) (Nom)       | 129.00 lm/W                      |
| Color Consistency                     | <6                               |
| Color Rendering Index (Nom)           | 82                               |
| LLMF At End Of Nominal Lifetime (Nom) | 70 %                             |
| Operating and Electrical              |                                  |
| Input Frequency                       | 50 to 60 Hz                      |
| Power (Nom)                           | 8.5 W                            |

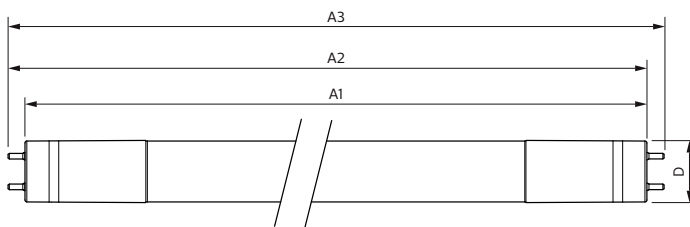
| Lamp Current (Max)              | 75 mA                       |
|---------------------------------|-----------------------------|
| Lamp Current (Min)              | 36 mA                       |
| Starting Time (Nom)             | 0.9 s                       |
| Warm Up Time to 60% Light (Nom) | 0.9 s                       |
| UL Type                         | Type B - bypass the ballast |
| Power Factor (Nom)              | 0.9                         |
| Voltage (Nom)                   | 120-277 V                   |
| Temperature                     |                             |
| T-Ambient (Max)                 | 45 °C                       |
| T-Ambient (Min)                 | -20 °C                      |
| T-Storage (Max)                 | 65 °C                       |
| T-Storage (Min)                 | -40 °C                      |
| T-Case Maximum (Nom)            | 50 °C                       |
| Controls and Dimming            |                             |
| Dimmable                        | No                          |
| Mechanical and Housing          |                             |
| Bulb Material                   | Glass                       |

# T8

|                                 |   |
|---------------------------------|---|
| Product Length                  | 600 mm  |
| <b>Approval and Application</b> |   |
| Energy Efficiency Label (EEL)   | Not applicable                                |
| Energy Saving Product           | Yes   |
| Approval Marks                  | UL certificate RoHS compliance DLC compliance |
| Energy Consumption kWh/1000 h   | - kWh   |
| Energy Certifications           | DLC Standard                                  |

|                                 |                              |
|---------------------------------|------------------------------|
| <b>Product Data</b>             |                              |
| Order product name              | 8.5T8/COR/24-830/MF11/G 10/1 |
| EAN/UPC - Product               | 046677535452                 |
| Order code                      | 929001933804                 |
| Numerator - Quantity Per Pack   | 1                            |
| Numerator - Packs per outer box | 10                           |
| Material Nr. (12NC)             | 929001933804                 |
| Net Weight (Piece)              | 0.200 kg                     |

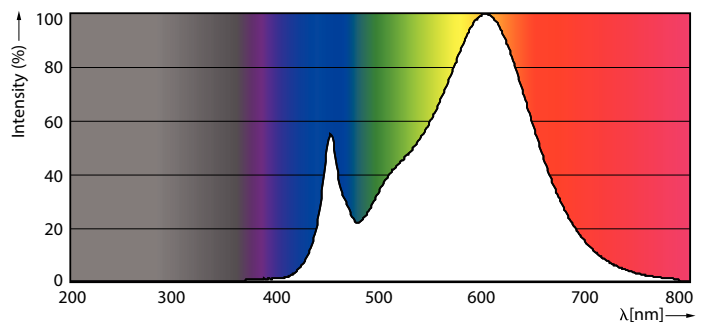
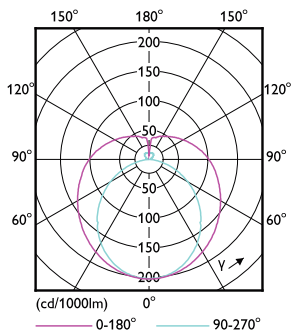
## Dimensional drawing



| Product                      | D       | A1       | A2       | A3     |
|------------------------------|---------|----------|----------|--------|
| 8.5T8/COR/24-830/MF11/G 10/1 | 25.9 mm | 589.5 mm | 595.7 mm | 604 mm |

TLED MF CorePro 2ft 1100lm 3000K

## Photometric data



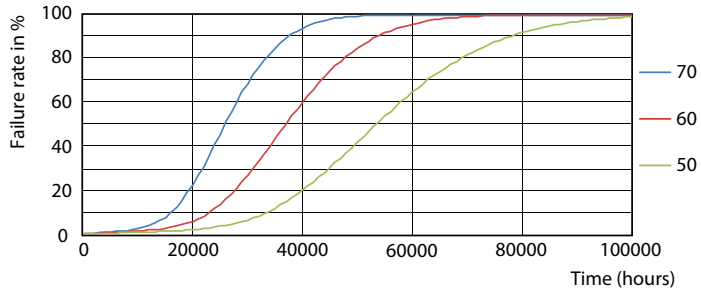
8.5W G13 840

8-5W G13



# T8

## Lifetime



8.5W G13

