



# MASTER LEDtube EM/ Mains T8

## MASTER LEDtube 1500mm HO 18.2W 830 T8

The Philips MASTER LEDtube integrates a LED light source into a traditional fluorescent form factor. Its unique design creates a perfectly uniform visual appearance which cannot be distinguished from traditional fluorescent. For those that are looking for value for money within limited budget and re-lamping efforts for better light effect and lifetime.

### Warnings and Safety

- NOTES: The overall energy efficiency and light distribution of any installation that uses these lamps are determined by the design of the installation.

### Product data

General Information	
Cap-Base	G13 ROT (Rotating) [ Medium Bi-Pin Fluorescent]
EU RoHS compliant	Yes
Nominal Lifetime (Nom)	60000 h
Switching Cycle	200000X
Light Technical	
Color Code	830 [ CCT of 3000K]
Beam Angle (Nom)	160 °
Luminous Flux (Nom)	2900 lm
Color Designation	White (WH)
Correlated Color Temperature (Nom)	3000 K
Luminous Efficacy (rated) (Nom)	159.00 lm/W
Color Consistency	<6
Color Rendering Index (Nom)	83

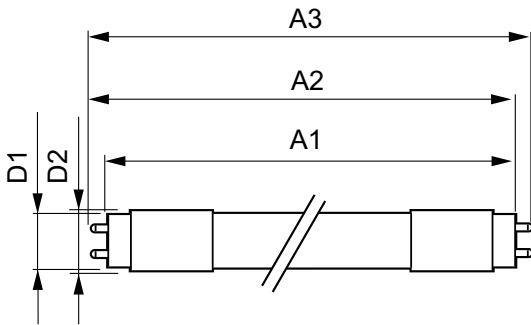
LLMF At End Of Nominal Lifetime (Nom) 70 %	
Operating and Electrical	
Input Frequency	50 to 60 Hz
Power (Nom)	18.2 W
Lamp Current (Max)	87 mA
Lamp Current (Min)	79 mA
Starting Time (Nom)	0.5 s
Warm Up Time to 60% Light (Nom)	0.5 s
Power Factor (Nom)	0.9
Voltage (Nom)	220-240 V
Temperature	
T-Ambient (Max)	45 °C
T-Ambient (Min)	-20 °C
T-Storage (Max)	65 °C

# MASTER LEDtube EM/Mains T8

T-Storage (Min)	-40 °C
T-Case Maximum (Nom)	55 °C
<b>Controls and Dimming</b>	
Dimmable	No
<b>Mechanical and Housing</b>	
Bulb Material	Plastic
Product Length	1500 mm
<b>Approval and Application</b>	
Energy Efficiency Label (EEL)	A++
Energy Saving Product	Yes
Approval Marks	RoHS compliance TUV CE marking KEMA Keur certificate

Energy Consumption kWh/1000 h	19 kWh
<b>Product Data</b>	
Full product code	871869959241700
Order product name	MASTER LEDtube 1500mm HO 18.2W 830 T8
EAN/UPC - Product	8718699592417
Order code	929001922902
Numerator - Quantity Per Pack	1
Numerator - Packs per outer box	10
Material Nr. (12NC)	929001922902
Net Weight (Piece)	0.450 kg

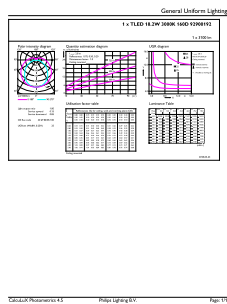
## Dimensional drawing



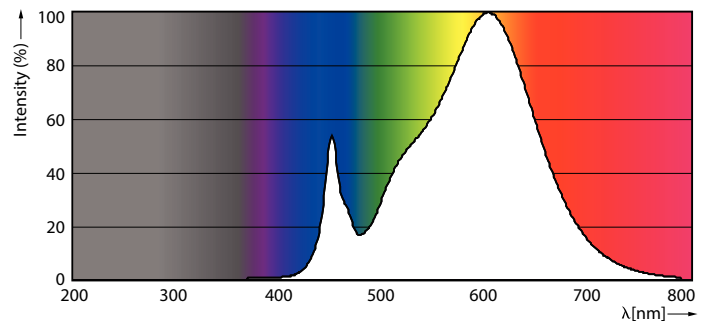
TLED master HE 2900lm 18.2w 5ft 3000k

Product	D1	D2	A1	A2	A3
MASTER LEDtube 1500mm HO 18.2W 830 T8	25.8 mm	28 mm	1498.8 mm	1505.9 mm	1513 mm

## Photometric data



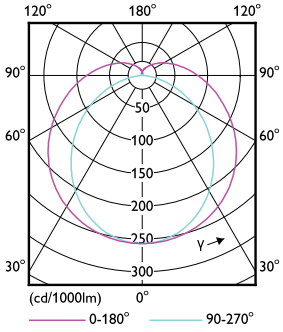
LEDtube MAS HO 18.2W G13 830 16D ND



LEDtube MAS HO 12.5W G13 830 16D ND

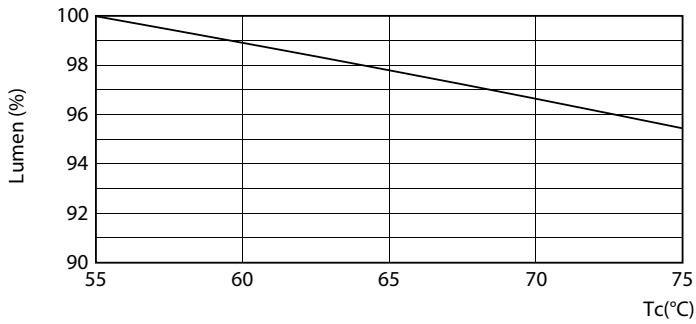
# MASTER LEDtube EM/Mains T8

## Photometric data

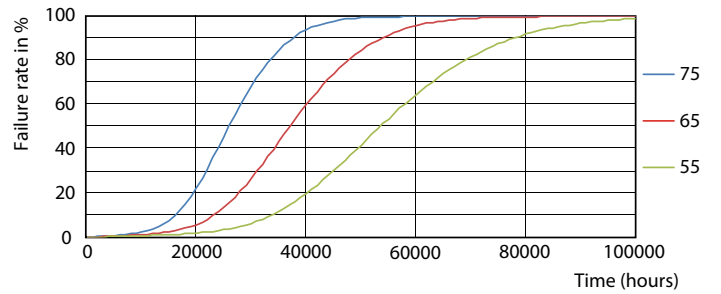


LEDtube MAS HO 12.5W G13 830 16D ND

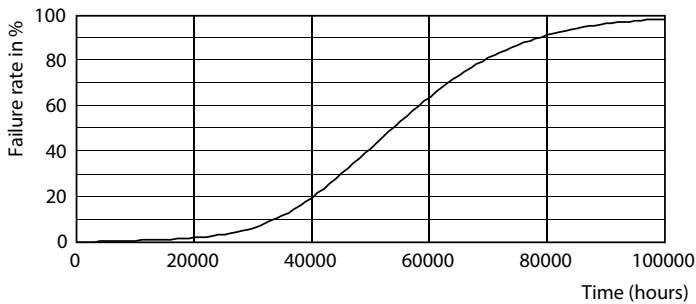
## Lifetime



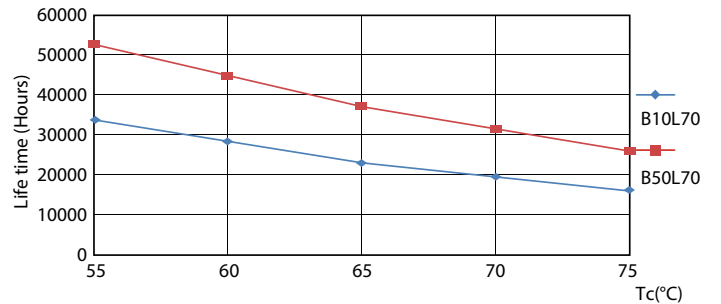
LEDtube MAS HO 18.2W G13 830 16D ND



LEDtube MAS HO 12.5W G13 830 16D ND



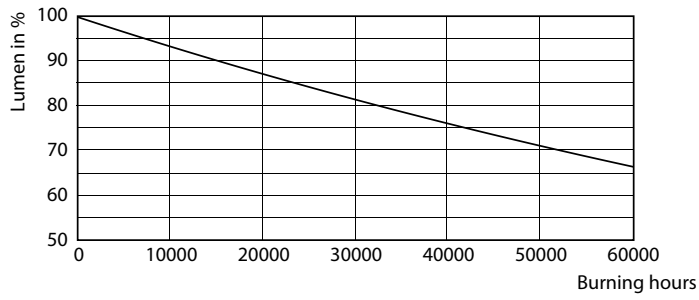
LEDtube MAS HO 12.5W G13 830 16D ND



LEDtube MAS HO 12.5W G13 830 16D ND

# MASTER LEDtube EM/Mains T8

## Lifetime



LEDtube MAS HO G13

