



MASTER LEDtube Mains T5



MASTER LEDtube 1500mm HO 26W 865 T5

The new Philips Master LEDtube Mains T5 brings simplicity to your lighting project. You don't need to pay attention to the driver technology anymore. Thanks to a unique design, Philips MASTER LEDtube Mains T5 installs in luminaires operating on mains power connection. So simple to operate! ;Perfectly safe, reliable & easy to install Philips MASTER LEDtube Mains T5 is the ideal alternative to standard fluorescent tubes to maximize value over lifetime with high energy saving and lower maintenance costs.

Product data

General information		Operating and electrical	
Cap-Base	G5 [G5]	Input Frequency	50 to 60 Hz
EU RoHS compliant	Yes	Power (Nom)	26 W
Nominal Lifetime (Nom)	50000 h	Lamp Current (Nom)	125 mA
Switching Cycle	200000X	Starting Time (Nom)	0.5 s
Flux measurement reference	Sphere	Warm Up Time to 60% Light (Nom)	0.5 s
		Power Factor (Nom)	0.92
		Voltage (Nom)	220-240 V
Light technical		Temperature	
Color Code	865 [CCT of 6500K]	T-Ambient (Max)	45 °C
Beam Angle (Nom)	200 °	T-Ambient (Min)	-20 °C
Luminous Flux (Nom)	3900 lm	T-Storage (Max)	65 °C
Color Designation	Cool Daylight	T-Storage (Min)	-40 °C
Correlated Color Temperature (Nom)	6500 K	T-Case Maximum (Nom)	70 °C
Luminous Efficacy (rated) (Nom)	150.00 lm/W		
Color Consistency	<6		
Color Rendering Index (Nom)	80		
LLMF At End Of Nominal Lifetime (Nom)	70 %		

MASTER LEDtube Mains T5

Controls and dimming

Dimmable	No
----------	----

Mechanical and housing

Bulb Finish	Frosted
Bulb Material	Glass
Product Length	1500 mm
Bulb Shape	Tube, double-ended

Approval and application

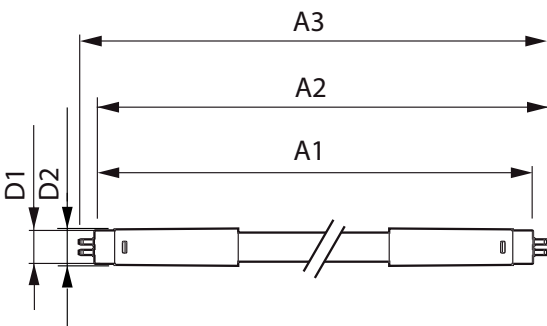
Energy Efficiency Class	D
Energy Saving Product	Yes
Approval Marks	RoHS compliance CE marking KEMA Keur certificate

Energy Consumption kWh/1000 h	26 kWh
EPREL Registration Number	652786

Product data

Full product code	871869681933300
Order product name	MASTER LEDtube 1500mm HO 26W 865 T5
EAN/UPC - Product	8718696819333
Order code	929001909002
Numerator - Quantity Per Pack	1
Numerator - Packs per outer box	10
Material Nr. (12NC)	929001909002
Copy Net Weight (Piece)	0.285 kg

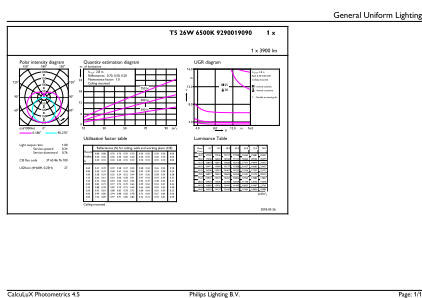
Dimensional drawing



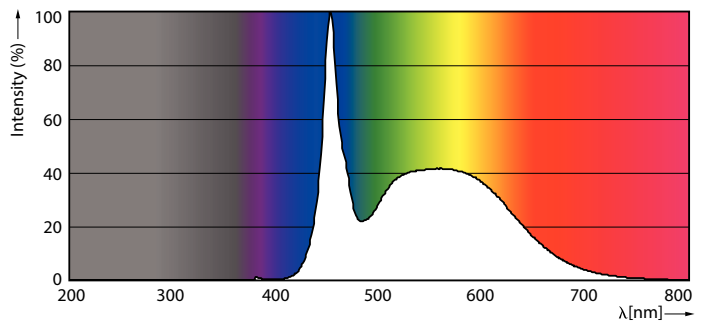
MASTER LEDtube 1500mm HO 26W 865 T5

Product	D1	D2	A1	A2	A3
MASTER LEDtube 1500mm HO 26W 865 T5	15 mm	16.9 mm	1449 mm	1456.1 mm	1463.2 mm

Photometric data



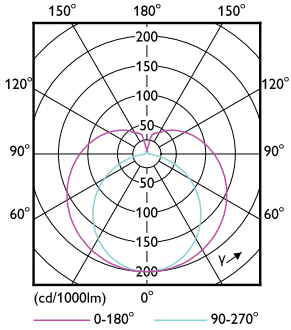
26W G5 865 6500K



26W G5

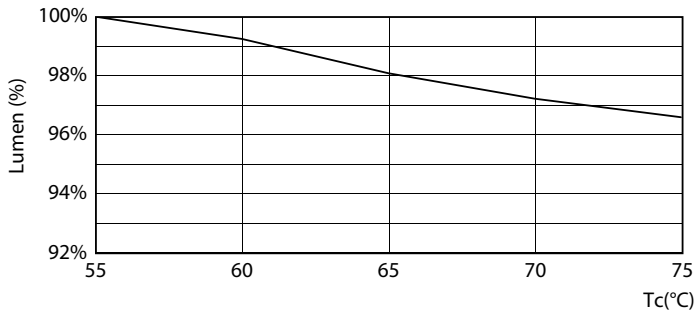
MASTER LEDtube Mains T5

Photometric data

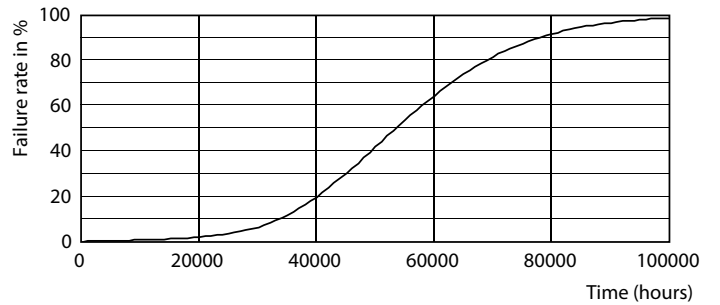


26W G5 830 3000K

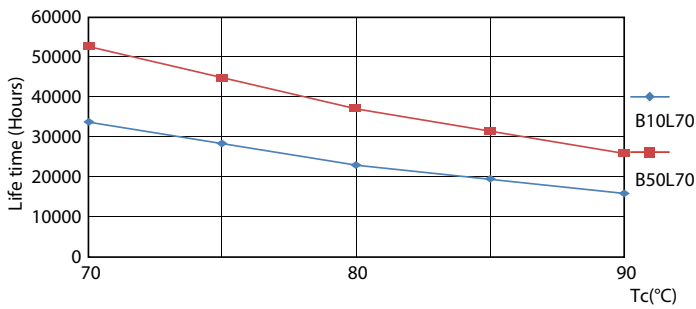
Lifetime



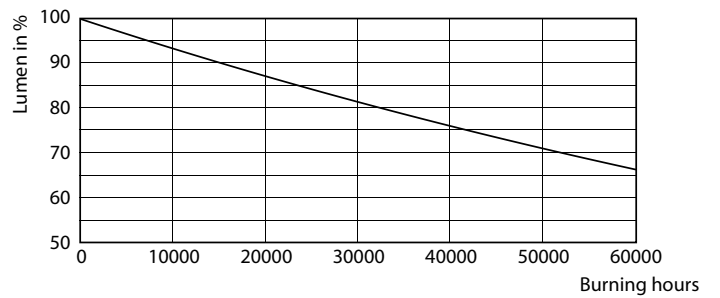
LEDtube MAS 1 26W 50K Lumen-VsTc-LMP



26W G5



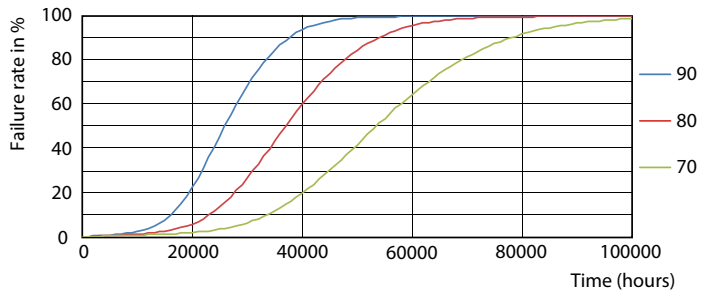
LEDtube MAS 1 26W 50K LifetimeVsTc-LED



26W G5

MASTER LEDtube Mains T5

Lifetime



LEDtube MAS 1 26W 50K FailureRate-LED

