



MASTER LEDtube EM/ Mains T8

MASTER LEDtube 1200mm UO 16W 840 T8 FF RCA

The Philips MASTER LEDtube integrates a LED light source into a traditional fluorescent form factor. Its unique design creates a perfectly uniform visual appearance, which cannot be distinguished from traditional fluorescent. These T8 LED tubes are the right choice for absolute performance and are designed to stand up to everyday conditions. Unparalleled savings thanks to low energy consumption and an exceptionally long lifetime ensure this tube masters every demanding application.

Warnings and Safety

· NOTE: The overall energy efficiency and light distribution of any installation that uses these lamps will be determined by the design of the installation.

Product data

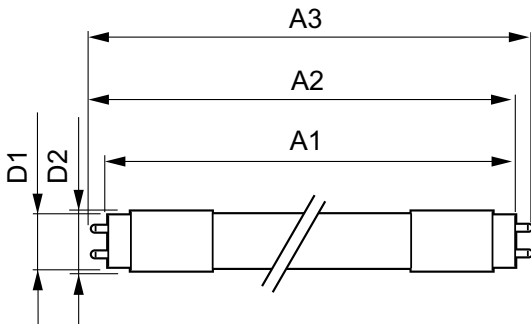
General information		Luminous Efficacy (rated) (Nom)	
Cap-Base	G13 [Medium Bi-Pin Fluorescent]	Luminous Efficacy (rated) (Nom)	156.00 lm/W
EU RoHS compliant	Yes	Color Consistency	<6
Nominal Lifetime (Nom)	50000 h	Color Rendering Index (Nom)	83
Switching Cycle	200000	LLMF At End Of Nominal Lifetime (Nom)	70 %
Light technical		Operating and electrical	
Color Code	840 [CCT of 4000K]	Input Frequency	50 to 60 Hz
Beam Angle (Nom)	160 °	Power (Nom)	16 W
Luminous Flux (Nom)	2500 lm	Lamp Current (Max)	75 mA
Color Designation	Cool White (CW)	Lamp Current (Min)	68 mA
Correlated Color Temperature (Nom)	4000 K	Starting Time (Nom)	0.5 s
		Warm Up Time to 60% Light (Nom)	0.5 s

MASTER LEDtube EM/Mains T8

Power Factor (Nom)	0.9
Voltage (Nom)	220-240 V
Temperature	
T-Ambient (Max)	45 °C
T-Ambient (Min)	-20 °C
T-Storage (Max)	65 °C
T-Storage (Min)	-40 °C
T-Case Maximum (Nom)	55 °C
Controls and dimming	
Dimmable	No
Mechanical and housing	
Product Length	1200 mm
Bulb Shape	Tube, double-ended
Approval and application	
Energy Saving Product	Yes

Approval Marks	RoHS compliance TUV CE marking KEMA Keur certificate
Energy Consumption kWh/1000 h	16 kWh
Product data	
Full product code	871869681801500
Order product name	MASTER LEDtube 1200mm UO 16W 840 T8 FF RCA
EAN/UPC - Product	8718696818015
Order code	929001908008
Numerator - Quantity Per Pack	1
Numerator - Packs per outer box	10
Material Nr. (12NC)	929001908008
Net Weight (Piece)	0.215 kg

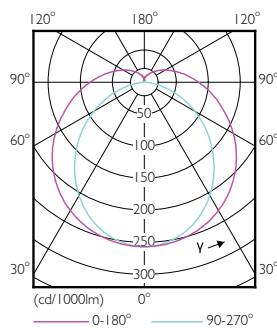
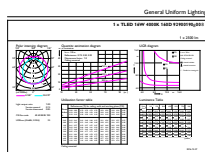
Dimensional drawing



MASTER LEDtube 1200mm UO 16W 840 T8 FF RCA

Product	D1	D2	A1	A2	A3
MASTER LEDtube 1200mm UO 16W 840 T8 FF RCA	25.8 mm	28 mm	1198.2 mm	1205.3 mm	1198.2 mm

Photometric data

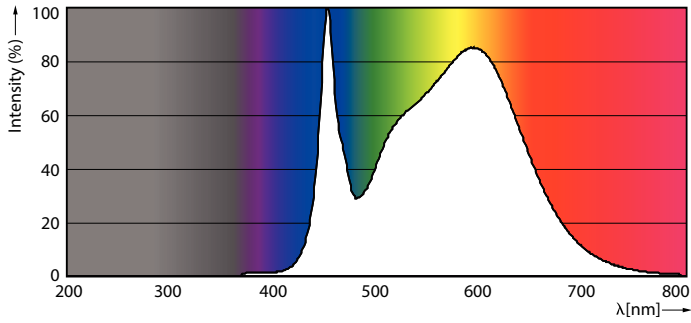


LEDtube G13 16W 4000K 160D

LEDtube G13 16W 3000K 160D

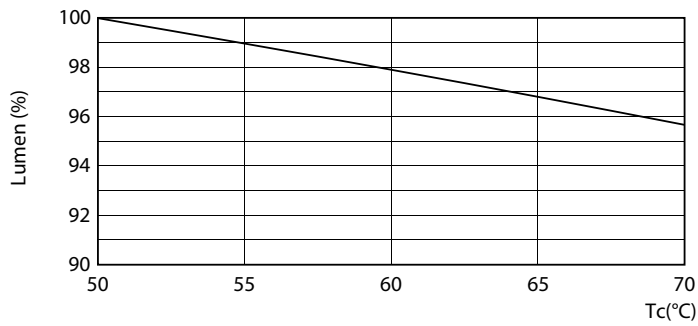
MASTER LEDtube EM/Mains T8

Photometric data

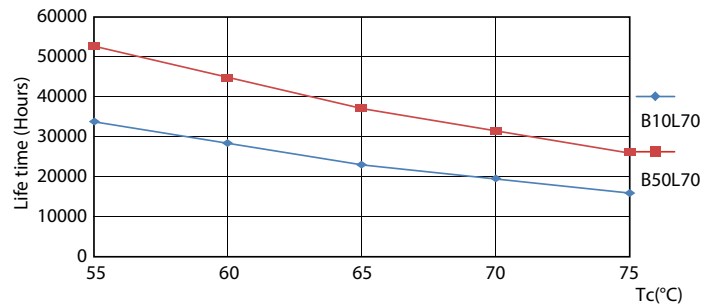


LEDtube G13 16W 4000K 160D

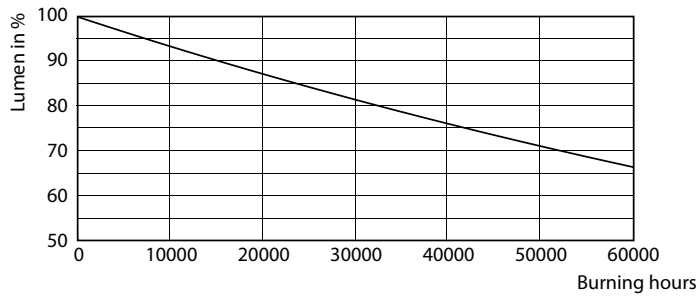
Lifetime



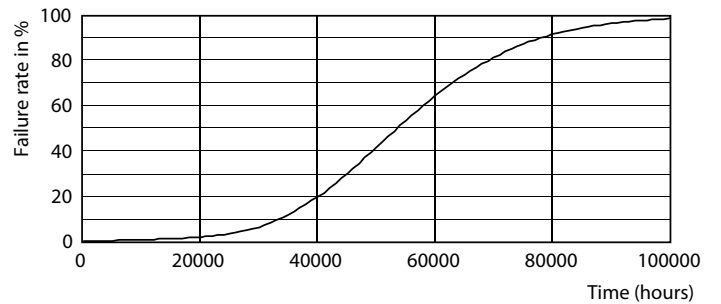
LEDtube G13 16W 3000K 160D LumenVsTc



LEDtube G13 16W 3000K 160D LifetimeVsTc



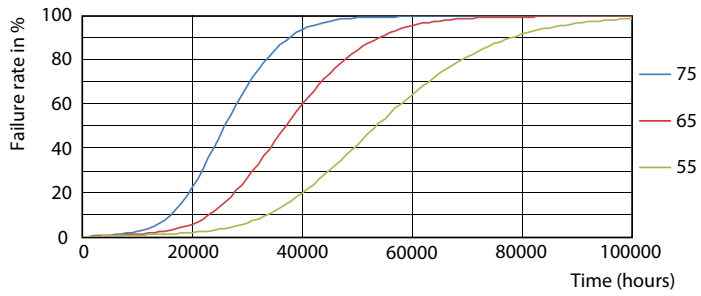
LEDtube G13 16W 3000K 160D



LEDtube G13 16W 3000K 160D

MASTER LEDtube EM/Mains T8

Lifetime



LEDtube G13 16W 3000K 160D FailureRate

