



PL-C/T

5.5PL-C/LED/13H/840/IF5/P/4P 20/1

Philips PLED 4-pin & 2-pin lamps are an affordable LED solution to replace compact fluorescent lamps. The product provides a natural lighting effect for use in many lighting applications, and provides instant energy savings, making them an environmentally-friendly solution. Available as replacements for 13W, 26W and 32W compact fluorescent lamps.

Product data

General Information	
Cap-Base	G24Q [G24q]
EU RoHS compliant	Yes
Nominal Lifetime (Nom)	50000 h
Switching Cycle	50000X
Light Technical	
Color Code	840 [CCT of 4000K]
Beam Angle (Nom)	150 °
Luminous Flux (Nom)	580 lm
Color Designation	Cool White (CW)
Correlated Color Temperature (Nom)	4000 K
Luminous Efficacy (rated) (Nom)	105.00 lm/W
Color Consistency	<6
Color Rendering Index (Nom)	82
LLMF At End Of Nominal Lifetime (Nom)	70 %
Operating and Electrical	
Input Frequency	25000-100000 Hz
Power (Nom)	5.5 W
Lamp Current (Max)	280 mA
Lamp Current (Min)	130 mA

Starting Time (Nom)	0.5 s
Warm Up Time to 60% Light (Nom)	0.5 s
UL Type	Type A - works on ballast
Power Factor (Nom)	0.9
Voltage (Nom)	14-60 V

Temperature	
T-Ambient (Max)	45 °C
T-Ambient (Min)	-20 °C
T-Storage (Max)	65 °C
T-Storage (Min)	-40 °C
T-Case Maximum (Nom)	75 °C

Controls and Dimming	
Dimmable	Yes

Mechanical and Housing	
Bulb Material	Plastic
Product Length	140 mm
Bulb Shape	Tube, single-ended

PL-C/T

Approval and Application

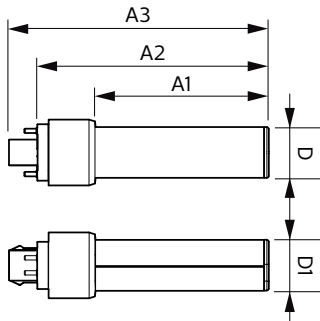
Energy Saving Product	Yes
Approval Marks	RoHS compliance UL certificate
Energy Consumption kWh/1000 h	- kWh

Product Data

Order product name	5.5PL-C/LED/13H/840/IF5/P/4P 20/1
EAN/UPC - Product	046677532420

Order code	929001885604
Numerator - Quantity Per Pack	1
Numerator - Packs per outer box	20
Material Nr. (12NC)	929001885604
Net Weight (Piece)	0.064 kg

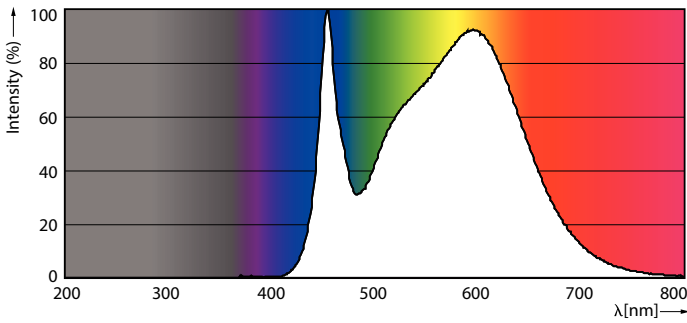
Dimensional drawing



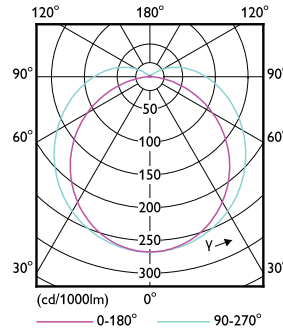
PLED PLC-H 5-13W 580lm 4000K G24q

Product	D	D1	A1	A2	A3
5.5PL-C/LED/13H/840/IF5/P/4P 20/1	27 mm	27 mm	91.5 mm	122.4 mm	137.4 mm

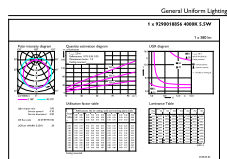
Photometric data



LEDtube PLC 13H 5.5W G24Q 840 15D ND

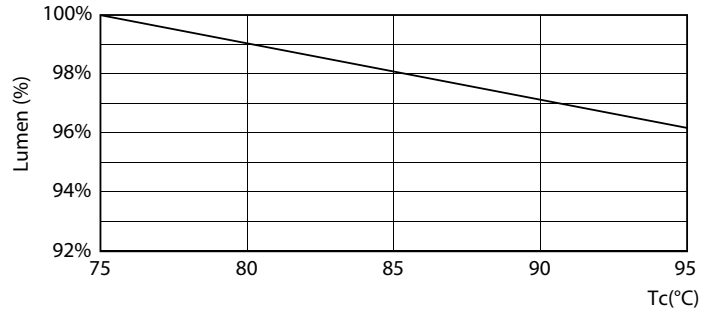
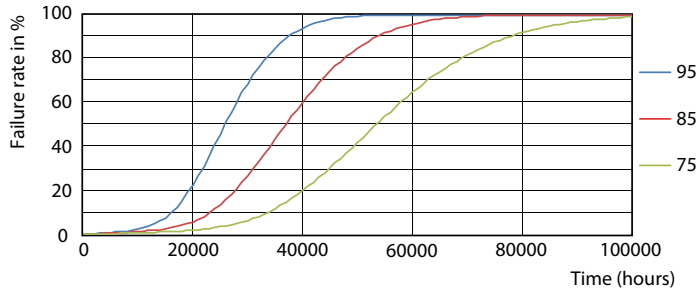


LEDtube PLC 13H 5W GX23-2 827 15D ND



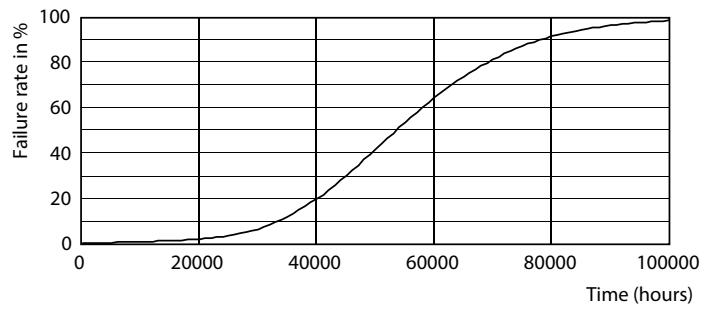
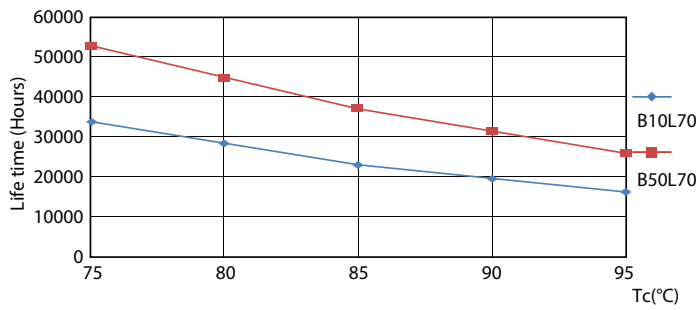
LEDtube PLC 13H 5.5W G24Q 840 15D ND

Lifetime



LEDtube PLC 13H 5.5W G24Q 827 15D ND

LEDtube PLC 13H 5.5W G24Q 827 15D ND



LEDtube PLC 13H 5.5W G24Q 827 15D ND

LEDtube PLC 13H 5W GX23-2 827 15D ND



LEDtube PLC 13H 5W GX23-2 827 15D ND

