



PL-C/T

5.5PL-C/LED/13H/830/IF5/P/4P 20/1

Philips PLED 4-pin & 2-pin lamps are an affordable LED solution to replace compact fluorescent lamps. The product provides a natural lighting effect for use in many lighting applications, and provides instant energy savings, making them an environmentally-friendly solution. Available as replacements for 13W, 26W and 32W compact fluorescent lamps.

Product data

General information	
Cap-Base	G24Q [G24q]
EU RoHS compliant	Yes
Nominal Lifetime (Nom)	50000 h
Switching Cycle	50000
Tier	CorePro
Light technical	
Color Code	830 [CCT of 3000K]
Beam Angle (Nom)	150 °
Luminous Flux (Nom)	550 lm
Color Designation	White (WH)
Correlated Color Temperature (Nom)	3000 K
Luminous Efficacy (rated) (Nom)	100.00 lm/W
Color Consistency	<6
Color Rendering Index (Nom)	82
LLMF At End Of Nominal Lifetime (Nom)	70 %
Operating and electrical	
Input Frequency	25000-100000 Hz
Power (Nom)	5.5 W
Lamp Current (Max)	280 mA

Lamp Current (Min)	130 mA
Wattage Equivalent	13 W
Starting Time (Nom)	0.5 s
Warm Up Time to 60% Light (Nom)	0.5 s
UL Type	Type A - works on ballast
Power Factor (Nom)	0.9
Voltage (Nom)	14-60 V
Temperature	
T-Ambient (Max)	45 °C
T-Ambient (Min)	-20 °C
T-Storage (Max)	65 °C
T-Storage (Min)	-40 °C
T-Case Maximum (Nom)	75 °C
Controls and dimming	
Dimmable	Yes
Mechanical and housing	
Bulb Finish	Frosted
Bulb Material	Plastic
Product Length	140 mm

PL-C/T

Bulb Shape	Tube, single-ended
------------	--------------------

Approval and application

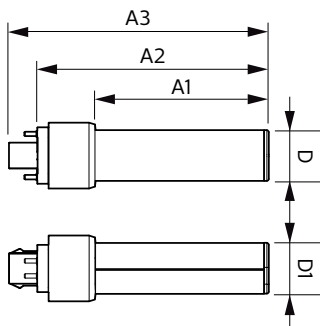
Energy Saving Product	Yes
Approval Marks	RoHS compliance UL certificate
Energy Consumption kWh/1000 h	- kWh

Product data

Order product name	5.5PL-C/LED/13H/830/IF5/P/4P 20/1
--------------------	-----------------------------------

EAN/UPC - Product	046677532406
Order code	929001885404
Numerator - Quantity Per Pack	1
Numerator - Packs per outer box	20
Material Nr. (12NC)	929001885404
Net Weight (Piece)	0.060 kg

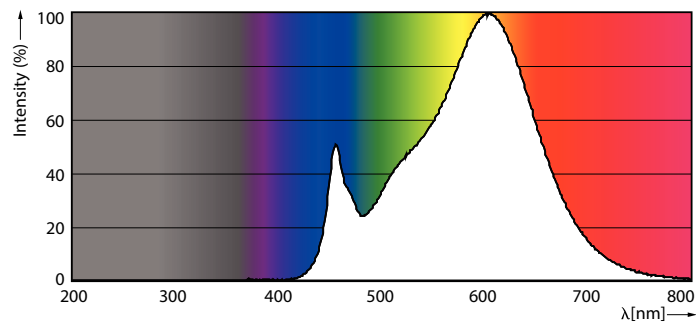
Dimensional drawing



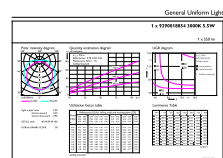
5.5PL-C/LED/13H/830/IF5/P/4P 20/1

Product	D	D1	A1	A2	A3
5.5PL-C/LED/13H/830/IF5/P/4P 20/1	27 mm	27 mm	91.5 mm	122.4 mm	137.4 mm

Photometric data

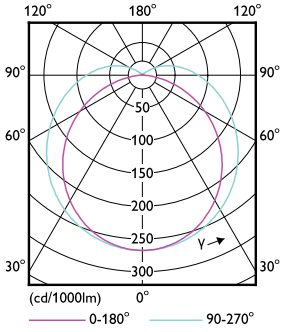


LEDtube PLC 13H 5.5W G24Q 830 15D ND



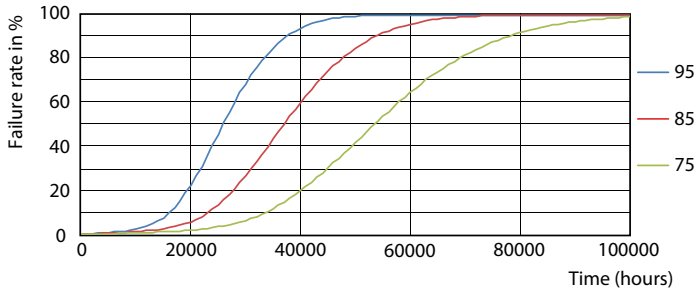
LEDtube PLC 13H 5.5W G24Q 830 15D ND

Photometric data

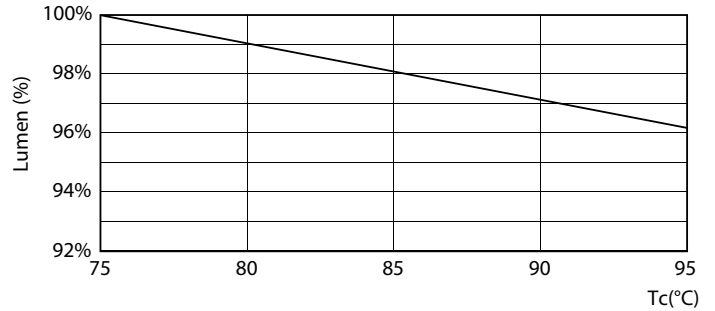


LEDtube PLC 13H 5W GX23-2 827 15D ND

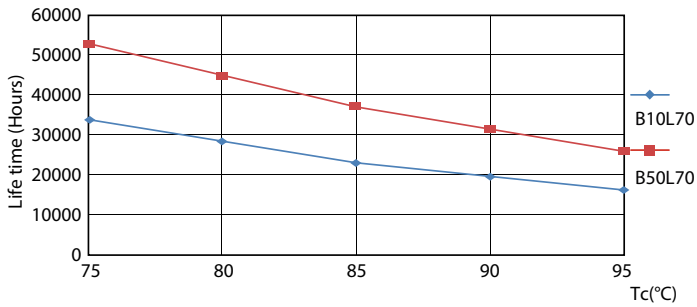
Lifetime



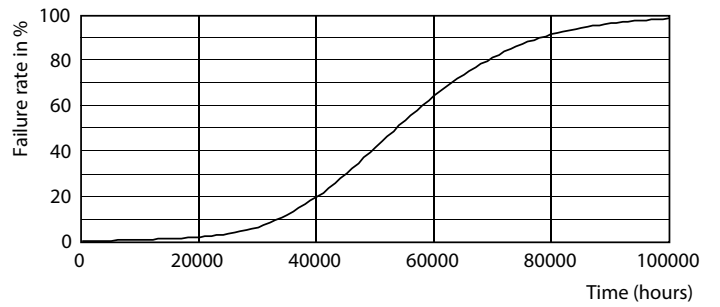
LEDtube PLC 13H 5.5W G24Q 827 15D ND



LEDtube PLC 13H 5.5W G24Q 827 15D ND



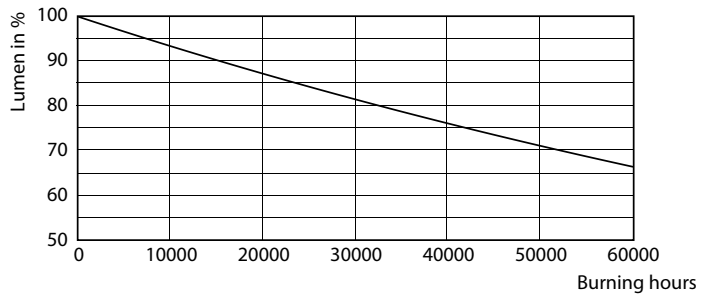
LEDtube PLC 13H 5.5W G24Q 827 15D ND



LEDtube PLC 13H 5W GX23-2 827 15D ND

PL-C/T

Lifetime



LEDtube PLC 13H 5W GX23-2 827 15D ND

