



MASTER LEDtube EM/ Mains T8

MASTER LEDtube 600mm HO VWV 10W 865 T8

The Philips MASTER LEDtube integrates a LED light source into a traditional fluorescent form factor. Its unique design creates a perfectly uniform visual appearance which cannot be distinguished from traditional fluorescent. For those that are looking for value for money within limited budget and re-lamping efforts for better light effect and lifetime.

Warnings and Safety

- NOTES: The overall energy efficiency and light distribution of any installation that uses these lamps are determined by the design of the installation.

Product data

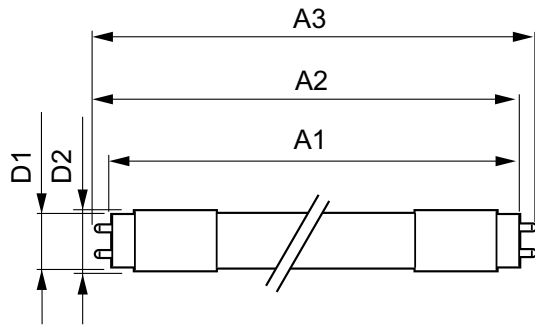
General Information		LLMF At End Of Nominal Lifetime (Nom) 70 %	
Cap-Base	G13 [Medium Bi-Pin Fluorescent]	Operating and Electrical	
EU RoHS compliant	Yes	Input Frequency	50 to 60 Hz
Nominal Lifetime (Nom)	60000 h	Power (Nom)	10 W
Switching Cycle	200000X	Lamp Current (Max)	101 mA
Technical Type	10-17-18W	Lamp Current (Min)	38 mA
Light Technical		Starting Time (Nom)	0.5 s
Color Code	865 [CCT of 6500K]	Warm Up Time to 60% Light (Nom)	0.5 s
Beam Angle (Nom)	160 °	Power Factor (Nom)	0.90
Luminous Flux (Nom)	1050 lm	Voltage (Nom)	100-277 V
Color Designation	Cool Daylight	Temperature	
Correlated Color Temperature (Nom)	6500 K	T-Ambient (Max)	45 °C
Luminous Efficacy (rated) (Nom)	105.00 lm/W	T-Ambient (Min)	-20 °C
Color Consistency	<6	T-Storage (Max)	65 °C
Color Rendering Index (Nom)	80		

MASTER LEDtube EM/Mains T8

T-Storage (Min)	-40 °C
T-Case Maximum (Nom)	60 °C
Controls and Dimming	
Dimmable	No
Mechanical and Housing	
Bulb Finish	Frosted
Product Length	600 mm
Bulb Shape	Tube, single-ended
Approval and Application	
Energy Saving Product	Yes
Approval Marks	RoHS compliance CE marking UL certificate KEMA Keur certificate

Energy Consumption kWh/1000 h	10 kWh
Product Data	
Full product code	871869681127600
Order product name	MASTER LEDtube 600mm HO VWV 10W 865 T8
EAN/UPC - Product	8718696811276
Order code	929001877612
Numerator - Quantity Per Pack	1
Numerator - Packs per outer box	10
Material Nr. (12NC)	929001877612
Net Weight (Piece)	0.115 kg

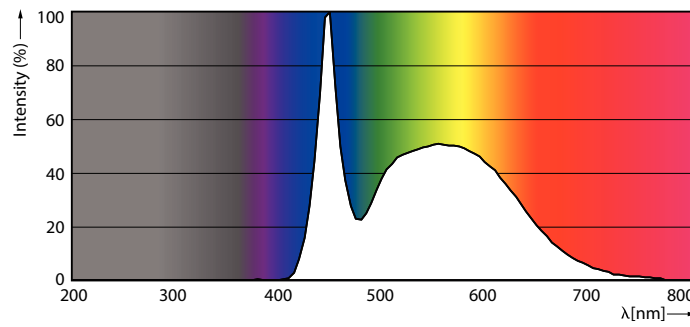
Dimensional drawing



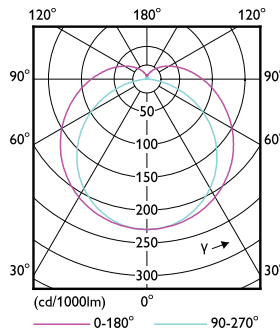
TLED Master 100-277V 1050lm 10W2ft 6500K

Product	D1	D2	A1	A2	A3
MASTER LEDtube 600mm HO VWV 10W 865 T8	25.8 mm	28 mm	588.6 mm	595.6 mm	602.6 mm

Photometric data



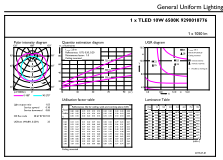
LEDtube_10W_G13_1050lm_865



LEDtube_G13_2

MASTER LEDtube EM/Mains T8

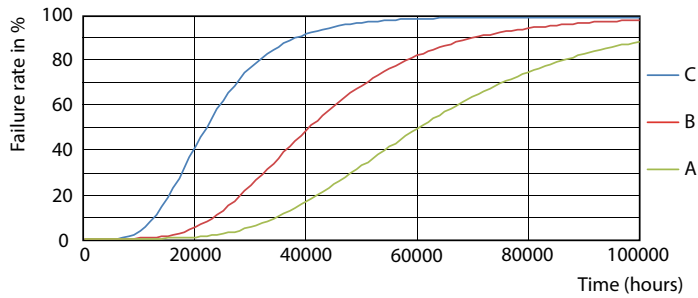
Photometric data



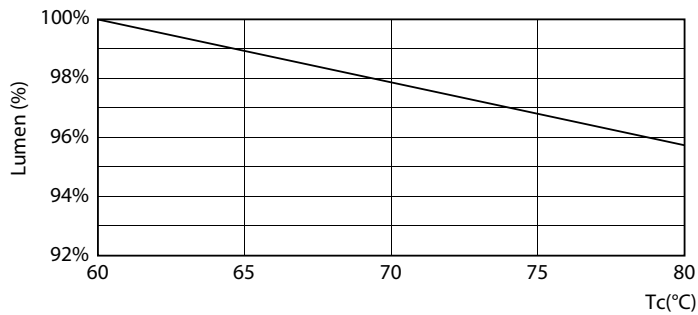
© 2021 Philips Lighting B.V. Page 10 of 11

LEDtube_10W_G13_1050lm_865

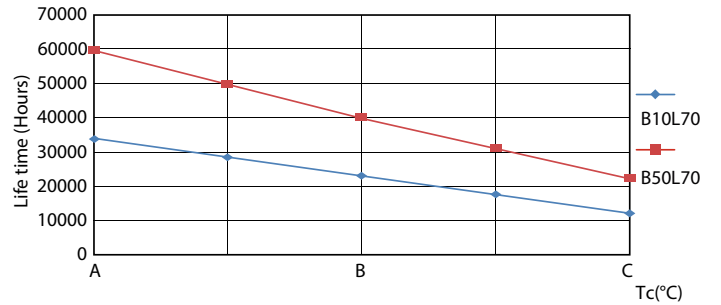
Lifetime



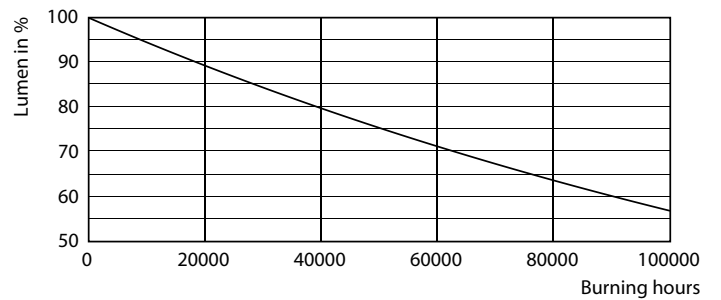
LEDtube_60K_FailureRate



LEDtube_60K_LumenVsTc



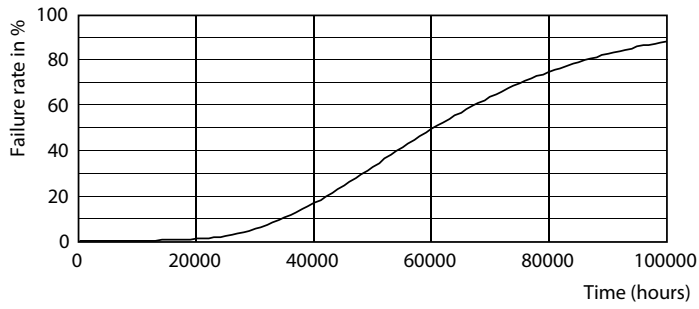
LEDtube_60K_LifetimeVsTc



LEDtube_60K

MASTER LEDtube EM/Mains T8

Lifetime



LEDtube_60K

