



# MASTER LEDtube EM/ Mains T8

## MASTER LEDtube 600mm HO VWV 10W 840 T8

The Philips MASTER LEDtube integrates a LED light source into a traditional fluorescent form factor. Its unique design creates a perfectly uniform visual appearance, which cannot be distinguished from traditional fluorescent. These T8 LED tubes are the right choice for absolute performance and are designed to stand up to everyday conditions. Unparalleled savings thanks to low energy consumption and an exceptionally long lifetime ensure this tube masters every demanding application.

### Warnings and Safety

- NOTE: The overall energy efficiency and light distribution of any installation that uses these lamps will be determined by the design of the installation.

### Product data

General information	
Cap-Base	G13 [ Medium Bi-Pin Fluorescent]
EU RoHS compliant	Yes
Nominal Lifetime (Nom)	60000 h
Switching Cycle	200000
Technical Type	10-17-18W
Light technical	
Color Code	840 [ CCT of 4000K]
Beam Angle (Nom)	160 °
Luminous Flux (Nom)	1050 lm
Color Designation	Cool White (CW)
Correlated Color Temperature (Nom)	4000 K
Luminous Efficacy (rated) (Nom)	105.00 lm/W

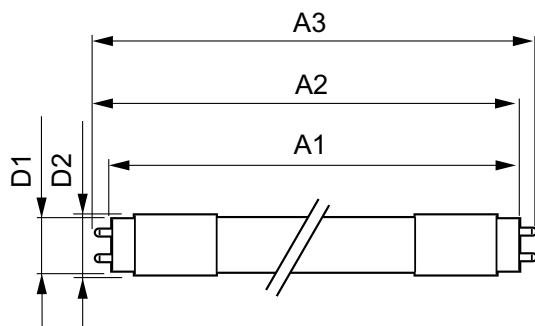
Color Consistency	<6
Color Rendering Index (Nom)	80
LLMF At End Of Nominal Lifetime (Nom)	70 %
Operating and electrical	
Input Frequency	50 to 60 Hz
Power (Nom)	10 W
Lamp Current (Max)	101 mA
Lamp Current (Min)	38 mA
Starting Time (Nom)	0.5 s
Warm Up Time to 60% Light (Nom)	0.5 s
Power Factor (Nom)	0.90
Voltage (Nom)	100-277 V

# MASTER LEDtube EM/Mains T8

Temperature	
T-Ambient (Max)	45 °C
T-Ambient (Min)	-20 °C
T-Storage (Max)	65 °C
T-Storage (Min)	-40 °C
T-Case Maximum (Nom)	60 °C
Controls and dimming	
Dimmable	No
Mechanical and housing	
Bulb Finish	Frosted
Product Length	600 mm
Bulb Shape	Tube, single-ended
Approval and application	
Energy Saving Product	Yes

Approval Marks	RoHS compliance CE marking UL certificate
	KEMA Keur certificate
Energy Consumption kWh/1000 h	10 kWh
Product data	
Full product code	871869681123800
Order product name	MASTER LEDtube 600mm HO VWV 10W 840 T8
EAN/UPC - Product	8718696811238
Order code	929001877512
Numerator - Quantity Per Pack	1
Local code description	MAS LEDtube 600mm HO VWV 10W 840 T8
Numerator - Packs per outer box	10
Material Nr. (12NC)	929001877512
Net Weight (Piece)	0.120 kg

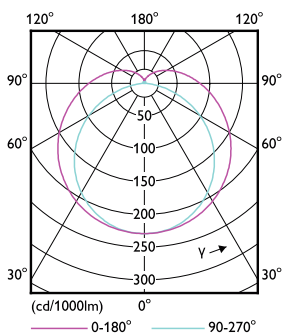
## Dimensional drawing



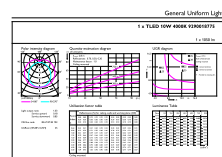
MASTER LEDtube 600mm HO VWV 10W 840 T8

Product	D1	D2	A1	A2	A3
MASTER LEDtube 600mm HO VWV 10W 840 T8	25.8 mm	28 mm	588.5 mm	595.5 mm	602.5 mm

## Photometric data



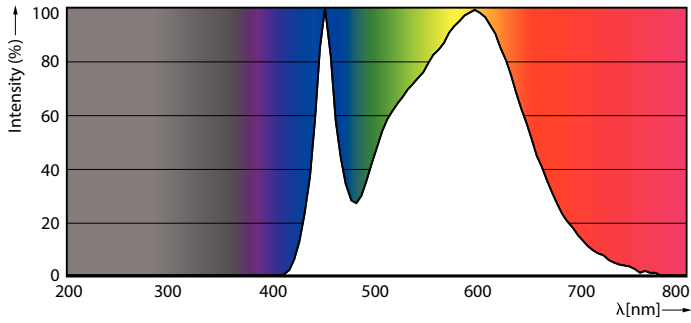
LEDtube\_G13\_2



LEDtube\_10W\_G13\_1050lm\_840

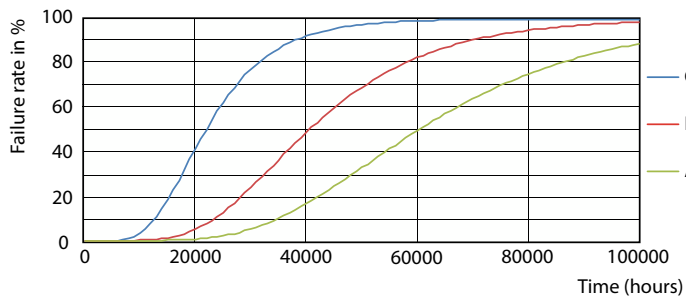
# MASTER LEDtube EM/Mains T8

## Photometric data

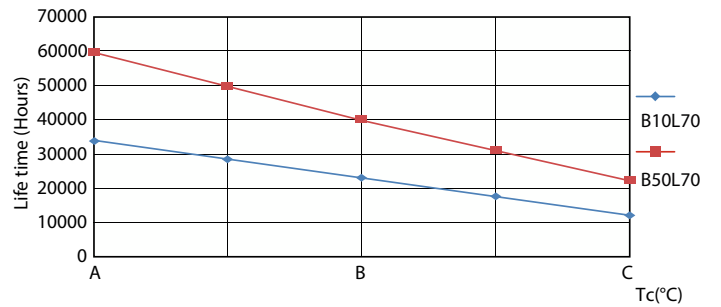


LEDtube\_10W\_G13\_1050lm\_840

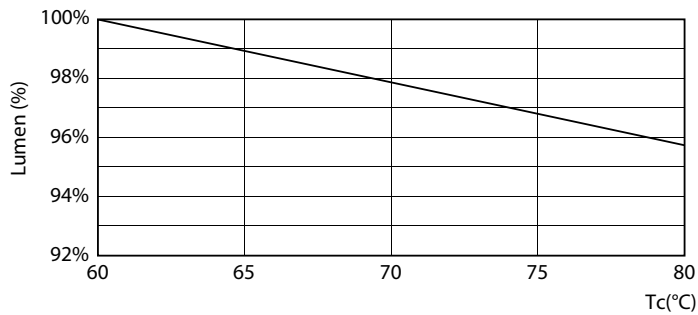
## Lifetime



FailureRate



LifetimeVsTc



LEDtube\_60K\_LumenVsTc



Lumen Maintenance Diagram

# MASTER LEDtube EM/Mains T8

## Lifetime



### Life Expectancy Diagram

