



# MASTER LEDtube EM/ Mains T8

## MAS LEDtube 1200mm HO VWV 18W 865 T8

The Philips MASTER LEDtube integrates a LED light source into a traditional fluorescent form factor. Its unique design creates a perfectly uniform visual appearance, which cannot be distinguished from traditional fluorescent. These T8 LED tubes are the right choice for absolute performance and are designed to stand up to everyday conditions. Unparalleled savings thanks to low energy consumption and an exceptionally long lifetime ensure this tube masters every demanding application.

### Warnings and Safety

- NOTE: The overall energy efficiency and light distribution of any installation that uses these lamps will be determined by the design of the installation.

### Product data

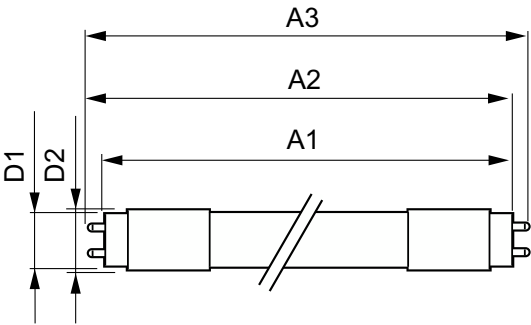
| General Information                |                                 | Color Consistency                     |             |
|------------------------------------|---------------------------------|---------------------------------------|-------------|
| Cap-Base                           | G13 [Medium Bi-Pin Fluorescent] | Color rendering index (CRI)           | <6          |
| Nominal lifetime                   | 60,000 hour(s)                  | LLMF At End Of Nominal Lifetime (Nom) | 70 %        |
| Switching Cycle                    | 200,000                         | Operating and Electrical              |             |
| Lighting Technology                | LED                             | Line Frequency                        | 50 to 60 Hz |
| EU RoHS compliant                  | Yes                             | Input Frequency                       | 50 to 60 Hz |
| Light Technical                    |                                 | Power Consumption                     | 18 W        |
| Color Code                         | 865 [CCT of 6500K]              | Lamp Current (Max)                    | 183 mA      |
| Beam Angle (Nom)                   | 160 degree(s)                   | Lamp Current (Min)                    | 69 mA       |
| Luminous Flux                      | 2,100 lm                        | Starting Time (Nom)                   | 0.5 s       |
| Color Designation                  | Cool Daylight                   | Warm-up time to 60% light             | 0.5 s       |
| Correlated Color Temperature (Nom) | 6500 K                          | Power Factor (Fraction)               | 0.90        |
| Luminous Efficacy (rated) (Nom)    | 116.00 lm/W                     |                                       |             |

MASTER LEDtube EM/Mains T8

|                           |  |
|---------------------------|--|
| Voltage (Nom)             | 100-277 V  |
| Temperature               |  |
| Ambient temperature range | -20 °C to 45 °C  |
| T-Case Maximum (Nom)      | 60 °C  |
| Controls and Dimming      |  |
| Dimmable                  | No   |
| Mechanical and Housing    |  |
| Product Length            | 1,200 mm   |
| Bulb Shape                | T8   |
| Approval and Application  |  |
| Energy Saving Product     | Yes  |
| Approval Marks            | RoHS compliance CE marking UL certificate<br>KEMA Keur certificate |

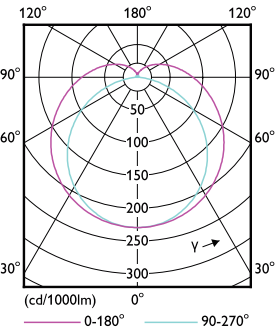
|                                 |                                      |
|---------------------------------|--------------------------------------|
| Energy Consumption kWh/1000 h   | 18 kWh                               |
| Product Data                    |                                      |
| Order product name              | MAS LEDtube 1200mm HO VWV 18W 865 T8 |
| Full product name               | MAS LEDtube 1200mm HO VWV 18W 865 T8 |
| Full product code               | 871869681121400                      |
| Order code                      | 929001877412                         |
| Material Nr. (12NC)             | 929001877412                         |
| Numerator - Quantity Per Pack   | 1                                    |
| EAN/UPC - Product/Case          | 8718696811214                        |
| Numerator - Packs per outer box | 10                                   |
| EAN/UPC - Case                  | 8718696811221                        |

Dimensional drawing

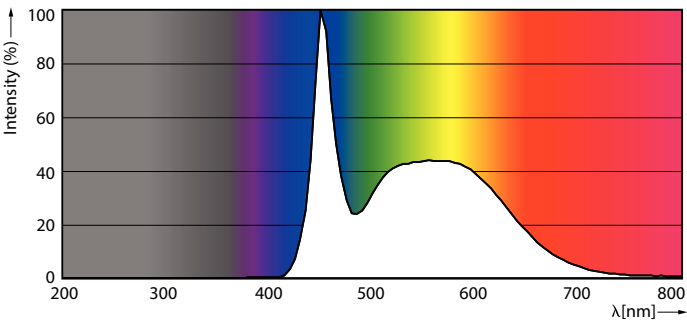


| Product                              | D1      | D2    | A1         | A2         | A3         |
|--------------------------------------|---------|-------|------------|------------|------------|
| MAS LEDtube 1200mm HO VWV 18W 865 T8 | 25.8 mm | 28 mm | 1,198.2 mm | 1,205.3 mm | 1,212.4 mm |

Photometric data



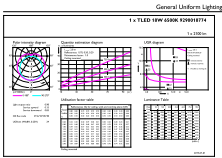
Light Distribution Diagram - MAS LEDtube 1200mm HO VWV 18W 865 T8



Spectral Power Distribution Colour - MAS LEDtube 1200mm HO VWV 18W 865 T8

MASTER LEDtube EM/Mains T8

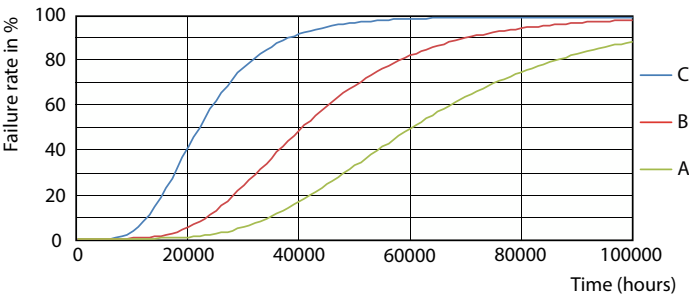
Photometric data



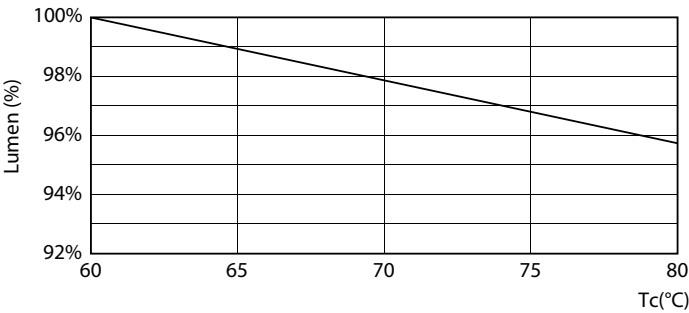
General Uniform Lighting - MAS LEDtube 1200mm HO VWV 18W 865 T8

General uniform lighting - MAS LEDtube 1200mm HO VWV 18W 865 T8

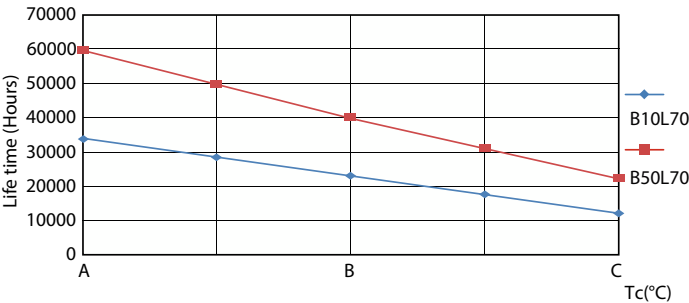
Lifetime



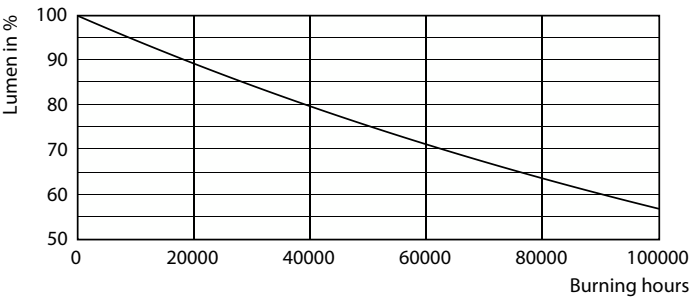
Life Expectancy Diagram - MAS LEDtube 1200mm HO VWV 18W 865 T8



Lumen Maintenance Diagram - MAS LEDtube 1200mm HO VWV 18W 865 T8



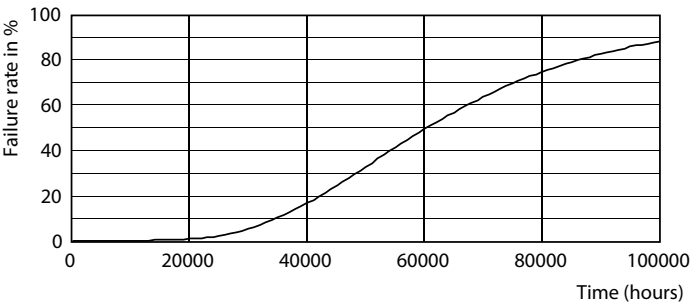
Life Expectancy Diagram - MAS LEDtube 1200mm HO VWV 18W 865 T8



Lumen Maintenance Diagram - MAS LEDtube 1200mm HO VWV 18W 865 T8

MASTER LEDtube EM/Mains T8

Lifetime



Life Expectancy Diagram - MAS LEDtube 1200mm HO VWV 18W 865 T8

