



CorePro LEDtube EM/ Mains T8



CorePro LEDtube 1500mm HO 24W 840 T8

Philips CorePro LEDtubes are the quick and easy way to replace T8 fluorescent or other LED tubes with a fast pack back time. Not only does the Core range of LEDtubes require a low initial investment, but LED energy efficiency also delivers instant savings that you can bank on over a long and reliable lifetime. Plus, with the same lamp size and light distribution as fluorescent alternatives, you'll never know the difference. There are two ways to install these LED tubes: Rewire your existing fluorescent-based luminaires so the CorePro LEDtubes work directly on the Mains. Or simply change the fluorescent starter to an LED starter that can be used with your Electromagnetic ballasts.

Warnings and Safety

- NOTE: The overall energy efficiency and light distribution of any installation that uses these lamps will be determined by the design of the installation.
- Installation must be done according to the installation diagrams provided with the lamp or available online. Installation must be done by a certified professional.

Product data

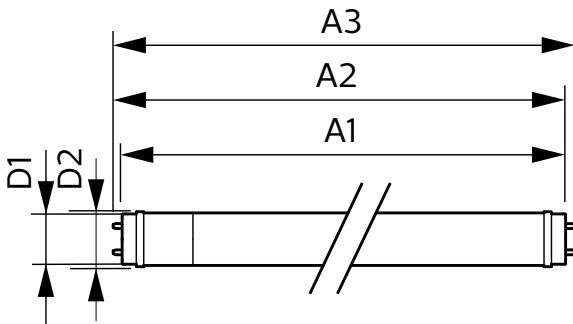
General information		Light technical	
Cap-Base	G13 [Medium Bi-Pin Fluorescent]	Color Code	840 [CCT of 4000K]
EU RoHS compliant	Yes	Beam Angle (Nom)	240 °
Nominal Lifetime (Nom)	30000 h	Luminous Flux (Nom)	2700 lm
Switching Cycle	200000X	Color Designation	Cool White (CW)
Technical Type	LEDTECH-LOV	Correlated Color Temperature (Nom)	4000 K
Flux measurement reference	Sphere	Luminous Efficacy (rated) (Nom)	112 lm/W
Tier	CorePro	Color Consistency	<6
		Color Rendering Index (Nom)	80

CorePro LEDtube EM/Mains T8

LLMF At End Of Nominal Lifetime (Nom) 70 %	
Operating and electrical	
Input Frequency	50 to 60 Hz
Power (Nom)	24 W
Lamp Current (Nom)	120 mA
Starting Time (Nom)	0.5 s
Warm Up Time to 60% Light (Nom)	0.5 s
Power Factor (Nom)	0.9
Voltage (Nom)	220-240 V
Temperature	
T-Ambient (Max)	45 °C
T-Ambient (Min)	-20 °C
T-Storage (Max)	65 °C
T-Storage (Min)	-40 °C
T-Case Maximum (Nom)	55 °C
Controls and dimming	
Dimmable	No
Mechanical and housing	
Bulb Finish	Frosted

Bulb Material	Glass
Product Length	1500 mm
Bulb Shape	Tube, double-ended
Approval and application	
Energy Efficiency Class	E
Energy Saving Product	Yes
Approval Marks	RoHS compliance CE marking KEMA Keur certificate
Energy Consumption kWh/1000 h	24 kWh
EPREL Registration Number	1183858
Product data	
Full product code	871869680617300
Order product name	CorePro LEDtube 1500mm HO 24W 840 T8
EAN/UPC - Product	8718696806173
Order code	929001875102
Numerator - Quantity Per Pack	1
Numerator - Packs per outer box	10
Material Nr. (12NC)	929001875102
Net Weight (Piece)	0.270 kg

Dimensional drawing

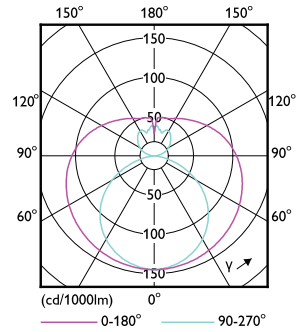
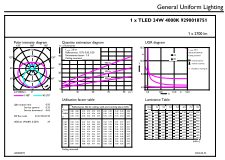


CorePro LEDtube 1500mm HO 24W 840 T8

Product	D1	D2	A1	A2	A3
CorePro LEDtube 1500mm HO 24W 840 T8					

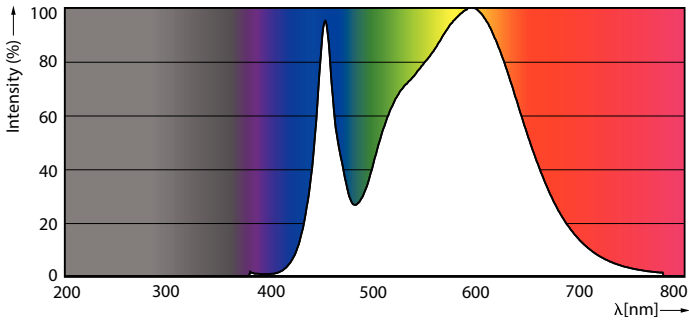
CorePro LEDtube EM/Mains T8

Photometric data



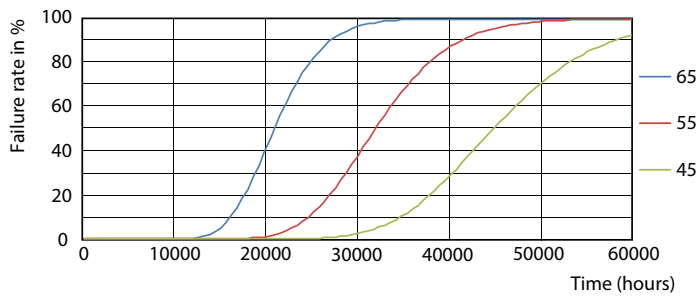
General uniform lighting

Light Distribution Diagram

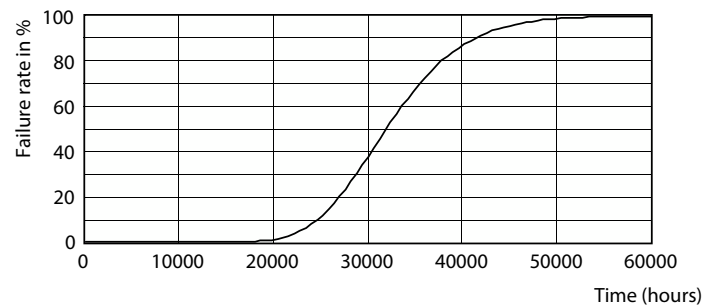


Spectral Power Distribution Colour

Lifetime



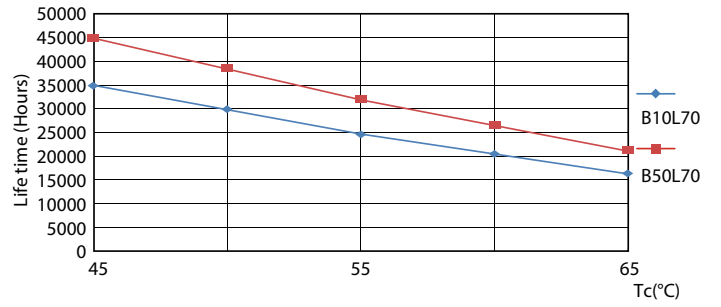
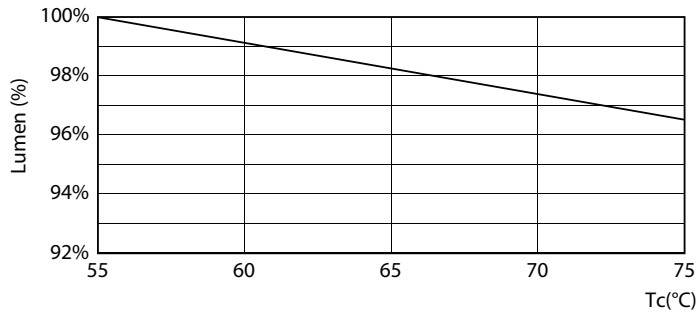
FailureRate



Life Expectancy Diagram

CorePro LEDtube EM/Mains T8

Lifetime



LumenVsTc

LifetimeVsTc



Lumen Maintenance Diagram

