



T8

14T8/COR/48-840/MF18/G 10/1

Our TLEDs are available in InstantFit (Type A / Type C) or MainsFit (Ballast bypass / Type B) versions. The InstantFit lamps work on a broad variety of ballasts and LED drivers. Only InstantFit has over 15,000 lamp & ballast combinations delivering even light output, energy savings and a long lifetime. Our MainsFit products feature a double-ended design, simplifying installation while a proprietary safety circuit minimizes a shock risk. Lamp sizes range from 2-foot to 8-foot and U-bend with a variety of lumen outputs.

Product data

General Information	
Cap-Base	G13 [Medium Bi-Pin Fluorescent]
EU RoHS compliant	Yes
Nominal Lifetime (Nom)	50000 h
Switching Cycle	50000X
Light Technical	
Color Code	840 [CCT of 4000K]
Beam Angle (Nom)	240 °
Luminous Flux (Nom)	1800 lm
Color Designation	Cool White (CW)
Correlated Color Temperature (Nom)	4000 K
Luminous Efficacy (rated) (Nom)	128.00 lm/W
Color Consistency	<6
Color Rendering Index (Nom)	80
LLMF At End Of Nominal Lifetime (Nom)	70 %
Operating and Electrical	
Input Frequency	50 to 60 Hz
Power (Nom)	14 W

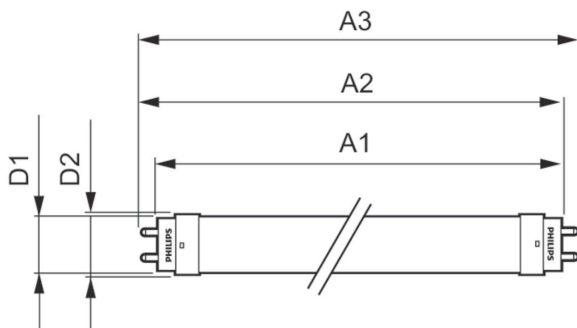
Lamp Current (Max)	130 mA
Lamp Current (Min)	47 mA
Starting Time (Nom)	0.5 s
Warm Up Time to 60% Light (Nom)	0.5 s
UL Type	Type B - bypass the ballast
Power Factor (Nom)	0.9
Voltage (Nom)	120-277 V
Temperature	
T-Ambient (Max)	45 °C
T-Ambient (Min)	-20 °C
T-Storage (Max)	65 °C
T-Storage (Min)	-40 °C
T-Case Maximum (Nom)	70 °C
Controls and Dimming	
Dimmable	No
Mechanical and Housing	
Bulb Material	Glass

T8

Product Length	1200 mm
Bulb Shape	Tube, double-ended
Approval and Application	
Energy Saving Product	Yes
Approval Marks	RoHS compliance UL certificate DLC compliance
Energy Consumption kWh/1000 h	- kWh
Product Data	
Order product name	14T8/COR/48-840/MF18/G 10/1

EAN/UPC - Product	046677477332
Order code	929001845634
Numerator - Quantity Per Pack	1
Numerator - Packs per outer box	10
Material Nr. (12NC)	929001845634
Net Weight (Piece)	0.220 kg

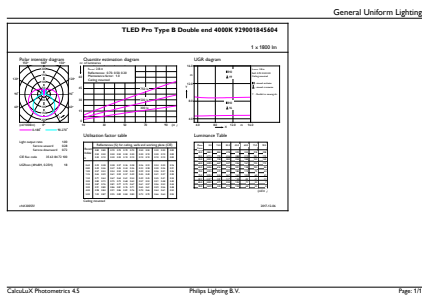
Dimensional drawing



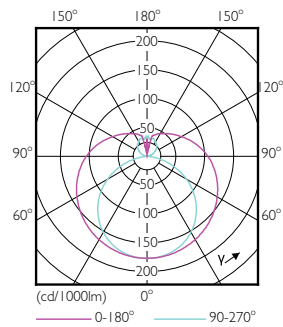
TLED IF CorePro 4ft 1800lm 4000K

Product	D1	D2	A1	A2	A3
14T8/COR/48-840/MF18/G 10/1	25.7 mm	28 mm	1198 mm	1205 mm	1212 mm

Photometric data

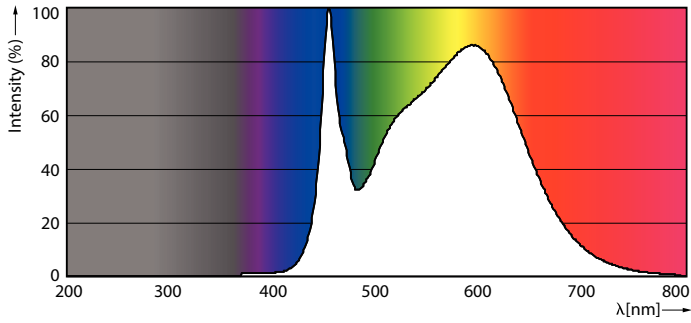


LEDtube 14W G13 840 ND BB18



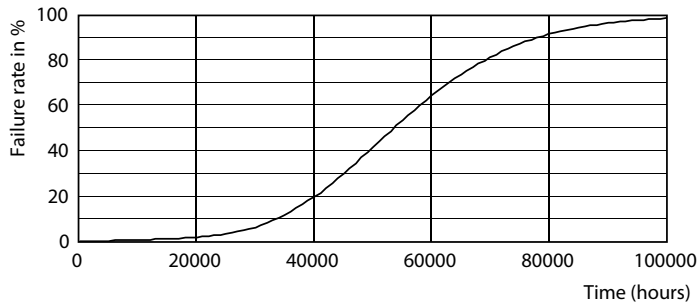
LEDtube 14W G13 830 ND BB17

Photometric data

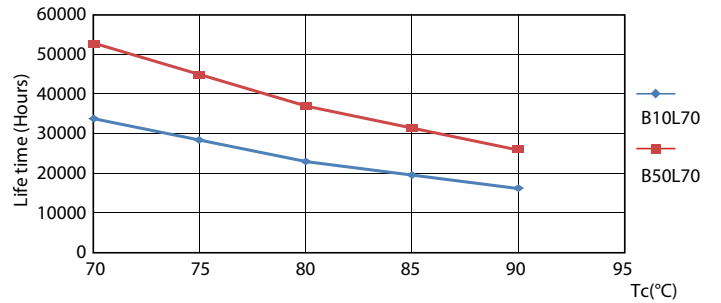


LEDtube 14W G13 840 ND BB18

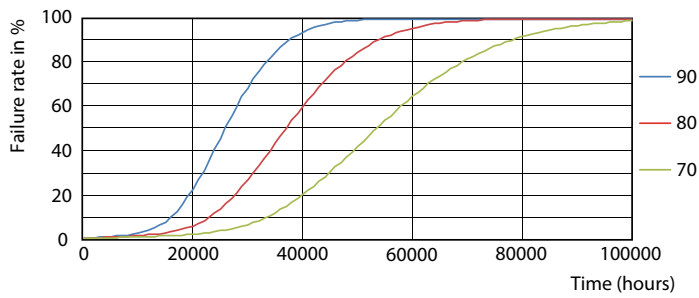
Lifetime



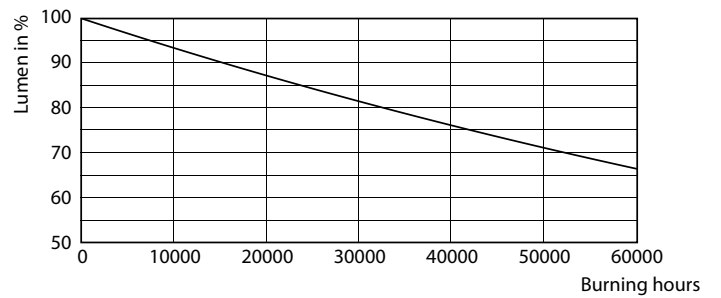
LEDtube 14W G13 830-850 ND BB17-18



LEDtube 14W G13 830-850 ND BB17-18



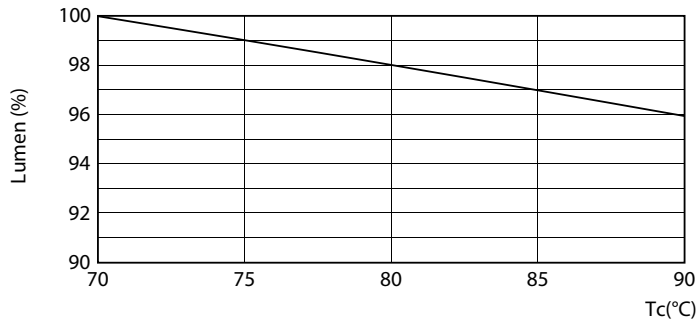
LEDtube 14W G13 830-850 ND BB17-18



LEDtube 14W G13 830-850 ND BB17-18

T8

Lifetime



LEDtube 14W G13 830-850 ND BB17-18

