



MASTER LEDtube InstantFit HF T8

MASTER LEDtube HF 1050mm UO 17W840 T8

Philips MASTER LEDtube InstantFit T8 integrates a LED light source into a traditional fluorescent form factor. Its unique design creates a perfectly uniform visual appearance which cannot be distinguished from traditional fluorescent. Philips MASTER LEDtube InstantFit T8 is the ideal solution for customers who have higher light requirements and want to maximize value over lifetime.; Full energy savings & longer lifetime result in attractive payback times and TCO benefits.

Warnings and Safety

- NOTES: The overall energy efficiency and light distribution of any installation that uses these lamps are determined by the design of the installation.

Product data

General Information	
Cap-Base	G13 [Medium Bi-Pin Fluorescent]
EU RoHS compliant	Yes
Nominal Lifetime (Nom)	50000 h
Switching Cycle	50000X

Light Technical	
Color Code	840 [CCT of 4000K]
Beam Angle (Nom)	160 °
Luminous Flux (Nom)	2600 lm
Color Designation	Cool White (CW)
Correlated Color Temperature (Nom)	4000 K
Luminous Efficacy (rated) (Nom)	152.00 lm/W
Color Consistency	<6
Color Rendering Index (Nom)	82

LLMF At End Of Nominal Lifetime (Nom) 70 %	
--	--

Operating and Electrical	
Input Frequency	20000-50000 Hz
Power (Nom)	17 W
Lamp Current (Max)	700 mA
Lamp Current (Min)	300 mA
Starting Time (Nom)	0.5 s
Warm Up Time to 60% Light (Nom)	0.5 s
Power Factor (Nom)	0.9
Voltage (Nom)	30-80 V

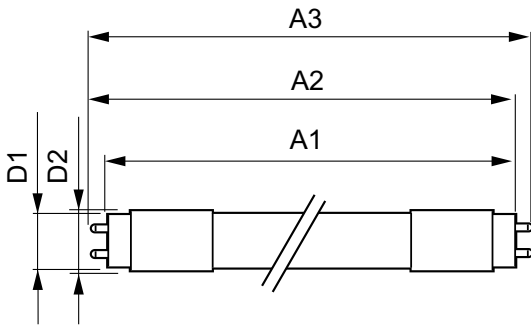
Temperature	
T-Ambient (Max)	45 °C
T-Ambient (Min)	-20 °C

MASTER LEDtube InstantFit HF T8

T-Storage (Max)	65 °C
T-Storage (Min)	-40 °C
T-Case Maximum (Nom)	55 °C
Controls and Dimming	
Dimmable	No
Mechanical and Housing	
Product Length	1100 mm
Bulb Shape	Tube, double-ended
Approval and Application	
Energy Saving Product	Yes
Approval Marks	CE marking RoHS compliance KEMA Keur certificate

Energy Consumption kWh/1000 h	21 kWh
Product Data	
Full product code	871869681028600
Order product name	MASTER LEDtube HF 1050mm UO 17W840 T8
EAN/UPC - Product	8718696810286
Order code	929001834302
Numerator - Quantity Per Pack	1
Numerator - Packs per outer box	10
Material Nr. (12NC)	929001834302
Net Weight (Piece)	0.228 kg

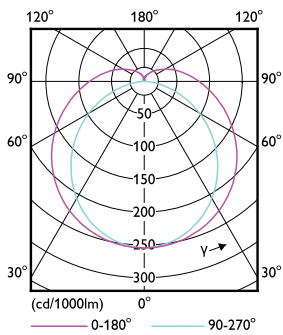
Dimensional drawing



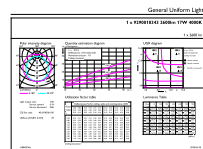
TLED Master HF HO 3.5ft 2600lm EU

Product	D1	D2	A1	A2	A3
MASTER LEDtube HF 1050mm UO 17W840 T8	27.9 mm	28 mm	1047 mm	1052.9 mm	1061.2 mm

Photometric data



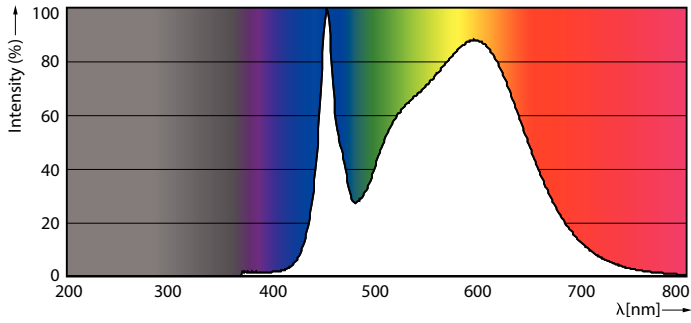
LEDtube MAS HF 17W G13 840 16D ND



LEDtube MAS HF 17W G13 840 16D ND

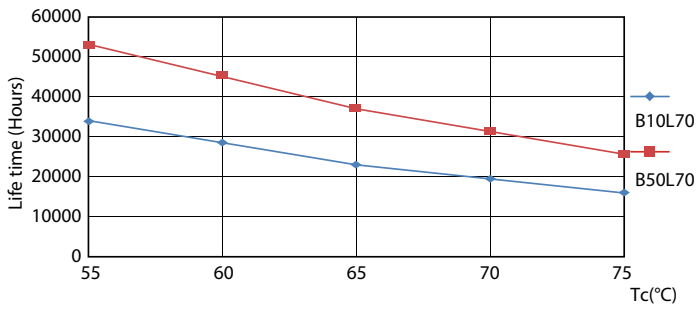
MASTER LEDtube InstantFit HF T8

Photometric data

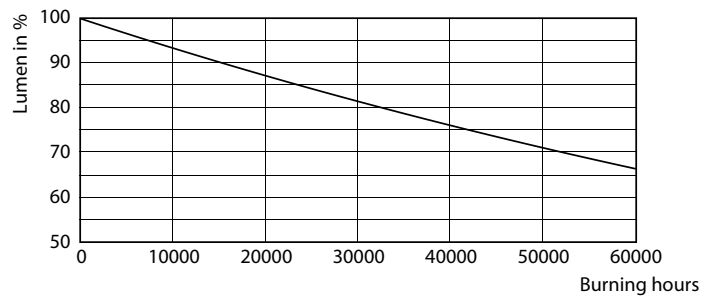


LEDtube MAS HF 17W G13 840 16D ND

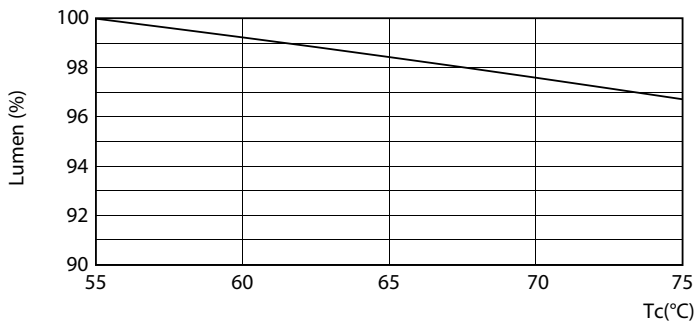
Lifetime



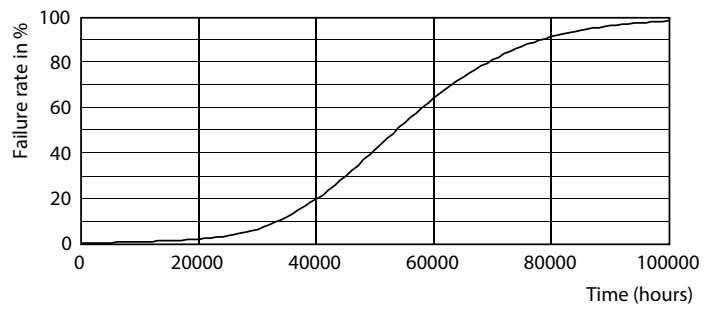
LEDtube MAS HF 17W G13 840 16D ND



LEDtube MAS HF 17W G13 840 16D ND



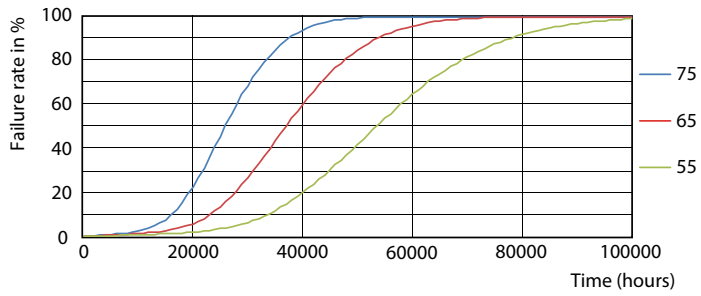
LEDtube MAS HF 17W G13 840 16D ND



LEDtube MAS HF 17W G13 840 16D ND

MASTER LEDtube InstantFit HF T8

Lifetime



LEDtube MAS HF 17W G13 840 16D ND

