



T5

14T5HE/46-830/IF20/G/DIM 10/1

Philips T5 LED tubes offer an affordable, energy saving retrofit solution. The T5 lamps have been engineered to withstand the test of time with a 50,000-hour lifetime and a limited 5-year warranty to back it up. The lighting performance effectively replaces conventional fluorescent T5 HO or T5 HE lamps. Available in either InstantFit (Type A or Type C) or MainsFit (Type B / Ballast bypass), Philips T5 TLEDs provide a variety of options for any application.

Product data

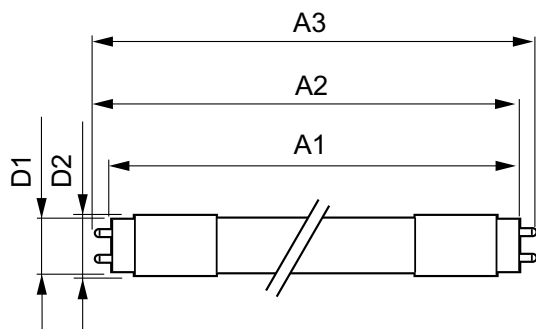
General information		Lamp Current (Max)		350 mA
Cap-Base	G5 [G5]	Lamp Current (Min)	150 mA	
EU RoHS compliant	Yes	Wattage Equivalent	28 W	
Nominal Lifetime (Nom)	50000 h	Starting Time (Nom)	0.5 s	
Switching Cycle	50000	Warm Up Time to 60% Light (Nom)	0.5 s	
Tier	CorePro	UL Type	Type A - works on ballast	
Light technical		Power Factor (Nom)	0.9	
Color Code	830 [CCT of 3000K]	Voltage (Nom)	70-105 V	
Beam Angle (Nom)	200 °	Temperature		
Luminous Flux (Nom)	2000 lm	T-Ambient (Max)	45 °C	
Color Designation	White (WH)	T-Ambient (Min)	-20 °C	
Correlated Color Temperature (Nom)	3000 K	T-Storage (Max)	65 °C	
Luminous Efficacy (rated) (Nom)	142.00 lm/W	T-Storage (Min)	-40 °C	
Color Consistency	<6	T-Case Maximum (Nom)	70 °C	
Color Rendering Index (Nom)	82	Controls and dimming		
LLMF At End Of Nominal Lifetime (Nom)	70 %	Dimmable	Yes	
Operating and electrical		Mechanical and housing		
Input Frequency	40000-110000 Hz	Bulb Finish	Frosted	
Power (Nom)	14 W			

T5

Bulb Material	Glass
Product Length	1200 mm
Bulb Shape	Tube, double-ended
Approval and application	
Energy Saving Product	Yes
Approval Marks	UL certificate RoHS compliance
Energy Consumption kWh/1000 h	- kWh
Energy Certifications	DLC Standard

Product data	
Order product name	14T5HE/46-830/IF20/G/DIM 10/1
EAN/UPC - Product	046677476496
Order code	929001823904
Numerator - Quantity Per Pack	1
Numerator - Packs per outer box	10
Material Nr. (12NC)	929001823904
Net Weight (Piece)	0.146 kg

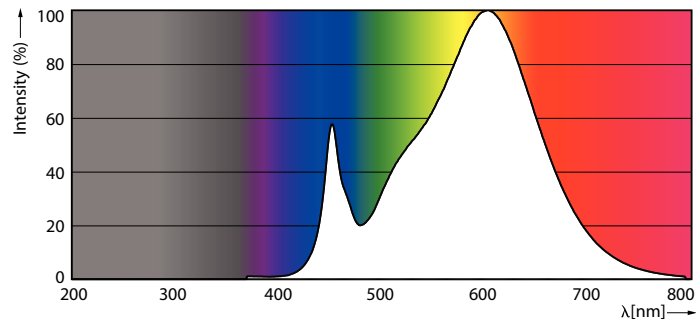
Dimensional drawing



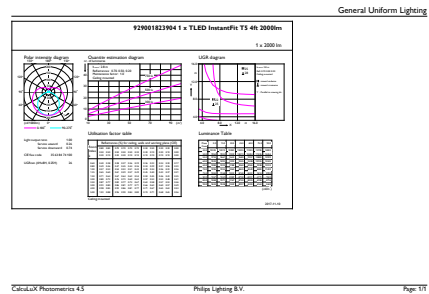
14T5HE/46-830/IF20/G/DIM 10/1

Product	D1	D2	A1	A2	A3
14T5HE/46-830/ IF20/G/DIM 10/1	15.3 mm	18.4 mm	1147.8 mm	1154.9 mm	1162 mm

Photometric data

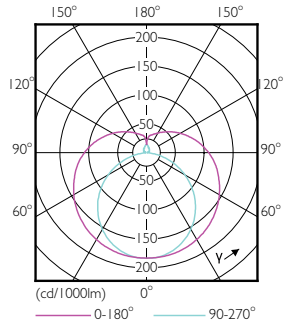


LEDtube PLC 400mm 16-5W 2G11 830 2000lm



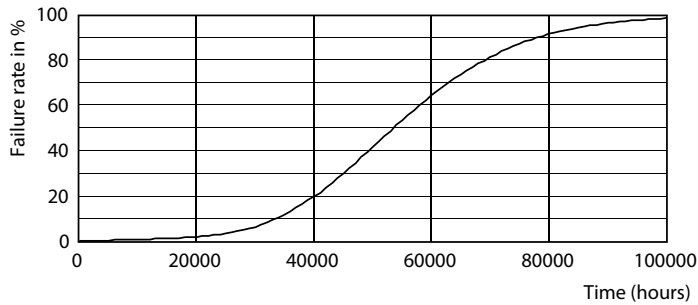
LEDtube 14W G5 830 200D DIM IF20

Photometric data

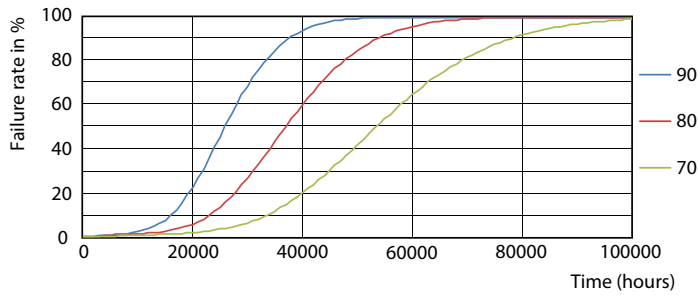


LEDtube 8W G5 830 200D DIM IF10

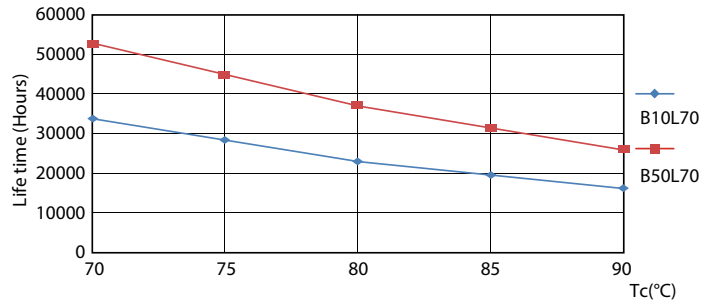
Lifetime



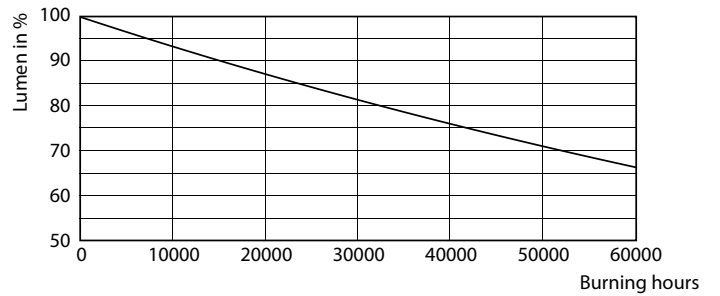
LEDtube 8-14W G5 830-850 200D DIM IF10-21



LEDtube 8-14W G5 830-850 200D DIM IF10-21



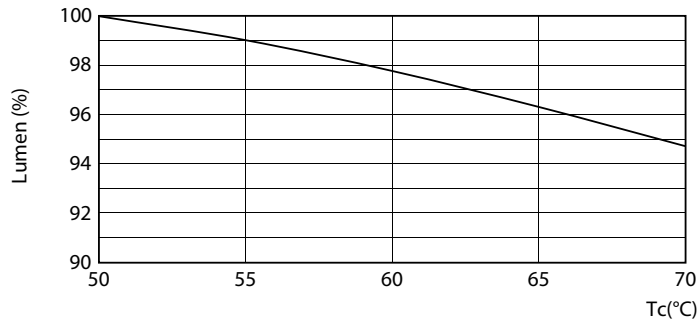
LEDtube 8-14W G5 830-850 200D DIM IF10-21



LEDtube 8-14W G5 830-850 200D DIM IF10-21

T5

Lifetime



LEDtube 8-14W G5 830-850 200D DIM IF10-21

