



T5

11T5HE/34-850/IF15/G/DIM 10/1

Philips T5 LED tubes offer an affordable, energy saving retrofit solution. The T5 lamps have been engineered to withstand the test of time with a 50,000-hour lifetime and a limited 5-year warranty to back it up. The lighting performance effectively replaces conventional fluorescent T5 HO or T5 HE lamps. Available in either InstantFit (Type A or Type C) or MainsFit (Type B / Ballast bypass), Philips T5 TLEDs provide a variety of options for any application.

Product data

General information		Lamp Current (Max)	
Cap-Base	G5 [G5]	400 mA	
EU RoHS compliant	Yes	Lamp Current (Min)	
Nominal Lifetime (Nom)	50000 h	60 mA	
Switching Cycle	50000	Wattage Equivalent	
Tier	CorePro	21 W	
Light technical		Starting Time (Nom)	
Color Code	850 [CCT of 5000K]	0.5 s	
Beam Angle (Nom)	200 °	Warm Up Time to 60% Light (Nom)	
Luminous Flux (Nom)	1500 lm	0.5 s	
Color Designation	Daylight	UL Type	
Correlated Color Temperature (Nom)	5000 K	Type A - works on ballast	
Luminous Efficacy (rated) (Nom)	136.00 lm/W	Power Factor (Nom)	
Color Consistency	<5	0.9	
Color Rendering Index (Nom)	82	Voltage (Nom)	
LLMF At End Of Nominal Lifetime (Nom)	70 %	50-80 V	
Operating and electrical		Temperature	
Input Frequency	40000-110000 Hz	T-Ambient (Max)	
Power (Nom)	11 W	45 °C	
		T-Ambient (Min)	
		-20 °C	
		T-Storage (Max)	
		65 °C	
		T-Storage (Min)	
		-40 °C	
		T-Case Maximum (Nom)	
		70 °C	
		Controls and dimming	
		Dimmable	
		Yes	
		Mechanical and housing	
		Bulb Finish	
		Frosted	

T5

Bulb Material	Glass
Product Length	900 mm
Bulb Shape	Tube, double-ended

Approval and application

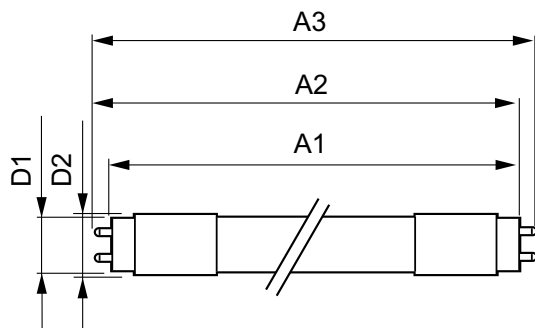
Energy Saving Product	Yes
Approval Marks	UL certificate RoHS compliance
Energy Consumption kWh/1000 h	- kWh

Product data

Order product name	11T5HE/34-850/IF15/G/DIM 10/1
--------------------	-------------------------------

EAN/UPC - Product	046677476489
Order code	929001823804
Numerator - Quantity Per Pack	1
Numerator - Packs per outer box	10
Material Nr. (12NC)	929001823804
Net Weight (Piece)	0.110 kg

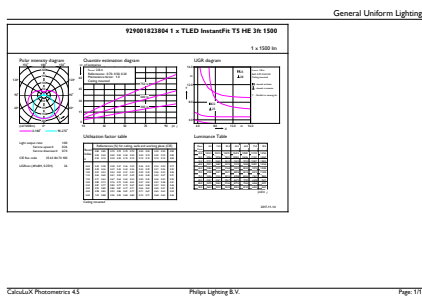
Dimensional drawing



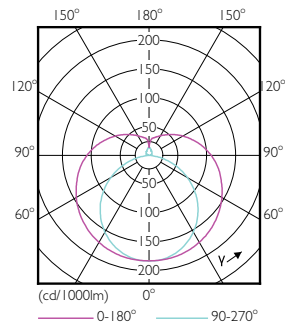
11T5HE/34-850/IF15/G/DIM 10/1

Product	D1	D2	A1	A2	A3
11T5HE/34-850/IF15/G/DIM 10/1	15.3 mm	18.4 mm	847.8 mm	854.9 mm	862 mm

Photometric data

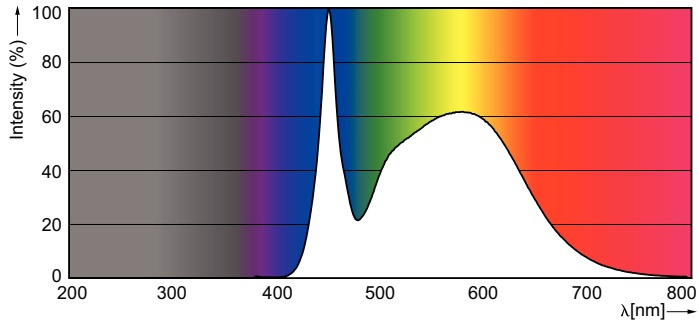


LEDtube 11W G5 850 200D DIM IF15

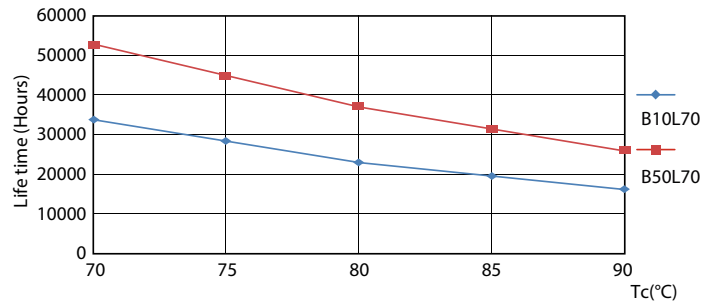
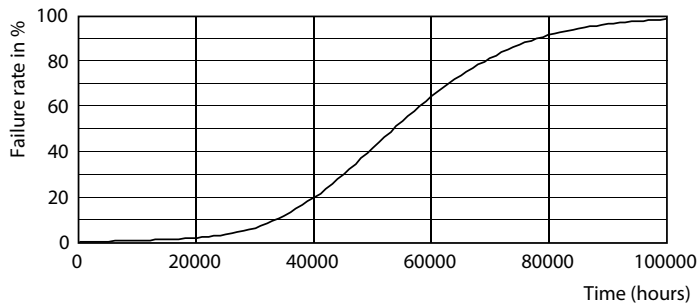


LEDtube 8W G5 830 200D DIM IF10

Photometric data

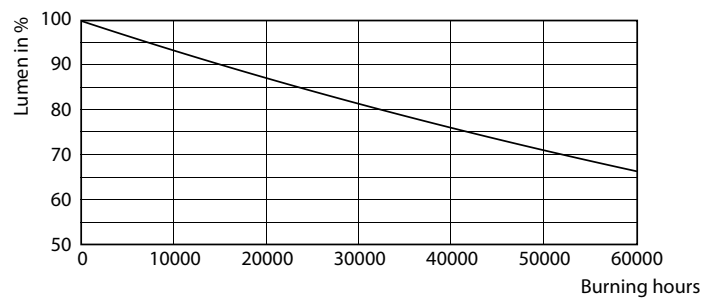
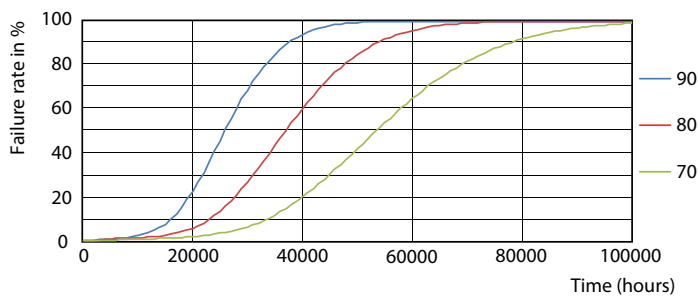


Lifetime



LEDtube 8-14W G5 830-850 200D DIM IF10-21

LEDtube 8-14W G5 830-850 200D DIM IF10-21

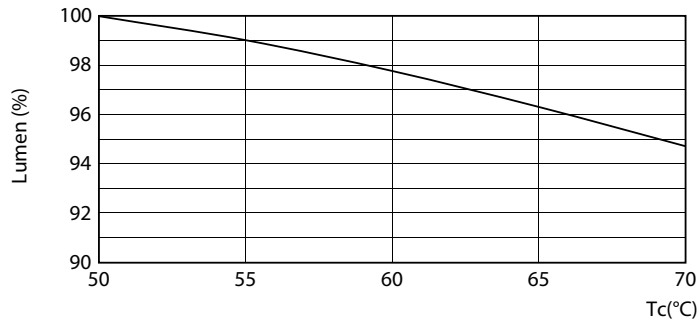


LEDtube 8-14W G5 830-850 200D DIM IF10-21

LEDtube 8-14W G5 830-850 200D DIM IF10-21

T5

Lifetime



LEDtube 8-14W G5 830-850 200D DIM IF10-21

