



PL-C/T

12PL-C/T/COR/32V-830/IF14/P/4P/DIM 10/1

Philips PLED 4-pin & 2-pin lamps are an affordable LED solution to replace compact fluorescent lamps. The product provides a natural lighting effect for use in many lighting applications, and provides instant energy savings, making them an environmentally-friendly solution. Available as replacements for 13W, 26W and 32W compact fluorescent lamps.

Product data

General information	
Cap-Base	GX24q
EU RoHS compliant	Yes
Main Application	Industrial
Nominal Lifetime (Nom)	50000 h
Switching Cycle	50000
Technical Type	12-32W
Tier	CorePro
Light technical	
Color Code	830 [CCT of 3000K]
Beam Angle (Nom)	120 °
Luminous Flux (Nom)	1400 lm
Luminous Flux (Rated) (Nom)	1400 lm
Color Designation	White (WH)
Correlated Color Temperature (Nom)	3000 K
Luminous Efficacy (rated) (Nom)	116.00 lm/W
Color Consistency	<6
Color Rendering Index (Nom)	82
LLMF At End Of Nominal Lifetime (Nom)	70 %

Operating and electrical	
Input Frequency	20000-100000 Hz
Power (Nom)	12 W
Lamp Current (Max)	500 mA
Lamp Current (Min)	150 mA
Wattage Equivalent	32 W
Starting Time (Nom)	0.5 s
Warm Up Time to 60% Light (Nom)	0.5 s
UL Type	Type A - works on ballast
Power Factor (Nom)	0.9
Voltage (Nom)	25-55 V
Temperature	
T-Ambient (Max)	45 °C
T-Ambient (Min)	-20 °C
T-Storage (Max)	65 °C
T-Storage (Min)	-40 °C
T-Case Maximum (Nom)	25 °C
Controls and dimming	
Dimmable	Yes

PL-C/T

Mechanical and housing

Bulb Finish	Frosted
Bulb Material	Plastic
Product Length	3-15/16 in
Bulb Shape	Tube, single-ended

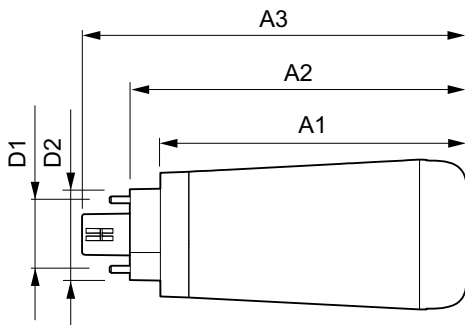
Approval and application

Energy Saving Product	Yes
Approval Marks	RoHS compliance UL certificate KEMA Keur certificate DLC compliance
Energy Consumption kWh/1000 h	- kWh
Energy Certifications	DLC Standard

Product data

Order product name	12PL-C/T/COR/32V-830/IF14/P/4P/DIM 10/1
EAN/UPC - Product	046677476113
Order code	929001820204
Numerator - Quantity Per Pack	1
Numerator - Packs per outer box	10
Material Nr. (12NC)	929001820204
Net Weight (Piece)	0.091 kg

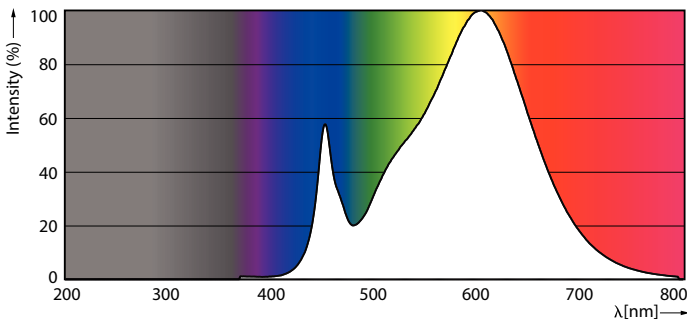
Dimensional drawing



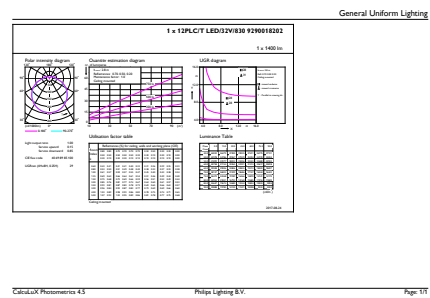
12PL-C/T/COR/32V-830/IF14/P/4P/DIM 10/1

Product	D1	D2	A1	A2	A3
12PL-C/T/COR/32V-830/ IF14/P/4P/DIM 10/1	24.3 mm	29 mm	99.9 mm	109.9 mm	125.5 mm

Photometric data

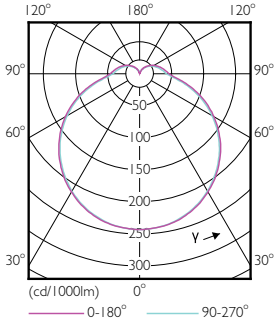


LEDtube PLC 400mm 16-5W 2G11 830 2000lm



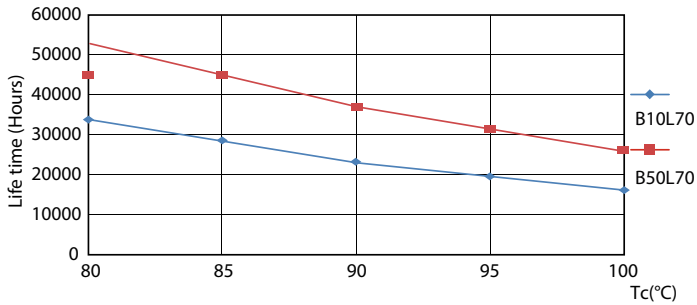
LEDtube PLC/T 12W G24Q 830 32V DIM

Photometric data

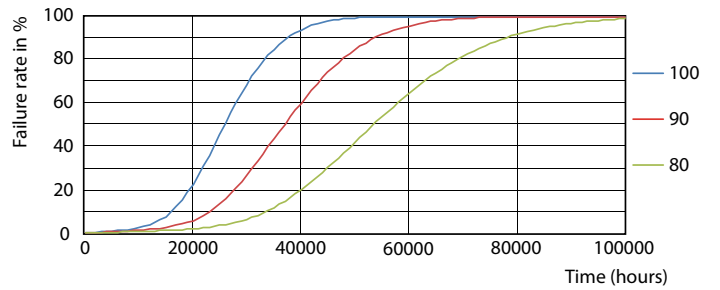


LEDtube PLC/T 12W G24Q 827 32V DIM

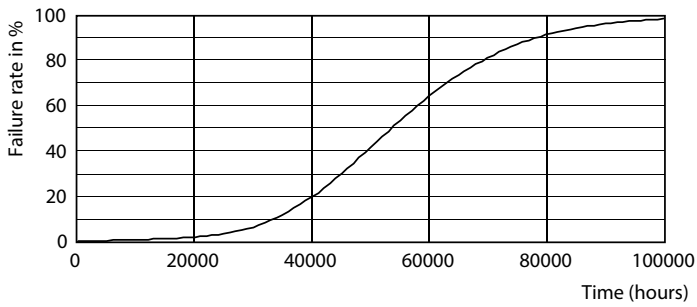
Lifetime



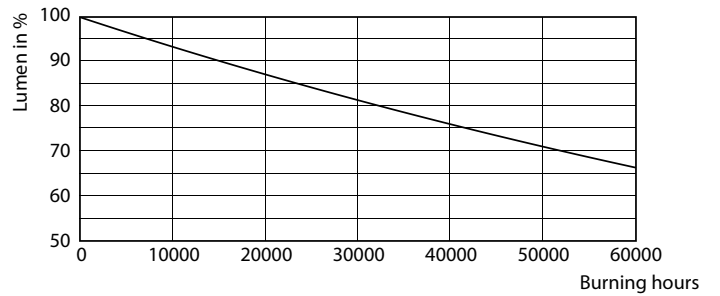
LEDtube PLC/T 12W G24Q 827-840 32H-32V DIM



LEDtube PLC/T 12W G24Q 827-840 32H-32V DIM



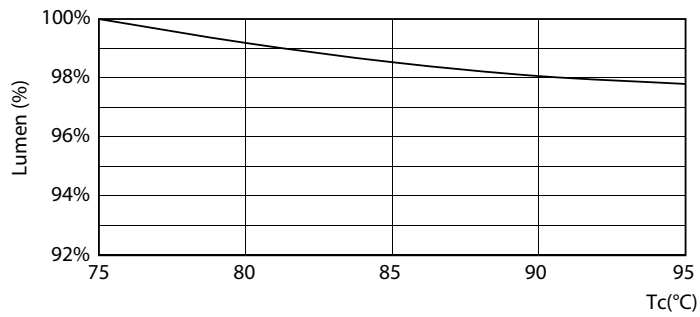
LEDtube PLC/T 12W G24Q 827-840 32H-32V DIM



LEDtube PLC/T 12W G24Q 827-840 32H-32V DIM

PL-C/T

Lifetime



LEDtube PLC/T 12W G24Q 827-840 32V DIM

